

RANGE AND HINTERLAND POPOP COMMUNITY NEWS

Weekly news

A community service since 2016

9 July 2026

Issue 497

What is on this weekend?

- ** 11 July: Montville Markets
- ** 11 July: Neigh-Station, Dulong
- ** 11-12 July: Mother of the Maid, Lind Theatre, Nambour
- ** 12 July: North and Elsewhere, 4pm, Black Box, Nambour



NEW TRUSTEES OF MAPLETON COMMUNITY HALL

Above from left Andrea Walker, Nita C Lester, John Roza, Tony Brett

HONOURING THE PAST, WELCOMING THE FUTURE

Good morning, everyone, representatives of the tenants, RSL and the Tennis Club, neighbours and members of our wonderful community. We are gathered here this morning at these great community assets—a place that has seen generations of laughter, sport, celebration, and connection. But halls and sports grounds do not operate and evolve by themselves. They require vision, sweat, dedication, and an unwavering commitment.

This morning we are here to say a heartfelt thank you to the retiring trustees, Lindsey, Maree and Brett and to all the past trustees. For decades—not just years, but decades—Lindsey, her son Brett, her husband Terry and her father Bob have been a driving force behind this ground and hall. When the sun was blazing, you were here. When the rain was pouring, you were here. Because of your enormous effort, your tireless hours, and your meticulous care, Mapleton has facilities of an incredibly high standard. You didn't just maintain a building and a field; you preserved a place for our community to gather. On behalf of everyone who has ever played a game here, attended an event, or simply enjoyed the space: thank you. Your legacy is etched into the very soil of this ground.

As the retiring trustees, Lindsey, Maree and Brett take a well-deserved step away, a new chapter begins. A new four-member team of trustees has stepped forward, and we do so with a profound sense of responsibility. We look at these great community assets, and our commitment is simple ... yet ambitious: to maintain the present high standard for yet another 100 years.

We bring with us a diverse, wide range of expertise that connects deeply with the fabric of this region:

- We bring a strong connection to the music world, ready to bring vibrant rhythm, culture, and life into our spaces.
- We bring a deep tie to the core of our local community, ensuring every resident feels heard and welcome.
- We have a history as individuals of being approachable.
- We bring a passionate understanding of the broader Sunshine Coast and the beautiful Hinterland we call home.
- And we bring valuable experience working with local non-profit organisations, knowing exactly how to build partnerships that thrive.

With these diverse skills driving us forward, we foresee an engaging, bright and sustainable future for this vital element of Mapleton.

We look forward to working along with permanent tenants, hirers and our neighbours.

The retiring Trustees have given us the foundation. Now, it is our turn to build the future upon it. Please join me in a round of applause to celebrate the decades of extraordinary service by the retiring and all the past Trustees.

The above was the presentation by the new Trustees at a recent gathering of Hall neighbours, permanent tenants and current hirers. Special thanks to Cr David Law for your attendance.

Telephone: 0494 747162

Email: mapletonhall@gmail.com

CONTENTS

New Trustees Mapleton	Zonta
Community Hall	QCCC
North and Elsewhere	Development Applications
Lind Theatre	Flora and Fauna
Maleny Car Boot Sale	Community Services
Restoring Hope Community Hub	Date Claims
Art Exhibition	Venues available for Hire
Watercolour Class	Local Organisations' Posters
Parrots and Marbles	and more

North and Elsewhere

'Safe Harbour' Album Launch

with special guest Sam Hodgkins



'Safe Harbour', the debut album from North and Elsewhere, is an ode to strength, travel, healing and childhood. It is a warm place to rest amidst the noise.

Sunday 12th July 4pm

Black Box Theatre, Nambour

Tickets \$20



Nambour-born musicians Hazel and Roanna Law grew up busking in town and playing in their family folk band. They sang together in their high school musical and played their first gigs in cafes on the Sunshine Coast. Now the sisters are returning to their home town to launch 'Safe Harbour', their debut album as 'North and Elsewhere'.

"We've always loved singing together and I guess we've just never stopped. Even while living on opposite sides of the world for a while," said Hazel. "I wrote many of these songs while living overseas and wishing I could be closer to family."

Last year North and Elsewhere were finalists for Young Folk Act of the Year in the Australian Folk Music Awards. They also made the Grand Final of the Listen Up Music Prize.

They have chosen Nambour as the first launch event for their album, with shows in Newcastle and Canberra to follow. The show will be opened by Nambour songwriter Sam Hodgkins who is a popular performer at Naamba Folk Club.

Venue: Black Box Theatre

Date: Sunday 12th July

Time: Doors 3.30pm for a 4pm show

Tickets: \$20 adults, \$15 youth and \$10 children available on Trybooking or on the door.



MOTHER OF THE MAID by Jane Anderson
Directed by Glenda Campi

"Isabelle d'Arc is a God-fearing woman," she says of herself. "She can neither read nor write and her skirts smell ripe as a cheese. But she can do all sorts of handy things such as gutting a lamb, lancing a boil and hiding the family valuables during a raid."

And her daughter Jeanne, how can a young girl from a small village become the powerful military leader, a symbol of hope, and a beloved saint?

Jeanne d' Arc changed the course of French history with her strong faith and courage.

This riveting play is an epic tale told through an unexpected and remarkable perspective.

"Content Warning: Contains depictions of stage violence, slapping, and the use of a stick.

Friday 10th 7.30pm

Saturday 11th 2.00pm

**Mother of the Maid Tickets, The LIND THEATRE (selected seating),
NAMBOUR | TryBooking Australia**

Maleny's Epic Car Boot Sale again!!

Trash or Treasure
you decide!!!

Sun 19th of July 2026

7.30am - 12pm est.

926 Maleny Montville Rd,
Balmoral Ridge

2nd hand goods galore, hand
crafted items, wood work,
plants, toys, vego food & more.



Ph: 0414 455 001



Maleny Seventh Day Adventist Church initiative

restoring hope Community hub GRAND OPENING



A COMMUNITY EFFORT WORTH CELEBRATING

Sunday 26 July 2026

Doors Open 2:00pm | Official Opening 2:30pm

50 Iluka Ave, Buddina

You're invited to join us as we celebrate the opening of a space made possible by the generosity of volunteers, donors, supporters, grant funding and our wider community.

- Official Ribbon Cutting
- RHPT's Choir of Sound Intent
- 2026 Benevolent Bears Auction Launch
- Afternoon Tea & BBQ
- Lawn Games
- Centre Tours
- Learn About Our Programs
- Discover Ways To Get Involved



BUILT BY COMMUNITY. FOR COMMUNITY.
EVERYONE WELCOME

RSVPs appreciated (but not essential) by 20 July to info@rhpttherapy.org.au



**Where are these beautiful artworks?
Mapleton Library Community Centre
until early August**

Kerin Shekel makes bright, colourful and lively marks on paper that capture random moments in a domestic setting. Her medium of choice, most recently oil pastel, is that which allows her to respond quickly and intuitively in a painterly style.

She avoids the consciously posed and contrived, inspired instead by arrangements that are composed by providential acts - the way the apples fell out of the bag, the tomatoes were poised on the windowsill or the last eggs in the carton.

Aware that the mundane objects in everyday life are the product of an extensive process of design, manufacture and creation, she considers them worthy of consideration.

She is particularly fascinated by the challenge of representing the textures and forms of food and their fleeting existence - a passion that grew out of illustrating recipes in her food journal and a love of cooking.

Through a process of photos, thumbnails sketches, small-scale drawings and drafts she gains familiarity with her subject before committing to a final piece that meets her vision. Her preference is for an economy of strokes, that feel to her like a process of construction, rather than photo-realistic representation. She rejects smooth transitions in favour of visible, raw gestures and embraces serendipitous strokes as evidence of an animated life.



WATERCOLOURS: Consolidation

Date: Tuesday, 21 July

Time: 2:00pm – 4:00pm

Location: Verandah of the
Mapleton Library Community Centre

Join us for a fun and relaxed **NEXT STEPS** class where you'll learn more about the following watercolour techniques: layering, wet on wet; wet on dry and dry on dry

All equipment and supplies are provided, so all you need to do is show up and enjoy. Notes will be provided.

Perfect for anyone wanting to further their watercolour techniques.

Reserve your spot today — spaces are limited

Cost: \$20

Email: mapletonlibrary@gmail.com

MAHJONG

EVERY WEDNESDAY

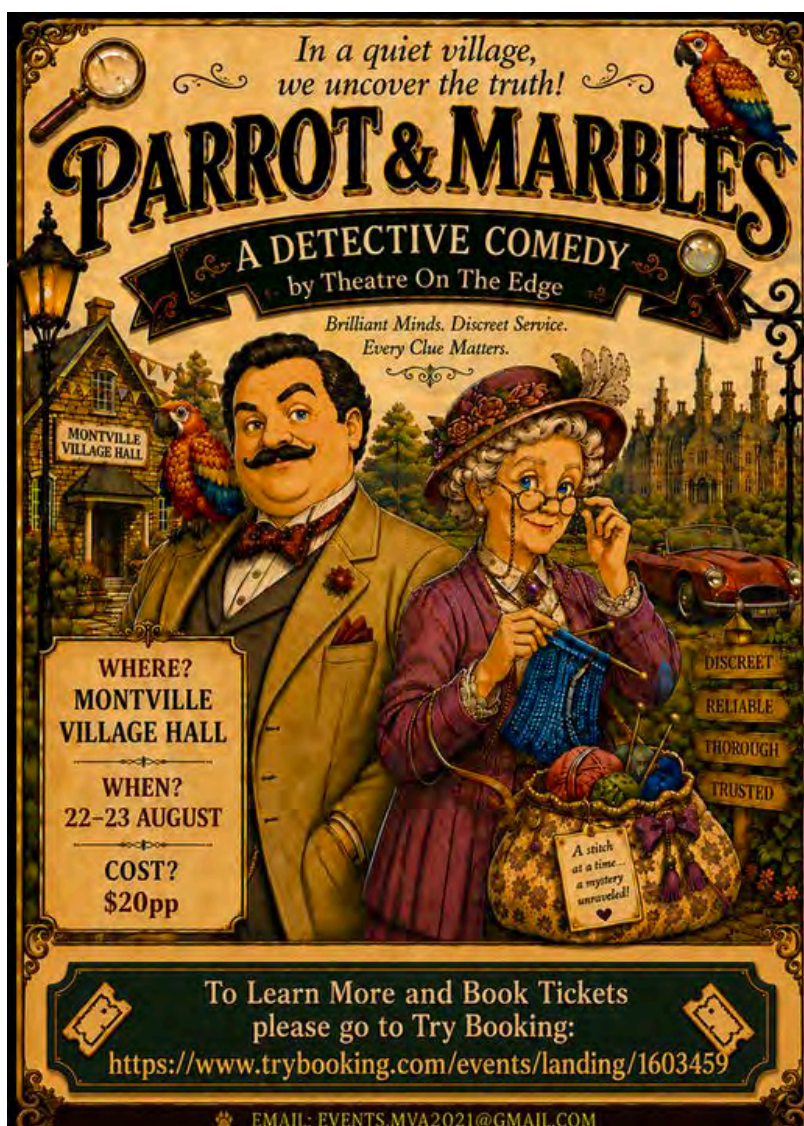
Noon to 3:30pm

Mapleton Bowls Club

Post Office Road

Mapleton

Don't miss out on the fun and camaraderie as we gather to enjoy this timeless and strategic game.



BLACKALL RANGE ZONTA CLUB PRESIDENT'S REPORT FOR THE CHANGE OVER JUNE 2026

What a busy year it has been and I would like to take this opportunity to thank all our members for their hard work raising money to support women and girls escaping domestic violence and facing life's challenges.

We could not have achieved so much this year without the fantastic support we receive from the community and businesses on the Range. We feel very lucky to be part of such a generous community.

These are some of our achievements this year.

- A Trivia night raised over \$6,500 with major sponsorship from Maleny Hinterland Real Estate and Drysdale Funerals.
- Our raffles outside the IGA raised almost \$2,000 with nearly every member taking part on the roster.
- One of our greatest fund raisers was the idea to sell plants in Maleny and this has been very successful – last year we raised \$11,000 and our thanks go to David and Brian – not members of Zonta – but there every month carrying trays of plants and delivering trailers full of pots to the Kiosk.
- Our Business Directory raised \$9,500 and we are glad there is still an appetite for a printed directory on the Range as well as online.
- On the Australia-wide 20th anniversary of Birthing Kits Foundation Australia, on May 2nd, we gathered at the RSL with a record number of volunteers to pack 600 Birthing Kits to be shipped overseas. On the day, we acknowledged the passing of past long-term member Gillian Allen who was a great champion of the project.
- A Post Office grant enabled us to purchase bedding for Sonshine Sanctuary and Lily House, enabling women escaping domestic violence to settle into their temporary accommodation.
- We have improved awareness of Zonta through Facebook and Instagram and the support of our local newspapers – Glasshouse Country & Maleny News and Hinterland Times. We had a marquee at Maleny Australia Day and handed out leaflets and chatted about Zonta.
- Dusk on the Deck, an annual event, held to celebrate International Women's Day, occurred on 6th March this year and at this event Alison Frew was awarded our annual Woman of Achievement with many of her family members in attendance, which made it a very special night.

- Our education awards and scholarships were won by four dynamic, local young women.
- Hannah Leach and Alexandra Haslam were awarded the Young Women in Leadership Award, Kelly Schofield and Eliza Portas received the tertiary scholarships.
- While our fundraising efforts are used for all of our projects, some of our membership fees are sent to Zonta International to assist with funding overseas projects such as :
 - Ending child marriage - by protecting the rights of millions of vulnerable girls in 12 countries in Africa and Asia.
 - Working to prevent climate-induced gender-based violence and other harmful practices in Madagascar, Mozambique and South Sudan.

It is inspiring to belong to an organisation that is able to make a positive impact in local communities and for women and girls globally.

I'm looking forward to representing our club in July at the International Convention in Vancouver, a good way to see out my final year as President.

At the Convention, Sandra Venn-Brown from the Stanthorpe Club will be inducted as the incoming Zonta International President.

We have a lot to get our teeth into again this coming year. 2027 will be the 30th Anniversary of our club and with more new members, an enlarged Board and a new Advocacy Committee, I feel we will achieve a lot to improve the lives of women and girls, both locally and internationally.



Recent Development Applications in Divisions 5 and 10

This is an initiative of Pop Up Community News aimed at providing information and heightened awareness as to developments in our region. Hopefully the information will provide a spring board should anyone wish to dive deeper into any specific application. Using the link:

<https://developmenti.sunshinecoast.qld.gov.au/> or entering "development i sunshine coast" into a browser will take you to the Development i home page. Click on "Application Search" and enter the application number. Select "Details" if you want to dive deeper. The supporting documents can typically be downloaded or viewed by selecting "Application Documents" in the right hand section of the screen.

In the listings below, typically a brief editorial comment is provided after each application description. These are shown in italics.

DIVISION 10:

Lodged: 30/06/2026 DA#: POS26/0115

22 Dorans Road NORTH ARM – Reconfiguration of 1 Lot into 6 Lots – Lots 8 – 13 on SP360158 – Project Urban Pty Ltd. Administrative. *Approving Plans.*

Lodged: 30/06/2026 DA#: RAL26/0061 Impact Assessable

64 Burnside Rd PERWILLOWEN – 1 Lot into 3 Lots – Kennedy Castle Pty Ltd – Urbicus Pty Ltd. 8153m² into 3 lots: 939m², 1022m² and 6192m². Impact Assessable. *Subdivision includes section of site to be filled, (including backfill of historical dams), with extent of fill area 2325m². Fill to RL 37.500 with 1% grade to the southeast.*

Lodged: 30/06/2026 DA#: OPW26/0284

6 Nambour Mapleton Rd NAMBOUR – Advertising Device – Robert Dick – Evolve Building Approvals. *Facade update for Footsmart Podiatry.*

Lodged: 29/06/2026 DA#: RAL26/0060

26 Old Gympie Rd YANDINA – Boundary realignment – Greeff Property – CMAC Building. *Boundary realignment so that the boundary does not pass through an existing dwelling. One lot changes from 697m² to 891m². The other, from 656m² to 465m².*

Lodged: 25/06/2026 DA#: POS26/0113

8 Clifton Place Eumundi – Survey Plan SP356662 (2 Lots) – Max Watterson & Associates. Administrative. *Approving Plans.*

Lodged: 01/07/2026 DA#: OPW26/0288

56 Collins Rd YANDINA – Earthworks – Mr Darryl G & Mrs Neda J Scale – 360 Civil Consulting Pty Ltd. *Application to fill in a dam in the southern section of the property.*

Lodged: 01/07/2026 DA#: MCU23/0005.02

563A Delicia Rd, OBI OBI – Minor Change to Development Approval – Nature Based Tourism (8 cabins) – Restful Ridges Pty Ltd – Lee Development Planning Pty Ltd. *Change to amend the design characteristics of one of the eight cabins approved in the development, without dramatic change in scale, bulk, materials or siting of the cabin.*

Lodged: 29/06/2026 DA#: POS26/0118

11 Stoneleigh Rise BURNSIDE – BFP for Duplex SP364623 – Castrikum Adams Legal. Administrative. *Approving Plans.*

Lodged: 25/06/2026 DA#: RAL26/0062 & CAR26/0486

112 Perwillowen Rd & 1 Silverwood Dr BURNSIDE – Reconfiguring a Lot via Minor Boundary Realignment & dwelling house extension – E Galvin & R Darlington – Murray and Associates (Qld) Pty Ltd. Addition of 2 bedrooms, 1 ens, and office to existing dwelling. Boundary realignment to suit extension.

Lodged: 02/07/2026 DA#: MCU26/0164

692 Obi Obi Rd OBI OBI – Secondary Dwelling – Vanessa and Tony Brunton – Danya Cook Town Planning. *2 bed, 1 bath by "The Shed House".*

DIVISION 5:

Lodged: 30/06/2026 DA#: MCU26/0162

21 Kenlea Cct WOOMBYE – New Construction of Dwelling – 1 Storey & Retaining Wall – Ausmar Homes – Suncoast Building Approvals. 6 bed, 3 bath, games, media, activity, 3 garages, hip roof 22.5°.

Lodged: 29/06/2026 DA#: RAL26/0059

645 Chevallum Rd CHEVALLUM - 1 Lot into 10 Lots and Drainage Reserve - Atalaya Investments Pty Ltd - Murray & Associates (QLD) Pty Ltd. Lot sizes range from 4000m2 to 6660m2. Mostly just over 4000m2. Zoned Industrial, near M1 with access from Chevallum Rd.

Lodged: 29/06/2026 DA#: MCU14/0157.01

Bells Creek Arterial Road & Bruce Highway Bells Creek & Roys Road Beerwah - Minor Change to Existing Approval - Extraction of Material - Extractive Industry & ERA #16 (Extractive and Screening Activities) - RPS - Stockland Development Pty Ltd. Relates to works to develop Precincts 12 and 13 of Aura.

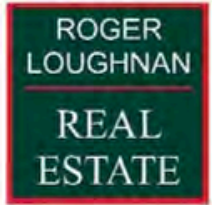
Lodged: 02/07/2026 DA#: REC14/0152.01 - CAR26/0516

40 De Zen Road PALMVIEW - Minor Change to Development Approval - Reconfiguration of 1 Lot into 2 Lots - Michael Morgan - Danya Cook Town Planning. No documents published.

Lodged: 03/07/2026 DA#: MCU14/0157.02

Bells Creek Arterial Road & Bruce Highway Bells Creek - Minor Change to Existing Approval - Response Notice Affected Entity - Stockland Development Pty Ltd - RPS. Relates to Aura.

Supporting local businesses that support the community



Mapleton



BELLA VISTA ITALIAN RESTAURANT
MAPLETON

Grow Australian Plants

LOCAL

Coffee Bush *Breynia oblongifolia*

Coffee Bush

The Coffee Bush is a hardy open shrub with attractive pink red fruit growing near rainforest margins. The Coffee Bush attracts both birds and butterflies to the garden. Birds enjoy feeding on the fruits and it is also the host plant for caterpillars of the Large Grass-yellow butterfly, *Eurema hecabe*.

The Coffee Bush typically grows to about 3m in height. In some cases, taller plants may develop a single trunk, resembling a small tree. The leaves are oval-shaped and soft.

In spring, unusual small green flowers appear under the leaves, followed by numerous berries resembling coffee beans during summer and autumn. The fruit ripen to a pink red colour, some will darken to black.

The Coffee Bush is quite hardy and tolerates a wide variety of soils and growing conditions. It thrives best in partial shade but will tolerate sunny positions.



What's the Difference Between Pigeons and Doves?

Common misconceptions and the differences between the two Doves and pigeons are well known and have large populations in many parts of the world.

Yet despite how very common they are, there are many misconceptions about them. For instance; a common question asked is how does one tell the difference between a dove and a pigeon?

These animals belong to a family of birds known as Columbidae. This family of bird makes up 310 known species. From there, one could assume that pigeons make up some of these species, and doves make up the rest. This, however, would be a mistake.

While there are many species within the Columbidae family, the truth of the matter is that "dove" and "pigeon" are both interchangeable names that can be applied to any of the Columbidae species. There's no official differences between the two.

This can cause one to wonder why both terms exist, and why people try to find some distinction between the two.

The two terms came into existence because of how common and wide-spread these birds are. Different parts of the world came up with different names for these animals. In Germany, the bird became known as the "dove," while in France it was named the "pigeon." Of the many names this animal has been given, these were the two that stuck.

While there is no scientific separation between the two, some parts of the world have come up with their own false distinctions between which Columbidae are pigeons and which are doves. To some, "pigeons" are the pest-like Columbidae that live within cities while Doves are the wild cousins of these birds that live in the forests.

Others say that pigeons are the larger Columbidae while attributing the smaller species as doves. As mentioned before, ly recognised.



Opposite - wonga pigeon
Below left - emerald dove
Below right- red crowned dove
Lower - diamond dove



JP SERVICE

Monday mornings from 8:30am to 11:30am without an appointment at the Mapleton Library Community Centre.

Or Thursday mornings 9am to 11am.

Telephone 5445 7182 for a booking in Mapleton at another time.

COMMUNITY WELCOME PACK FOR NEW RESIDENTS

Collect your pack from the
Mapleton Library Community Centre

Borrowing hours: 1pm to 4pm week days
Saturdays 9am to 12noon

What does the pack include?

Community organisations brochures

Range and Hinterland PopUp Community News - a free weekly news for everyone with information about the events in your neighbourhood

List of community organisations in Mapleton, Flaxton and Montville

Zonta Business Directory

And much more

Also available at the COMMUNITY STALL at the monthly Mapleton Country Market.

RURAL FIRE BRIGADES

Call 000 for emergencies

Kureelpa

First Officer 0429 068090

Fire warden Kureelpa 0477 048616

Fire Warden Dulong 0407 412539

E: kureelparfb@gmail.com

Address: Braford Rd, Kureelpa

Post: Kureelpa RFB P.O. Box 4931, SCMC, 4560

Monthly Meetings: 7:30pm on the first Thursday

Mapleton

First Officer (all operational matters): 0428 137927

Fire Warden (fire permits, safety checks): 0499 778806

Secretary (new members, administration): 0499 883019

W: <https://www.facebook.com/mapletonruralfirebrigade/>

E: MapletonRFB@gmail.com

Address: 37 Obi Obi Road, Mapleton 4560

Post: PO Box 366, Mapleton 4560

Monthly Training: 5:30pm on the 2nd Tuesday

Monthly Meeting: 5:30pm on the 3rd Tuesday

Montville

Call Mark Roderick, First Officer on 0409 480058 for queries and training information

Call John Watson, Fire Warden on 0477 712175 for permits
The team meets every second Monday at 7.00pm and on the final Wednesday of each month at 7.00pm

MONTVILLE UNITING CHURCH

Services are held each Sunday at 8.15am when a combined service is held at Maleny Uniting Church at 9.45pm. All welcome.

Minister: Rev Nathan Barton
E: minister@ourcommonlife.org.au
M: 0429 632527

The church is open as a Reflection Gallery every day from at least 10am till 3pm.

ST. MARY'S ANGLICAN CHURCH

On the green, Montville
Sunday Eucharist at 8am
Wednesday Meditation with Maureen 9am
Baptisms, funerals and wedding enquiries welcome
Parish Office: 5499 9130
E: stmarysmontville@gmail.com

Date Claims

11 July Montville Markets

11 July Neigh-Station, Dulong.

12 July 'North and Elsewhere', 4pm, Black Box, Nambour.

17-26 July Open Studios.

17 July Friday Night Dinner, Mapleton Bowls Club.

19-20 July Maleny Car Boot Sale.

25 July July Bush Dance, Montville.

25 July Mapleton Country Market.

25 July Nambour Museum, 10am - 3pm.

26 July Restoring Hope Community Hub, Grand Opening.

31 July Friday Night Dinner, Mapleton Bowls Club.

6 August BRLUPA, Mapleton Library Community Centre.

7 August Fun and Games, Mapleton Library Community Centre.

15 August Plants and Bake Stall, Mapleton.

22-23 August Parrot and Marble, Montville Village Hall.

3 October Spring Fair, Maleny Garden Club.

October Lions Community Dinner, Flaxton Gardens.

28 November - 6 December - Sculpture on the Edge.

Disclaimer: The Editor and Team assume no responsibility or liability for the content of this publication.



Get creative with horses these holidays!

Welcome to **Neigh-Station** - a kids holiday activity with a difference

- Enjoy art and craft with an introduction to equine assisted learning, in a beautiful natural setting.
- For kids aged 6 to 12 yrs. Six children per session.
- Indoor and outdoor activities
- Parents and carers welcome
- \$20/hr (min 2hrs)

Holiday Sessions

SATURDAY 4TH JULY 2026 & **SATURDAY 11TH JULY 2026**

9am - 11am
Bookings essential

Located at 31 Kureelipa Falls Rd, Kureelipa Qld
horseandcraftstudio.com.au
admin@horseandcraftstudio.com.au
Phony 0447 710194

Equine Assisted Learning

Kidney Health: Small Steps That Make a Big Difference

The first week of July is Kidney Health Week, a great reminder to look after two of the hardest-working organs in your body. Your kidneys filter waste, balance fluids, help regulate blood pressure, and support overall health—but kidney disease often develops without noticeable symptoms.

The good news? A few simple habits can help keep your kidneys healthy:

Stay well hydrated by drinking water regularly.

Keep your blood pressure and blood sugar under control.

- Eat a healthy diet and stay active.
- Avoid regular use of anti-inflammatory pain medicines (such as ibuprofen or naproxen) unless advised by your doctor, as they can affect kidney function over time.

As your local pharmacy, we're always happy to review your medicines and discuss how these may affect your kidney health.

A couple of over-the-counter products that may support your kidney health include:

Hydralyte® – An oral rehydration solution that helps replace fluids and electrolytes during illness or dehydration.

Home blood pressure monitors – Regular blood pressure checks at home can help detect and manage one of the leading causes of kidney disease.

If you have diabetes, high blood pressure, are over 60, or have a family history of kidney disease, speak with your GP about a simple kidney health check.

At Lindner Family Pharmacy our dedicated and professional team is committed to supporting the health and wellbeing of you and your family. We are proud to care for the Range communities and provide trusted, accessible healthcare services.

By Natalie Lindner, your local Pharmacist



PLEASE JOIN US
At
MONTVILLE
VILLAGE HALL

Christmas
IN JULY
THE BUSH DANCE



SATURDAY 25TH JULY
6:00 PM - 10:00 PM
\$35 ADULTS
\$20 CHILDREN

Tickets via
<https://www.trybooking.com/DMPMK>

Blackall Range Land Use Planning Association AGM

6 August, 6pm

The Blackall Range Land Use Planning Association (BRLUPA) are holding the annual general meeting on 6 August at the Mapleton Library Community Centre, 6pm. All newcomers and interested people welcome.

BRLUPA is a longstanding community association that has input to key land use planning initiatives in the hinterland and Sunshine Coast Council region, including:

- Seeking to protect and enhance the physical environment, heritage and productive economic base of the Blackall Range by influencing land use and town planning regimes, policy, decisions and practice
- Ensuring local values and knowledge are considered for the local planning scheme and the SEQ regional plan
- Input, including submissions to Council and local MPs on controversial development proposals



MAPLETON BOWLS CLUB SPECIAL MORNING FOR THE CHILDREN

Recently, four classes from the Mapleton State School had fun on the green.

Seven members of the Club guided the children through several activities. Everyone enjoyed the morning, and both children and adults are looking forward to the next 'fun on the green' session.



Apply now

Community Grants Program

Minor Grants close:
Monday 13 July 2026

[Learn more](#)



 Sunshine Coast
COUNCIL

Grant Drop-in Sessions

Our grant drop-in sessions give you the opportunity to speak one-on-one with a member of our Grants Team while the Minor Grant round is open.

If you have questions about eligibility, your project, or your grant application, simply drop in to one of our sessions!

No appointment is needed - assistance is provided on a first-come, first-served basis.

The Minor Grant round closes at midnight on 13 July 2026.

Date	Time	Location
Tuesday 30 June	10am - 12pm	Library+ Caloundra, Omrah Ave, Caloundra
Thursday 2 July	10am - 12pm	Nambour Library, Cnr Currie and Bury Streets, Nambour
Tuesday 7 July	10am - 12pm	Kawana Library, Nanyima Street, Buddina
Thursday 9 July	10am - 12pm	City Hall, 54 First Avenue, Maroochydore

NAMBOUR MUSEUM

CELEBRATING 30 YEARS!

SATURDAY 25 JULY 2026 - 10AM - 3PM

JOIN OUR FREE
FAMILY-FRIENDLY EVENT!



With entertainment from

- Sunshine Brass Band
- Classic Car display
- 30th anniversary exhibit
- Two floors of history
- Outdoor attractions



Celebrate Nambour Museum's 30th Anniversary of the opening of the museum!

There will be a free family-friendly event with entertainment from the Sunshine Brass Band, classic car displays, 30th anniversary exhibit, two floors of history and outdoor attractions. Saturday 25 July, 10am - 3pm.

<https://nambourmuseum.org.au/>

REPEATS

REPEATS



MONTVILLE REFLECTION GALLERY

Space to rest and reflect 10 am to 3 pm most days of the year!

Montville Uniting Church, 152 Main Street, Montville.

**Resist... Rest... Rhythm...
An Exhibition by Wendy Jarrott-Smith**

On now until 31 August

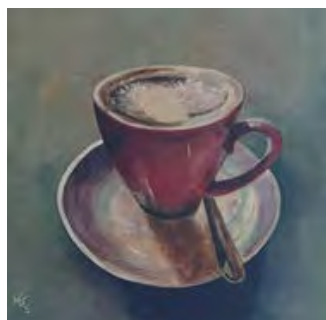
Often in life, we just need to call 'time out' from life's busy-ness and demands. After many years of work, people sometimes take a 'Sabbatical'... an extended time away from paid work, to study, travel or pursue personal growth. It's interesting that this word has its root in Christian Scripture, where we are called to take a Sabbath... a 'day of rest'.

In my own life, I have come to understand that taking 'time out' often means 'RESISTING the should-dos, have-tos, must-dos and demands of others... of intentionally setting aside time for REST... so that we can find again the unique RHYTHM of our life, and rediscover what we can bring as 'gifts' to our world. The paintings and photographs in this display all reference these themes.

My art is 'conceptual'... an art of 'words & pictures'. So, as you look at my paintings and photographs on display, please take the time to read the accompanying reflections, for they express the 'soul' of my work, and complement how I see the world through the lens of my camera, or at the tip of my paintbrush.

'Conceptual art' helps us to observe the 'rub' between the temporal and eternal worlds, through our human experiences. The Celtic Christians would describe this space between the temporal, material world and the eternal world, as a 'thin place', and it is in the 'thin places' in our lives, that we often see the hand of God.

I have found this to be true in my life. For that I am very thankful.



Recent Development Applications in Divisions 5 and 10

This is an initiative of Pop Up Community News aimed at providing information and heightened awareness as to developments in our region. Hopefully the information will provide a spring board should anyone wish to dive deeper into any specific application. Using the link: <https://developmenti.sunshinecoast.qld.gov.au/> or entering "development i sunshine coast" into a browser will take you to the Development i home page. Click on "Application Search" and enter the application number. Select "Details" if you want to dive deeper. The supporting documents can typically be downloaded or viewed by selecting "Application Documents" in the right hand section of the screen.

In the listings below, typically a brief editorial comment is provided after each application description. These are shown in italics.

DIVISION 10:

Lodged: 23/06/2026 DA#: MCU05/0007.01

Pioneer Road YANDINA – Minor Change to Existing Approval – ERA – Printing Facility – Nationwide News Pty Ltd – Urbis Ltd. *Minor Change to the existing printing facility to include ancillary structures, supporting to the ongoing operation.*

Lodged: 23/06/2026 DA#: MCU26/0152 & OPW26/0269

10 Harvest Rd YANDINA – Medium Impact Industry (2 tenancies), Stormwater, Landscaping, Car Parking & Access – Jackson Harvets Dev Pty Ltd Tte & Harvest Dev Pty Ltd Tte – Building Suncoast Green. *2 level industrial complex, 2 tenancies, total space around 860m2.*

Lodged: 26/06/2026 DA#: OPW26/0274

53 Crescent Rd EUMUNDI – 53 & 97 Crescent Road EUMUNDI – Roadworks, Stormwater, Earthworks, Vegetation Clearing, Landscaping – PJ Ferguson, SEI Roediger, Ferg & Roeds Pty Ltd – Sunshine Coast Civil Engineers – Peter James Ferguson. *Relates to RAL22/0039, 2 lots into 37 lots.*

Lodged: 29/06/2026 DA#: REC16/0066.01

76 Elouera Drive NINDERRY – Minor Change to Development Approval – Reconfiguration of 1 Lot into 2 Lots – Gillian Copley – CadCon Surveying & Town Planning. *Proposed deck is fully outside building envelope; however, parts of existing dwelling are already outside the building envelope.*

Lodged: 26/06/2026 DA#: POS26/0119

3 Stoneleigh Rise BURNSIDE – BFP for duplex SP364622 – Castrikum Adams Legal. Administrative. *Approving Plans.*

Lodged: 26/06/2026 DA#: POS26/0121

7 Stoneleigh Rise BURNSIDE – BFP for Duplex x 10 – Lots 1 & 2 on SP356671 – Max Waterson. Administration. *Approving Plans.*

Lodged: 26/06/2026 DA#: RAL26/0058 & OPW26/0279

50 Caplick Way EUMUNDI – Reconfiguring a Lot by Subdivision (1 Lot into 2 Lots) Stormwater, Earthworks, Drainage & Access & Services – N. Hoogstad & A. Brindley – Murray & Associates (QLD) Pty Ltd. *Lot split; 1 into 2. 1776m2 into 917m2 with existing house and a new lot of 859m2.*

DIVISION 5:

Lodged: 23/06/2026 DA#: OPW26/0271

187 Landershute Road LANDERS SHOOT – Filling & Excavation – Benjamin & Vanessa Nash – Plannable Town Planning. *Extension of flat area West of existing dwelling. Cut and fill, retained by batter slopes.*

Lodged: 24/06/2026 DA#: OPW24/0409.02

9 & 11 Palm St MALENY – Minor Change to Development Approval – Earthworks, Stormwater and Roadworks – Reside at Maleny Pty Ltd – MPN Consulting. *Retirement Village Extension.*

Lodged: 25/06/2026 DA#: POS26/0111
425-427 & 435-451 Blackall Range Rd WEST WOOMBYE -
Reconfiguration of Lots 13 & 14 on SP359407 & Easement Z in Lot 13 -
Murray & Associates. Administrative. *Approving Plans.*

Lodged: 29/06/2026 DA#: MCU24/0067.01
360 Western Ave MONTVILLE - Minor Change to Existing Approval -
Montville Pty Ltd - Project Urban Pty Ltd. From application cover
letter: *"The proposed change seeks to amend the approval to allow
the approved manager's residence to be used for short-term
accommodation for a temporary period of time, typically not
exceeding three consecutive months, prior to the commencement
of use of the first two approved cabins. Once the first two cabins
commence use, the manager's residence would revert to its
approved function as a manager's residence associated with the
short-term accommodation use. The change also seeks to
regularise, to the extent relevant to this approval, a garage/carport
structure on the site that has been identified through Council
compliance action (Council reference: COM24/0993)."*

Lodged: 29/06/2026 DA#: OPW26/0282
48 Upper Wakefield St WOOMBYE - Earthworks and Vegetation
Removal - Barend Peterus & Lizelle Buitendach. *Earthworks involving
cut & fill to create residential building platform for main house,
shed, driveway, pool hole and granny flat.*

Lodged: 26/06/2026 DA#: MCU26/0157 & DBW26/0116
265 Connection Rd GLENVIEW - Dwelling House & Carport - Marcus
Pignata - Coastal Building Certifications Pty Ltd. *1 bed, 1 bath
secondary dwelling on 6547m2, gable on posts.*

REPEATS



FREE

THE ARTISANS CLUB

Inviting makers to join us on the
1st Sunday of every month
to craft with other local artisans!

3-5pm at La Galette cafe
Post Office Rd, Mapleton

Follow us on
Instagram

BYO project
Crochet | Knitting |
Drawing | Writing |
Stitching | Mending

Email Laura | the.artisans.club@outlook.com

5 JUL | 2 AUG | 6 SEP | 4 OCT | 1 NOV | 6 DEC



Kim Kirkman
& Friends
in Concert

SUNDAY 19 JULY, 2PM
ST GEORGE'S ANGLICAN CHURCH
2 WALKERS DRIVE TICKETS \$25

Tickets will be available at the door.
There will be afternoon tea in the hall after the show.



Australian Wearable Arts Festival

With a new venue AWAFF 2026 is set to transform the Sunshine Coast on Saturday 11 July at Novotel Sunshine Coast Resort.

This year, selected artists have original artworks, jewellery and design pieces available for purchase on the night, offering audiences the chance to take home a small piece of the Festival.

https://australianwearableart.com.au/?mc_cid=1947c5e9e7&mc_eid=8beb50b296

LOCAL VENUES FOR HIRE

KUREELPA DULONG COMMUNITY HALL

Our modern and clean hall is available for hire for meetings, community events and classes.

Contact: Dianne Fitzgerald E: fitzies56@gmail.com

MAPLETON BOWLS CLUB

Cost: for meeting \$50.00. Rent of premises, or large gathering [Trivia] \$100.00

Space: Can accommodate up to 90 persons standing or 80 persons seated.

Other: The use of the Bar and its staff should be requested, while the use of the kitchen and/or its staff is limited and would need discussion.

Contact: The Club Secretary, Martin Lambe

E: mapletonbowlsclub350@gmail.com T: 0428 898734

MAPLETON COMMUNITY HALL and SPORTSGROUND

The historic timber 109 year old hall including grounds. Includes tables, chairs and a basic kitchen. Capacity is 110 persons in the hall.

To enquire email mapletonhall@gmail.com

Two tennis courts managed by The Mapleton Tennis Club are available for Hire.

MAPLETON LIBRARY COMMUNITY CENTRE

Obi Obi Road, Mapleton T: 5445 7011

E: mapletonlibrary@gmail.com

Cost: meeting \$20 per hour; plus use of the kitchen \$30 per hour

Includes: indoor and outdoor spaces, fully carpeted indoor; small kitchen; toilet inside; data projector with screen on the ceiling; 40 chairs, folding tables available. There are also small grass areas, gazebos available, chairs can be used on the grass.

MONTVILLE VILLAGE HALL

Our versatile hall is the perfect venue for everything from weddings to birthday parties to community gatherings. With ample space and beautiful views, you'll be sure to impress your guests.

Contact us today to make a reservation.

<https://www.montvillevillageassociation.org/village-hall-hire>

OBI OBI HALL

Obi Obi Hall is owned by the Obi Obi and Kidaman Creek communities, and operated by members of the Obi Obi and Kidaman Creek District Community Hall Association Inc.

856 Obi Obi Road, Obi Obi 4574; PO Box 276 Mapleton, 4560

Calendar, floor plan and more all on the following web site

<https://obiobihall.blog/obi-obi-hall/obi-obi-hall-hire/>

ST MARY'S HALL MONTVILLE ON THE VILLAGE GREEN

Perfect for workshops, small events, yoga/pilates classes, cosy concerts, art shows, club meetings, baby showers, family events. This space is fully accessible, now air-conditioned (warm in winter and cool in summer), low cost with a free to use kitchenette. Maximum capacity 50 seated, or 12 yoga mats.

For bookings and enquiries:

E: stmaryshallmontville@gmail.com or T: 0475 773810



JPs in the Community

13 QGOV (13 74 68) www.qld.gov.au/jps

This site's volunteers are supported by the Justices of the Peace Branch, the Department of Justice and Mapleton Library Community Centre.

Hours of operation		
Monday	9.00am-11.30am	*Phone 07 5445 7182
Tuesday	By appointment*	
Wednesday	By appointment*	
Thursday	9.00am-11.00am	
Friday	By appointment*	
Saturday	By appointment*	
Sunday	Closed	

If this signing site is closed, visit www.qld.gov.au/finding to locate the nearest signing site currently open.

DELIVERING FOR AUSTRALIA Queensland Government

LIST OF COMMUNITY ORGANISATIONS for Flaxton, Kureelpa, Mapleton and Montville

Blackall Range Lions Club blackallrangelionsclub@outlook.com;
facebook.com/blackallrangelionsclub/ http://www.brhc.org.au

Blackall Range Visual Artists Thursdays, Mapleton Bowls Club

Blackall Range Woodcrafter's Guild secretary.brwg@gmail.com

Blackall Range Zonta Club membership@zontablackallrange.org.au.
www.zontablackallrange.org.au

Bush and Beach Walking Group bushbeachwalkers@gmail.com

Hinterland Quarry Action Group T: 0416 155116 aveivers@iprimus.com.au

History Group montvillehistorygroup@gmail.com

Kureelpa & Dulong Community Hall kureelpahall@gmail.com

Mah-jong Wednesday weekly at Mapleton Bowls Club

Maleny Golf Club T: 5499 9960 gm@malenygolfclub.com.au
www.malenygolfclub.com.au

Maleny Scottish Country Dancing Monday nights, Maleny RSL Hall: 0429
654033: eshjay2010@gmail.com

Mapleton and District Community Association madca@gmail.com

Mapleton Art Thursdays Mapleton Library Community Centre. Contact:
mapletonlibrary@gmail.com

Mapleton Bowls Club T: 5445 7913 www.mapletonbowlsclub.com.au

Mapleton Bridge Club bridgeaustralia.org
mapletoncontractbridgeclub@gmail.com

Mapleton Choir Kureelpa Hall themapletonchoir@outlook.com

Mapleton Country Market countrymarket.mapleton@gmail.com

Mapleton Craft Group Wednesdays 9-12noon, Mapleton Bowls Club

Mapleton Fire Warden T: 0493 044052

Mapleton Library Community Centre mapletonlibrary@gmail.com
www.mapletonlibrary.au T 5445 7011

Mapleton Hall and Sportsground Trustees mapletonhall@gmail.com

Mapleton Men's Shed www.mapletonmenshed.org.au

Mapleton Movers Heart Foundation Walking Group T: 0417 476768

Mapleton State School Parents and Carers Association:
mapletonpandc@gmail.com

Mapleton Quilters Mondays 9-12 noon, Mapleton Bowls Club

Mapleton RSL Sub Branch Matt Dykes 0427263595 mdykes7@gmail.com

Mapleton Rural Fire Brigade First Officer T: 0428 137927, Secretary: 0499
883019

Mapleton Tennis Club mapletontennis@gmail.com
www.tennis.com.au/mapleton-tennis-club

Montville Anglican Church huesong2@gmail.com

Montville Chamber of Commerce info@montvillecommerce.com.au

Montville Masonic Lodge montville260@outlook.com

Montville Rural Fire Brigade montville.rfb@bigpond.com

Montville School P&C msspandcpresident@gmail.com

Montville St Mary's Hall stmaryshallmontville@gmail.com

Montville Tennis Club montvilletennisclub1925@gmail.com

Montville Uniting Church minister@ourcommonlife.org.au

Montville Village Association secretary.mva@gmail.com
www.montvillevillageassociation.org.au

Probus Club of North Blackall Range Secretary 0493 632703
nbrprobus@gmail.com

Range Community Gym and Fitness Centre mapletongym@gmail.com
www.rangecommunitygym.com.au

Range United Soccer Club info.rangeunited@gmail.com

St Mary's Anglican Church Montville stmarysmontville@gmail.com

Sunshine Coast U3A u3aoffice@u3asunshine.org.au

The Flaxton Craft Group lkathypatterson@gmail.com

The Range Community Kindergarten www.rangekindy.qld.edu.au
rangekindergarten@bigpond.com

Wildlife Volunteers Association Inc (WILVOS) Hotline 5441 6200
www.wilvos.org.au

Schools

Blackall Range Independent School officel@brschool.com.au T: 5476 4301

Mapleton State School principal@mapletonss.eq.edu.au T: 5456 3333

Montville State School admin@montvilless.eq.edu.au T: 5452 1333

Facebooks

Mapleton Community Facebook page

www.facebook.com/groups/mapletonqueensland/

Montville Community Facebook page

www.facebook.com/groups/780987252874906/

Flaxton Community Facebook page

www.facebook.com/groups/388815358233538

Mapleton Library Community Centre Facebook page

www.facebook.com/p/Mapleton-Community-Library-100064769136195/

Happenings – Montville and surrounds email newsletter

Subscribe: www.montvillevillageassociation.org.au/subscribe-to-happenings/ Editor.mvahappenings@gmail.com

If your organisation is not listed, please let us know.

Many thanks, nita

mapletonqueensland@gmail.com



Community brochure and poster display on the verandah of the Mapleton Library Community Centre is a convenient place to promote your organisation.

If you are looking for information, check out this collection.

Currently overflowing with posters and brochures—there is something for everyone.



Helping Children Walk with Pride

Together we empower children to reach their potential.

RING PULLS



Alone we can do little,
Together we can make a
huge difference to
someone's quality of life.

Drop off at the
Mapleton Bowls Club
Mapleton Library Community Centre



PROCEDURES FOR RANGE AND HINTERLAND POPUP COMMUNITY NEWS MANAGEMENT

The Range and Hinterland PopUp Community News was launched in 2016. The News has gone through many changes with no one organisation controlling the News—it is truly a community news: for the community by the community. Auspiced by the Mapleton Library Community Centre since 2016 which provides insurance, financial support and much more.

The News offers opportunity to promote events and provide information to all community groups across the Range and the Hinterland
Thank you everyone.

The Range and Hinterland PopUp Community News is edited, published and distributed by volunteers.

There will be no discussion or correspondence on matters pertaining to the Range and Hinterland PopUp Community News.

- All articles for the Range and Hinterland PopUp Community News are to be sent to mapletonqueensland@gmail.com
- If it is important to have an article included in a specific edition, forward article as early as possible. Generally the cut off time for publication is noon Tuesday each week but as this is a fully volunteer publication inclusion is not guaranteed.
- Articles can be emailed at any time. Please include contact name and contact details.
- All articles are to be sent digitally unless otherwise pre-arranged.
- Pop up Community News is published weekly but open to review at any time. A short holiday over Festive Season each year to give the volunteers a well earned holiday.
- Currently Thursday night for distribution is the target time.
- No lost animals, political, religious, personal opinions or missing person notification will be published.
- Negative or derogatory comments will not be published.

Email mapletonqueensland@gmail.com requesting guidelines.

Anyone wishing to receive the Range and Hinterland PopUp Community News, send your email address to mapletonqueensland@gmail.com

Anyone wishing to cease receiving the Range and Hinterland PopUp Community News, send your email to mapletonqueensland@gmail.com

Disclaimer: The Editor and Team assumes no responsibility or liability for the content of this publication.

Keep informed through the web and social media
www.facebook.com/groups/mapletonqueensland/

www.mapletonlibrary.au

Remember, if you wish to receive the

RANGE AND HINTERLAND POPUP COMMUNITY NEWS

Email mapletonqueensland@gmail.com

Current circulation over 4,500

