

RANGE AND HINTERLAND POPOP COMMUNITY NEWS

Weekly news

A community service since 2016

18 June 2026

Issue 494

What is on this weekend?

- ** 20-21 June: Winter Craft Fair, Montville
- ** 20-21 June: *Patience*, Maleny Singers

SUPPORT US THIS TAX TIME

HELP US BUILD THE NEXT CHAPTER



Mapleton Library Community Centre

**Donate to our extension fund by
30 June to claim a tax deduction for
this financial year**

Every dollar makes a difference!

Your kind gift will be helping us raise \$150,000 for a vital multi-purpose extension to support digital workshops, community programmes, and quiet study spaces for all.

For major gift opportunities, contact Nita Lester on 5445 7182.

Thank you!



Ways to donate

- Drop in 1-4pm weekdays, 9am-12 noon Sat
- Pay online at <https://mapletonlibrary.au/product/donation> (reference 'extension')
- By direct bank transfer to Mapleton Community Library Inc. BSB 484799. Account # 165959608 (reference 'extension')



10 Obi Obi Rd, Mapleton

☎ 5445 7011

✉ mapletonlibrary@gmail.com



CONTENTS

Build the Next Chapter
Winter Craft Fair
Blackall Range Lions
Pottery Art Exhibition
Friday Night Dinner
Kondalilla Falls Hike
Understanding Spinal Flow
QCCC

Christmas in July
Maleny Film Society
Development Applications
Flora and Fauna
Community Services
Date Claims
Local Organisations' Contacts
and more



DEMONSTRATIONS

SATURDAY
20/6



Heather
Card Making



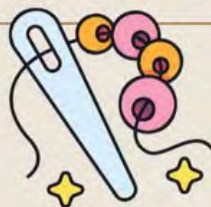
Bernice
Knitting

Tracey
Crochet



SUNDAY
21/6

Gail
Beading



Sue
Watercolour Painting





Our Year in Review

It's June, the end of the 2025-26 Lions 'year, which coincides with the Financial Year.

Later this month we will welcome in a new management team, led by a new President, Neil McKee, and honour the work done by outgoing President, Meryl Gamgee.

Some of the things you may have noticed Lions doing in the '25-'26 year:

- Restoration of the bus shelter on Flaxton Drive.
- Replacing floorboards in the Community Kindergarten
- Removing mould and cleaning down the Montville SS belltower
- Knitting Read Bears for local Year one students to encourage reading
- Funding fruit given out to students with insufficient lunch at Mapleton SS
- Providing hampers at Christmas, and school-book packs, uniform items, and other necessities for families 'doing it tough'.
- Providing morning teas after ANZAC Day Services
- Fundraising activities such as BBQs at Bunnings and Mapleton markets, A Taste of the Hinterland and the Lions Annual Community Dinner.
- Providing assistance on Library Community Centre book sale days



What did we do with funds raised?

100% of funds raised from the public goes back to the community. The reason we pay fees each year and raise money internally from our members' raffles etc is to cover administration expenses.

- Donations this year have included: money to: Animal Rescue Cooperative and Wilvos
- The Mapleton Choir
- Restoring Hope Parkinson's Therapy and Shake It Up Australia Foundation
- SCUH through a Wishlist donation to purchase needed equipment in a joint donation with other nearby Lions Clubs
- School Chaplaincy Program
- Community Centre building fund.
- Lions Medical Research Foundation
- Australian Lions Children's Mobility Foundation
- Youth in Search
- Australian Lions Childhood Cancer Research Foundation



These are just some of many. Donations made.

Local

Lions enjoy serving you, our Community, and the wider Australian Community. Thank you for your support in the current Lions Year. We look forward to continue serving in 2026-27.



We're Lions: We Serve



Beautiful image by Ian Beaton



Pottery exhibition opening

Local residents were treated to a very professional exhibition opening recently of outstanding hand-built pottery.

Karenlee Lacey, a local Mapleton artist, together with the assistance of her husband, displayed her beautiful works inspired by nature for everyone to enjoy.

The Mapleton Library Community Centre celebrated the opening with wine and tasty nibbles for all who attended.

For Karenlee to have her first exhibition in her home town was such a thrill, and to be held in the comfortable, intimate space of the local community centre was very special.

Mapleton needs more of these unique events that make memories for everybody.

The exhibition remains open until 4th July.

Many pieces have sold. Do not miss out.



Above; Part of the crowd
Right: Karenlee





DINNER NIGHT

MAPLETON BOWLS CLUB

FRIDAY 19 June

Orders taken on arrival. Serving begins at 6pm

SPECIALS

Beef and Guinness Pie, Chips and Salad
Lamb Rogan Josh Curry and Jasmine Rice

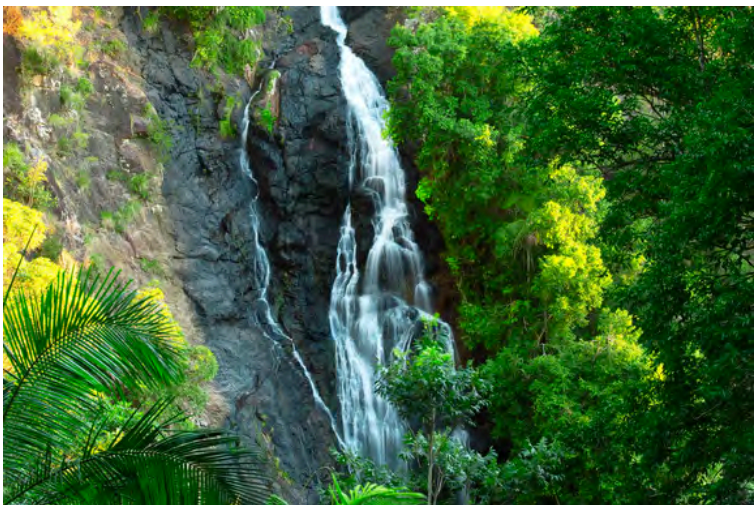
DESSERTS

Mixed Berry Crumble and Ice Cream
Yuzu Meringue Pie with Fresh cream
Lime and Orange Meringue with Fresh Cream

Everyone is welcome

Enjoy a relaxing night away from the kitchen
Becoming so popular - book now to avoid disappointment

<https://mapleton.bowls.com.au/reservations/> This link will take you directly to the booking page of the Mapleton Bowls Club. When a booking is made on the form an email is automatically sent to Kathy Lambe's Dinner Night Email Account and thus will allow for more accurate catering.



Nature hike - Kondalilla Falls

Saturday 27 June
9:00AM-10:00AM

Co-Exist is a movement built by young people, for young people. Sign up for a nature hike

Join Co-exist for their next event - a nature walk through Kondalilla.

RSVP on the Co-Exist app. Spend the morning hanging out with like-minded people and contribute to conservation efforts by identifying and recording flora and fauna species on iNaturalist!

Co-Exist is for young adults (18-30) to explore, connect and protect the planet.

Visit the Co-Exist Instagram page to learn more

UNDERSTANDING SPINAL FLOW: SUPPORTING THE BODY TO HEAL FROM WITHIN

Many people today are experiencing ongoing stress, tension, fatigue, poor sleep, and physical discomfort without a clear cause. While these symptoms can show up in the body, they are often linked to how the nervous system is functioning and how the body is coping with accumulated stress over time.

Spinal Flow is a gentle, non-invasive modality that focuses on the relationship between the spine, the nervous system, and the body's natural ability to heal. Rather than working directly on muscles or joints, Spinal Flow aims to identify and release areas of stored stress within the spine that may be affecting communication between the brain and the body.

When the nervous system is under pressure, the body can shift into patterns of tension, protection, or fatigue. By supporting specific points along the spine, Spinal Flow seeks to help the body move out of these protective states and into a more regulated, relaxed state where healing and repair can occur more effectively.

My own introduction to this work came at a time when I was working in highly demanding corporate roles and had reached a breaking point, both mentally and physically. Like many people, I had become accustomed to pushing through stress, exhaustion and discomfort, believing that was simply part of modern life. Eventually, my body made it clear that something needed to change.

Rather than continuing to ignore the signs or relying solely on medication to manage symptoms, I became determined to understand the root cause of what my body was trying to tell me. This journey led me to explore the connection between the nervous system, emotional wellbeing and physical health, and ultimately to Spinal Flow.

What resonated with me was the understanding that the body is always communicating with us. Symptoms are often not the problem themselves but signals that something deeper requires attention. I was drawn to Spinal Flow because of its gentle approach and its focus on supporting the body's innate intelligence rather than forcing change.

Today, I see many people who are experiencing the same challenges I once faced—stress, overwhelm, tension, fatigue and a sense of disconnection from their own wellbeing. Spinal Flow offers a space to slow down, listen to the body and support the nervous system to function more effectively.

People often seek Spinal Flow care for a wide range of concerns including back and neck tension, headaches, stress, low energy and general wellbeing support. However, many also find it valuable simply as a way to restore balance and resilience in an increasingly busy world.

Spinal Flow is not a replacement for medical care, but it can be a complementary approach that supports the body's natural capacity to adapt, heal and thrive.

If you would like to learn more about Spinal Flow, I am based in Mapleton and am always happy to have a conversation about nervous system health and wellbeing.

Kerryn McHardy
Aligned By Nature Healing
Mapleton, Sunshine Coast Hinterland
M: +61 400 222 577 - E: alignedbynaturehealing@gmail.com



I love this wet weather

QCCC Weekly Activity Update

Over the weekend, QCCC Mapleton is hosting a retreat for young professionals from a Brisbane-based church organisation. There is something timeless about this kind of weekend – a group of busy twenty and thirty-somethings stepping out of city life, phones down, away from deadlines and inboxes, and simply being present with one another for a couple of days. It is a season of life where people are often building careers, navigating relationships and figuring out who they want to become, and a quiet weekend on the Range, surrounded by rainforest rather than traffic, has a way of making space for exactly that kind of reflection. It is part of why campsites like Mapleton remain so sought-after for this age group – not because the activities are flashy, but because the stillness is rare.

It is hard to believe, but next week marks the final week of Term 2 – we are halfway through the school year already. Monday to Wednesday, we welcome a Grade 5 group from Brisbane, alongside a Grade 12 retreat from the Caboolture region. End-of-term senior retreats like this tend to carry a particular weight, often marking a moment of reflection before the final stretch of school life begins.

To see out a busy term, a Leadership Camp from Brisbane and a Grade 6 group from the Wide Bay round out the week.

Meanwhile, our Outdoor Education team will be out across two fronts – facilitating a Duke of Edinburgh expedition along the Sunshine Coast Hinterland Great Walk and running a sea kayaking expedition on Moreton Bay for a group of Grade 11s from a Brisbane State High School. A fitting way to close out the term.



Christmas in July Bush Dance
Saturday 25 July 2026, 7:00 pm – 10:00pm
Memorial Close, Main St, Montville

Montville Village Hall will be filled with Christmas cheer and the sound of dancing and music when the All In Band plays on 25 July. This will be a night to remember – one for the calendar that you will not want to miss. Music, food, song and dance. All playing out beneath mistletoe and fairy lights. Santa and Mrs Claus will make an appearance and there might be the odd elf or three. Perhaps we will see Grinch?

<https://events.sunshinecoast.qld.gov.au/event/35268996-a/christmas-in-july-bush-dance>



The North

11 JUL: 3 pm & 7 pm

131 min – Netherlands/Spain/UK – Drama

VENUE: MALENY COMMUNITY CENTRE

23 MAPLE STREET MALENY

Bart Schrijver directs movies which show how nature can test our limits and salve our troubled hearts. In *The North*, he follows estranged friends Chris and Lluís on a trek through the raw splendour of the Scottish Highlands. Walking the West Highland Way and the Cape Wrath Trail tests their trust, endurance, and capacity for reconnection. Shot entirely on location, the film captures the contrast between these two vulnerable men and the tremendous force of nature—mist, rain and silence; ridges, vales and lochs.

MATINEE SCREENING

Doors Open at 2:30 pm for licensed bar, tea/coffee, slices

Movie Starts at 3:00 pm

EVENING SCREENING

Doors Open at 6:00 pm

Movie Starts at 7:00 pm for licensed bar, tea/coffee, slices

BYO nibbles, meals or restaurant takeaway (tables provided)

THIS EVENT GOES ON SALE 28 JUN



Recent Development Applications in Divisions 5 and 10

This is an initiative of Pop Up Community News aimed at providing information and heightened awareness as to developments in our region. Hopefully the information will provide a spring board should anyone wish to dive deeper into any specific application. Using the link: <https://developmenti.sunshinecoast.qld.gov.au/> or entering "development i sunshine coast" into a browser will take you to the Development i home page. Click on "Application Search" and enter the application number. Select "Details" if you want to dive deeper. The supporting documents can typically be downloaded or viewed by selecting "Application Documents" in the right hand section of the screen.

In the listings below, typically a brief editorial comment is provided after each application description. These are shown in italics.

DIVISION 10:

Lodged: 10/06/2026 DA#: OPW26/0252

30 Kerrs Lane COES CREEK – Electrical Reticulation – Millwell Services Pty Ltd. *Relates to RAL25/0069, 1 lot into 4 lots.*

Lodged: 09/06/2026 DA#: MCU25/0256.01

8 & 10 Bury Street, 114-118, 120-122 & 124-126 Currie Street NAMBOUR – Minor Change to Development Approval – Rooming Accommodation (160 Rooms) and Food & Drink Outlet – ARM Property Investment Group Pty Ltd – Danya Cook Town Planning. *Addresses some unresolved issues at approval, including car park access, car park dimensions, windows, balconies. The application includes an additional 2 rooming units, bringing the total to 162 I assume.*

Lodged: 11/06/2026 DA#: MCU26/0140

30 Lees Rd BRIDGES – Secondary Dwelling – Ian Long – Danya Cook Town Planning. *2 level, 2 garage lower, 1 bed 1 bath upper, flat roof, 43M from primary dwelling which contains 6 bedrooms, 3 bath, 6 car spaces, all on 7000m2.*

DIVISION 5:

Lodged: 10/06/2026 DA#: MCU16/0033.04

19 Coral St MALENY – Minor Change to Existing Approval – David Starling – Sunshine Coast Building Approvals. *Request to construct a carport over existing carparks.*

Lodged: 10/06/2026 DA#: OPW26/0251

32 Wilson Ave WOOMBYE – Electrical Reticulation – Millwell Services Pty Ltd. *Relates to RAL26/0004, block split 1 lot into 2.*

Lodged: 11/06/2026 DA#: OPW26/0253 & CAR26/0385 & MCU26/0124

216 Old Palmwoods Rd PALMWOODS – Dwelling House & Earthworks – Rachel Wright – CadCon Surveying & Town Planning. *4 bed, 2 bath dwelling gables and verandah.*

Lodged: 10/06/2026 DA#: POS26/0106

15 -17 Ann St WOOMBYE – 1 into 2 Lots – Lots 17 & 18 on SP350856 with Access & Service Easement – Land Surveying Dynamics. *Administrative. Approving Plans.*

Mapleton Bowls Club

Enjoy relaxed country style hospitality

Social and competitive bowls

Darts meet Wed and Fri afternoons

Great value meals every alternate Friday 6pm

Bar open Wed and Fridays

*best green on the Sunshine Coast
everyone welcome*

www.mapleton.bowls.com.au
ph: 07 5445 7913
mapletonbowlsclub350@gmail.com
5 Post Office Road, Mapleton, Queensland,
4560.



Grow Australian Plants

Acacia fimbriata **Brisbane golden wattle**

Small tree or rounded shrub to 5m high by 6m across. The green foliage is narrow and lanceolate, to 4cm in length and usually with hairs near the base.

Perfumed cream yellow ball flowerheads winter to spring.

Prefers full sun and is hardy in most situations across the Sunshine Coast and throughout the Hinterland.

Good, dense, screen plant. Local species

Starting to flowering across the regions.



LOCAL

New Holland Honeyeater

Phylidonyris novaehollandiae

17 - 18.5 cm long

The New Holland Honeyeater is mostly black and white, with a large yellow wing patch and yellow sides on the tail. It has a small white ear patch, a thin white whisker at the base of the bill and a white eye. This honeyeater is an active bird, and rarely sits still long enough to give an extended view. Sexes are similar in looks, but females are slightly smaller in size. Young birds are browner and have a grey eye.

The New Holland Honeyeater is common in heath, forests, woodland and gardens, mainly where grevilleas and banksias are found. It is inquisitive and approaches humans. It also mixes with other types of honeyeaters.

Distribution

The New Holland Honeyeater's range extends throughout southern Australia, from about Brisbane, Queensland, to just north of Perth, Western Australia.

Feeding and diet

New Holland Honeyeaters are active feeders. They mostly eat the nectar of flowers and busily dart from flower to flower in search of this high-energy food. Other food items include fruit, insects and spiders. Birds may feed alone, but normally gather in quite large groups. Most feeding takes place in the lower areas of bushes and thickets

Communication

The voice comprises a loud 'chik', a fainter 'pseet' and some chattering notes. If danger, such as a bird of prey, approaches, a group of honeyeaters will join together and give a loud alarm call.

Breeding behaviours

The New Holland Honeyeater's cup-shaped nest is made of bark and grasses, bound together with a spider web. It is lined with soft material and is placed in a bush or tree, anywhere from ground level up to 6 m. Both sexes feed the chicks. A pair of adults may raise two or three broods in a year.

Thank you Feather Cap



JP SERVICE

Monday mornings from 8:30am to 11:30am without an appointment at the Mapleton Library Community Centre.

Or Thursday mornings 9am to 11am.

Telephone 5445 7182 for a booking in Mapleton at another time.

COMMUNITY WELCOME PACK FOR NEW RESIDENTS

Collect your pack from the
Mapleton Library Community Centre

Borrowing hours: 1pm to 4pm week days
Saturdays 9am to 12noon

What does the pack include?

Community organisations brochures

Range and Hinterland PopUp Community News - a free weekly news for everyone with information about the events in your neighbourhood

List of community organisations in Mapleton, Flaxton and Montville

Zonta Business Directory

And much more

Also available at the COMMUNITY STALL at the monthly Mapleton Country Market.

RURAL FIRE BRIGADES

Call 000 for emergencies

Kureelipa

First Officer 0429 068090

Fire warden Kureelipa 0477 048616

Fire Warden Dulong 0407 412539

E: kureelparfb@gmail.com

Address: Braford Rd, Kureelipa

Post: Kureelipa RFB P.O. Box 4931, SCMC, 4560

Monthly Meetings: 7:30pm on the first Thursday

Mapleton

First Officer (all operational matters): 0428 137927

Fire Warden (fire permits, safety checks): 0499 778806

Secretary (new members, administration): 0499 883019

W: <https://www.facebook.com/mapletonruralfirebrigade/>

E: MapletonRFB@gmail.com

Address: 37 Obi Obi Road, Mapleton 4560

Post: PO Box 366, Mapleton 4560

Monthly Training: 5:30pm on the 2nd Tuesday

Monthly Meeting: 5:30pm on the 3rd Tuesday

Montville

Call Mark Roderick, First Officer on 0409 480058 for queries and training information

Call John Watson, Fire Warden on 0477 712175 for permits
The team meets every second Monday at 7.00pm and on the final Wednesday of each month at 7.00pm

MONTVILLE UNITING CHURCH

Services are held each Sunday at 8.15am when a combined service is held at Maleny Uniting Church at 9.45pm. All welcome.

Minister: Rev Nathan Barton
E: minister@ourcommonlife.org.au
M: 0429 632527

The church is open as a Reflection Gallery every day from at least 10am till 3pm.

ST. MARY'S ANGLICAN CHURCH

On the green, Montville
Sunday Eucharist at 8am
Wednesday Meditation with Maureen 9am
Baptisms, funerals and wedding enquiries welcome
Parish Office: 5499 9130
E: stmarysmontville@gmail.com

Date Claims

20-21 June Maleny Singers.

20-21 June Winter Craft Fair, Montville.

19 June Friday Night Dinner, Mapleton Bowls Club.

24 June Story Dogs.

27 June -2 July Thursday, Blackall Range Visual Artist, St Mary's Hall . Montville.

3 July Fun and Games, Mapleton Library Community Centre.

25 July Christmas in July, Montville.

15 August Plants and Bake Stall, Mapleton.

3 October Spring Fair, Maleny Garden Club.

October Lions Community Dinner, Flaxton Gardens.

Disclaimer: The Editor and Team assume no responsibility or liability for the content of this publication.





Story Dogs are coming to visit Mapleton Library Community Centre

Come hear all about this wonderful, literacy program and how our volunteers and their beautiful dogs are making a difference in the lives of school children across Australia – including here in Mapleton!

When: Wednesday 24 June
Time: 10am to 11am

Refreshments will be served, so be sure to register your interest. E: mapletonlibrary@gmail.com by 17/6/26



Council endorsed the Active Transport Plan 2026 at its Ordinary Meeting on Thursday, 21 May 2026.

The Active Transport Plan (the Plan) aims to create a more connected, safe, healthy and sustainable region where people of all ages, genders and abilities feel supported to use active transport.

Sunshine Coast Council has a vision to be recognised as “Australia’s most sustainable region. Connected. Liveable. Thriving.” It is a place where getting around is easy, and active transport infrastructure provides local connectivity and integrates with efficient public transport systems. Everyone should feel welcome and confident using our transport networks, which are safe, accessible and inclusive.

For the Plan, active transport is defined as moving from place to place using physical effort by:

- walking, including pushing a pram or using a cane for assistance
- riding, including a bicycle, scooter or legal e-bike
- rolling, including a wheelchair or mobility scooter.

The Plan has been informed by our community’s needs. During early engagement, the community identified that:

- increasing connectivity
- removing barriers to inclusivity
- valuing the needs of all path users

are essential to support more people to use active transport. Many respondents indicated they currently ride for recreation but not yet for transport.

The Plan is also informed by an assessment of the walking and riding networks. This identified that established residential areas have fewer paths, while wider paths and separated cycle tracks are predominantly located in emerging communities.

Global, national, State and local strategies and policies have guided and informed the Plan.

Population growth on the Sunshine Coast, along with major projects and events, highlights the need for an inclusive and accessible active transport network that connects to:

- The Wave and other public transport stations and stops
- Brisbane 2032 Olympic and Paralympic Games venues.

For more information:

<https://www.sunshinecoast.qld.gov.au/council/planning-and-projects/council-plans/sunshine-coast-active-transport-plan>

REPEATS

Blackall Range Visual Artists Exhibition

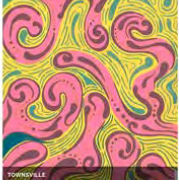
Sat June 27th until Tues July 2nd 10 am to 3 pm daily

St. Mary's Hall Montville



40,000 ORIGINAL ARTWORKS
15,000 ANONYMOUS ARTISTS
\$100 EACH

OUR COLLECTIONS -



LOCAL ARTISTS GO INCOGNITO. CAN YOU SPOT THEIR WORK?

A small group of Mapleton artists has been quietly creating original A5-sized artworks for one of Australia's most unusual art events – the Incognito Art Show. It's Australia's biggest and most inclusive not-for-profit art show, with a mission to support arts organisations and inspire a new generation of art collectors.

This is no typical art exhibition though; there's a delicious twist! Every artwork is sold at a flat rate of \$100, and the artist remains completely anonymous until after the work is bought. Profits raised will go towards programs that support artists living with disability.

Somewhere in this year's show, nestled among works by 15,000 artists from across the country, are pieces created right here in our little corner of the world. Who made them? We're not telling. That's the whole point.

Browse and shop at incognitoartshow.com – you might just take home a piece of local history without even knowing it!

Child Safe Organisations

National Principles for Child Safe Organisations

- 1 Child safety and wellbeing is embedded in organisational leadership, governance and culture.
- 2 Children and young people are informed about their rights, participate in decisions affecting them and are taken seriously.
- 3 Families and communities are informed, and involved in promoting child safety and wellbeing.
- 4 Equity is upheld and diverse needs respected in policy and practice.
- 5 People working with children and young people are suitable and supported to reflect child safety and wellbeing values in practice.
- 6 Processes to respond to complaints and concerns are child focused.
- 7 Staff and volunteers are equipped with the knowledge, skills and awareness to keep children and young people safe through ongoing education and training.
- 8 Physical and online environments promote safety and wellbeing while minimising the opportunity for children and young people to be harmed.
- 9 Implementation of the national child safe principles is regularly reviewed and improved.
- 10 Policies and procedures document how the organisation is safe for children and young people.

For information and resources, go to <https://childsafe.humanrights.gov.au>

Australian Human Rights Commission | Australian Government

RECENT DEVELOPMENT APPLICATIONS IN DIVISIONS 5 AND 10:

This is an initiative of Pop Up Community News aimed at providing information and heightened awareness as to developments in our region. Hopefully the information will provide a spring board should anyone wish to dive deeper into any specific application. Using the link:

<https://developmenti.sunshinecoast.qld.gov.au/> or entering "development i sunshine coast" into a browser will take you to the Development i home page. Click on "Application Search" and enter the application number. Select "Details" if you want to dive deeper. The supporting documents can typically be downloaded or viewed by selecting "Application Documents" in the right hand section of the screen.

In the listings below, typically a brief editorial comment is provided after each application description. These are shown in italics.

DIVISION 10:

Lodged: 03/06/2026 DA#: OPW26/0235

10 Memorial Drive, Eumundi – Earthworks. *Relates to a number of applications for a service station and other commercial developments.*

Lodged: 03/06/2026 DA#: OPW26/0236

8 Stevens St YANDINA – Landscaping – Pearl Pacific Properties Pty Ltd – Aurora Project Management. *Relates to MCU21/0003 – to establish a service station.*

Lodged: 08/06/2026 DA#: MCU26/0136

29 Mathew St NAMBOUR – Health Care Services – Base Design and Construct Group – Urbicus Pty Ltd. Revamp into a medical centre.

Lodged: 12/05/2026 DA#: OPW26/0243 & DBW26/0086 & CAR26/0294

3 Ivory Ct BURNSIDE – Retaining Wall & Patio – Earthworks – Danny Floyd and Stephanie Kerr – Northshore Building Approvals Qld. *Relates to MCU21/0327 Dual Occupancy X 10.*

Lodged: 08/06/2026 DA#: RAL20/0134.03

57 Blackall Tce NAMBOUR – Extension to Currency Period – Infinity Ce Pty Ltd . Request to extend currency period to 15/08/2027, and minor change: *initial approval states maximum depth of fill to be 1m above normal ground and the site to have no more than 5% slope. Seems these two objective are mutually exclusive, so request to increase depth of fill to comply with 5% slope.*

Lodged: 29/05/2026 DA#: RAL26/0049 & RAL26/0050 & MCU26/0128

41, 95 & 97 Walli Mountain Rd KENILWORTH – 3 Lots into 3 Lots – Short Term Accommodation (8 x Units & 1 x Managers Residence) – Walli Projects Pty Ltd – Urban Strategies Pty Ltd. *Boundary realignments, easements, driveways, 8 self check in, 1 bed, 1 bath studio cabins, with no kitchens. Managers residence, main bed, ens, 2nd bed, no 2nd bath, storage/MPR with laundry in a cupboard. 8.5m by 12m surrounded by 1.5m wide veranda, with cable and hip roof and church windows, on 15.6ha.*

DIVISION 5:

Lodged: 02/06/2026 DA#: MCU22/0075.06

185-205 Diddillibah Rd WOOMBYE - Minor Change to Existing Approval - Tourist Park - Highgate Developments Pty Ltd - Murray & Associates (QLD) Pty Ltd. *Minor Change... 19 Glamping Tents to be replaced with 19 cabins, and a change to staging of the development. This is the 6th of a series of minor changes.*

Lodged: 02/06/2026 DA#: OPW22/0381.02

10 Hilltop Crescent MALENY - Minor Change to Existing Approval - Earthworks, Roadworks, Stormwater, Electrical and Street Lighting, Landscaping - Bo Williams - CadCon Surveying & Town Planning. *Change to the Electrical Design.*

Lodged: 03/06/2026 DA#: OPW22/0266.01

8 Keil St WOOMBYE - Generally In Accordance - Electrical Reticulation - Jeannotte Engineering. *No documents published.*

Lodged: 03/06/2026 DA#: MCU06/0144.04

32 & 26 Redmond Road WOOMBYE - Extension to Currency Period - Woombye Care Inc - Covey Associates Pty Ltd. *Request to extend to 23/06/2028. 50 Bed Residential Care Facility.*

Lodged: 04/06/2026 DA#: RAL26/0047

33-35, 37 & 39-43 Abbotts Rd PALMWOODS - 3 Lots into 3 Lots - Hillscorp Rise Pty Ltd - Innovative Planning Solutions. *Presents as a practical boundary realignment.*

Lodged: 03/06/2026 DA#: POS26/0101

8 Keil Street Woombye - Survey Plan SP358412 (1 into 4 Lots) - Land Surveying Dynamics. *Administrative. Approving Plans.*

BARUNG LANDCARE

IDENTIFYING RAINFOREST PLANTS OF THE BLACKALL RANGE: FERNS OF OUR RAINFORESTS 20 June, 9am to 11am

Ferns adorn our local rainforests, enchanting us with their shapes and foliage.

Staghorns, elkhorns, tree ferns, maidenheads, rasp ferns, and more, growing on trees, rocks, and in the ground. It can take a while, but when the ferns start increasing in variety and number in our revegetation areas, we know we have really made a difference.

Join Hilary Pearl and Rowena Thomas at the Barung Nursery for a two-hour workshop learning the ferns from our local rainforests. We estimate that there are roughly 40 native fern species on the range! In this workshop we will learn about the structure and unique terminology relating to ferns, their lifecycle and evolutionary story. We will examine and learn about 20 species, and discover tricks to tell them apart from similar species.

We recommend you bring a pen, a torch (or a phone with a torch), and your own hand lens if you have one. Magnifying lenses and hand lenses will be available to use, and worksheets will be supplied. We will finish with a brief walk in the Barung Seed Forest.

Participation is limited to 15 places so please book in to attend!

Date: Saturday 20th June, 2026

Time: 9am start to 11am

Location: Barung Landcare Native Plant Nursery, Parkland Drive, Maleny 4552

Bookings:

<https://events.humanitix.com/identifying-rainforest-plants-of-the-blackall-range-ferns>

THE COUNTDOWN IS ON!

This weekend, the curtain rises on Patience, Gilbert & Sullivan's delightfully witty comic opera, presented by the Maleny Singers and accompanied by the wonderful Maleny Performing Arts Orchestra.

Don't leave it too late to book your seats. Tickets available from Maleny Visitor Information Centre (phone 5499 9033) or online at www.trybooking.com/DJMPE

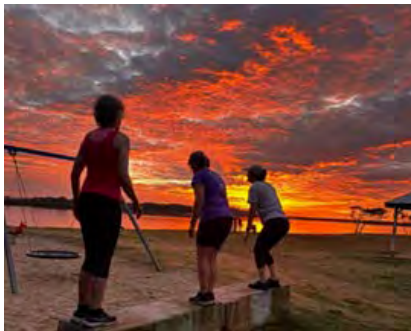
Enjoy memorable melodies, colourful costumes, larger-than-life characters and plenty of laughs as we bring this much-loved classic to the stage at the Maleny Community Centre.

Matinee performances:

- Saturday 20 June
- Sunday 21 June

Whether you're a lifelong Gilbert & Sullivan fan or discovering Patience for the first time, we'd love you to join us for an entertaining afternoon of live music.

We can't wait to welcome you to Patience!



SUNRISE FITNESS

Break away from the mundane gym routine and harness the energy of the outdoors!

This introductory level outdoor fitness session is designed to build strength, conditioning, balance and wellness for all age groups. Join Sunshine Coast Wellness and focus on functional movements that help you feel stronger and more energetic in your daily life. Build a sustainable healthy lifestyle combining fitness with fun and social connection in a beautiful location.

Day: Mondays (weekly)

Time: 6.30am - 7.30am

Location: Chambers Island, Duporth Avenue, Maroochydore

Age Group: All ages over 18 years

Cost: \$10 general fee or \$5 Health Care/Pensioner Card

Provider: Sunshine Coast Wellness – 0422 301 812 | sunshinecoastwellness@outlook.com

Bookings: Not required - however if you have an underlying health condition, please call Sunshine Coast Wellness to discuss on 0422 301 812 prior to your first session



Dark Sky Reserve declared for Sunshine Coast hinterland

Sunshine Coast hinterland communities treasure star-filled skies. Now, as Queensland’s first Dark Sky Reserve, everyone can help protect dark skies for future generations, as well as for wildlife, lower energy costs, lower emissions and hinterland businesses.

The Sunshine Coast International Dark Sky Reserve has officially been designated by DarkSky International as Queensland’s first Dark Sky Reserve.

The designation recognises our collective commitment to preserving the Sunshine Coast hinterland’s natural assets and night sky values and strong government and community partnerships - demonstrating the Sunshine Coast’s leadership in sustainability.

Spanning across 870 km², the Sunshine Coast International Dark Sky Reserve encompasses the Mary River catchment and adjoining State protected areas in the Sunshine Coast local government area. It includes townships such as Maleny, Mapleton, Montville, Wittia, Flaxton, Kenilworth and Conondale.

As a valued stakeholder, thank you for your contributions to the project.

Further information about the Sunshine Coast International Dark Sky Reserve, including details of the formal designation, is available on : Council’s website:

<https://www.sunshinecoast.qld.gov.au/environment/dark-sky>

DarkSky International’s website: <https://darksky.org/places/sunshine-coast/>



© Kenneth Wishaw

**LIST OF COMMUNITY ORGANISATIONS
for Flaxton, Kureelpa, Mapleton
and Montville**

Blackall Range Lions Club blackallrangelionsclub@outlook.com;
facebook.com/blackallrangelionsclub/ <http://www.brhc.org.au>

Blackall Range Visual Artists Thursdays, Mapleton Bowls Club

Blackall Range Woodcrafter's Guild secretary.brwg@gmail.com

Blackall Range Zonta Club membership@zontablackallrange.org.au.
www.zontablackallrange.org.au

Bush and Beach Walking Group bushbeachwalkers@gmail.com

Hinterland Quarry Action Group T: 0416 155116 aveivers@iprimus.com.au

History Group montvillehistorygroup@gmail.com

Kureelpa & Dulong Community Hall kureelpahall@gmail.com

Mah-jong Wednesday weekly at Mapleton Bowls Club

Maleny Golf Club T: 5499 9960 gm@malenygolfclub.com.au
www.malenygolfclub.com.au

Maleny Scottish Country Dancing Monday nights, Maleny RSL Hall: 0429
654033: eshjay2010@gmail.com

Mapleton and District Community Association madca@gmail.com

Mapleton Art Thursdays Mapleton Library Community Centre. Contact:
mapletonlibrary@gmail.com

Mapleton Bowls Club T: 5445 7913 www.mapletonbowlsclub.com.au

Mapleton Bridge Club bridgeaustralia.org
mapletoncontractbridgeclub@gmail.com

Mapleton Choir Kureelpa Hall themapletonchoir@outlook.com

Mapleton Country Market countrymarket.mapleton@gmail.com

Mapleton Craft Group Wednesdays 9-12noon, Mapleton Bowls Club

Mapleton Fire Warden T: 0493 044052

Mapleton Library Community Centre mapletonlibrary@gmail.com
www.mapletonlibrary.au T 5445 7011

Mapleton Hall and Sportsground Trustees mapletonhall@gmail.com

Mapleton Men's Shed www.mapletonmenshed.org.au

Mapleton Movers Heart Foundation Walking Group T: 0417 476768

Mapleton State School Parents and Carers Association:
mapletonpandc@gmail.com

Mapleton Quilters Mondays 9-12 noon, Mapleton Bowls Club

Mapleton RSL Sub Branch Matt Dykes 0427263595 mdykes7@gmail.com

Mapleton Rural Fire Brigade First Officer T: 0428 137927, Secretary: 0499
883019

Mapleton Tennis Club mapletontennis@gmail.com
www.tennis.com.au/mapleton-tennis-club

Montville Anglican Church huesong2@gmail.com

Montville Chamber of Commerce info@montvillecommerce.com.au

Montville Masonic Lodge montville260@outlook.com

Montville Rural Fire Brigade montville.rfb@bigpond.com

Montville School P&C msspandcpresident@gmail.com

Montville St Mary's Hall stmaryshallmontville@gmail.com

Montville Tennis Club montvilletennisclub1925@gmail.com

Montville Uniting Church minister@ourcommonlife.org.au

Montville Village Association secretary.mva@gmail.com
www.montvillevillageassociation.org.au

Probus Club of North Blackall Range Secretary 0493 632703
nbrprobus@gmail.com

Range Community Gym and Fitness Centre mapletongym@gmail.com
www.rangecommunitygym.com.au

Range United Soccer Club info.rangeunited@gmail.com

St Mary's Anglican Church Montville stmarysmontville@gmail.com

Sunshine Coast U3A u3aoffice@u3asunshine.org.au

The Flaxton Craft Group lkathypatterson@gmail.com

The Range Community Kindergarten www.rangekindy.qld.edu.au
rangekindergarten@bigpond.com

Wildlife Volunteers Association Inc (WILVOS) Hotline 5441 6200
www.wilvos.org.au

Schools

Blackall Range Independent School officel@brschool.com.au T: 5476 4301

Mapleton State School principal@mapletonss.eq.edu.au T: 5456 3333

Montville State School admin@montvilless.eq.edu.au T: 5452 1333

Facebooks

Mapleton Community Facebook page

www.facebook.com/groups/mapletonqueensland/

Montville Community Facebook page

www.facebook.com/groups/780987252874906/

Flaxton Community Facebook page

www.facebook.com/groups/388815358233538

Mapleton Library Community Centre Facebook page

www.facebook.com/p/Mapleton-Community-Library-100064769136195/

Happenings – Montville and surrounds email newsletter

Subscribe: www.montvillevillageassociation.org.au/subscribe-to-happenings/ Editor: Editor.mvahappenings@gmail.com

If your organisation is not listed, please let us know.

Many thanks, nita

mapletonqueensland@gmail.com



Community brochure and poster display on the verandah of the Mapleton Library Community Centre is a convenient place to promote your organisation.

If you are looking for information, check out this collection.

Currently overflowing with posters and brochures—there is something for everyone.



Helping Children Walk with Pride

Together we empower children to reach their potential.

RING PULLS



Alone we can do little,
Together we can make a
huge difference to
someone's quality of life.

Drop off at the
Mapleton Bowls Club
Mapleton Library Community Centre



LOCAL VENUES FOR HIRE

KUREELPA DULONG COMMUNITY HALL

Our modern and clean hall is available for hire for meetings, community events and classes.

Contact: Dianne Fitzgerald E: fitzies56@gmail.com

MAPLETON BOWLS CLUB

Cost: for meeting \$50.00. Rent of premises, or large gathering [Trivia] \$100.00

Space: Can accommodate up to 90 persons standing or 80 persons seated.

Other: The use of the Bar and its staff should be requested, while the use of the kitchen and/or its staff is limited and would need discussion.

Contact: The Club Secretary, Martin Lambe

E: mapletonbowlsclub350@gmail.com T: 0428 898734

MAPLETON COMMUNITY HALL and SPORTSGROUND

The historic timber 109 year old hall including grounds. Includes tables, chairs and a basic kitchen. Capacity is 110 persons in the hall.

To enquire email mapletonhall@gmail.com

Two tennis courts managed by The Mapleton Tennis Club are available for Hire.

MAPLETON LIBRARY COMMUNITY CENTRE

Obi Obi Road, Mapleton T: 5445 7011

E: mapletonlibrary@gmail.com

Cost: meeting \$20 per hour; plus use of the kitchen \$30 per hour

Includes: indoor and outdoor spaces, fully carpeted indoor; small kitchen; toilet inside; data projector with screen on the ceiling; 40 chairs, folding tables available. There are also small grass areas, gazebos available, chairs can be used on the grass.

MONTVILLE VILLAGE HALL

Our versatile hall is the perfect venue for everything from weddings to birthday parties to community gatherings. With ample space and beautiful views, you'll be sure to impress your guests.

Contact us today to make a reservation.

<https://www.montvillevillageassociation.org/village-hall-hire>

OBI OBI HALL

Obi Obi Hall is owned by the Obi Obi and Kidaman Creek communities, and operated by members of the Obi Obi and Kidaman Creek District Community Hall Association Inc.

856 Obi Obi Road, Obi Obi 4574; PO Box 276 Mapleton, 4560

Calendar, floor plan and more all on the following web site

<https://obiobihall.blog/obi-obi-hall/obi-obi-hall-hire/>

ST MARY'S HALL MONTVILLE ON THE VILLAGE GREEN

Perfect for workshops, small events, yoga/pilates classes, cosy concerts, art shows, club meetings, baby showers, family events. This space is fully accessible, now air-conditioned (warm in winter and cool in summer), low cost with a free to use kitchenette. Maximum capacity 50 seated, or 12 yoga mats.

For bookings and enquiries:

E: stmaryshallmontville@gmail.com or T: 0475 773810



JPs in the Community

13 QGOV (13 74 68) www.qld.gov.au/jps

This site's volunteers are supported by the Justices of the Peace Branch, the Department of Justice and Mapleton Library Community Centre.

Hours of operation		
Monday	9.00am-11.30am	*Phone 07 5445 7182
Tuesday	By appointment*	
Wednesday	By appointment*	
Thursday	9.00am-11.00am	
Friday	By appointment*	
Saturday	By appointment*	
Sunday	Closed	

If this signing site is closed, visit www.qld.gov.au/findingp to locate the nearest signing site currently open.

DELIVERING FOR QUEENSLAND Queensland GOVERNMENT

PROCEDURES FOR RANGE AND HINTERLAND POPUP COMMUNITY NEWS MANAGEMENT

The Range and Hinterland PopUp Community News was launched in 2016. The News has gone through many changes with no one organisation controlling the News—it is truly a community news: for the community by the community. Auspiced by the Mapleton Library Community Centre since 2016 which provides insurance, financial support and much more.

The News offers opportunity to promote events and provide information to all community groups across the Range and the Hinterland
Thank you everyone.

The Range and Hinterland PopUp Community News is edited, published and distributed by volunteers.

There will be no discussion or correspondence on matters pertaining to the Range and Hinterland PopUp Community News.

- All articles for the Range and Hinterland PopUp Community News are to be sent to mapletonqueensland@gmail.com
- If it is important to have an article included in a specific edition, forward article as early as possible. Generally the cut off time for publication is noon Tuesday each week but as this is a fully volunteer publication inclusion is not guaranteed.
- Articles can be emailed at any time. Please include contact name and contact details.
- All articles are to be sent digitally unless otherwise pre-arranged.
- Pop up Community News is published weekly but open to review at any time. A short holiday over Festive Season each year to give the volunteers a well earned holiday.
 - Currently Thursday night for distribution is the target time.
- No lost animals, political, religious, personal opinions or missing person notification will be published.
- Negative or derogatory comments will not be published.

Email mapletonqueensland@gmail.com requesting guidelines.

Anyone wishing to receive the Range and Hinterland PopUp Community News, send your email address to mapletonqueensland@gmail.com

Anyone wishing to cease receiving the Range and Hinterland PopUp Community News, send your email to mapletonqueensland@gmail.com

Disclaimer: The Editor and Team assumes no responsibility or liability for the content of this publication.

Keep informed through the web and social media
www.facebook.com/groups/mapletonqueensland/

www.mapletonlibrary.au

Remember, if you wish to receive the

RANGE AND HINTERLAND POPUP COMMUNITY NEWS

Email mapletonqueensland@gmail.com

Current circulation over 4,500

