

RANGE AND HINTERLAND POPOP COMMUNITY NEWS

Weekly news

A community service since 2016

11 June 2026

Issue 493

What is on this weekend?

** 12-14 June: Nambour Show

** 13 June: Montville Markets, 7:30am-12Noon

** 13-14 June: *Patience*, Maleny Singers



Dark Sky Reserve declared for Sunshine Coast hinterland

Sunshine Coast hinterland communities treasure star-filled skies. Now, as Queensland's first Dark Sky Reserve, everyone can help protect dark skies for future generations, as well as for wildlife, lower energy costs, lower emissions and hinterland businesses.

The Sunshine Coast International Dark Sky Reserve has officially been designated by DarkSky International as Queensland's first Dark Sky Reserve.

The designation recognises our collective commitment to preserving the Sunshine Coast hinterland's natural assets and night sky values and strong government and community partnerships - demonstrating the Sunshine Coast's leadership in sustainability.

Spanning across 870 km², the Sunshine Coast International Dark Sky Reserve encompasses the Mary River catchment and adjoining State protected areas in the Sunshine Coast local government area. It includes townships such as Maleny, Mapleton, Montville, Witta, Flaxton, Kenilworth and Conondale.

As a valued stakeholder, thank you for your contributions to the project.

Further information about the Sunshine Coast International Dark Sky Reserve, including details of the formal designation, is available on : Council's website:

<https://www.sunshinecoast.qld.gov.au/environment/dark-sky>

DarkSky International's website: <https://darksky.org/places/sunshine-coast/>



CONTENTS

Dark Skies

Art Exhibition

Transport Plan

Maleny Singers

Community Boards

Sunrise Fitness

QCCC

Development Applications

Barung Workshop

Flora and Fauna

Community Services

Date Claims

Local Organisations' Contacts
and more

LOCAL ARTISTS GO INCOGNITO. CAN YOU SPOT THEIR WORK?

A small group of Mapleton artists has been quietly creating original A5-sized artworks for one of Australia's most unusual art events — the Incognito Art Show. It's Australia's biggest and most inclusive not-for-profit art show, with a mission to support arts organisations and inspire a new generation of art collectors.

This is no typical art exhibition though; there's a delicious twist! Every artwork is sold at a flat rate of \$100, and the artist remains completely anonymous until after the work is bought. Profits raised will go towards programs that support artists living with disability.

Somewhere in this year's show, nestled among works by 15,000 artists from across the country, are pieces created right here in our little corner of the world. Who made them? We're not telling. That's the whole point. Browse and shop at incognitoartshow.com — you might just take home a piece of local history without even knowing it!

SUNSHINE COAST ACTIVE TRANSPORT PLAN

Council endorsed the Active Transport Plan 2026 at its Ordinary Meeting on Thursday, 21 May 2026.

The Active Transport Plan (the Plan) aims to create a more connected, safe, healthy and sustainable region where people of all ages, genders and abilities feel supported to use active transport.

Sunshine Coast Council has a vision to be recognised as “Australia’s most sustainable region. Connected. Liveable. Thriving.” It is a place where getting around is easy, and active transport infrastructure provides local connectivity and integrates with efficient public transport systems. Everyone should feel welcome and confident using our transport networks, which are safe, accessible and inclusive.

For the Plan, active transport is defined as moving from place to place using physical effort by:

- walking, including pushing a pram or using a cane for assistance
- riding, including a bicycle, scooter or legal e-bike
- rolling, including a wheelchair or mobility scooter.

The Plan has been informed by our community’s needs. During early engagement, the community identified that:

- increasing connectivity
- removing barriers to inclusivity
- valuing the needs of all path users

are essential to support more people to use active transport. Many respondents indicated they currently ride for recreation but not yet for transport.

The Plan is also informed by an assessment of the walking and riding networks. This identified that established residential areas have fewer paths, while wider paths and separated cycle tracks are predominantly located in emerging communities.

Global, national, State and local strategies and policies have guided and informed the Plan.

Population growth on the Sunshine Coast, along with major projects and events, highlights the need for an inclusive and accessible active transport network that connects to:

- The Wave and other public transport stations and stops
- Brisbane 2032 Olympic and Paralympic Games venues.

For more information:

<https://www.sunshinecoast.qld.gov.au/council/planning-and-projects/council-plans/sunshine-coast-active-transport-plan>



Saturday 13th June

THE COUNTDOWN IS ON!

This weekend, the curtain rises on Patience, Gilbert & Sullivan's delightfully witty comic opera, presented by the Maleny Singers and accompanied by the wonderful Maleny Performing Arts Orchestra.

Don't leave it too late to book your seats. Tickets available from Maleny Visitor Information Centre (phone 5499 9033) or online at www.trybooking.com/DJMPE

Enjoy memorable melodies, colourful costumes, larger-than-life characters and plenty of laughs as we bring this much-loved classic to the stage at the Maleny Community Centre.

Matinee performances:

- Saturday 13 June
- Sunday 14 June
- Saturday 20 June
- Sunday 21 June

Whether you're a lifelong Gilbert & Sullivan fan or discovering Patience for the first time, we'd love you to join us for an entertaining afternoon of live music.

We can't wait to welcome you to Patience!



SUNRISE FITNESS

Break away from the mundane gym routine and harness the energy of the outdoors!

This introductory level outdoor fitness session is designed to build strength, conditioning, balance and wellness for all age groups.

Join Sunshine Coast Wellness and focus on functional movements that help you feel stronger and more energetic in your daily life.

Build a sustainable healthy lifestyle combining fitness with fun and social connection in a beautiful location.

Day: Mondays (weekly)

Time: 6.30am - 7.30am

Location: Chambers Island, Duporth Avenue, Maroochydore

Age Group: All ages over 18 years

Cost: \$10 general fee or \$5 Health Care/Pensioner Card

Provider: Sunshine Coast Wellness – 0422 301 812 |

sunshinecoastwellness@outlook.com

Bookings: Not required – however if you have an underlying health condition, please call Sunshine Coast Wellness to discuss on 0422 301 812 prior to your first session

Weekly Activity Update

A busy start to the week, with a Grade 9 group from Gympie and a Grade 4 camp from Brisbane both arriving on Monday – quite a spread of ages on site at once. It is always interesting watching the energy of a Grade 9 cohort alongside a group of Grade 4s having their first night away from home, but it is part of what makes a big camp centre like Mapleton tick along so well. On Wednesday, both groups head home and are replaced by one large Grade 5 camp from the Sunshine Coast, settling in for the rest of the week.

Alongside all of this, a ladies craft group will be onsite for the week, making the most of our splendid winter weather – crisp mornings, clear skies and plenty of cosy corners to settle into a project.

While Mapleton is humming, our Outdoor Education team will also be running a Grade 9 Survival Camp at Cobb and Co Nine Mile Camping Grounds for a group from the Darling Downs – bushcraft, teamwork and a genuine outdoor challenge in a beautiful setting.

A Note on Our Signage

Some residents may have noticed new signage around the site, including notices regarding access and trespass. From 1 January 2026, updated Child Safe legislation – introduced in response to the Royal Commission into Institutional Responses to Child Sexual Abuse – requires venues like ours to ensure that “physical environments promote safety and wellbeing while minimising the opportunity for children and young people to be harmed”. All visitors to the site are required to register with reception on arrival, and casual access to our grounds is not permitted. We appreciate the community’s understanding – this is simply us meeting our duty of care to every child in our keeping. Mapleton State School operates on the same principles.



National Principles for Child Safe Organisations

- Child safety and wellbeing is embedded in organisational leadership, governance and culture.
- Children and young people are informed about their rights, participate in decisions affecting them and are taken seriously.
- Families and communities are informed, and involved in promoting child safety and wellbeing.
- Equity is upheld and diverse needs respected in policy and practice.
- People working with children and young people are suitable and supported to reflect child safety and wellbeing values in practice.
- Processes to respond to complaints and concerns are child focused.
- Staff and volunteers are equipped with the knowledge, skills and awareness to keep children and young people safe through ongoing education and training.
- Physical and online environments promote safety and wellbeing while minimising the opportunity for children and young people to be harmed.
- Implementation of the national child safe principles is regularly reviewed and improved.
- Policies and procedures document how the organisation is safe for children and young people.

For information and resources, go to <https://childsafe.humanrights.gov.au>

RECENT DEVELOPMENT APPLICATIONS IN DIVISIONS 5 AND 10:

This is an initiative of Pop Up Community News aimed at providing information and heightened awareness as to developments in our region. Hopefully the information will provide a spring board should anyone wish to dive deeper into any specific application. Using the link: <https://developmenti.sunshinecoast.qld.gov.au/> or entering "development i sunshine coast" into a browser will take you to the Development i home page. Click on "Application Search" and enter the application number. Select "Details" if you want to dive deeper. The supporting documents can typically be downloaded or viewed by selecting "Application Documents" in the right hand section of the screen. In the listings below, typically a brief editorial comment is provided after each application description. These are shown in italics.

DIVISION 10:

Lodged: 03/06/2026 DA#: OPW26/0235

10 Memorial Drive, Eumundi – Earthworks. *Relates to a number of applications for a service station and other commercial developments.*

Lodged: 03/06/2026 DA#: OPW26/0236

8 Stevens St YANDINA – Landscaping – Pearl Pacific Properties Pty Ltd – Aurora Project Management. *Relates to MCU21/0003 – to establish a service station.*

Lodged: 08/06/2026 DA#: MCU26/0136

29 Mathew St NAMBOUR – Health Care Services – Base Design and Construct Group – Urbicus Pty Ltd. Revamp into a medical centre.

Lodged: 12/05/2026 DA#: OPW26/0243 & DBW26/0086 & CAR26/0294

3 Ivory Ct BURNSIDE – Retaining Wall & Patio – Earthworks – Danny Floyd and Stephanie Kerr – Northshore Building Approvals Qld. *Relates to MCU21/0327 Dual Occupancy X 10.*

Lodged: 08/06/2026 DA#: RAL20/0134.03

57 Blackall Tce NAMBOUR – Extension to Currency Period – Infinity Ce Pty Ltd . Request to extend currency period to 15/08/2027, and minor change: *initial approval states maximum depth of fill to be 1m above normal ground and the site to have no more than 5% slope. Seems these two objective are mutually exclusive, so request to increase depth of fill to comply with 5% slope.*

Lodged: 29/05/2026 DA#: RAL26/0049 & RAL26/0050 & MCU26/0128

41, 95 & 97 Walli Mountain Rd KENILWORTH – 3 Lots into 3 Lots – Short Term Accommodation (8 x Units & 1 x Managers Residence) – Walli Projects Pty Ltd – Urban Strategies Pty Ltd. *Boundary realignments, easements, driveways, 8 self check in, 1 bed, 1 bath studio cabins, with no kitchens. Managers residence, main bed, ens, 2nd bed, no 2nd bath, storage/MPR with laundry in a cupboard. 8.5m by 12m surrounded by 1.5m wide veranda, with cable and hip roof and church windows, on 15.6ha.*

DIVISION 5:

Lodged: 02/06/2026 DA#: MCU22/0075.06

185-205 Diddillibah Rd WOOMBYE – Minor Change to Existing Approval – Tourist Park – Highgate Developments Pty Ltd – Murray & Associates (QLD) Pty Ltd. *Minor Change... 19 Glamping Tents to be replaced with 19 cabins, and a change to staging of the development. This is the 6th of a series of minor changes.*

Lodged: 02/06/2026 DA#: OPW22/0381.02

10 Hilltop Crescent MALENY – Minor Change to Existing Approval – Earthworks, Roadworks, Stormwater, Electrical and Street Lighting, Landscaping – Bo Williams – CadCon Surveying & Town Planning. *Change to the Electrical Design.*

Lodged: 03/06/2026 DA#: OPW22/0266.01

8 Keil St WOOMBYE - Generally In Accordance - Electrical Reticulation - Jeannotte Engineering. *No documents published.*

Lodged: 03/06/2026 DA#: MCU06/0144.04

32 & 26 Redmond Road WOOMBYE - Extension to Currency Period - Woombye Care Inc - Covey Associates Pty Ltd. *Request to extend to 23/06/2028. 50 Bed Residential Care Facility.*

Lodged: 04/06/2026 DA#: RAL26/0047

33-35, 37 & 39-43 Abbots Rd PALMWOODS - 3 Lots into 3 Lots - Hillscorp Rise Pty Ltd - Innovative Planning Solutions. *Presents as a practical boundary realignment.*

Lodged: 03/06/2026 DA#: POS26/0101

8 Keil Street Woombye - Survey Plan SP358412 (1 into 4 Lots) - Land Surveying Dynamics. *Administrative. Approving Plans.*

BARUNG LANDCARE

IDENTIFYING RAINFOREST PLANTS OF THE BLACKALL RANGE: FERNS OF OUR RAINFORESTS 20 June, 9am to 11am

Ferns adorn our local rainforests, enchanting us with their shapes and foliage.

Staghorns, elkhorns, tree ferns, maidenhairs, rasp ferns, and more, growing on trees, rocks, and in the ground. It can take a while, but when the ferns start increasing in variety and number in our revegetation areas, we know we have really made a difference.

Join Hilary Pearl and Rowena Thomas at the Barung Nursery for a two-hour workshop learning the ferns from our local rainforests. We estimate that there are roughly 40 native fern species on the range! In this workshop we will learn about the structure and unique terminology relating to ferns, their lifecycle and evolutionary story. We will examine and learn about 20 species, and discover tricks to tell them apart from similar species.

We recommend you bring a pen, a torch (or a phone with a torch), and your own hand lens if you have one. Magnifying lenses and hand lenses will be available to use, and worksheets will be supplied. We will finish with a brief walk in the Barung Seed Forest.

Participation is limited to 15 places so please book in to attend!

Date: Saturday 20th June, 2026

Time: 9am start to 11am

Location: Barung Landcare Native Plant Nursery, Parkland Drive, Maleny 4552

Bookings:

<https://events.humanitix.com/identifying-rainforest-plants-of-the-blackall-range-ferns>

Grow Australian Plants

Thryptomene saxicola

Thryptomene saxicola is a small shrub to about 1 metre high with small, oval leaves about 5-10 mm long.

Like many members of the myrtle family, the leaves contain aromatic oils. The small, pale pink flowers have five petals and ten stamens. They occur in the leaf axils mainly in winter and spring but flowers will sometimes be seen at other times of the year.

Currently flowering in a garden in Mapleton.

Prefers the light grey soils of the Blackall Range.
Western Australian species



LOCAL

STRAW-NECKED IBIS

Threskiornis sinicollis

The Straw-necked Ibis is shy, tentative and avoids people. It is sometimes seen in pairs, but usually in large flocks. They fly in line or 'V' formation and can be found settling in dead trees by day. It is a bird of the Ibis and Spoonbill family. Adults have straw-coloured feathers on the neck, giving the bird its common name. It can be found throughout Australia in all suitable situations, except Tasmania, where it is a vagrant. It is also found in Indonesia, New Guinea, Norfolk Island and Lord Howe Island.

It is Australia's most common Ibis with a preference for the shallows of wetlands, swamps, waterways, pasture, grassland, parkland and sewage ponds. It is rarely found in arid or marine environments

They are a moderate sized 58-76 cm long black and white bird whose upper parts are black with an iridescent violet-green sheen. The head is covered with blackish bare skin, the eyes are brown, and the long black beak is down-curved. There is a black band on the breast and straw-like spiny feathers. The legs are reddish.

The sexes are similar but the males may have longer bills. Immatures are browner, their body plumage lacks gloss, have a mottled head, black legs, lack plumes on the neck and have a shorter and straighter bill.

They feed on water insects, molluscs, frogs and reptiles and are very fond of grasshoppers.

Breeding takes place Sept-Dec, or any time after flooding, in colonies, sometimes numbering thousands. Their saucer-shaped nests of reeds and twigs are built on rushes, bushes and trees.

Thank you Eric Anderson

Images: A small group of Straw-necked Ibis at a lagoon

Adult Straw-necked Ibis

Juvenile Straw-necked Ibis



JP SERVICE

Monday mornings from 8:30am to 11:30am without an appointment at the Mapleton Library Community Centre.

Or Thursday mornings 9am to 11am.

Telephone 5445 7182 for a booking in Mapleton at another time.

COMMUNITY WELCOME PACK FOR NEW RESIDENTS

Collect your pack from the
Mapleton Library Community Centre

Borrowing hours: 1pm to 4pm week days
Saturdays 9am to 12noon

What does the pack include?

Community organisations brochures

Range and Hinterland PopUp Community News - a free weekly news for everyone with information about the events in your neighbourhood

List of community organisations in Mapleton, Flaxton and Montville

Zonta Business Directory

And much more

Also available at the COMMUNITY STALL at the monthly Mapleton Country Market.

RURAL FIRE BRIGADES

Call 000 for emergencies

Kureelpa

First Officer 0429 068090

Fire warden Kureelpa 0477 048616

Fire Warden Dulong 0407 412539

E: kureelparfb@gmail.com

Address: Braford Rd, Kureelpa

Post: Kureelpa RFB P.O. Box 4931, SCMC, 4560

Monthly Meetings: 7:30pm on the first Thursday

Mapleton

First Officer (all operational matters): 0428 137927

Fire Warden (fire permits, safety checks): 0499 778806

Secretary (new members, administration): 0499 883019

W: <https://www.facebook.com/mapletonruralfirebrigade/>

E: MapletonRFB@gmail.com

Address: 37 Obi Obi Road, Mapleton 4560

Post: PO Box 366, Mapleton 4560

Monthly Training: 5:30pm on the 2nd Tuesday

Monthly Meeting: 5:30pm on the 3rd Tuesday

Montville

Call Mark Roderick, First Officer on 0409 480058 for queries and training information

Call John Watson, Fire Warden on 0477 712175 for permits

The team meets every second Monday at 7.00pm and on the final Wednesday of each month at 7.00pm

MONTVILLE UNITING CHURCH

Services are held each Sunday at 8.15am when a combined service is held at Maleny Uniting Church at 9.45pm. All welcome.

Minister: Rev Nathan Barton
E: minister@ourcommonlife.org.au
M: 0429 632527

The church is open as a Reflection Gallery every day from at least 10am till 3pm.

ST. MARY'S ANGLICAN CHURCH

On the green, Montville
Sunday Eucharist at 8am
Wednesday Meditation with Maureen 9am
Baptisms, funerals and wedding enquiries welcome
Parish Office: 5499 9130
E: stmarysmontville@gmail.com

Date Claims

13 June Montville Markets

13-14,20-21 June Maleny Singers.

19 June Friday Night Dinner, Mapleton Bowls Club.

24 June Story Dogs.

3 July Fun and Games, Mapleton Library Community Centre.

15 August Plants and Bake Stall, Mapleton.

3 October Spring Fair, Maleny Garden Club.

October Lions Community Dinner, Flaxton Gardens.

Disclaimer: The Editor and Team assume no responsibility or liability for the content of this publication.



Kureelpa Hall—1st Saturday of every month at 8am.

Mapleton 3rd Wednesday every month at 9am [in the grounds of the RangeCare Op Shop].



Weekly Activity Update

This weekend QCCC Mapleton is hosting a Women's Retreat — a quieter, reflective kind of gathering that suits the Range beautifully at this time of year. If you spot groups of women enjoying a coffee in town or browsing through Montville over the weekend, there is a good chance they are our guests making the most of everything the area has to offer.

Next week opens with a Grade 6 group from Brisbane arriving Monday for a mid-week camp — a year level that tends to arrive with a good mix of confidence and curiosity, often making it one of the more enjoyable cohorts on site.

Wednesday brings another changeover, with two schools arriving as the Grade 6 group heads home. A Grade 5 cohort from Brisbane joins us alongside a Grade 8 group from the Sunshine Coast Hinterland, whose program will extend beyond the main site out to our Kidcaff Farm property for an overnight camping experience. There is something about a farm stay that adds a different texture to a school camp — open space, fresh air, and a pace that is just a little slower than the main site.

For the Community – Chaplaincy Fundraising Dinner

Last Friday evening, QCCC Mapleton had the privilege of hosting the Blackall Range Chaplaincy Fundraising Dinner — and what a night it was. More than 150 people gathered here on Obi Obi Road for a three-course dinner, live entertainment and a silent auction, with the warmth of the evening matched only by the generosity of those who came. When the night was done, approximately \$15,000 had been raised for chaplaincy services at Mapleton and Maleny primary schools.



QCCC provided the meal free of charge, because we believe the cause is worth it. Our chaplains do quiet, consistent, often unseen work in school communities — walking alongside kids and families through some genuinely hard moments. Being able to help fund that work, right here on the Range, is one of the ways we can give something back to the village that has been home to us for more than forty years. We are grateful to everyone who came, and to the chaplaincy team for trusting us with the night.




REPEATS

ART EXHIBITION

TRACE

**MOMENTS ENCOUNTERED
NATURE TRANSLATED**

EarthfireART Ceramics explores the diverse Australian landscape through handmade ceramic forms, where each work becomes a trace of texture, memory and connection to place.



'Shifting Sands'

June 8
until
July 4

Mapleton Library Community Centre
Obi Obi Road, Mapleton



@earthfireart.ceramics
earthfireart.ceramics@gmail.com

Mapleton Library Community Centre

RENEW YOUR MEMBERSHIP

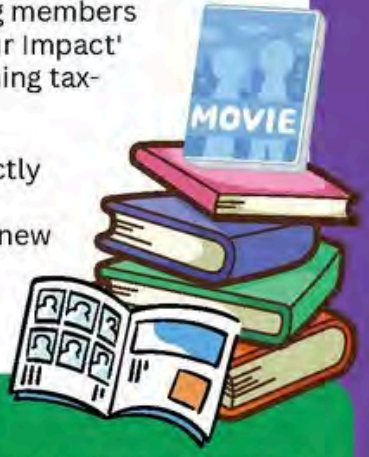
KEEP THE STORIES COMING!



Membership fees for 2026-7 are still \$12

But this year, we're asking members to consider a 'Double Your Impact' option by adding a matching tax-deductible donation.

The extra \$12 will go directly to our building extension fund, helping us create a new multi-purpose space for everyone to enjoy.



Ways to pay

- Drop in 1-4pm weekdays, 9am-12 noon Sat
- Pay online at <https://mapletonlibrary.au/join-the-library/> (reference 'membership')
- By direct bank transfer to Mapleton Community Library Inc. BSB 484799. Account # 165959608 (reference 'membership')



10 Obi Obi Rd, Mapleton
☎ 5445 7011

✉ mapletonlibrary@gmail.com





Not-for-profit Community Gym

We welcome all ages (15+) & fitness levels

We will help you achieve your health and fitness goals whether it is to increase fitness, stability, strength, mobility or mental health & wellbeing

- individual programs
- classes – senior strength & stability, circuit, boxing, yoga, tai chi
- qualified instructors
- flexible membership
- no lock-in contracts
- friendly & social

Contact: Paul 0439 670 629

Tina 0493 101 730

Or drop into the gym – we are located behind the Mapleton Bowls Club overlooking the Lilyponds (5 Post Office Rd, Mapleton)www.rangecommunitygym.com.au

Your Lions Club is celebrating!

Thanks to our local communities, this year's **A Taste of the Hinterland** was an outstanding success. Some have said it was the best ever.

This was in no small way due to the generosity and community mindedness of The Barn on Flaxton. What a varied and delicious range of finger food they provided for us. Our food producers provided us with a range of delicious tastes and great raffle prizes were donated by our local MPs, Sunshine & Sons, The Barn and Woombye Cheese.

The Barn was filled with conversation and laughter, and we all had a happy evening.

Lions thank Dani and Rachele and their staff at The Barn, our tasting providers, and you, our local community.



REPEATS

oriana presents

An Oriana Songbook

Oriana Choir

Conducted by Founder Daniel Calder

Stunning a cappella, rich harmonies, and beautifully crafted choral music

Accompanied by Denis Feletto

Also performing: Sunshine Coast Youth Choir

Conducted by Sarah Laws and accompanied by Annabelle Clucas

Sunday June 28, 2:00pm

Stella Maris Primary School Hall, Maroochydore

Saturday July 4, 1:00pm

St Patrick's Catholic Church, Gympie

SCAN HERE FOR BOOKING INFO



ORIANA IS PROUDLY
SUPPORTED BY
**STORAGE
DIRECT**



Tickets: oriana.org.au

ENQUIRIES & MORE INFO

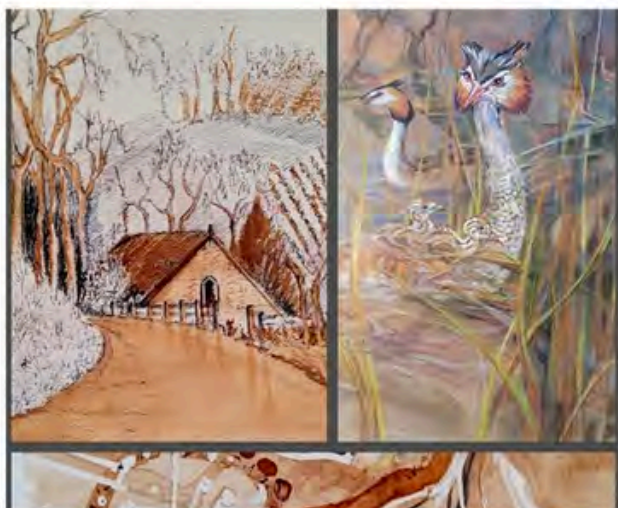
PH: 0431 542 343

ticketing@oriana.org.au

Blackall Range Visual Artists Exhibition

Sat June 27th until Tues July 2nd 10 am to 3 pm daily

St. Mary's Hall Montville



FREE FILM SCREENING
hosted by Waste Action Maleny (WAM)

ALL Welcome!

Suitable for

- Teens
- Over 8s
- No under 6s

Family Friendly
JOIN US FOR A SPECIAL SCREENING

This documentary (PG) is full of hope and inspiration. Damon Gameau (*2040, That Sugar Film*) takes eight children on a road trip across Europe to meet with powerful leaders to find solutions to our greatest environmental challenges. This is a coming-of-age journey that dares to imagine a brighter future. Packed with issues and ideas and likely to spark conversations at home, *Future Council* is great family viewing.

Saturday 06 June, 4:30 for a 5:00pm start
Verandah Room, behind Maleny Community Centre

Stay for Q&A & soup (by donation) (film length is 81mins)

Screening is FREE, but bookings through Humanitix will help with seating and soup-making.

red chair
PRESENTS

Karin SCHAUPP & Andrew VEIVERS

An evening of Spanish delights featuring exquisite works for classical and flamenco guitar.

Thomas Dixon Centre, Brisbane Sat 6 June, 7pm

Redland Performing Arts Centre Fri 19 June, 7pm

Maleny Community Centre Fri 12 June, 7pm

Majestic Theatre, Pomona Sat 20 June, 7pm

Coolum Civic Centre Sat 13 June, 7pm

Eudlo Hall Sun 21 June, 4pm

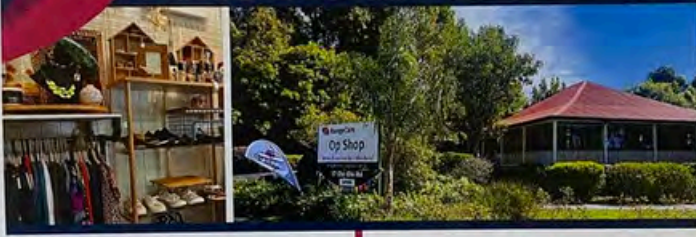
DELIVERING FOR QUEENSLAND **Queensland Government** **Sunshine Coast Council**

BOOK NOW
redchair.com.au

This project is supported by the Queensland Government through Arts Queensland. Supported by the Regional Arts Development Fund - a partnership between Queensland Government, through Arts Queensland, and Sunshine Coast Council to support local arts and culture in regional Queensland. Images by Cybele Malinowski and David Kelly.

You're Invited!

*Treasures & Togetherness:
An Op Shop Festival of
Giving, Finding, and Connecting!*



Where is it?

RangeCare Op Shop
17 Obi Obi Road, Mapleton

When is it?

Date: Monday 29th June 2026
Time: 10:00am - 1:00pm

Parking?

Mapleton Hall & Sportsground
31 Obi Obi Road,
Mapleton QLD 4560

What to Expect

- Free Sausage Sizzle
- Silent Disco
- Free Kids Activities and Games
- Food & Drinks
- Limited Edition Merchandise
- 40 Years Celebration Guest Book
- Op Shop Treasures
- Awesome Prizes to Be Won



RangeCare

Celebrating 40 Years of Making a difference to living

*This is a free
community event.
All are welcome!*



RangeCare

Celebrating 40 Years of Making a difference to living

RangeCare Family Fun Fair Parking & Transport Options

To help everyone arrive safely and comfortably,
we've arranged a 'Park & Ride' shuttle service:

Park & Ride - Shuttle to Event

If you're driving in for the event, please park at:
Mapleton Community Hall & Sportsground
31 Obi Obi Road
Mapleton QLD 4560

From there, you can take a short shuttle ride to the event. Shuttle service will run every 15 minutes to transport guests to and from the venue throughout the event.

If mobility issues are not a concern, feel free to take a short stroll to the RangeCare Op Shop instead - It's just up the road!

THIS EVENT IS FREE AND OPEN TO EVERYONE!
07 5445 7044 or email admin@brcg.org.au



Open Studios Launch

When: FRIDAY 17 July 2026 6pm

Where: Buderim Craft Cottage

Cost: FREE

Join us for the official launch of Open Studios Sunshine Coast 2026, presented in collaboration with Buderim Fibre Art and Surface Design. This special evening marks not only the beginning of this year's ten day art trail, but also the opening of the Buderim Fibre Art Group's latest exhibition - a vibrant celebration of textile artistry and impressive creative practice.

Doors open from 6.00pm and guests are invited to gather for welcome speeches and acknowledgements at 6.30pm as we open the 2026 program and celebrate the artists, makers, and supporters who bring Open Studios to life each year.

Enjoy complimentary light refreshments and nibbles as you explore the exhibition, meet participating artists, and connect with fellow creatives and supporters from across the Sunshine Coast.

This launch event is a chance to come together, celebrate local talent, and set the tone for ten days of Open Studios, artistic discovery, and community spirit.

Winter Solstice: A Concert Tour 18-21 June 2026



Australian cellist and artistic director Louise King joins Maleny-based pianist Eugenie Tamplon this June for A Winter Solstice, Fantasies, Nocturnes & Lullabies for Cello & Piano, a candle-lit micro concert tour travelling through Toowoomba, Eudlo, Brisbane and Maleny/Witta from 18 -21 June.

Inspired by the Winter Solstice and the longest nights of the year, the performances reimagine the traditional classical concert experience through intimate listening spaces, fairy lights, mulled-wine, homemade soup, blankets, journaling, poetry and quiet reflection. The atmospheric program features tranquil music by Debussy, Satie, Arvo Pärt, Max Richter, Nat Bartsch, Ola Gjeilo, Tchaikovsky, Einaudi and more, weaving together fantasies, nocturnes, lullabies and meditations for cello and piano.

Audiences are invited to sit traditionally or relax on yoga mats with blankets and cushions in a warm Nordic-inspired setting designed for stillness, contemplation and community connection during the heart of winter.

https://collections.humanitix.com/winter-solstice-a-concert-tour-18-21-june-2026?mc_cid=ac4a67f3c0&mc_eid=8beb50b296

Recent Development Applications in Divisions 5 and 10:

This is an initiative of Pop Up Community News aimed at providing information and heightened awareness as to developments in our region. Hopefully the information will provide a spring board should anyone wish to dive deeper into any specific application. Using the link:

<https://developmenti.sunshinecoast.qld.gov.au/> or entering "development i sunshine coast" into a browser will take you to the Development i home page. Click on "Application Search" and enter the application number. Select "Details" if you want to dive deeper. The supporting documents can typically be downloaded or viewed by selecting "Application Documents" in the right hand section of the screen.

In the listings below, typically a brief editorial comment is provided after each application description. These are shown in italics.

DIVISION 10:

Lodged: 25/05/2026 DA#: POS26/0098

15 Stanley St NAMBOUR – BFP For Duplex – Lot 1 & 2 on SP363867 – Murray & Associates. *Administrative. Approving Plans.*

Lodged: 25/05/2026 DA#: OPW26/0214

26 & 28 Hospital Rd NAMBOUR – Secondary Driveway – Athol Richard Dobson. *Additional 5M wide crossover, shared between the two lots.*

Lodged: 25/05/2026 DA#: MCU26/0121 & ERA26/0001 Impact Assessable Sewage Treatment 10 Focus Lane YANDINA – Utility Installation (Major Utility) – Bioresource Recovery Facility – Northern SEQ Distributor-Retailer Authority (Unitywater). Also: Sewage Treatment 10 Focus Lane YANDINA ERA No. 54(3)(c) – Mechanical Waste Reprocessing, ERA No. 61(2)(c) – Thermal Waste Reprocessing and Treatment, ERA No. 62(1)(c) – Resource Recovery and Transfer Facility Operation – Northern SEQ Distributor-Retailer Authority (Unitywater). *Impact Assessable. No explanation required, more people, more development, more black water..*

Lodged: 27/05/2026 DA#: OPW26/0217 & OPW26/0228

566 Valdora Rd VALDORA – Electrical Reticulation – Auspower Connect Pty Ltd, plus Stage 1 – 566 Valdora Rd VALDORA – Earthworks, Landscape, Stormwater & Vehicle Crossover – JIM Property Investments Pty Ltd – DME Projects. *Relates to RAL25/01131 lot into 8.*

Lodged: 26/05/2026 DA#: MCU26/0122 Impact Assessable

584 Valdora Rd VALDORA – Short Term Accommodation (3 x Cabins) – Mosh Properties Pty Ltd – Mallee Group Pty Ltd. *Impact Assessable. Additional cabin to 2 existing cabins. Proposed cabin is 1 bed 1 bath, 4900mm X 8800mm.*

Lodged: 29/05/2026 DA#: MCU26/0125 & OPW26/0222

52B Netherton Street NAMBOUR – Dual Occupancy – Stormwater, Earthworks, Landscaping, Driveway – Conseil Capital Pty Ltd – Adams & Sparkes Town Planning. *2 level, 3 bed, 2 bath, garage and carport, rumpus, attached dwellings. Skillion roof, high site cover.*

Lodged: 29/05/2026 DA#: MCU26/0126 & MCU26/0127 & MCU26/0128 & RAL26/0046

41 Walli Mountain Rd KENILWORTH – 3 Lots into 3 Lots – Short Term Accommodation (8 x Units & 1 x Managers Dwelling) – Walli Projects Pty Ltd – Urban Strategies Pty Ltd AND ROL Boundary Realignment (3 into 3 Lots). *Major development on large lot.*

Lodged: 29/05/2026 DA#: RAL21/0042.02

26 Sterling Drive EUMUNDI – Minor Change to Development Approval – Reconfiguration of 1 Lot into 9 Lots – Kelly Melvill – Murray & Associates (Qld) Pty Ltd. *Change to Waste Water Irrigation area and development foot print on Lot 3.*

Lodged: 02/06/2026 DA#: OPW26/0232

3 Dalzell Ct BURNSIDE – Vehicle Crossover – Leanne Schubert. *Request for a second cross over to a property with a 23m frontage in a small suburban court.*

Lodged: 06/05/2026 DA#: OPW26/0187

138 Image Flat Rd IMAGE FLAT – Vegetation Clearing – Ibrahim Dib. *Removal of a number of trees including "widow makers".*

Lodged: 12/05/2026 DA#: MCU26/0112 & OPW26/0197
 2 Buckle Street YANDINA - Dual Occupancy - Roadwork, Stormwater, Earthworks & Landscaping - Bosco Gordon - Pivotal Perspective Pty Ltd. 2 stand alone dwellings on 802m2 with skillion roofs, 529m2 (66%) hard surface cover. Both dwellings 2 bed, 1 bath, study 2 garage.

Lodged: 18/05/2026 DA#: MCU17/2090.04
 1 & 3 - 7 Old Gympie Rd YANDINA - Extension to currency period - Extension of Existing Shopping Centre - Yandina ELC PTY LTD - Yandina Properties One Pty LTD - Project Urban.

Lodged: 25/05/2026 DA#: MCU26/0117
 28 Gold Creek Rd NORTHARM - Dwelling House. 2 bed, 1 bath character log cabin as secondary dwelling.

Lodged: 24/05/2026 DA#: MCU26/0116
 22 National Park Rd NAMBOUR - Educational Establishment - Alta-1 College - IB Town Planning. Auditorium and learning spaces.

Lodged: 21/05/2026 DA#: MCU05/0043.05
 140 Finley Road Eumundi - Minor Change to Development Approval - B & B (6 Cabins) - Hayley Bonham & Rory Elsom - Mallee Group. Minor change... "New exterior terrace and entry porch introduced to approved villa design".

DIVISION 5:

Lodged: 25/05/2026 DA#: POS26/0081
 18 McKays Lane PALMWOODS - Survey Plan SP355647 (1 Lot into 2 Lots & Easement SA in Lot 2) - Murray and Associates Qld Pty Ltd. Administrative. Approving Plans.

Lodged: 22/05/2026 DA#: POS26/0089
 11 Northview Pl WOOMBYE - BFP for Duplex - Lots 1 & 2 on SP363656 - Sunrise Surveying. Administrative. Approving Plans.

Lodged: 25/05/2026 DA#: POS26/0027
 25 North Maleny Rd MALENY - Survey Plan SP360172 (2 Lots) - Project Urban. Administrative. Approving Plans.

Lodged: 25/05/2026 DA#: MCU22/0030.02 & OPW22/0044
 22 Empire Cres CHEVALLUM - Minor Change to Approval - Warehouse - PGMA INVESTMENTS PTY LTD - Project Urban. Minor changes to GFA and building height.

Lodged: 28/05/2026 DA#: MCU26/0124 & CAR26/0385
 216 Old Palmwoods Rd PALMWOODS - Dwelling House - Rachel Wright - CadCon Surveying & Town Planning. 4 bed, 2 bath dwelling gables and veranda.

Lodged: 01/06/2026 DA#: MCU26/0131 & OPW26/0023
 12 Fewtrell St PALMWOODS - Multiple Dwelling (7 x Units) - Stormwater, Earthworks, Landscaping, Vehicle Crossover & Frontage Works - Ecohaus Pty Ltd - Murray & Associates (QLD) Pty Ltd. 7 by 3 bed, 2 bath town houses (attached), 2 designs on 1429m2. 3 levels, 11 resident carparks, 2 visitor car parks, minimum area of soft planting at 142m2, rest hard surface. Gable roofs, all positioned in suburbia.

Lodged: 11/05/2026 DA#: MCU26/0108 & OPW26/0190
 38 Abbotts Road PALMWOODS - Dual Occupancy - Earthworks, Stormwater & Vehicle Crossover - Dung Tan Phan & Thanh Huyen Bui - URBN Town Planning Pty Ltd. 2 attached dwelling units on 1514m2. One 4 bed, 2 bath, 2 garage with living downstairs following to topography. The second, media, study, living, powder and 2 garage downstairs, and 3 bed, 2 bath upstairs, all with 17 degree hip roof.

Lodged: 06/05/2026 DA#: POS26/0076
 6 Wilson Rd ILKLEY – Covenant ONLY as per Condition 15 of MCU25/0307 – Copy of SP350996 – Plan of Covenant C in Lot 3 on SPI55482 – CadCon Surveying & Town Planning. Administration, *Approving Plans*.

Lodged: 12/05/2026 DA#: POS26/0085
 6 Teak Street Maleny – BFP for 8 Units and Balance Lot 100 – Survey Plan SP334652 (Lots 16 to 23 & Bal Lot 100 – Murray & Associates. Administrative, *Approving Plans*.

Lodged: 08/05/2026 DA#: POS26/0075
 43 Obi Lane North Maleny – Survey Plan SP359417 (2 Lots) – Murray & Associates. Administrative, *Approving Plans*.

Lodged: 14/05/2026 DA#: POS26/0038
 10 Hilltop Cres MALENY – Survey Plan SP350962 (6 Lots) – CadCon Surveying & Town Planning. *Administrative, Approving Plans*.

Lodged: 13/05/2026 DA#: RAL21/0119.01
 14 Karanne Dr MOOLOOLAH VALLEY – Minor Change to Development Approval – Reconfiguration of a Lot (1 Lot into 4 Lots) – Ron & Lynda Flanigan – Innovative Planning Solutions. *No records published*.



We just wanted to let you know about our new Nicklin Above & Beyond Awards that were launched last week. This new, annual Awards program will celebrate the individuals, groups and businesses across the entire Nicklin electorate who go the extra mile for their community. These Awards will recognise grassroots achievements, local leadership and the quiet contributors who make Nicklin a stronger, kinder & more connected place to live.

I'm sure you would all know an individual who goes above and beyond, or a community group deserving of recognition and so we'd love for you to go to our website – 2026 Above & Beyond Awards – Marty Hunt MP – to check out the categories and nominate someone. Nominations will close towards the end of June with voting in July. The program will culminate in an Awards night in August, where achievers will be recognised and celebrated.

**LOCAL ARTISTS ARE NEEDED
 TO DISPLAY THEIR ARTWORKS
 For a period of one month
 20% commission on sales
 MAPLETON LIBRARY COMMUNITY CENTRE
 E: mapletonlibrary@gmail.com**

LIST OF COMMUNITY ORGANISATIONS for Flaxton, Kureelpa, Mapleton and Montville

Blackall Range Lions Club blackallrangelionsclub@outlook.com;
facebook.com/blackallrangelionsclub/ <http://www.brhc.org.au>

Blackall Range Visual Artists Thursdays, Mapleton Bowls Club

Blackall Range Woodcrafter's Guild secretary.brwg@gmail.com

Blackall Range Zonta Club membership@zontablackallrange.org.au.
www.zontablackallrange.org.au

Bush and Beach Walking Group bushbeachwalkers@gmail.com

Hinterland Quarry Action Group T: 0416 155116 aveivers@iprimus.com.au

History Group montvillehistorygroup@gmail.com

Kureelpa & Dulong Community Hall kureelpahall@gmail.com

Mah-jong Wednesday weekly at Mapleton Bowls Club

Maleny Golf Club T: 5499 9960 gm@malenygolfclub.com.au
www.malenygolfclub.com.au

Maleny Scottish Country Dancing Monday nights, Maleny RSL Hall: 0429
654033: eshjay2010@gmail.com

Mapleton and District Community Association madca@gmail.com

Mapleton Art Thursdays Mapleton Library Community Centre. Contact:
mapletonlibrary@gmail.com

Mapleton Bowls Club T: 5445 7913 www.mapletonbowlsclub.com.au

Mapleton Bridge Club bridgeaustralia.org
mapletoncontractbridgeclub@gmail.com

Mapleton Choir Kureelpa Hall themapletonchoir@outlook.com

Mapleton Country Market countrymarket.mapleton@gmail.com

Mapleton Craft Group Wednesdays 9-12noon, Mapleton Bowls Club

Mapleton Fire Warden T: 0493 044052

Mapleton Library Community Centre mapletonlibrary@gmail.com
www.mapletonlibrary.au T 5445 7011

Mapleton Hall and Sportsground Trustees mapletonhall@gmail.com

Mapleton Men's Shed www.mapletonmenshed.org.au

Mapleton Movers Heart Foundation Walking Group T: 0417 476768

Mapleton State School Parents and Carers Association:
mapletonpandc@gmail.com

Mapleton Quilters Mondays 9-12 noon, Mapleton Bowls Club

Mapleton RSL Sub Branch Matt Dykes 0427263595 mdykes7@gmail.com

Mapleton Rural Fire Brigade First Officer T: 0428 137927, Secretary: 0499
883019

Mapleton Tennis Club mapletontennis@gmail.com
www.tennis.com.au/mapleton-tennis-club

Montville Anglican Church huesong2@gmail.com

Montville Chamber of Commerce info@montvillecommerce.com.au

Montville Masonic Lodge montville260@outlook.com

Montville Rural Fire Brigade montville.rfb@bigpond.com

Montville School P&C msspandcpresident@gmail.com

Montville St Mary's Hall stmaryshallmontville@gmail.com

Montville Tennis Club montvilletennisclub1925@gmail.com

Montville Uniting Church minister@ourcommonlife.org.au

Montville Village Association secretary.mva@gmail.com
www.montvillevillageassociation.org.au

Probus Club of North Blackall Range Secretary 0493 632703
nbrprobus@gmail.com

Range Community Gym and Fitness Centre mapletongym@gmail.com
www.rangecommunitygym.com.au

Range United Soccer Club info.rangeunited@gmail.com

St Mary's Anglican Church Montville stmarysmontville@gmail.com

Sunshine Coast U3A u3aoffice@u3asunshine.org.au

The Flaxton Craft Group lkathypatterson@gmail.com

The Range Community Kindergarten www.rangekindy.qld.edu.au
rangekindergarten@bigpond.com

Wildlife Volunteers Association Inc (WILVOS) Hotline 5441 6200
www.wilvos.org.au

Schools

Blackall Range Independent School officel@brschool.com.au T: 5476 4301

Mapleton State School principal@mapletonss.eq.edu.au T: 5456 3333

Montville State School admin@montvilless.eq.edu.au T: 5452 1333

Facebooks

Mapleton Community Facebook page

www.facebook.com/groups/mapletonqueensland/

Montville Community Facebook page

www.facebook.com/groups/780987252874906/

Flaxton Community Facebook page

www.facebook.com/groups/388815358233538

Mapleton Library Community Centre Facebook page

www.facebook.com/p/Mapleton-Community-Library-100064769136195/

Happenings – Montville and surrounds email newsletter

Subscribe: www.montvillevillageassociation.org.au/subscribe-to-happenings/ Editor.mvahappenings@gmail.com

If your organisation is not listed, please let us know.

Many thanks, nita

mapletonqueensland@gmail.com



Community brochure and poster display on the verandah of the Mapleton Library Community Centre is a convenient place to promote your organisation.

If you are looking for information, check out this collection.

Currently overflowing with posters and brochures—there is something for everyone.



Helping Children Walk with Pride

Together we empower children to reach their potential.

RING PULLS



Alone we can do little,
Together we can make a
huge difference to
someone's quality of life.

Drop off at the
Mapleton Bowls Club
Mapleton Library Community Centre



LOCAL VENUES FOR HIRE

KUREELPA DULONG COMMUNITY HALL

Our modern and clean hall is available for hire for meetings, community events and classes.

Contact: Dianne Fitzgerald E: fitzies56@gmail.com

MAPLETON BOWLS CLUB

Cost: for meeting \$50.00. Rent of premises, or large gathering [Trivia] \$100.00

Space: Can accommodate up to 90 persons standing or 80 persons seated.

Other: The use of the Bar and its staff should be requested, while the use of the kitchen and/or its staff is limited and would need discussion.

Contact: The Club Secretary, Martin Lambe

E: mapletonbowlsclub350@gmail.com T: 0428 898734

MAPLETON COMMUNITY HALL and SPORTSGROUND

The historic timber 109 year old hall including grounds. Includes tables, chairs and a basic kitchen. Capacity is 110 persons in the hall.

To enquire email mapletonhall@gmail.com

Two tennis courts managed by The Mapleton Tennis Club are available for Hire.

MAPLETON LIBRARY COMMUNITY CENTRE

Obi Obi Road, Mapleton T: 5445 7011

E: mapletonlibrary@gmail.com

Cost: meeting \$20 per hour; plus use of the kitchen \$30 per hour

Includes: indoor and outdoor spaces, fully carpeted indoor; small kitchen; toilet inside; data projector with screen on the ceiling; 40 chairs, folding tables available. There are also small grass areas, gazebos available, chairs can be used on the grass.

MONTVILLE VILLAGE HALL

Our versatile hall is the perfect venue for everything from weddings to birthday parties to community gatherings. With ample space and beautiful views, you'll be sure to impress your guests.

Contact us today to make a reservation.

<https://www.montvillevillageassociation.org/village-hall-hire>

OBI OBI HALL

Obi Obi Hall is owned by the Obi Obi and Kidaman Creek communities, and operated by members of the Obi Obi and Kidaman Creek District Community Hall Association Inc.

856 Obi Obi Road, Obi Obi 4574; PO Box 276 Mapleton, 4560

Calendar, floor plan and more all on the following web site

<https://obiobihall.blog/obi-obi-hall/obi-obi-hall-hire/>

ST MARY'S HALL MONTVILLE ON THE VILLAGE GREEN

Perfect for workshops, small events, yoga/pilates classes, cosy concerts, art shows, club meetings, baby showers, family events. This space is fully accessible, now air-conditioned (warm in winter and cool in summer), low cost with a free to use kitchenette. Maximum capacity 50 seated, or 12 yoga mats.

For bookings and enquiries:

E: stmaryshallmontville@gmail.com or T: 0475 773810



JPs in the Community

13 QGOV (13 74 68) www.qld.gov.au/jps

This site's volunteers are supported by the Justices of the Peace Branch, the Department of Justice and Mapleton Library Community Centre.

Hours of operation		
Monday	9.00am-11.30am	*Phone 07 5445 7182
Tuesday	By appointment*	
Wednesday	By appointment*	
Thursday	9.00am-11.00am	
Friday	By appointment*	
Saturday	By appointment*	
Sunday	Closed	

If this signing site is closed, visit www.qld.gov.au/finding to locate the nearest signing site currently open.

DELIVERING FOR AUSTRALIA Queensland Government

PROCEDURES FOR RANGE AND HINTERLAND POPUP COMMUNITY NEWS MANAGEMENT

The Range and Hinterland PopUp Community News was launched in 2016. The News has gone through many changes with no one organisation controlling the News—it is truly a community news: for the community by the community. Auspiced by the Mapleton Library Community Centre since 2016 which provides insurance, financial support and much more.

The News offers opportunity to promote events and provide information to all community groups across the Range and the Hinterland
Thank you everyone.

The Range and Hinterland PopUp Community News is edited, published and distributed by volunteers.

There will be no discussion or correspondence on matters pertaining to the Range and Hinterland PopUp Community News.

- All articles for the Range and Hinterland PopUp Community News are to be sent to mapletonqueensland@gmail.com
- If it is important to have an article included in a specific edition, forward article as early as possible. Generally the cut off time for publication is noon Tuesday each week but as this is a fully volunteer publication inclusion is not guaranteed.
- Articles can be emailed at any time. Please include contact name and contact details.
- All articles are to be sent digitally unless otherwise pre-arranged.
- Pop up Community News is published weekly but open to review at any time. A short holiday over Festive Season each year to give the volunteers a well earned holiday.
- Currently Thursday night for distribution is the target time.
- No lost animals, political, religious, personal opinions or missing person notification will be published.
- Negative or derogatory comments will not be published.

Email mapletonqueensland@gmail.com requesting guidelines.

Anyone wishing to receive the Range and Hinterland PopUp Community News, send your email address to mapletonqueensland@gmail.com

Anyone wishing to cease receiving the Range and Hinterland PopUp Community News, send your email to mapletonqueensland@gmail.com

Disclaimer: The Editor and Team assumes no responsibility or liability for the content of this publication.

Keep informed through the web and social media
www.facebook.com/groups/mapletonqueensland/

www.mapletonlibrary.au

Remember, if you wish to receive the

RANGE AND HINTERLAND POPOP COMMUNITY NEWS

Email mapletonqueensland@gmail.com

Current circulation over 4,500





DINNER NIGHT

MAPLETON BOWLS CLUB

FRIDAY 5 June

Orders taken on arrival. Serving begins at 6pm

SPECIALS

Chicken and Leek Pot Pies Chips and Salad
NZ Savoury Scroll (Rissolle) in Gravy with Chips and Salad

DESSERTS

Orange and Almond Cake with fresh cream and ice cream
Apple Crumble with ice cream

Everyone is welcome

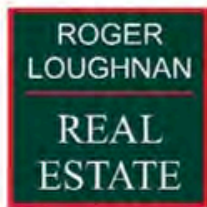
Enjoy a relaxing night away from the kitchen
Becoming so popular - book now to avoid disappointment

<https://mapleton.bowls.com.au/reservations/> This link will take you directly to the booking page of the Mapleton Bowls Club. When a booking is made on the form an email is automatically sent to Kathy Lambe's Dinner Night Email Account and thus will allow for more accurate catering.

To help raise funds to keep this community service going, many of the local businesses have donated vouchers.

Be a winner in the 10 multi-draw raffle

Supporting local businesses that support the community



Mapleton



BELLA VISTA ITALIAN RESTAURANT
MAPLETON

DEDEATC