

# RANGE AND HINTERLAND POPOP COMMUNITY NEWS

Weekly news

A community service since 2016

2 April 2026

Issue 484

## WHAT IS ON THIS WEEKEND?

- \*\* 4 April: Tea & Tarot, The Shambles, Montville.
- \*\* 4 April: Butterfly Wings, 7-12 year olds, Holiday Programme, Maroochy Botanic Garden
- \*\* 5 April: Combined Churches Montville Easter Dawn Services



### SHARE YOUR THOUGHTS MAPLETON COMMUNITY SURVEY PEDESTRIAN SAFETY ON OBI OBI ROAD

I want to better understand community concerns about pedestrian safety in Mapleton to advocate for practical improvements.

Pedestrian safety in Mapleton is in the spotlight, with a new community survey launched to better understand local concerns and potential improvements along Obi Obi Road.

Member for Nicklin Marty Hunt MP is running a community feedback survey to give residents the opportunity to shape future advocacy and ensure decisions reflect the needs of the community.

'This survey is about listening to locals,' Mr Hunt MP said.

'My office has had a number of enquiries about pedestrian safety in Mapleton, and it's important we understand whether this is a broader community concern and what solutions people want to see.'

The survey invites feedback from anyone who lives, works, or spends time in Mapleton. It covers key issues such as pedestrian crossings, traffic flow, and overall safety priorities.

Mr Hunt said community input would play a critical role in building a clear and accurate picture of the situation on the ground.

'Every response helps us better understand how people are using Obi Obi Rd in Mapleton and where improvements may be needed,' he said.

'It's important that we hear from a wide cross-section of the community so I can advocate for what may be needed.'

The survey will remain open over the coming months, giving residents ample opportunity to participate.

**Community members can complete the survey online at**

<https://martyhunt.com.au/stay-updated/community-feedback-survey>

**Marty will be holding his regular Mapleton Conversation Station on Friday, April 17, outside the Mapleton Library Community Centre.**

Facebook page for more information or contact his office at [nicklin@parliament.qld.gov.au](mailto:nicklin@parliament.qld.gov.au).



## CONTENTS

Obi Obi Road Crossing Survey  
Easter Church Services  
New Dance and Fitness Class  
Gently Loved Items  
ANZAC Day Services  
Building the New Chapter  
Flu Season  
Vintage Fashion Fair  
Fun and Games  
Zonta  
Book Fair and Mini Market  
Car Boot Sale, Maleny

Open Studios  
Chenrezig Temple Development  
Montville Reflection Gallery  
QCCC: Local History  
Development Applications  
Fungi  
Bird Species  
Community Services  
Date Claims  
Local Organisations' Posters  
and more



**Good Friday**, 3 April at 8 am – St Mary's Church with Rev'd James Hall

**Easter Sunday**, 5 April at 6 am – the 48th Combined Churches Easter Dawn Service on the deck and gardens of the Montville Village Hall

**Easter Sunday**, 5 April at 8 am – St Mary's Church Holy Communion with Bishop Sarah Plowman



**DECLUTTERING FOR A GOOD CAUSE? WE NEED YOUR TREASURES!**

**We are looking for 'Gently Loved' items for a stall at our upcoming Book Fair and Mini Market, 19th April.**

Every cent raised goes directly to supporting our Centre.

If you have high-quality items sitting in your cupboards waiting for a new home, please consider donating them.

**We're looking for:**

- Treasures & Collectibles
- Kitchen & Homewares
- Electrical goods

Please, only items in very good, giftable, or working condition (no clothing).

**Drop-off details:** All donations should be delivered to Mapleton Library Community Centre on either Saturday 18th April between 9am and 12 noon, or Sunday 19th April at 7am.

Thank you for your generosity



**ANZAC DAY SERVICES AT THE NORTHERN END OF THE BLACKALL RANGE**

**Montville**

5:30am Montville Memorial Gates, followed by tea/coffee and Anzac biscuits

**Mapleton**

9:30am Assemble for the parade at Wilga Street and Flaxton Drive

10am Service in the RSL Park.

All wreaths are welcome

# Building the Next Chapter: Meeting the Needs of the Changing Community

The community information meeting held on the 29th March was very successful - a large crowd, including the Mayor, a past Qld governor [who is a member of our Centre] and the editor of the Sunshine Valley Gazette.

Wonderful to see many volunteers plus community members. Apologies were to hand from many volunteers and community members including Councillor David Law, Marty Hunt MP and Ted O'Brien MP who have been on site in the last three weeks.

The extension is needed for the increased number of workshops, classes, community meetings, plant library, yarn library, one-to-one mental health meetings, art groups, Intergenerational Play group, growing demands for JP Services, examination supervision and so much more.

A few generous donations were received so more red paint for the thermometer, that is now hanging on the front of the building. The projected cost is \$160,000 and when all the grants arrive, we will still be short of around \$32,000 so every dollar will count. The builder is waiting in the wings so ready to build once funds are in the bank.

All donations will be acknowledged. Tax-deductible receipts are available.

For more information: <https://mapletonlibrary.au/community-news/range-and-hinterland-popup-community-news-mapleton-library-community-centre-extension-information-sheet/>

**Would be lovely to record some of the family names of Mapleton.**



Thank you Karen Hardy and Cameron Outridge for the images.

## PROTECT WHAT MATTERS THIS FLU SEASON

Hi everyone,

As Queensland heads into flu season, now is the time to protect yourself, your family, and the community.

Getting your flu vaccination is the best way to reduce your risk of serious illness. Last year, 73% of people hospitalised with the flu had not been vaccinated—a strong reminder of how important it is to stay protected.

### Free Flu Vaccines Available

This year, all Queenslanders aged 6 months and older can receive a free flu vaccination.

There's also a needle-free nasal spray vaccine available for children aged 2 to 5, making it easier for young families.

### Simple Steps to Stay Healthy

- Wash your hands regularly
- Cover coughs and sneezes
- Stay home if you're unwell

### Book Your Vaccination

Getting vaccinated early—ideally in April—helps ensure you're protected before flu season peaks.

Appointments available Mondays, Wednesdays, and Thursdays starting April 8th.

Book your flu vaccination online @

[www.medadvisor.com.au/network/lindnerfamilypharmacy](http://www.medadvisor.com.au/network/lindnerfamilypharmacy) or call 5445 7459 or visit us in-store at 9 Obi Obi Rd, Mapleton and allow our friendly team to assist.

### Your Local Pharmacy

At Lindner Family Pharmacy, our dedicated and professional team is committed to supporting the health and wellbeing of you and your family. We are proud to care for the Range communities and provide trusted, accessible healthcare services throughout the flu season and beyond.

*By Natalie Lindner, your local Pharmacist*



LINDNER FAMILY  
**PHARMACY**

*Caring for the Range*





## MAPLETON'S PARKINSON'S SELF HELP GROUP



Did you know that the Red Tulip is the international symbol for Parkinson's Awareness? The tulip represents hope, perseverance and effort to find a cure for Parkinson's.

Mapleton has a Self Help Support group established to support people who have been diagnosed as living with Parkinson's and their carers and/or support persons.

The next meeting is to be held on **Thursday 9 April 2026 at 1.30pm**. The group's meeting lasts about 2 hours depending on the enthusiasm of those attending!

This sixth meeting will be held at the Mapleton Men's Shed, 52 Delicia Rd, Mapleton. Tea and coffee will be provided. As discussed at the last meeting, Kristine Cook from Parkinsons Queensland will be available to assist us with our discussion.

If you have been diagnosed as living with Parkinson's or are helping someone living with Parkinson's, you are most welcome to attend. Or if you know of someone living with Parkinson's please let them know of this get together.

For further information, please contact Peter 5478 6109.

## Play games, win prizes!

A morning of bingo, trivia, tea & company



Join us for a fun and friendly morning of games and a chance to win a prize!



9.30 - 11.30am  
Friday 10<sup>th</sup> April

\$12 (includes morning tea)

Email, call or drop in to book

Mapleton Library Community Centre



10 Obi Obi Rd, Mapleton

☎ 5445 7011

✉ [mapletonlibrary@gmail.com](mailto:mapletonlibrary@gmail.com)





## ZONTA SCHOLARSHIPS OPEN FOR LOCAL WOMEN IN HIGHER EDUCATION

The Zonta Club of Blackall Range is now accepting applications for its 2026 Tertiary Scholarships. Two scholarships of \$2,000 are available for women in their second year or beyond of higher education, who live in or are originally from the Sunshine Coast hinterland (from Maleny to Kureelpa).

Past recipient Taylor Fishlock is now a busy medical sonographer, based on the Sunshine Coast but also travelling to Emerald and Rockhampton. The Zonta Club of Blackall Range is committed to empowering women through education and particularly women across the region. Club President, Margy Henderson said "Australia has a workforce shortage of sonographers, particularly in regional and remote communities, and we are proud to have supported Taylor in her aspirations in this important profession."

Applications for the Zonta Tertiary Scholarships close 30 April 2026. For more information or an application form, email [Linda McElrea scholarship@zontablackallrange.org.au](mailto:Linda_McElrea_scholarship@zontablackallrange.org.au)

Image above: Taylor Fishlock

**Help Reduce Mum & Bub Mortality**



Every year we pack 600 birthing kits for women in remote regions of the world, who do not have these essentials

**Help us fund this lifesaving activity by buying one or more birthing kits at just \$5 each**

Click on the QR code for our campaign on MyCause

**Thank you for your support!**

Contact: [service@zontablackallrange.org.au](mailto:service@zontablackallrange.org.au) for more information



**Birthing Kit Foundation**  
Australia

**ZONTA**  
CLUB OF  
BLACKALL RANGE INC

**BUILD A BETTER WORLD  
FOR WOMEN AND GIRLS**

# Book Fair & Mini Market

Stop by and grab a bargain!



Mapleton Library Community Centre



100s of books, including  
children's books & puzzles

Plants

Unique gifts

Home baked treats

Gently loved treasures

Pre-loved clothing

Lions BBQ

BOOKS!  
\$10 a bag



8am - 12 noon

Sunday 19<sup>th</sup> April



10 Obi Obi Rd, Mapleton

☎ 5445 7011

✉ [mapletonlibrary@gmail.com](mailto:mapletonlibrary@gmail.com)



# Maleny's Epic Car Boot Sale again!!

Trash or Treasure  
you decide!!!

Sun 19th of April 2026

7.30am - 12pm est.

926 Maleny Montville Rd,  
Balmoral Ridge

2nd hand goods galore, hand  
crafted items, plants, vego  
food & more.



Ph: 0414 455 001



Maleny Seventh Day Adventist Church initiative

**OPEN STUDIOS SUNSHINE COAST  
ARTIST REGISTRATIONS  
REGISTRATIONS CLOSE 17 APRIL**



If you are an artist with a studio, gallery or collective space, we warmly invite you to register and be part of this inspiring event. Come along, celebrate local creativity, and take the first step toward Open Studios 2026.



**BLACKALL RANGE LAND USE PLANNING ASSOCIATION INC.**

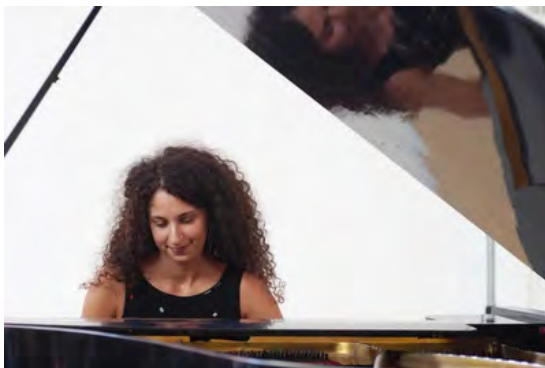
A submission we lodged for the Chenrezig Temple development proposal has been submitted.

You may have seen it in the news.

It s a very large building that can accommodate up to 170 people overnight. We have been contacted by a neighbour and, after looking at the proposal, decided to make a submission as it is generally inconsistent with the objectives for the rural zone and other landscape and ecological matters.

**To find out more:**

<https://mapletonlibrary.au/community-news/range-and-hinterland-popup-community-news-chenzrieg-temple-development-proposal/>



**A BRILLIANT CLASSICAL PIANIST PLAYING IN A PRIVATE AUDITORIUM**

Lucas Parklands has a private auditorium in the rainforest at 126 Narrows Roads Montville, Sunshine Coast.

Ida Pelliccioli is an international renowned pianist.  
Sunday, April 19, 2026

Limited attendance – bookings essential  
Costs range from \$20.00 to \$80.00 front row seats. Parking available.  
For performance and ticketing enquiries, phone 54785667 or 0409 623228.

## MONTVILLE REFLECTION GALLERY

Space to rest and reflect 10 am to 3 pm most days of the year!  
Montville Uniting Church, 152 Main Street, Montville

### **Behold I Stand at the Door and Knock!** **An Exhibition by Kimberley Oehlman**



**On now until 23 May**

Faith sits at the heart of my work, and this collection is shaped by the story of Easter. The gospel is the foundation - not as a fixed narrative, but as a living story expressed through multiple perspectives and mediums.

My name is Kimberley Oehlman, and I have been walking with the Lord since I was fourteen. At that age, I encountered a love that completely transformed my life, like a warm blanket surrounding my very soul. What began as a moment of surrender became a lifelong relationship that continues to shape who I am. I have been forever changed by what He has done for me, and creating has become one of the ways I express that gratitude.

Traditionally working in digital art, I have expanded into acrylic and charcoal for this collection, embracing texture, contrast, and physical mark-making as metaphors for the message itself. To help inspire this work, I asked my church, Maleny Baptist Church, a simple question: "If you had one picture and a paragraph, how would you explain the gospel?" Their generous responses gave me ideas that shaped this year's 2026 series, 'Behold I stand at the door and knock'.

Rather than presenting one fixed interpretation, this collection explores the gospel in layered and accessible ways with mixed media. Each piece reflects on different aspects of love, sacrifice, grief, restoration, and hope. Through this work, I invite viewers to engage with a story that continues to speak across time -one that has profoundly shaped my life.

My hope is that when people walk into the church, they encounter the reality of God's love. As Revelation 3:20 says: "Behold, I stand at the door and knock. If anyone hears my voice and opens the door, I will come in to him and eat with him, and he with me." I hope viewers recognise that He is at the door of every heart, inviting each one to open it to Him.

Please come along enjoy the art, bring someone special with you and maybe they might be touched by God's message and be (like me) forever changed.

**Mapleton**  
**Art and History**  
**Trail**  
Discover our heritage throughout the Mapleton village

1915 - 2015

MAROOCHY STRAIT



## Weekly Activity Update

The Easter Long Weekend is one of the most sought-after times of the year for church camps, and this weekend is no exception. We are hosting a church group across the full weekend, making the most of the extended break with time together, activities, and shared meals in what is always a special time in the calendar.

Next week sees a slightly quieter rhythm onsite as we take the opportunity to catch our breath after a busy start to the year. Our team will be focusing on maintenance and preparation, along with sea kayak training for our instructors and interns - continuing to build skills ahead of upcoming expedition programs. Some of our staff will also be supporting operations at Cobb and Co Nine Mile Campgrounds, which is enjoying a very strong school holiday period with consistent bookings across the break.

## A LOOK BACK – MAPLETON THEN AND NOW

**We recently came across a helicopter photograph from 1984, taken at QCCC Mapleton's first birthday celebration.**

It's a fascinating snapshot of the area - showing the centre already well established, with much of the surrounding residential development yet to take shape, including areas such as Karri Court and Billabong Court, and only early stages of Wandoo and Wilga Courts.

It's remarkable to reflect on how much our village has expanded in the decades since.

**QCCC Mapleton** has been part of the fabric of this community for nearly 50 years - operating as a purpose-built campsite and Outdoor Education centre and continuing in that role today.

Over that time, we've contributed to local employment, supported the regional economy, and welcomed tens of thousands of guests each year. It's a legacy we're proud to continue, as both the centre and the surrounding community grow together.



## RECENT DEVELOPMENT APPLICATIONS IN DIVISIONS 5 AND 10

This is an initiative of Pop Up Community News aimed at providing information and heightened awareness as to developments in our region. Hopefully the information will provide a spring board should anyone wish to dive deeper into any specific application. Using the link: <https://developmenti.sunshinecoast.qld.gov.au/> or entering "development i sunshine coast" into a browser will take you to the Development i home page. Click on "Application Search" and enter the application number. Select "Details" if you want to dive deeper. The supporting documents can typically be downloaded or viewed by selecting "Application Documents" in the right hand section of the screen. In the listings below, typically a brief editorial comment is provided after each application description. These are shown in italics.

### DIVISION 10:

Lodged: 25/03/2026 DA#: OPW26/0113

1-3 Henebery Rd North Burnside / 251326 / Electrical / Rate 3 Streetlighting Reticulation - Ampflo Pty Ltd. *Relates to REC03/0067 major 87 lot subdivision.*

Lodged: 24/03/2026 DA#: POS26/0015

81, 83 & 85 Mineshaft Road Eerwah Vale - Survey Plan SP355670 (3 Lots into 3 Lots) - Murray & Associates. *Administrative. Approving Plans.*

Lodged: 26/03/2026 DA#: OPW26/0114

199 Yandina Bli Bli Rd MAROOCHY RIVER - 199 & 269 Yandina Bli Bli Rd MAROOCHY RIVER - Roadworks, Stormwater & Earthworks - Berries Galore Pty Ltd - Alta Projects - Berries Galore Pty Ltd C/- Alta Projects. *Relates to MCU18/0238 - Large scale horticulture, workers cottage and dwelling.*

### DIVISION 5:

Lodged: 23/03/2026 DA#: MCU26/0056 Impact Assessable

180 Landershute Rd LANDERS SHOOT - Place of Worship - Wat Pah Abhipunno Inc - Murray & Associates (QLD) Pty Ltd. *Impact Assessable. Cold Store area converted to temple, and modifications to dwelling, plus some other out buildings appear to be dismantled.*

Lodged: 23/03/2026 DA#: MCU25/0319.01

664 Glenview Rd GLENVIEW - Minor Change to Approval - Secondary Dwelling - Project BA. *Application to change the secondary dwelling set back from 14.98m as per the approved plans to 8.9m.*

Lodged: 20/03/2026 DA#: OPW26/0110

Cudgerie St MALENY - Electrical and Street Lighting - Robin Russell & Associates Pty Ltd. *Relates to RAL21/0023, 5 lots into 80 lots.*

Lodged: 20/03/2026 DA#: MCU26/0055

132 Lower Landershute Rd LANDERS SHOOT - Secondary Dwelling - CHARMAINE RAWLINGS - Gateway Survey & Planning. *Conversion of existing shed into a 2 level, 1 bed, 1 bath dwelling. Gable roof, no eaves as per standard shed construction.*

Lodged: 27/03/2026 DA#: POS26/0053

47 & 55 Ratcliffe Road DIAMOND VALLEY - Standard Format Plan Lots 2 & 4 on SP349138 - Santoshi Development Consultants. *Administrative. Approving Plans.*

# Grow Australian Plants



***Amanita pyramidifera***

*Amanita pyramidifera* is a basidiomycete mushroom of the genus *Amanita*. The cap is 8 to 21 centimetres in diameter, covered in pyramid type scales which may be white or grey brown. The stem is 5 to 9cm long, white with pyramidal scales.

Found in eastern Australia, the species grows in moist sites associated with eucalyptus forest or rainforest.

Observed recently in the Blackall Range forestry lands.



***Parasola plicatilis***

*Parasola plicatilis*, commonly known as the pleated inkcap, is a small saprotrophic mushroom.

The body resembles a cocktail umbrella. The plicate cap is up to 3.5 centimetres wide. The species has no veil. Though non-poisonous, the species is generally regarded as inedible and thin-fleshed.

It is a decomposer which can be found in grassy areas, alone, scattered or in small groups. The fruiting bodies grow at night after rain, and will self-decompose after spore dispersion is achieved. Otherwise, they are quickly dried up in morning sunlight, or will eventually collapse beneath the weight of their caps.

Also observed recently in the forest. All images: nita

LOCAL

## EASTERN SHRIKE-TIT

### *Falcunculus frontatus*

The Eastern Shrike-tit can be found along the Blackall Range and is one of three races of the Crested Shrike-tit which is endemic to mainland Australia. It is found in eucalypt forests and woodlands, including the margins of rainforests. Although it is a colourful and strikingly patterned bird, it is not easy to see because it spends so much of its life in the highest branches of tall eucalypts.

It is a medium to small but robust bird 15-19 cm long with a large black and white head with a short erectile black crest. The eyes are red-brown and the powerful short black bill is hooked. The back and rump are olive-green and the wings and tail dusky, edged grey. The throat is black and the breast and underparts bright yellow.

The sexes are similar with the male slightly larger than the female. Immatures are slightly smaller in size, browner above and have pale buff underparts.

Eastern Shrike-tits feed in the upper foliage for insects and spiders and sometimes will eat fruit and seeds. They may sometimes be heard tearing at the bark of trees with their powerful bill looking for insects to eat.

Breeding occurs mainly August through to January in a cone-shaped nest usually placed in a vertical fork up to 30 m above ground.

Thank you Eric Anderson

Images:

An inquisitive Male Eastern shrike-tit

A fully exposed Eastern shrike-tit



**JP SERVICE**

Monday mornings from 8:30am to 11:30am without an appointment at the Mapleton Library Community Centre.

Or Thursday mornings 9am to 11am.

Telephone 5445 7182 for a booking in Mapleton at another time.

**COMMUNITY WELCOME PACK FOR NEW RESIDENTS**

Collect your pack from the  
Mapleton Library Community Centre

Borrowing hours: 1pm to 4pm week days  
Saturdays 9am to 12noon

What does the pack include?

Community organisations brochures

Range and Hinterland PopUp Community News - a free weekly news for everyone with information about the events in your neighbourhood

List of community organisations in Mapleton, Flaxton and Montville

Zonta Business Directory

And much more

Also available at the COMMUNITY STALL at the monthly Mapleton Country Market.

**RURAL FIRE BRIGADES**

**Call 000 for emergencies**

**Kureelpa**

First Officer 0429 068090

Fire warden Kureelpa 0477 048616

Fire Warden Dulong 0407 412539

E: kureelparfb@gmail.com

Address: Bradford Rd, Kureelpa

Post: Kureelpa RFB P.O. Box 4931, SCMC, 4560

Monthly Meetings: 7.30pm on the first Thursday

**Mapleton**

First Officer (all operational matters): 0428 137927

Fire Warden (fire permits, safety checks): 0499 778806

Secretary (new members, administration): 0499 883019

W: <https://www.facebook.com/mapletonruralfirebrigade/>

E: MapletonRFB@gmail.com

Address: 37 Obi Obi Road, Mapleton 4560

Post: PO Box 366, Mapleton 4560

Monthly Training: 5:30pm on the 2nd Tuesday

Monthly Meeting: 5:30pm on the 3rd Tuesday

**Montville**

Call Mark Roderick, First Officer on 0409 480058 for queries and training information

Call John Watson, Fire Warden on 0477 712175 for permits

The team meets every second Monday at 7.00pm and the final Wednesday of each month at 7.00pm

## **MONTVILLE UNITING CHURCH**

Services are held each Sunday at 8.15am when a combined service is held at Maleny Uniting Church at 9.45pm. All welcome.

Minister: Rev Nathan Barton  
E: minister@ourcommonlife.org.au  
M: 0429 632527

The church is open as a Reflection Gallery every day from at least 10am till 3pm.

## **ST. MARY'S ANGLICAN CHURCH**

On the green, Montville  
Sunday Eucharist at 8am  
Wednesday Meditation with Maureen 9am  
Baptisms, funerals and wedding enquiries welcome  
Parish Office: 5499 9130  
E: stmarysmontville@gmail.com

### **Date Claims**

**2-7 April** Easter Art Exhibition, St Mary's Hall, Montville.

**3-6 April** Easter

**4 April** Tea and Tarot, 10am-4pm, The Shambles, Montville.

**8 April** Basket Weaving, 9am-1pm, Mapleton Library Community Centre.

**10 April** Fun and Games, 9:30am, Mapleton Library Community Centre.

**10 April** Friday Night Dinner, 6pm, Mapleton Bowls Club.

**17 April** Marty Hunt MP, Mapleton Conversation Station, Mapleton Library Community Centre.

**17-26 April** Tiny Beautiful Things, Maleny Players.

**19 April** Book Fair and Mini Market, Mapleton Library Community Centre.

**24 April** Friday Night Dinner, 6pm, Mapleton Bowls Club.

**25 April** ANZAC Day

**26 April** Community Logo Night, 5pm, Montville Hall.

**2-4 May** Sunshine Coast Hinterland Writers Festival.

**4 May** Memior Writing, 3pm, Rosetta Books, Maleny.

**24 May** Family Fun Day 9am-2pm Kenilworth Showground.

**26 May** Family Fun Day, 9am-2pm, Kenilworth Arts Council.

**Disclaimer: The Editor and Team assume no responsibility or liability for the content of this publication.**






  
*Welcome*
  

  
*Tea & Tarot*
  
 Easter Saturday,  
 4 April 2026  
 10.00am - 4.00pm

**THE SHAMBLES,  
 85 WESTERN AVENUE,  
 MONTVILLE**

**\$5pp Entry  
 \$10pp Tea & Tarot  
 CASH ONLY**



**Holiday Programme: Butterfly Wings**  
**Saturday 4 April 2026, 10:30am - 12:30 pm**  
**Palm Creek Rd, Tanawha**

Butterfly Wings is a creative, nature craft session where children will design and make their own butterfly wings using fleece, fibre, paper and pegs. Inspired by the colours and patterns of real butterflies, children will create beautiful wings to wear, flutter and play in as they explore the magic of transformation. All materials provided.

**Facilitator:** Carly Garner, Natureweavers

**Suitable ages:** 7 - 12 years old

**Location:** Kurrajong Shelter

**Image above:** Four-barred swallowtail, by Phil Bender

Proudly supported by Sunshine Coast Council's Environmental Visitor Centres.

**Bookings:**

<https://events.sunshinecoast.qld.gov.au/event/34795320-a/holiday-program-butterfly-wings>

REPEATS

# BASKET WEAVING WORKSHOP

weaving along the middle path

**REPEAT BY POPULAR DEMAND**



**Wednesday  
8 April  
9am - 1pm**

**Mapleton Library  
Community  
Centre  
  
Obi Obi Road**

Limited space available

**BOOK NOW**  
T: 5445 7011  
E: [mapletonlibrary@gmail.com](mailto:mapletonlibrary@gmail.com)



## **Are you a senior looking for unique travel and hosting experiences? Have you heard of Friendship Force?**

Friendship Force isn't just about ticking off tourist spots. When we travel, we see places through a local's eyes. Whether in Australia or overseas, we are home-hosted with members who act as local guides, transporting us to iconic, popular and heritage-listed places.

If you love travel, would enjoy hosting international members, and love to be a tourist in your own town, join us for a one-hour information session at the Mudjimba Community Hall on Wednesday, 29th April at 2.30pm. For more information, contact Jenny on 0448 866141 or [info@ffsunshinecoast.org.au](mailto:info@ffsunshinecoast.org.au).



**Intro to Watercolours**  
**Tips and techniques for beginners**

**Date:** Tuesday, 21 April  
**Time:** 2:00pm – 4:00pm  
**Location:** Verandah of the  
 Mapleton Library Community Centre

Join us for a fun and relaxed **beginner-friendly drawing class** where you'll learn Watercolour step by step. No experience needed.

**All equipment and supplies are provided**, so all you need to do is show up and enjoy. Notes will be provided.

Perfect for anyone wanting to explore new techniques, improve their sketching skills, or simply try something creative!

**Reserve your spot today** — spaces are limited

**Cost:** \$20

**Email:** [mapletonlibrary@gmail.com](mailto:mapletonlibrary@gmail.com)



**David Shanhun & Mark Moroney @ Kureelpa Hall**  
**Sunday, 24 May, 7pm – 8:45pm AEST**  
**Kureelpa Dulong Community Hall**

Experience an unforgettable evening as these two magnetic performers weave honeyed vocals, masterful guitar work, and deeply felt stories into song.

For the first time since celebrated New Zealand tours, acclaimed guitarists and singer-songwriters David Shanhun and Mark Moroney are joining forces again for a rare series of intimate shows in Australia.

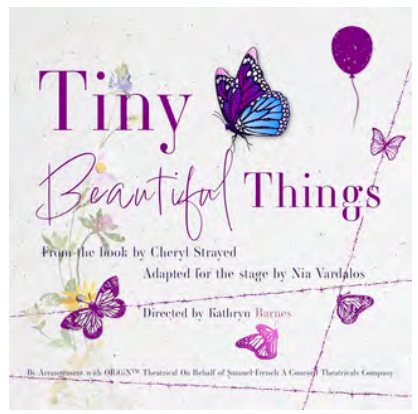
Cheaper \$15 tickets for under 18s

Doors open from 6:30pm / show starts at 7pm (8:45pm finish).  
 Tickets are VERY limited - don't miss out!

<https://events.humanitix.com/david-shanhun-and-mark-moroney-kureelpa-hall>

**Evening shows: 17, 22, 24 & 25 April at 7:00pm**  
**Matinees: 18, 19 & 26 April at 2:00pm**

Tickets \$25.00, Concessions \$20.00  
<https://www.trybooking.com/DJGJH> Cash Sales at Rosetta Books, Maleny.

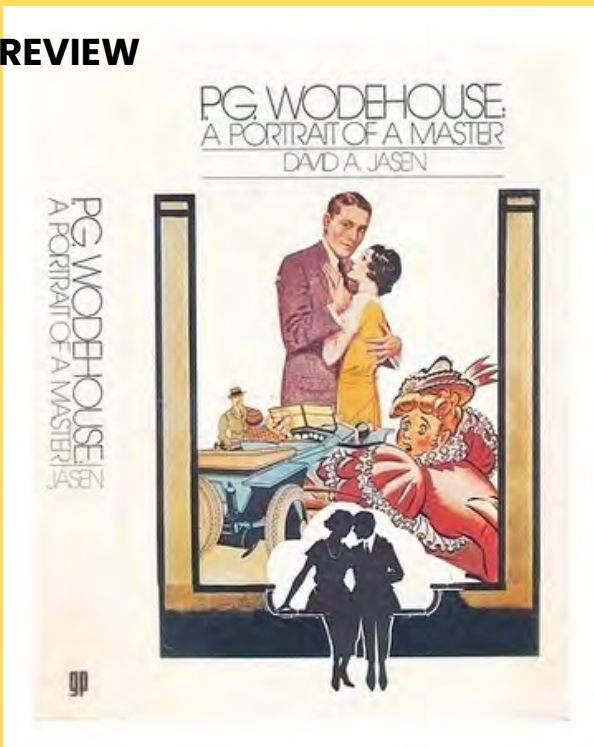


Rating 16+ contains strong language, adult and challenging themes including trauma.

**RAW LOCAL HONEY**  
**\$15**  
**Mapleton Library Community Centre**



**BOOK REVIEW**

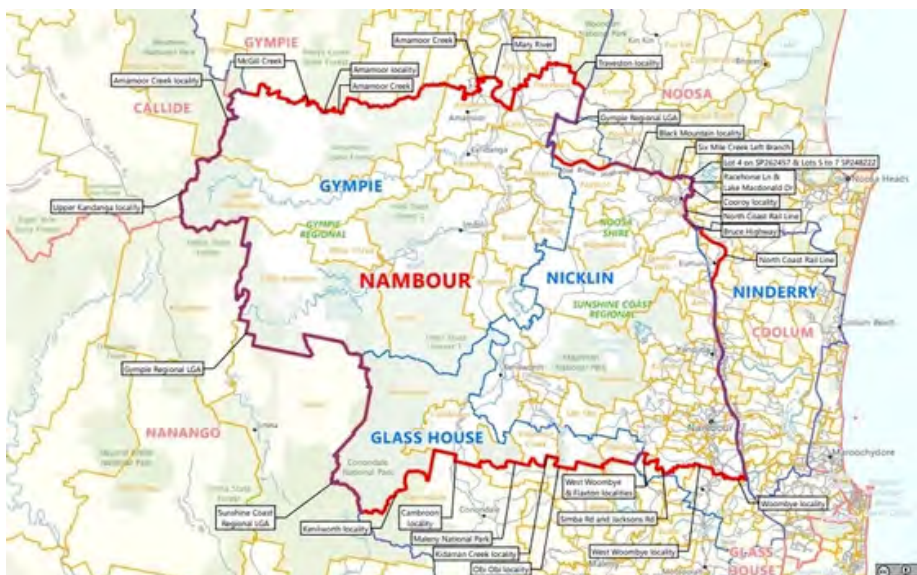


**P.G. WODEHOUSE: A PORTRAIT OF A MASTER**  
**DAVID A. JASEN**

For more than a century, readers around the world would have been delighted by the novels, short stories, plays, lyrics and essays of Pelham Grenville Wodehouse, best known as the creator of the dimwitted English gentleman Bertie Wooster and his indispensable valet, Jeeves. The definitive authorised biography of one of the greatest literary humourists of all time, first published in 1974 and now appearing in a revised, updated edition.

Comprehensively illustrated, with many unique family portraits, this is the first book to trace Wodehouse's career from his first magazine contribution in 1901 through his show-business years with Jerome Kern and George Gershwin to his one hundred books that have brought so much pleasure to readers over the years.

This text is available at the Mapleton Library Community Centre.



**Sunshine Coast electorates are in line for some significant changes for the next state election.**

The Queensland Redistribution Commission has revealed a proposed redistribution, including alterations to names and boundaries, for 2028.

The QRC stated that Nicklin and Ninderry would be renamed Nambour and Coolum respectively, due to the “large and recognisable” towns in those areas.

The proposal also outlines why changes should be made to boundaries and provides further details on the areas.

“The Sunshine Coast is a region that has grown significantly since 2017, with the district of Caloundra being significantly above the state average enrolment (47,391, which is almost 18 per cent above 40,188).”

“The Commission decided to transfer the portions of Caloundra, situated west of the Bruce Highway, to the revised Glass House district, and the southern locality of Coochin Creek to Pumicestone, resulting in a more compact district.

“The Commission notes significant development is ongoing in this district, and Caloundra is projected to (significantly) exceed the average state enrolment by 2032.

“The districts of Glass House and Nambour (formerly Nicklin) have shifted north to accommodate the new district of Caboolture in the Moreton Bay region and absorbed some enrolment pressure from the over-quota Caloundra and Gympie as part of this change.

“The Commission considered including Cooroy in Noosa (electorate), but ultimately decided it should remain with Nambour (formerly Nicklin) to better balance the number of electors in both districts.

“The town of Eumundi has also been transferred from Coolum (formerly Ninderry) to Nambour to balance current and projected population in these districts.” There would be eight districts in the Sunshine Coast area: Glass House, Maroochydore, Caloundra, Coolum (formerly Ninderry), Kawana, Nambour, Blackall Range (formerly Nicklin), Buderim, and Noosa.

Notable changes proposed for towns and suburbs include: Beerwah and Landsborough becoming a part of Glass House instead of Caloundra; a large area around Woodford being within Caboolture instead of Glass House, large hinterland areas being within Nambour instead of Gympie and Glass House, and Coochin Creek and surrounds being in Pumicestone instead of Caloundra. Some parts of Mountain Creek would be within Maroochydore instead of Buderim.

There is more information:

<https://www.sunshinecoastnews.com.au/2026/03/19/coast-electorates-in-line-to-be-renamed-and-reshaped/>

## MAPLETON STATE SCHOOL – HEADTEACHERS’ RESIDENCE

The Mapleton School opened on land in Rosser’s selection with 15 children in attendance under the watchful eye of their teacher, Lizzie Fitzgerald.

The first school building and its furniture were made and paid for by the community.

Mr Francis Watt was the first male and married teacher with a young family who taught from 1912 to 1926.

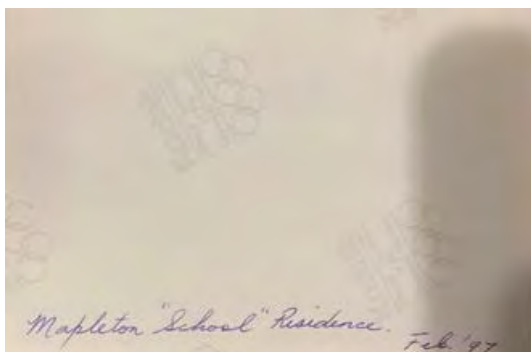
As Mr Watt wanted to remain in the area until all his children were grown, he advised the Mapleton School Committee, who in turn applied to the Department of Public Instruction (Department of Education) to have a school residence built. The family took up residence on April 30, 1917.

Mr. Shields was head teacher during World War II for two years.

During the 1950’s, Mr. Alexander, Mr Martin, and Mr. Wagner were all head teachers and resided in the Head Teacher’s cottage.

With changes to the Department’s housing in the 1990’s and the residence being vacant for several years, the community requested that Maroochy Shire Council move the building from Flaxton Drive to its current site at 17 Obi Obi Road. The relocation took place in 1997, with the building becoming known as ‘The Old School House’.

The Old School House is a part of Mapleton’s heritage and has been preserved for the community by Sunshine Coast Council. Since 1987, the Mapleton and District Community Association has leased the building from the Maroochy Shire and Sunshine Coast Regional Councils. During this time, it has been a meeting venue, housed the art and craft gallery ‘Enigmas’, acted as the Op Shop ‘Katie Rose’ for the Sunshine Coast Hospice and lately as the ‘Op Shop’ for RangeCare.



Thank you, Lindsey Wareham, and all other residents who have contributed to the record.

**To Everyone: if you have additional information and/or images, please forward to: [mapletonqueensland@gmail.com](mailto:mapletonqueensland@gmail.com) Thank you**

## Recent Development Applications in Divisions 5 and 10

This is an initiative of Pop Up Community News aimed at providing information and heightened awareness as to developments in our region. Hopefully the information will provide a spring board should anyone wish to dive deeper into any specific application. Using the link: <https://developmenti.sunshinecoast.qld.gov.au/> or entering "development i sunshine coast" into a browser will take you to the Development i home page. Click on "Application Search" and enter the application number. Select "Details" if you want to dive deeper. The supporting documents can typically be downloaded or viewed by selecting "Application Documents" in the right hand section of the screen. In the listings below, typically a brief editorial comment is provided after each application description. These are shown in italics.

### **DIVISION 10:**

Lodged: 17/03/2026 DA# " OPW26/0099

64 Burnside Rd PERWILLOWEN - Earthworks - Coordinated Development Solutions. Application to create a tennis court on a large lot. *Application processing delayed because Council is expecting a Geotech Assessment as the land is subject to a medium landslide hazard overlay.*

Lodged: 16/03/2026 DA#: REC05/0086.07

10 Warner Cres YANDINA - Generally in Accordance - Major Urban Subdivision x 141 lots - Building Approvals United Qld. *No supporting documents published.*

Lodged: 18/03/2026 DA#: RAL26/0021

90A Petrie Creek Rd ROSEMOUNT - 1 Lot into 4 Lots - Eagle Surveys Pty Ltd. *Creation of 4 lots serviced by an easement, odd sizes: 600m2, 1864m2, 1091m2 and 1091m2.*

Lodged: 18/03/2026 DA#: OPW26/0104

6 Ivory Ct BURNSIDE - Non-Standard Vehicle Crossover - Ausmar Homes - Suncoast Building Approvals. *Request for a non-standard driveway and cross over because of the slope of the land.*

Lodged: 13/03/2026 DA#: POS26/0040

48 Central Park Dr YANDINA - Survey Plan SP345051 (2 Lots) - Bennett & Bennett. *Administrative, Approving Plans.*

Lodged: 19/03/2026 DA#: OPW26/0107

8 Leigha Pl KUREELPA - Vegetation Clearing - Douglas Tilley. Removal of one tree that poses risk to people and structures. *(Gum tree dropping branches.)*

Lodged: 17/03/2026 DA#: OPW26/0105

41 Glenbrook Drive NAMBOUR - Electrical Reticulation - Millwood Rise Developments Pty Ltd - Electro Technical Consultants. *Relates to RAL24/0075, 1 lot into 11.*

Lodged: 18/03/2026 DA#: POS26/0048

112 Cash Road EUMUNDI - Reconfiguration of 1 Lot into 2 Lots - SP355676 - Lots 1 & 2 - Murray & Associates. *Administrative, Approving Plans.*

### **DIVISION 5:**

Lodged: 17/03/2026 DA#: REC14/0159.04

34 Citron Pl PALMWOODS - Minor Change to Approval - Reconfiguring of a Lot into 117 Lots - Sofie Wilkinson & Joel Turnbull. *Request to reduce the width of the Council Easement at the rear of the lot from 5m to 2m in width.*

Lodged: 16/03/2026 DA#: MCU26/0051

70 Mooloolah Meadows Dr MOOLOOLAH VALLEY - Dwelling House & Secondary Dwelling - Timothy David Robinson & Phoebe Bernice Rutherford - Plan. *No supporting documents published at time of writing.*

Lodged: 16/03/2026 DA#: RAL26/0020

PRAS - 2 Bagnall Rd & 62 Carruthers Rd WEST WOOMBIE - 2 Lots into 2 Lots - David Kruger - URBN Town Planning Pty Ltd. *Application to transfer 2.288ha from a lot currently 4.69ha to a lot currently 3.405ha.*

**LOCAL ARTISTS ARE NEEDED  
TO DISPLAY THEIR ARTWORKS**

**For a period of one month**

**20% commission on sales**

**MAPLETON LIBRARY COMMUNITY CENTRE**

**E: [mapletonlibrary@gmail.com](mailto:mapletonlibrary@gmail.com)**

**ALMOST ALL THE PLANTS HAVE SOLD –  
WE NEED MORE PLEASE**

**The Plant Library at the Mapleton Library Community  
Centre .**

**If you have any unwanted potted plants, please donate.**

**Every dollar raised helps to ensure all the services offered  
by the Centre will continue.**

# JPs in the Community

 13 QGOV (13 74 68)  [www.qld.gov.au/jps](http://www.qld.gov.au/jps)

This site's volunteers are supported by the Justices of the Peace Branch, the Department of Justice and Mapleton Library Community Centre.

## Hours of operation

Monday	9.00am–11.30am	*Phone 07 5445 7182
Tuesday	By appointment*	
Wednesday	By appointment*	
Thursday	9.00am–11.00am	
Friday	By appointment*	
Saturday	By appointment*	
Sunday	Closed	

If this signing site is closed, visit [www.qld.gov.au/findjp](http://www.qld.gov.au/findjp) to locate the nearest signing site currently open.

## IT'S THAT TIME OF THE MONTH, WHEN COMMUNITY ORGANISATIONS' PROMOTIONAL POSTERS ARE INCLUDED.

If your organisation has a poster, please forward it for inclusion in the next edition.



**Mapleton Bowls Club**

Enjoy relaxed country style hospitality  
Social and competitive bowls  
Darts meet Wed and Fri afternoons  
Great value meals every alternate Friday 6pm  
Bar open Wed and Fridays

*best green on the Sunshine Coast  
everyone welcome*

www.mapleton.bowls.com.au  
ph: 07 5445 7913  
mapletonbowlsclub350@gmail.com  
5 Post Office Road, Mapleton, Queensland,  
4560.



### Not-for-profit Community Gym

We welcome all ages (15+) & fitness levels

We will help you achieve your health and fitness goals whether it is to increase fitness, stability, strength, mobility or mental health & wellbeing

- individual programs
- classes – senior strength & stability, circuit, boxing, yoga, tai chi
- qualified instructors
- flexible membership
- no lock-in contracts
- friendly & social



Contact: Paul 0439 670 629

Tina 0493 101 730

Or drop into the gym – we are located behind the Mapleton Bowls Club overlooking the Lilyponds (5 Post Office Rd, Mapleton) [www.rangecommunitygym.com.au](http://www.rangecommunitygym.com.au)

### MAPLETON LIBRARY COMMUNITY CENTRE

**Owned and staffed by volunteers**

**DGR status, so all donations are tax-deductible**



Over 11,000 books, magazines and DVDs for borrowing [children, young adults, large print].

JP services, laminating, internet, printing, other computer services, and monthly bingo.

Workshops, events, public notice board, and community brochures.  
Recycling, domestic violence goods and donated food collections.

A quiet place to relax and meet friends.

E: [mapletonlibrary@gmail.com](mailto:mapletonlibrary@gmail.com)

W: [mapletonlibrary.au](http://mapletonlibrary.au)



## MAPLETON CRAFT GROUP

Meets every Wednesday 9am to 12noon at the Mapleton Bowls Club. Like a raft of creativity beside the Lilyponds; we gather to inspire and motivate our members for 30 years.

Your initial visit is free of charge. Come and enjoy the creative atmosphere and share a [free] morning tea with our members. Explore the variety of talent that can enrich you life. We look forward to seeing you soon!



Zonta International is an international service organization with the mission of advancing the status of women.

If you are interested in becoming a member of the Zonta Club here on the Range, please contact the President Margy Henderson. E.

[president@zontablackallrange.org.au](mailto:president@zontablackallrange.org.au)

Promotional space in 2024 Business Directory is now available

## MAPLETON ART

A small group of artists meet every Thursday morning from 9am to 11am.

They investigate techniques and materials for continued professional artistic development.

If you think this group might be right for you, drop in one Thursday at the Mapleton Library Community Centre or Email: [mapletonlibrary@gmail.com](mailto:mapletonlibrary@gmail.com)

Currently working on the 2027 calendar to raise money for more Art in Public Spaces.



**Kureelpa Hall—1st Saturday of every month at 8am.**

**Mapleton 3rd Wednesday every month at 9am [in the grounds of the RangeCare Op Shop].**



## PROBUS CLUB OF NORTH BLACKALL RANGE INC

Venue: Mapleton Bowls Club, 5 Post Office Road, Mapleton

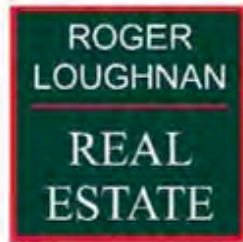
The Probus Club of North Blackall Range Inc meets on the second Friday of the month from February to November at the Mapleton Bowls Club for fun, fellowship and friendship between 10am and 12noon.

We have interesting guest speakers, fun outings and several special interest groups.

Annual Membership is \$65 which covers meetings for the year, Public Liability Insurance, hire of venue and morning teas. There is a once off joining fee for new members of \$25.

Interested persons are welcome to come to our meeting free for the first visit to see if it suits them.

### Supporting local businesses that support the community



Mapleton



ROSETTA BOOKS



## RECYCLING IN MAPLETON

**SPECTACLES** are collected by Lions from the Mapleton Library Community Centre.

**CANS and BOTTLES** Containers for Change  
Mapleton Bowls Club - There is a convenient collection point which is a wheelie bin placed near the entrance. Bins can be distinguished from others by its bright blue lid.

Mapleton State School P & C. All your donations would be gratefully received and will go towards resources for our school and students.

Mapleton Men's Shed These may be left in the bins in front of the storage shed in Mapleton Forest Drive.

**MOBILE TELEPHONES** Roger Loughnan Real Estate, corner Post Office Road and Obi Obi Road Mapleton, is a registered drop off location for people to donate their old working phones with chargers etc. The staff will deliver these to DVSafe Phone.

Also place in any Lion's spectacle box at the Mapleton Bowls Club and the Mapleton Library Community Centre.

**BLISTER PACKS** Mapleton Library Community Centre verandah

**USED PENS** Mapleton Library Community Centre verandah

### **RING PULLS from aluminium cans**

Lions will forward these for a mobility device for children. Container on the Library Community Centre verandah



**YARN LIBRARY** Sewing, knitting and embroidery items to swap—containers inside the Library Community Centre

**PLANTS** There are stands outside the Mapleton Library Community Centre where you can leave plants for someone else who might like them.



## **PROCEDURES FOR RANGE AND HINTERLAND POPUP COMMUNITY NEWS MANAGEMENT**

The Range and Hinterland PopUp Community News was launched in 2016. The News has gone through many changes with no one organisation controlling the News—it is truly a community news: for the community by the community. Auspiced by the Mapleton Library Community Centre since 2016 which provides insurance, financial support and much more.

The News offers opportunity to promote events and provide information to all community groups across the Range and the Hinterland  
Thank you everyone.

The Range and Hinterland PopUp Community News is edited, published and distributed by volunteers.

There will be no discussion or correspondence on matters pertaining to the Range and Hinterland PopUp Community News.

- All articles for the Range and Hinterland PopUp Community News are to be sent to [mapletonqueensland@gmail.com](mailto:mapletonqueensland@gmail.com)
- If it is important to have an article included in a specific edition, forward article as early as possible. Generally the cut off time for publication is noon Tuesday each week but as this is a fully volunteer publication inclusion is not guaranteed.
- Articles can be emailed at any time. Please include contact name and contact details.
- All articles are to be sent digitally unless otherwise pre-arranged.
- Pop up Community News is published weekly but open to review at any time. A short holiday over Festive Season each year to give the volunteers a well earned holiday.
  - Currently Thursday night for distribution is the target time.
- No lost animals, political, religious, personal opinions or missing person notification will be published.
- Negative or derogatory comments will not be published.

Email [mapletonqueensland@gmail.com](mailto:mapletonqueensland@gmail.com) requesting guidelines.

Anyone wishing to receive the Range and Hinterland PopUp Community News, send your email address to [mapletonqueensland@gmail.com](mailto:mapletonqueensland@gmail.com)

Anyone wishing to cease receiving the Range and Hinterland PopUp Community News, send your email to [mapletonqueensland@gmail.com](mailto:mapletonqueensland@gmail.com)

Disclaimer: The Editor and Team assumes no responsibility or liability for the content of this publication.

Keep informed through the web and social media  
[www.facebook.com/groups/mapletonqueensland/](http://www.facebook.com/groups/mapletonqueensland/)

[www.mapletonlibrary.au](http://www.mapletonlibrary.au)

Remember, if you wish to receive the

### **RANGE AND HINTERLAND POPUP COMMUNITY NEWS**

Email [mapletonqueensland@gmail.com](mailto:mapletonqueensland@gmail.com)

Current circulation over 4,500

