



RANGE AND HINTERLAND POPOP COMMUNITY NEWS

Weekly news

A community service since 2016

5 February 2026

Issue 476

WHAT IS ON THIS WEEKEND?

- ** 6 February: Pit your Wits against the Odds, 9:30am; Mapleton Library Community Centre
- ** 6 February: Murder Mystery Night, 5:30pm, Maleny RSL
- ** 7 February: The Boor, 7pm, Maleny Community Centre



THANK YOU

TO THE WONDERFUL MAPLETON COMMUNITY

Sometimes there are not enough words to express a truly thankful heart and to say thank you to everyone for the thoughtful and wonderful cards, flowers, gifts and good wishes we have received as we prepare to embark on the next stage of our journey.


We take with us so many fond and cherished memories of our time spent in our little Post Office in a very special community which has been a pleasure and a privilege to serve.

Although the moment is tinged with sadness as we say goodbye, Mapleton will always hold a very special happy place in our hearts.

ONCE AGAIN

A HEARTFELT THANK YOU

Elizabeth, David, Yvonne & Family



CONTENTS

Thank you from Elizabeth
Australia Post
Valentine's at Fishtales
Murder Mystery Night
Pit yourself against the Odds
The Boor
Local History
Baroon History Group
Lind Lane Theatre
Riverbend Ensemble

Drawing Class
Writers' Festival
Oriana Choir
QCCC
Development Applications
Fauna and Flora
Community Services
Date Claims
Local Organisations' Posters
and more



3 February 2026

Dear Valued PO Box Customer,

Update on changes to postal services in Mapleton

As previously advised, Mapleton LPO will cease operating from 11 Post Office Road, MAPLETON, QLD, 4560 at 5pm on Monday 9 February 2026.

We are pleased to inform you that from 9am Tuesday 10 February 2026 Mapleton LPO will reopen under new management from Mapleton IGA.

All parcels and mail (including PO Box mail) will be transferred to the new location (approximately 500m away) and be available for collection over the counter.

New Licensed Post Office	Address	Opening Hours
Mapleton (LPO)	Mapleton IGA 28/32 Flaxton Drive, Mapleton	Counter services: Mon-Fri 9am-5pm Sat – 9am-12pm Collecting mail: Mon-Fri 7am-6pm Sat – 9am – 12pm

Please note:

- There will be temporary disruption to PO Box access while new PO Boxes are installed at the new location in the coming months.
- There will be no change to your PO Box number or address, and you will be supplied with a new PO Box key in the coming months.
- In the meantime, all PO Box mail and parcels can be collected over the counter at the new Mapleton LPO.

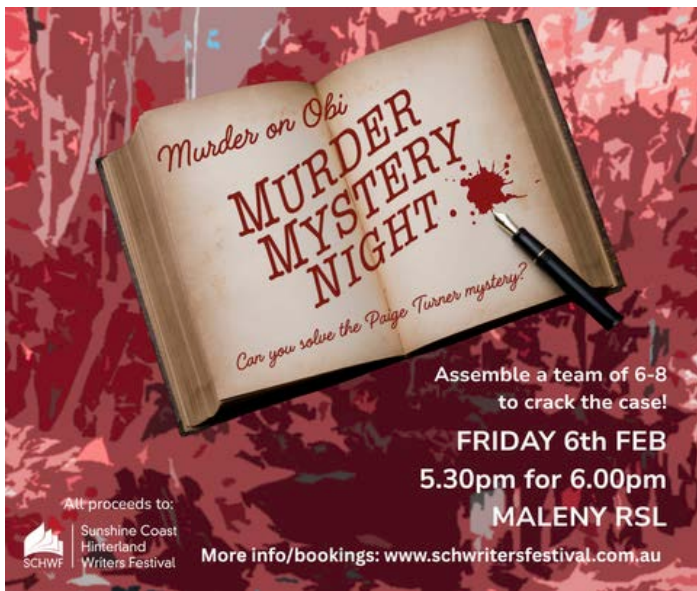
Customers will be required to **show personal ID** when collecting mail and parcels from **Mapleton LPO**.

We apologise for any inconvenience and look forward to welcoming you at the new location.

If you have any queries, please call our Customer Contact Centre on 13 76 78.

Yours sincerely,





**MAPLETON LIBRARY
COMMUNITY CENTRE**

*Pit your wits
against the odds*

Friday 6th February
9:30 - 11:30am
\$12 pp
includes delicious morning tea

Trivia

Fun & games

Bingo





THE BOOR
A comedic opera by Dominick Argento



TICKETS AND INFO



7pm, 7th of February
Maleny Community Centre

THIS BOOR MAY HAVE JUST MET HIS MATCH, IN MORE WAYS THAN ONE...

 **SPRINGBOARD
OPERA**

 **4MBS Classic FM**
103.7



This plaque is situated in the garden on the Obi Obi Road side of the property.

MAPLETON PUBLIC HOUSE

The Mapleton Public House, originally opened in 1910 as the Ocean View Hotel, is a historic Queensland venue in the Sunshine Coast hinterland known for its panoramic coastal views. It was built for pioneer William Rosser, survived a fire, and was recently revitalised as a paddock-to-plate venue by new owners.

Key Historical Highlights

Establishment (1909–1910): The hotel was built in 1909 and officially opened on 5th January 1910 to serve the growing Mapleton community and tourists, according to the Sunshine Coast Council. Arthur Johnson was the first licensee.

Early Years: It became a popular tourist destination for its views and cool mountain air. The area was also served by a tramway to Nambour that opened in 1915.

The Ocean View Hotel became a popular tourist destination until the Great Depression of the 1930s.

Renaming (1979): The establishment was renamed the Mapleton Hotel Motel in 1979 and later became known as the Mapleton Tavern. The tavern was a popular place to enjoy a meal and take in the beautiful view over the Sunshine Coast.

2022–Present: Purchased by Ben Johnston and Jessica Huddart, the venue was renamed Mapleton Public House and transformed into a focus on sustainable, farm-to-fork dining. The new owners removed poker machines to create a more family-friendly, community-focused atmosphere.

If you have additional information and/or any historical images, please forward them to mapletonqueensland@gmail.com

Mapleton Art and History Trail

Discover our hertiage
throughout the
Mapleton village



The BAROON HISTORY GROUP

Blackall Range Ethnohistory.

Talk by Dr Ray Kerkhove.

The Green Room, Mapleton Public House

Monday 23 February 2026,

5:00pm for 5:30pm – 7:00pm.

Fee \$5.00

A light snack will be served.

Please come early to purchase drinks.

Ray's books will be available for sale.

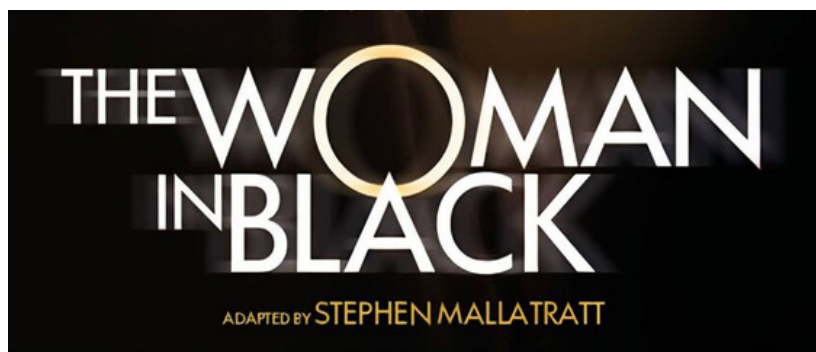
All welcome.

Please RSVP: info@talkingcountrybuildingbridges.com



Ray Kerkhove is a professional ethnohistorian and writer. By blending historical methods with anthropological insights and using diverse sources he specialises in reconstructing Indigenous lifeways, (economies, material culture, plant uses) and sites, including conflict and resistance (Frontier War) sites and Frontier War tactics. He is an expert on the Blackall Range Indigenous history. He has written dozens of books and many heritage reports. In conjunction with Indigenous knowledge his work is regularly used to help inform cultural revival projects, for example the 'Bunya Project'.

Between 2020 and 2021 Ray was Historian- in -Residence with the Noosa Council, and 2021- 2022 Historian-in -Residence for Sunshine Coast Council. In 2017- 2019 he was a Visiting Research Fellow at Griffith University. He is currently a Research Fellow at the University of Queensland's Social Sciences School (Archeology).



THE WOMAN IN BLACK

Friday 13 – 21 February

7:30pm – 9:45pm

Nambour Lind Lane Theatre

16 Mitchell St, Nambour

A lawyer obsessed with a curse he believes has been cast over him engages a young actor to help tell his terrifying story. Together, they bring to life the events that befell him years earlier, when he was sent to settle the estate of a recently deceased widow at the isolated Eel Marsh House.

As the tale unfolds amid swirling fog and echoing marshes, the line between reality and imagination blurs, and the horrifying presence of The Woman in Black makes itself known.

A spine-tingling theatrical ghost story, The Woman in Black is a masterclass in suspense, atmosphere, and the power of storytelling.
12+ rating

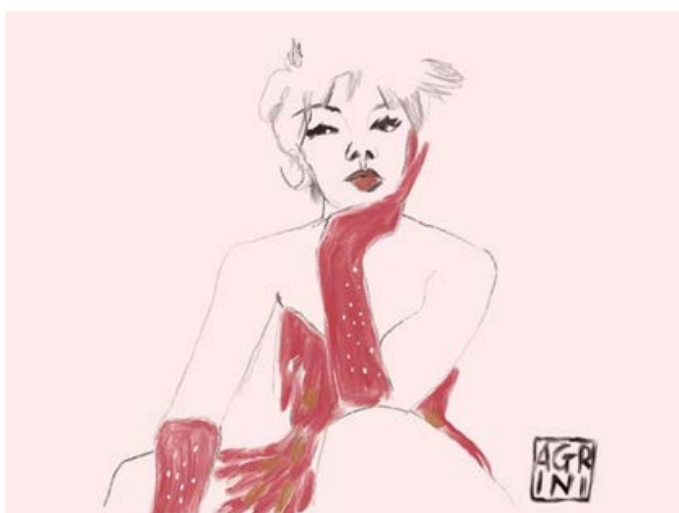
Cost: \$20.00 – \$27.00



In December 2025, we had the pleasure of bringing the 'Contrasts' program to our audience at St. David's, Chelmer. This diverse group of works by Telemann, Charles Gounod, Rachel Merton, Philip Glass and Rebecca Clarke was very warmly received and we loved playing it! So much so that the first two concerts of 2026 will be reprises of this program, with the exception of the Christmas-centric Clarke work.

We have played in places other than Brisbane before, and it has always been our intention to try and take chamber music to audiences further afield. We are looking forward to meeting new people and enlivening the heritage-listed venues we have chosen.

CONTRASTS 2 – SUNDAY 22 FEBRUARY 2026, 2pm
St Mary's Anglican Church, 135 Main St, Montville
<https://www.riverbendensemble.org/>



**LIFE DRAWING CLASS
MONTVILLE VILLAGE HALL
TUESDAY 10 MARCH, 7.00–9.30PM**

This is a life drawing class with a difference – our models are clothed. Not completely of course. But if you like the idea of Burlesque styled clothing then you will enjoy this drawing opportunity.

There will be two models to draw, and two artists who will be able to give advice but this is a largely self-directed event. You will need to bring your own drawing tools – paper, canvas, etc and pens, pencils, charcoal. We will supply easels, and ambience and chilled out music.

This event is open to anyone who loves to draw the human body or would like to try their hand at drawing. A very friendly environment. Your ticket price includes a glass of wine and small plate of nibbles. There will also be a pop up bar.

Enjoy drawing for the first time or the 100th time in a safe and inclusive environment.

You will need to purchase tickets in advance and that can be done here: www.trybooking.com/events/landing/1533652 or via the QR code below.



**SUNSHINE COAST HINTERLAND WRITERS FESTIVAL
2–4 MAY**

Nestled in the heart of the Sunshine Coast Hinterland, new SCAF partner the Sunshine Coast Hinterland Writers Festival, celebrates storytelling amid stunning natural beauty. With inspiring workshops, lively panel discussions, book launches and signings, the festival fosters connection and ignites imagination. Your donation helps create an inclusive, vibrant 2026 festival, welcoming diverse voices, readers, budding writers and curious minds seeking inspiration and unforgettable shared literary experiences in a unique hinterland setting that nurtures creativity.

oriana presents

POP ROYALTY

A TRIBUTE TO THE KINGS AND QUEENS OF POPULAR MUSIC



ORIANA CHOIR

Conducted by Elisabeth Wallis Gaedtke
 Accompanied by the Oriana Band
 Also performing: Sunshine Coast Youth Choir, conducted by Sarah Laws

Sunday March 22, 2:00pm
 Matthew Flinders Performance Venue, Buderim
 Tickets: oriana.org.au

Saturday March 28, 1:30pm & 7:30pm
 The J, Noosa
 Tickets: thej.com.au 5329 6560

SCAN HERE FOR BOOKING INFO



ENQUIRIES & MORE INFO
 PH: 0431 542 343
tickets@oriana.org.au

ORIANA IS PROUDLY
 SUPPORTED BY




MAPLETON ART

The mural for the 'Bus Shelter' on Flaxton Drive outside the Mapleton State School is almost complete.
 Above: Some of the members of Mapleton Art.



QCCC WEEKLY UPDATE – TERM ONE IN FULL SWING

Over the weekend, we'll be hosting a full-site booking for a Brisbane secondary school's Grade 12 cohort, running their long-standing "Enrichment Camp" with us – a tradition that has deep roots here at Mapleton.

Next week continues the strong start to Term 1. From Monday to Wednesday, two schools from the Toowoomba region will be onsite – one bringing a Grade 7 cohort, the other their entire Grade 6–12 student body. Wednesday will be a frenetic changeover with over 450 guests onsite, as we welcome:

A Grade 7 cohort from Brisbane;

A long-term Toowoomba school partner bringing their Grade 7s – a group that has been camping at QCCC for decades.

Also next week, we'll launch the first official Survival Camp at Cobb and Co Nine Mile Campgrounds under QCCC ownership – an exciting milestone.

COBB AND CO: NOW OFFICIALLY PART OF QCCC

On Monday 3rd February, QCCC formally took ownership of Cobb and Co Nine Mile Camping Grounds as a going concern. The existing staff team transitioned across to QCCC and operations continue seamlessly, solidifying the site as the home of our flagship Survival Camp programs.

With its historic character, open bushland, and creek access, Cobb and Co is a perfect setting for immersive outdoor learning. The property even features a quirky new mini-golf course, which is proving a hit with campers and makes it a fun day-trip option for locals visiting from Mapleton! We're thrilled to officially welcome Cobb and Co into the QCCC network – a natural and exciting next step in our growth.

A promotional poster for Cobb & Co Nine Mile Campgrounds. The background is dark green with white text and images. At the top, it says 'SATURDAY 7TH FEBRUARY'. Below this are three images: a dinosaur in an enclosure, a green bus, and a person on a waterslide. In the center is a wooden sign that reads 'NINE MILE Cobb & Co CAMPING, QLD'. To the right of the images, it lists activities and prices: 'Megapilla Train Ride 10am', 'Jungle Waterslide 1-2pm', 'Day Visitors \$5.00 per person', 'Mini Golf', '5 & under \$10', '6 & over \$15', and 'Day visitor fee does not apply if you pay for mini golf'. At the bottom, it gives the address '1484 Noosa Rd TANDUR QLD'. There are green leaf-like graphics on the sides.

RECENT DEVELOPMENT APPLICATIONS IN DIVISIONS 5 AND 10

This is an initiative of Pop Up Community News aimed at providing information and heightened awareness as to developments in our region. Hopefully the information will provide a spring board should anyone wish to dive deeper into any specific application. Using the link: <https://developmenti.sunshinecoast.qld.gov.au/> or entering "development i sunshine coast" into a browser will take you to the Development i home page. Click on "Application Search" and enter the application number. Select "Details" if you want to dive deeper. The supporting documents can typically be downloaded or viewed by selecting "Application Documents" in the right hand section of the screen.

In the listings below, typically a brief editorial comment is provided after each application description. These are shown in italics.

DIVISION 10:

Lodged: 27/01/2026 DA#: OPW26/0018
92 Farrell St YANDINA – Vehicle Crossover – Ray Cripps – Bax Engineering Pty Ltd. *Long driveway to provide access to Ninderry Rd.*

Lodged: 27/01/2026 DA#: OPW26/0019 & DBW26/0011
11 Baloo St BURNSIDE – Earthworks – Lucy Joan Conway and Evan Michael Power – Buildable Approvals. *Retaining Walls; re-establishment/repair/refurbish around established dwelling.*

DIVISION 5:

Lodged: 29/01/2026 DA#: POS26/0009
9 Cherry St MALENY – BFP For Duplex – Lots 1 & 2 on SP352597 – Hinterland Surveyors Pty Ltd. *Administration, Approving Plans.*

Lodged: 27/01/2026 DA#: MCU26/0009
86 Treehaven Way MALENY – Secondary Dwelling – David & Michelle Mulligan – Danya Cook Town Planning. *Bed sit, 1 bath, on stilts, skillion roof, supplied by The Shed House, 33.95m2, on 4065m2 with primary dwelling.*

Lodged: 30/01/2026 DA#: RAL26/0006
32 Mooloolah Rd MOOLOOLAH VALLEY – Reconfiguring a Lot (1 into 2) – Heidi Louise Roberts – Ferris Town Planning. *Cuts off 1007m2 from existing 3811m2 lot which contains a dwelling and other structures to create 2 lots.*

LAST YEAR THERE WERE SEVERAL ARTICLES ADDRESSING ‘HOW TO ATTRACT WILDLIFE TO YOUR GARDEN’. THIS EDITION CONTINUES THIS THEME.

EMBRACE THE UNTIDY

To attract wildlife, embrace a ‘messy’ garden by leaving leaf litter, building log piles, and keeping dead stems, which provide vital shelter and food for insects, birds, and frogs. Avoid excessive cleaning, retain old trees, and create diverse, dense, multi-layered planting to support local fauna year-round.

This provides habitat for small animals, and a source of food for animals further up the food chain.

Key ‘Messy’ Garden Strategies for Wildlife:

- Leave the Leaves: Leaves and mulch provide crucial shelter for butterflies, moths, and beneficial insects.
- Log and Rock Piles: Place logs and stones in shady corners to offer habitat for lizards, frogs, and beetles.
- Keep Dead Stems: Leave flower heads and hollow stems standing, as they provide seeds for birds and shelter for insects.



Useful hiding places for lizards, frogs and insects



FIND a FROG in FEBRUARY
Be a citizen scientist to
Help our Frogs!

Hop into action and look for frogs!

Step outside and discover the hidden world of frogs in your backyard. Simply snap a photo and/or record a chorus of calls and share your findings with us at findafrog@mrccc.org.au. Your discoveries help us protect our local ecosystem!

Start your frog quest at: mrccc.org.au/frog-in-february/
Need help? Call 07 5482 4766 or email admin@mrccc.org.au

Upcoming frog workshops and surveys

February 2026

Thursday 5th – Obi Obi
Wednesday 11th – Gympie area (GRC Land for Wildlife members only)
Thursday 19th – Toogoom
Friday 20th – Hervey Bay (talk)
Thursday 26th – Kin Kin

For more information or to RSVP contact the MRCCC (see above)

Find a Frog in February is proudly supported by:

LEAP INTO ACTION: FIND ‘A FROG IN FEBRUARY’ IS BACK

The frogs are calling—will you answer? The Mary River Catchment Coordinating Committee (MRCCC) is delighted to announce the 10th annual ‘Find a Frog in February’ citizen science program, and we want you to be part of the celebration!

Why Your Help Matters

Frogs are more than just friendly backyard visitors; they are “nature’s alarm system.” When our frog populations are thriving, it’s a sign that our waterways and ecosystems are healthy too.

“Frogs are easy to love and even easier to observe,” says Ollie Scully from the MRCCC. “But more importantly, they tell us how our environment is faring. By reporting what you see, you’re helping us protect them for the future.”

How to Join the Fun

With our recent warm, wet weather, our local frog populations are croaking with activity! Finding them is a great evening adventure for the whole family:

When: Head out after dark when the males are calling out for mates.

Where: Look near ponds, dams, or even damp garden beds.

What to do: Snap a photo and/or record their croaks on your phone.

The Reward: Submit your findings to the MRCCC to have them identified by experts. First-time participants will even receive a special gift in the mail!

WIN: Read the 2025 Find a Frog in February report, answer the quiz questions, and be in the running to win Mike Donovan’s fabulous new book, *Reptiles and Frogs of Southeast Queensland*, which features 270 species of native and introduced frogs, freshwater turtles, geckos, legless lizards, skinks, dragon and monitor lizards as well as snakes and marine reptiles.

Join a Local Workshop

Want to learn from the pros? We are hosting community workshops and surveys throughout February in:

Obi Obi | Kin Kin | Hervey Bay (Library talk) | Toogoom

Get Started Today

Whether you are in Caloundra, Burrum Heads, or anywhere in between, your contribution makes a world of difference.

Visit www.mrccc.org.au/frog-in-february/ to download your Record Sheet:

Questions? Contact the friendly team at MRCCC on 07 5482 4766 or email findafrog@mrccc.org.au

This project is proudly supported by the Sunshine Coast, Noosa, Gympie, and Fraser Coast Regional Councils. The frogs (and the MRCCC) thank you!

Contacts:

MRCCC Resource Centre – 5482 4766

Ollie Scully – 0439 991 207

findafrog@mrccc.org.au

Grow Australian Plants

Stenocarpus sinuatus **Firewheel tree**

DESCRIPTION: Australian native tree with glossy ornate wavy lobed leaves and showy wheel-shaped flowers. Perfect for feature planting and streetscapes.

USES: Excellent for screening or as a specimen tree. Create a shady spot in the garden and enjoy watching the wildlife visit.

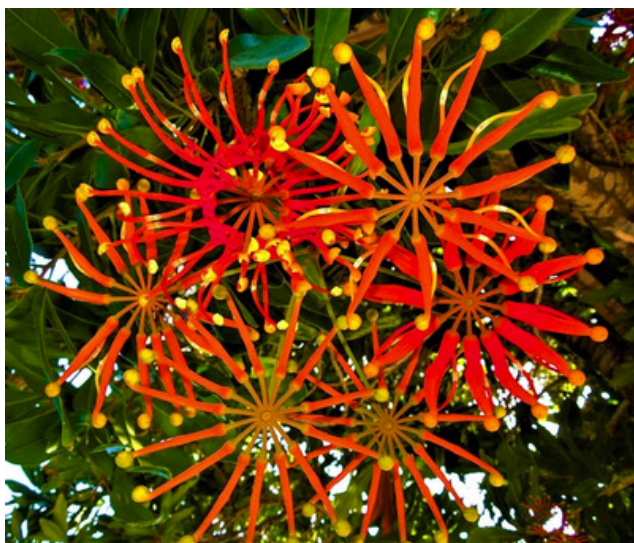
PLANTING: Plant in a well drained soil in full sun. Plant in a sheltered location out o strong wind. Apply mulch and continue to water regularly until the plant is established, usually around 12 weeks. Tolerates a light overnight frost once mature.

CARE: Tip prune while young to encourage a smaller dense rounded shape, or leave to grow tall and open. Fertilise using native fertiliser yearly.

HEIGHT: Usually 10 metres in full sun: up to 30 m in a warm shaded spot.

Currently flowering across the region.

LOCAL SPECIES



LOCAL

BLACK-FACED MONARCH

Monarcha melanopsis

The Black-faced Monarch is found along the east coast of Australia from Cape York Pen. to the Dandenong Ranges in Vic, becoming less common further south. It is a resident in the north of its range, but is a summer breeding migrant to coastal south-eastern Australia, arriving in Sept and returning northwards in March. It may also migrate to Papua New Guinea in autumn and winter.

Their habitat includes rainforest, mangroves, eucalypt forest and woodland. They can be difficult to observe when they are in the leafy upper-canopy and tend to be located by their call which is a clear rising-falling mellow whistle.

The Black-faced Monarch is a 16-20 cm long, slim, exotic looking songbird with a rather long tail. The upperparts, breast and tail are blue-grey, and the wings are a darker blue grey. It has a distinctive black face that does not extend across the eyes, with a black forehead and throat. The bill is pale blue-grey and hooked, the eyes are dark brown with a thin black eye-ring. The belly is orange-rufous.

The sexes are similar although the female is a little duller. The immatures are similar to females but without a black face.

They forage in the upper and lower canopies of the forest for insects and spiders, which make up their entire diet. Only occasionally will they hawk for flying insects. Like other Monarchs and flycatchers they have bristles around their bill to help them catch insects.

Nesting occurs from October to January in a cup-shaped nest built in the fork of a sapling and decorated with moss. Only the female builds the nest, but both sexes incubate the eggs and feed the young.

Thank you Eric anderson

Images: Top - Upper view of an adult Black-faced Monarch
Lower - Frontal view of an adult Black-faced Monarch



JP SERVICE

Monday mornings from 8:30am to 11:30am without an appointment at the Mapleton Library Community Centre.

Or Thursday mornings 9am to 11am.

Telephone 5445 7182 for a booking in Mapleton at another time.

COMMUNITY WELCOME PACK FOR NEW RESIDENTS

Collect your pack from the
Mapleton Library Community Centre

Borrowing hours: 1pm to 4pm week days
Saturdays 9am to 12noon

What does the pack include?

Community organisations brochures

Range and Hinterland PopUp Community News – a free weekly news for everyone with information about the events in your neighbourhood

List of community organisations in Mapleton, Flaxton and Montville

Zonta Business Directory

And much more

Also available at the COMMUNITY STALL at the monthly Mapleton Country Market.

RURAL FIRE BRIGADES

Call 000 for emergencies

Kureelipa

First Officer 0429 068090

Fire warden Kureelipa 0477 048616

Fire Warden Dulong 0407 412539

E: kureelparfb@gmail.com

Address: Bradford Rd, Kureelipa

Post: Kureelipa RFB P.O. Box 4931, SCMC, 4560

Monthly Meetings: 7.30pm on the first Thursday

Mapleton

First Officer (all operational matters): 0428 137927

Fire Warden (fire permits, safety checks): 0499 778806

Secretary (new members, administration): 0499 883019

W: <https://www.facebook.com/mapletonruralfirebrigade/>

E: MapletonRFB@gmail.com

Address: 37 Obi Obi Road, Mapleton 4560

Post: PO Box 366, Mapleton 4560

Monthly Training: 5:30pm on the 2nd Tuesday

Monthly Meeting: 5:30pm on the 3rd Tuesday

Montville

Call Mark Roderick, First Officer on 0409 480058 for queries and training information

Call John Watson, Fire Warden on 0477 712175 for permits

The team meets every second Monday at 7.00pm and the final Wednesday of each month at 7.00pm

MONTVILLE UNITING CHURCH

Services are held each Sunday at 8.15am when a combined service is held at Maleny Uniting Church at 9.45pm. All welcome.

Minister: Rev Nathan Barton

E: minister@ourcommonlife.org.au

M: 0429 632527

The church is open as a Reflection Gallery every day from at least 10am till 3pm.

ST. MARY'S ANGLICAN CHURCH

On the green, Montville

Sunday Eucharist at 8am

Wednesday Meditation with Maureen 9am

Baptisms, funerals and wedding enquiries welcome

Parish Office: 5499 9130

E: stmarysmontville@gmail.com

Date Claims

6 February Trivia, Bingo—Pit yourself against the Odds, 9:30am, Mapleton Library Community Centre.

6 February Murder Mystery Night, 5:30pm, Maleny RSL.

6–7 February A Midsummer Night's Dream, Maleny Playhouse.

12 February Parkinson's Awareness, 1:30pm, Mapleton Men's Shed.

13 February Blackall Range Probus Club, 10am, Mapleton Bowls Club.

14 February Lovers of Books, Mapleton Library Community Centre.

15 September A Midsummer Night's Dream, Mapleton Hall Gardens.

18 February Free Foot Health Check, 9am–1:30pm, Mapleton Community Hall.

21 February Always Valentine Trivia Night Zonta, 5:30pm, Maleny Community Centre.

23 February Baroon History Group, Dr Ray Kerkhove, Blackall Range Ethnohistory, The Green Room, Mapleton Public House, 5:00pm.

19 April Book Fair and Mini Market, Mapleton Library Community Centre.

2–4 May Sunshine Coast Hinterland Writers Festival.

26 May Family Fun Day, 9am–2pm, Kenilworth Arts Council.

Disclaimer: The Editor and Team assume no responsibility or liability for the content of this publication.



DID YOU KNOW?

WHERE CAN I PARK IF ALL THE PARKS ARE FULL OUTSIDE THE MAPLETON IGA/BP?

The parking outside the Mapleton State School on Flaxton Road is Council parking so you can use this location to park.

Otherwise, there are several parking spaces behind the IGA/BP building, and you walk up the slope.

COMMUNITY INFORMATION

Community safety concerns raised by Community Members

Thank you to all those who have shown concern regarding three of the safety issues in the Mapleton village:

1. The footpath on Flaxton Road between the State School car park entry and the BP/IGA. The path is sloping, making it impossible for those with mobility devices to use. The post office is being moved to the IGA. This section of the footpath is essential for many residents to obtain their mail. Contact Council
2. The footpath on Obi Obi Road outside the Pub. The path is level, but the ground between the path and the gutter is sloping, and residents often slip. This was investigated several years ago, but the cost to improve is high owing to the power poles along that side of the road. Contact Council
3. A pedestrian crossing on Obi Obi Road was requested several years ago for the safety of residents. Now that the post office is moving to the IGA, many residents will need to cross this road. Contact TMR or Marty Hunt

Thank you to those who have already sent requests to Council and TMR.

Council: Division10@sunshinecoast.qld.gov.au

TMR: nicklin@parliament.qld.gov.au; Maroochydore at 5451 7055

Every individual contact addressing these community concerns, strengthens the case to improve the safety in our village.

Let's fill the in-boxes and help keep your family, neighbours and friends safe

.



LOOKING AFTER YOUR EAR HEALTH

By Natalie, your local Hinterland Pharmacist @ Lindner Family Pharmacy, Mapleton

Our ears are essential for hearing, balance, and communication, yet they're often easy to overlook until something feels wrong. With a little everyday care—and the right support—many common ear problems can be prevented or managed early.

The key tip is to avoid using cotton buds or other objects inside the ear canal, as these can push wax further in and cause blockages. If earwax does build up, your local pharmacy stocks gentle ear drops designed to soften and help remove excess wax safely over time.

Protecting your ears from loud noise is also important. Repeated exposure to high volumes can lead to long-term hearing damage. For those working or living in noisy environments, reusable earplugs available at the pharmacy can offer simple, effective protection. Ear discomfort, itching, or a feeling of blockage can sometimes be linked to colds, allergies, or minor infections. Our pharmacy team can offer friendly advice and recommend suitable ear sprays or soothing drops where appropriate, as well as let you know when it's best to see a doctor.

If you have questions or concerns about your ears, feel free to stop by and have a chat. Your local pharmacy is here to provide helpful products, practical guidance, and friendly support to keep your ears—and your hearing—in good health.



A LITTLE PIECE OF MAPLETON HISTORY

The building currently occupied by the Mapleton Pharmacy was built in 1924 and has a varied history, serving several different purposes in the local community over the past century: a bakery, a private house, a h and chip shop and a building designer's office. The Mapleton pharmacy relocated to this historic site in 2009.

The building is part of the established history of Mapleton, a town that grew rapidly in the early 20th century, supported by a tramway from Tambour opened in 1915 and the thriving local citrus industry.

If you have any images and/or further information about the pharmacy building please contact mapletonqueensland@gmail.com



LOVERS OF BOOKS
SATURDAY 14 FEBRUARY 2026
5.30pm–7.30pm

The annual Lovers of Books at Mapleton Library Community Centre is being held on Saturday 14 February with six local authors who have been highly recommended to us by Rosetta Books.

This is a great opportunity to meet with published authors who have helpful experience with the writing journey including how to find an agent and publisher, how to carve out time to write, how their story kernels come to them, what research they need to do (or not) – there is so much that goes into writing whether it be memoir, non fiction, fiction, children's, historical, science fiction.

For \$10 per person (including glass of wine and finger food) you will be able to ask those questions you always wanted to have answers to.

You can book your place either through the Library by dropping in (Monday–Friday 1pm–4pm, Sat 9am to midday) or phoning the volunteers there on 5445 7011 or via Try Booking at <https://trybooking.com/events/landing/1505140> or via the QR code below.

So many ways to have an enjoyable evening!

We would love to see you there.



Drawing Class for Beginners: Creating 3D Drawings
STAGE 2 – continue to develop your skills

Date: Tuesday, 17 February

Time: 2:00pm – 4:00pm

Location: Verandah of the Mapleton Library Community Centre

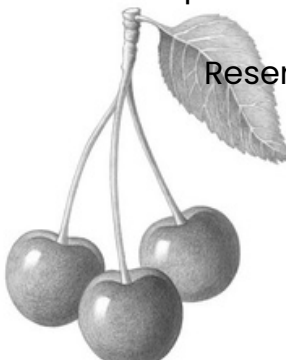
Join us for a fun and relaxed beginner-friendly drawing class where you'll learn how to create stunning 3D drawings step by step. No experience needed – just bring your creativity!

All equipment and supplies are provided, so all you need to do is show up and enjoy. Notes will be provided. Perfect for anyone wanting to explore new techniques, improve their sketching skills, or simply try something creative!

Reserve your spot today – spaces are limited

Cost: \$20

Email: mapletonlibrary@gmail.com



RECOGNITION OF THE BUCKLEY FAMILY AND THE MAPLETON POST OFFICE SITE

Thank you so much to everyone for your preferences to say 'thank you' to the Buckley family. We received more than 90 individual or group feedback and many suggestions and comments.

The preferences indicate both a desire to record historically the Post Office location and service of Postmasters, and also to provide specific recognition and thanks for the Buckley family.

Based on the feedback both short and longer term ideas are being actioned:

1) **Short term** – immediate 'Thanks' to Buckley family

A gift from residents in the form of a selection of vouchers purchased from the local businesses has been selected as an immediate 'thank you'. If you would like to be part of this 'gift voucher box', please make a cash contribution. Peter Gamgee and Nita C Lester will be purchasing the vouchers over the coming week: please give your contribution to either Peter or Nita should you wish to support this project.

OR There is a donation box placed at **La Botiga**

OR Mapleton Bowls Club

All contributions and purchases will be fully and transparently accounted.

Your support will mean so much to the Buckleys.

In the event we have excess contributions they will be held and put towards the longer term projects.

2) **Longer term** – historical recording of Post Office location and Postmasters and the Buckley's service

a. A historical plaque located on the footpath outside the current Mapleton Post Office site was a popular selection. This plaque would note the site as 'of historical importance'.

b. A plaque on a bench recording the community's thanks to the Buckley family for 18 years of generous service was also a popular choice.

These longer term projects require Council involvement/approval so we will need to follow their processes, with no idea yet on timing and ultimate cost.

Nita and Peter are currently investigating these on behalf of the community, and we will keep you informed.

Also – please feel free to individually leave a note of thanks, and drop it in at the Post Office.





Montville Reflection Gallery

Space to rest and reflect 10 am to 3 pm most days of the year!
Montville Uniting Church, 152 Main Street, Montville

Before Lent Live in God's Light— An Exhibition by Barbara Willcock

Catch the latest exhibition of our regular contributing artist from now until 17 February!

After a career of 39 years in Office Administration with a year's diversion as a Patisserie proprietor, Barbara moved to the Sunshine Coast with her husband in 1998. She became interested in painting in 2008 after her husband died when she undertook a watercolour painting course using her husband's now neglected paints.

She relished the experience of attempting to paint and seeing some improvement as she practiced the techniques delivered in the weekly workshops.

Although not an easy medium to begin with, Barbara was inspired to have a go and she now enjoys the challenge of painting mostly flowers and scenes from trips both at home and overseas.

In 2011, she became a member of the Blackall Range Visual Artists, a self-help art group, and their encouragement and critiques of her work have helped her to develop her own style.

Taking inspiration from God's creations around her, she is both challenged and excited to paint images that express her impression of what she sees; enjoying the form which emerges of mostly the landscape and flowers, now in watercolour, acrylic and oil.

Bawdy Codpiece Theatre Company
presents

A MIDSUMMER NIGHT'S DREAM

AN OUTDOOR SHAKESPEARE EVENT

Tickets online only
<https://www.trybooking.com/DINYI>

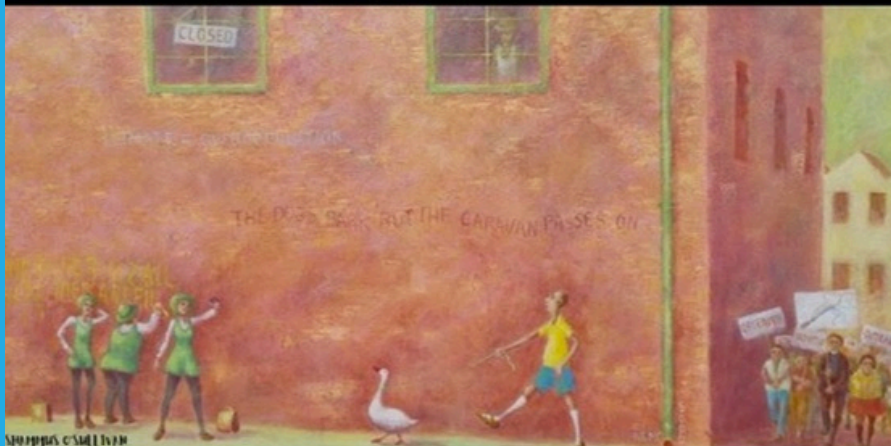
Kindly supported by
MALENY
REALTY

Maleny Playhouse, Maleny Showgrounds
February 7th and 8th 4pm
Mapleton Hall Gardens February 15th 4pm

Full details of this event
can be found at the link
<https://bawdycodpiece.com.au/>

Kenilworth ArtsFest

22ND - 24TH MAY 2026



KENILWORTH ARTS COUNCIL

FRI 22ND 5.30PM OPENING NIGHT \$10

STREET FOOD VANS BAR COFFEE

LIVE MUSIC

SAT 23RD 9-4PM \$5.00

SUN 24TH 9-1.30PM \$5.00



FREE ACTIVITIES

KENILWORTH FAMILY FUN DAY

SUNDAY 24TH MAY 2026

9-2PM

KENILWORTH SHOWGROUNDS

JUNIOR BURGER BAND

PUPPETS AT PLAY
WORKSHOP

TORI MASON AND
THE BURNING FIRE
BAND
MAMA BILUKA

SES

OLD POLICE
FIRETRUCK
OLD
AMBULANCE

BUG CLUB-MRCCC

KITE MAKING

PTSD DOGS AUSTRALIA

SKYFALL SILKS

SUNSHINE COAST COUNCIL
STALLS

BUILD A RAINFOREST IN A JAR
DR SARAH PYLE

FACEPAINTING

FOOD VANS

KIDS IN
ACTION

KUBATUBA

MEET THE AUTHOR

WILVOS

YOGA
WORKSHOPS

CARDBOARD BOX CONSTRUCTIONS

KENILWORTH SAFE SPACE

ARTISAN STALLS

STILT WALKERS

BUSH CRITTERS

FUNKYBOOKS-CHRIS
COLLIN



www.kenilworthfamilyfun.day

REPEATS



**the
MAPLETON
CHOIR**
themapletonchoir@outlook.com

The Mapleton Choir is about to commence its first term of singing for 2026. Under the care and tutelage of Brian Martin, we will once again bring a selection of songs we love to sing to the community.

We begin rehearsals on Monday 2 February. We rehearse every Monday except during school holidays, from 7.00-9.00pm at the Kureelpa Dulong Community Hall, Corner Jewett Road and Mapleton Road, Kureelpa.

We will end the first term with two concerts on 6 and 7 June.

Our subscription fees are \$100 per term. All music is provided to our members at the beginning of each term.

We have a lot of fun. Brian is a highly respected and well known choir director with a number of choirs under his belt. He is a great believer in the joy of singing and really believes that everyone can sing. Even you, reading this with much scepticism. Come along and find out!

This term our songs will include Africa (made famous by Toto), The Lion Sleeps Tonight (Elton John), Boy From New York City (Manhattan Transfer), You Raise Me Up (Westlife). There are also several classical pieces. So there is something and more for everyone.

We are a non auditioning choir and we welcome everyone who wishes to be a part of a fun and entertaining community choir.

If you are interested in finding out more, please contact the secretary at themapletonchoir@outlook.com.



EXPRESSION OF INTEREST – PRESIDENT, ARTS CONNECT INC.

Arts Connect Inc. is seeking Expressions of Interest for the volunteer role of President.

This is an opportunity to help guide a respected, member-driven organisation that supports and connects artists across the Sunshine Coast through events, exhibitions, workshops, and professional development.

We welcome EOIs from individuals with leadership experience or a strong interest in governance, community arts, and collaboration.

For a brief role outline or to submit your EOI, please contact: president@artsconnectinc.com.au

EOIs close: 15 February 2026

Recent Development Applications in Divisions 5 and 10

This is an initiative of Pop Up Community News aimed at providing information and heightened awareness as to developments in our region. Hopefully the information will provide a spring board should anyone wish to dive deeper into any specific application.

Using the link: <https://developmenti.sunshinecoast.qld.gov.au/> or entering "development i sunshine coast" into a browser will take you to the Development i home page. Click on "Application Search" and enter the application number. Select "Details" if you want to dive deeper.

The supporting documents can typically be downloaded or viewed by selecting "Application Documents" in the right hand section of the screen.

In the listings below, typically a brief editorial comment is provided after each application description. These are shown in italics.

DIVISION 10:

Lodged: 20/01/2026 DA#: OPW26/0012

28 Nambour Mapleton Rd NAMBOUR – Earthworks & Stormwater – Infinity CE Pty Ltd. *Associated with a 10 unit rooming accommodation development.*

DIVISION 5:

Lodged: 19/01/2026 DA#: RAL26/0004 & OPW26/0011

32 Wilson Ave WOOMBYE – Reconfiguring a Lot by Subdivision (1 Lot into 2 Lots) Earthworks, Stormwater, Road work & Driveway Access – Treetop Place Pty Ltd TTE – Murray & Associates (QLD) Pty Ltd. *849m2 lot into 2, 417m2 and 432m2, corner lot.*

Lodged: 16/01/2026 DA#: POS26/0001

397-429 Western Ave MONTVILLE – Reconfiguration of a rural lot (1 lot into 2) – Lots 2 & 3 on SP355679 – Murray and Associates. *Legal doc fee loaded 16/1 as missed. Approving Plans.*

Lodged: 23/01/2026 DA#: RAL26/0005

484 Glenview Rd GLENVIEW – Reconfiguration of a Lot (1 Lot into 2 Lots) – Kerry Bevan Nissen – Braydon Jones. *Approximately 2.55ha lot split onto 8376m2 lot and 1.716ha.*

Lodged: 22/01/2026 DA#: MCU26/0008 & CAR26/0035

8 Hillfoot Lane MONTVILLE – New Construction of Dwelling – 2 Storey – Metricon Homes Pty Ltd – Suncoast Building Approvals. *5 bed all ens, plus 2 guest bedrooms, plus powder on lower floor, 2 garage, 12.5° pitch, on 19,540m2.*

Lodged: 27/01/2026 DA#: POS25/0239

2 Summer Place PALMWOODS Reconfiguration of 1 Lot into 2 Lots – SP359282 Lots 941 & 942 – Formia Project Management. *Administrative, Approving Plans.*

Lodged: 22/01/2026 DA#: RAL19/0123.02

109 Oehmichen Road WITTA – Minor Change to Existing Approval – Subdivision 2 into 2 Lots – Peter Thompson – Murray & Associates (Qld) PL. *Request proposes a secondary building envelope on Lot 4 to accommodate a non-habitable shed, plus allowance for creek crossing to reach new building envelope.*

Lodged: 22/01/2026 DA#: MCU24/0201.01

39 Isambert Rd GLENVIEW – Minor Change to Existing Approval – Second Dwelling House – Prabakar Kuppasamy – Danya Cook Town Planning. *Initial approval for new primary dwelling and modifications to existing dwelling of 2 levels, 2 bed, 2 bath with 28° gables, plus carports under, and 18.8m from primary dwelling house. Minor change requests existing dwelling to be demolished, and replaced with single level, 3 bed, 2 bath, carport, 22° and 15° gables, now positioned 85.6m from primary dwelling. Reason for change given as: "quotes he has obtained from builders are rather high, prompting my client to conclude that it would be more cost-effective to demolish the existing dwelling"*

IT'S THAT TIME OF THE MONTH, WHEN COMMUNITY ORGANISATIONS' PROMOTIONAL POSTERS ARE INCLUDED.

If your organisation has a poster, please forward it for inclusion in the next edition.



Not-for-profit Community Gym

We welcome all ages (15+) & fitness levels

We will help you achieve your health and fitness goals whether it is to increase fitness, stability, strength, mobility or mental health & wellbeing

- individual programs
- classes – senior strength & stability, circuit, boxing, yoga, tai chi
- qualified instructors
- flexible membership
- no lock-in contracts
- friendly & social



Contact: Paul 0439 670 629

Tina 0493 101 730

Or drop into the gym – we are located behind the Mapleton Bowls Club overlooking the Lilyponds (5 Post Office Rd, Mapleton) www.rangecommunitygym.com.au

MAPLETON LIBRARY COMMUNITY CENTRE

Owned and staffed by volunteers

DGR status, so all donations are tax-deductible



Over 11,000 books, magazines and DVDs for borrowing [children, young adults, large print].

JP services, laminating, internet, printing, other computer services, and monthly bingo.

Workshops, events, public notice board, and community brochures. Recycling, domestic violence goods and donated food collections.

A quiet place to relax and meet friends.

E: mapletonlibrary@gmail.com

W: mapletonlibrary.au



MAPLETON CRAFT GROUP

Meets every Wednesday 9am to 12noon at the Mapleton Bowls Club.
Like a raft of creativity beside the Lilyponds; we gather to inspire and motivate our members for 30 years.

Your initial visit is free of charge. Come and enjoy the creative atmosphere and share a [free] morning tea with our members.
Explore the variety of talent that can enrich you life. We look forward to seeing you soon!



Zonta International is an international service organization with the mission of advancing the status of women.

If you are interested in becoming a member of the Zonta Club here on the Range, please contact the President Margy Henderson. E.

president@zontablackallrange.org.au

Promotional space in 2024 Business Directory is now available

MAPLETON ART

A small group of artists meet every Thursday morning from 9am to 11am.

They investigate techniques and materials for continued professional artistic development.

If you think this group might be right for you, drop in one Thursday at the Mapleton Library Community Centre or Email: mapletonlibrary@gmail.com

Currently working on the 2027 calendar to raise money for more Art in Public Spaces.



Kureelpa Hall—1st Saturday of every month at 8am.

Mapleton 3rd Wednesday every month at 9am [in the grounds of the RangeCare Op Shop].



PROBUS CLUB OF NORTH BLACKALL RANGE INC

Venue: Mapleton Bowls Club, 5 Post Office Road, Mapleton

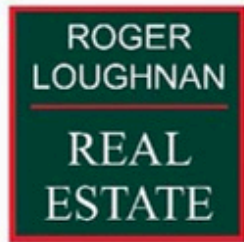
The Probust Club of North Blackall Range Inc meets on the second Friday of the month from February to November at the Mapleton Bowls Club for fun, fellowship and friendship between 10am and 12noon.

We have interesting guest speakers, fun outings and several special interest groups.

Annual Membership is \$65 which covers meetings for the year, Public Liability Insurance, hire of venue and morning teas. There is a once off joining fee for new members of \$25.

Interested persons are welcome to come to our meeting free for the first visit to see if it suits them.

Supporting local businesses that support the community



Mapleton



ottiam GROUP



ROSETTA BOOKS



RECYCLING IN MAPLETON

SPECTACLES are collected by Lions from the Mapleton Library Community Centre.

CANS and BOTTLES Containers for Change

Mapleton Bowls Club - There is a convenient collection point which is a wheelie bin placed near the entrance. Bins can be distinguished from others by its bright blue lid.

Mapleton State School P & C. All your donations would be gratefully received and will go towards resources for our school and students.

Mapleton Men's Shed These may be left in the bins in front of the storage shed in Mapleton Forest Drive.

MOBILE TELEPHONES Roger Loughnan Real Estate, corner Post Office Road and Obi Obi Road Mapleton, is a registered drop off location for people to donate their old working phones with chargers etc. The staff will deliver these to DVSafe Phone.

Also place in any Lion's spectacle box at the Mapleton Bowls Club and the Mapleton Library Community Centre.

BLISTER PACKS Mapleton Library Community Centre verandah

USED PENS Mapleton Library Community Centre verandah

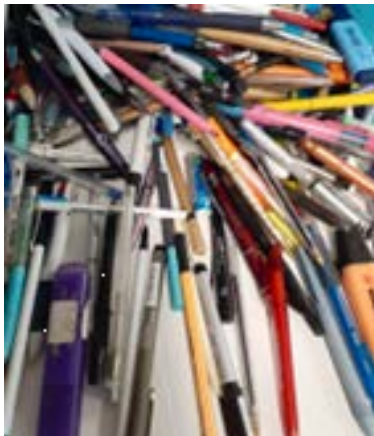
RING PULLS from aluminium cans

Lions will forward these for a mobility device for children. Container on the Library Community Centre verandah



YARN LIBRARY Sewing, knitting and embroidery items to swap—containers inside the Library Community Centre

PLANTS There are stands outside the Mapleton Library Community Centre where you can leave plants for someone else who might like them.



PROCEDURES FOR RANGE AND HINTERLAND POPUP COMMUNITY NEWS MANAGEMENT

The Range and Hinterland PopUp Community News was launched in 2016. The News has gone through many changes with no one organisation controlling the News—it is truly a community news: for the community by the community. Auspiced by the Mapleton Library Community Centre since 2016 which provides insurance, financial support and much more.

The News offers opportunity to promote events and provide information to all community groups across the Range and the Hinterland
Thank you everyone.

The Range and Hinterland PopUp Community News is edited, published and distributed by volunteers.

There will be no discussion or correspondence on matters pertaining to the Range and Hinterland PopUp Community News.

- All articles for the Range and Hinterland PopUp Community News are to be sent to mapletonqueensland@gmail.com
- If it is important to have an article included in a specific edition, forward article as early as possible. Generally the cut off time for publication is noon Tuesday each week but as this is a fully volunteer publication inclusion is not guaranteed.
- Articles can be emailed at any time. Please include contact name and contact details.
 - All articles are to be sent digitally unless otherwise pre-arranged.
- Pop up Community News is published weekly but open to review at any time. A short holiday over Festive Season each year to give the volunteers a well earned holiday.
 - Currently Thursday night for distribution is the target time.
- No lost animals, political, religious, personal opinions or missing person notification will be published.
 - Negative or derogatory comments will not be published.

Email mapletonqueensland@gmail.com requesting guidelines.

Anyone wishing to receive the Range and Hinterland PopUp Community News, send your email address to mapletonqueensland@gmail.com

Anyone wishing to cease receiving the Range and Hinterland PopUp Community News, send your email to mapletonqueensland@gmail.com
Disclaimer: The Editor and Team assumes no responsibility or liability for the content of this publication.

Keep informed through the web and social media
www.facebook.com/groups/mapletonqueensland/

www.mapletonlibrary.au

Remember, if you wish to receive the

**RANGE AND HINTERLAND
POPUP COMMUNITY NEWS**

Email mapletonqueensland@gmail.com

Current circulation over 4,500



LIST OF COMMUNITY ORGANISATIONS for Flaxton, Kureelpa, Mapleton and Montville

Blackall Range Lions Club blackallrangelionsclub@outlook.com;
facebook.com/blackallrangelionsclub/ <http://www.brlc.org.au>

Blackall Range Visual Artists Thursdays, Mapleton Bowls Club

Blackall Range Woodcrafter's Guild secretary.brwg@gmail.com

Blackall Range Zonta Club membership@zontablackallrange.org.au.
www.zontablackallrange.org.au

Bush and Beach Walking Group bushbeachwalkers@gmail.com

Hinterland Quarry Action Group T: 0416 155116 aveivers@iprimus.com.au

History Group montvillehistorygroup@gmail.com

Kureelpa & Dulong Community Hall kureelpahall@gmail.com

Mah-jong Wednesday weekly at Mapleton Bowls Club

Maleny Golf Club T: 5499 9960 gm@malenygolfclub.com.au
www.malenygolfclub.com.au

Maleny Scottish Country Dancing Monday nights, Maleny RSL Hall: 0429
654033: eshjay2010@gmail.com

Mapleton and District Community Association madca@gmail.com

Mapleton Art Thursdays Mapleton Library Community Centre. Contact:
mapletonlibrary@gmail.com

Mapleton Bowls Club T: 5445 7913 www.mapletonbowlsclub.com.au

Mapleton Bridge Club bridgeaustralia.org
mapletoncontractbridgeclub@gmail.com

Mapleton Choir Kureelpa Hall themapletonchoir@outlook.com

Mapleton Country Market countrymarket.mapleton@gmail.com

Mapleton Craft Group Wednesdays 9-12noon, Mapleton Bowls Club

Mapleton Fire Warden T: 0493 044052

Mapleton Library Community Centre mapletonlibrary@gmail.com
www.mapletonlibrary.au T 5445 7011

Mapleton Hall and Sportsground Trustees mapletonhall@gmail.com

Mapleton Men's Shed www.mapletonmenshed.org.au

Mapleton Movers Heart Foundation Walking Group T: 0417 476768

Mapleton State School Parents and Carers Association:
mapletonpandc@gmail.com

Mapleton Quilters Mondays 9-12 noon, Mapleton Bowls Club

Mapleton RSL Sub Branch Matt Dykes 0427263595 mdykes7@gmail.com

Mapleton Rural Fire Brigade First Officer T: 0428 137927, Secretary: 0499
883019

Mapleton Tennis Club mapletontennis@gmail.com
www.tennis.com.au/mapleton-tennis-club

Montville Anglican Church huesong2@gmail.com

Montville Chamber of Commerce info@montvillecommerce.com.au

Montville Masonic Lodge montville260@outlook.com

Montville Rural Fire Brigade montville.rfb@bigpond.com

Montville School P&C msspandcpresident@gmail.com

Montville St Mary's Hall stmaryshallmontville@gmail.com

Montville Tennis Club montvilletennisclub1925@gmail.com

Montville Uniting Church minister@ourcommonlife.org.au

Montville Village Association secretary.mva@gmail.com
www.montvillevillageassociation.org.au

Probus Club of North Blackall Range Secretary 0493 632703
nbrprobus@gmail.com

Range Community Gym and Fitness Centre mapletongym@gmail.com
www.rangecommunitygym.com.au