

RANGE AND HINTERLAND POPOP COMMUNITY NEWS

Weekly news

A community service since 2016

19 February 2026

Issue 478

WHAT IS ON THIS WEEKEND?

** 21 February: Always Valentine Trivia Night Zonta, 5:30pm, Maleny Community Centre.

** 22 February: Eudlo Markets

SUNSHINE COAST REGIONAL COUNCIL'S REPLY TO SAFETY MATTERS RAISED BY COMMUNITY MEMBERS

Dear Community Members

Thank you for your recent enquiries to Council and Cr Law regarding the safety of the footpaths around Mapleton, particularly the section from the BP service station around to Mapleton State School.

Our Footpath Supervisor has attended the site and completed a full inspection of this area. No maintenance-related hazards were identified. However, the steep gradient of the footpath – which reflects the natural slope of the hill – was noted.

To explore possible improvements, this matter has been forward onto the Transport Infrastructure Branch to assess design options that may help reduce the footpath grade where feasible. We will also ask them to investigate the possibility of installing a new pedestrian crossing at the Delicia Road and Obi Obi Road intersection. A crossing at this location may assist residents to cross safely without needing to traverse the steep grassed embankment.

While the grade of the natural embankment cannot be altered, we are committed to exploring practical design solutions that can improve safety and accessibility for all community members.

Sunshine Coast Regional Council

Genealogy Sunshine Coast is having a Discovery Day on Saturday February 28, from 10am-2pm at their premises in Petrie Park Rd., Nambour (opposite the swimming pool).

Head on over and find out how they can help you with your research, where they have free access to world records in Ancestry, Familysearch and other websites.

See their treasure trove of local history records and peruse their vast library and digital collection. Morning tea supplied, but please bring your own lunch.

T: 5329 2315 for more information.



CONTENTS

Council's reply to Safety Matters
Genealogy Sunshine Coast
Elizabeth with Community
Vouchers
Lovers of Books
Mahjong
Maleny Film Festival
Barre Mapleton Community Hall
Games Mapleton Library
Community Centre
Art Exhibition, Montville

Healthy Ageing Forum
Story Dogs
Cleaner Australia
Local History
QCCC
Development Applications
Fauna and Flora
Community Services
Date Claims
Local Organisations' Contacts
and more



**THANK YOU FOR THE GENEROUS DONATIONS GIVEN BY
COMMUNITY MEMBERS. ELIZABETH IS PHOTOGRAPHED HERE
WITH A SELECTION OF THE BUSINESS VOUCHERS.**

Peter Gamgee was away so thanks is extended to Graham Patterson who accompanied Nita. Graham came to Mapleton to live that same year as the Buckley family purchased the Post Office. Nita and Graham presented Elizabeth with the vouchers.

Elizabeth and Anika were busy stocktaking, so were glad for the break. Elizabeth was in good cheer. Graham and Elizabeth recalled incidents of the past when the Buckylys were involved in numerous community events.

The long-term project of placing a historical plaque on the footpath outside the building was discussed but Elizabeth and the family have another idea. They would prefer that the community place the plaque on the wall on the northern end of their property ... and ... paint a mural. Elizabeth said these would then be part of the Mapleton Art and History Trail.

Hence a plaque is being designed, and a meeting of four local artists is scheduled for the near future to create a mural design that will be presented to the family for agreement.



LOVERS OF BOOKS - ST VALENTINE'S DAY

On the evening of 14 February, while many were traditionally celebrating romance, our local Mapleton Library Community Centre was filled with a different kind of love: a love of books, stories, and the written word. Lovers of Books, a special St Valentine's event, brought together six talented writers and an enthusiastic audience for a warm, inspiring night to remember.

Thank you to all the volunteers for organising such a successful event. Thank you to Rosetta Books for helping with the author selection.

Events like Lovers of Books remind us that libraries are not only places to borrow books but vibrant community hubs where creativity flourishes. Judging by the fantastic turnout and the enthusiastic feedback, this St Valentine's evening celebration of literature has certainly captured hearts, and they look forward to continuing this cherished annual tradition.

Here's to stories, community, and many more evenings filled with the joy of reading.





FUN AT THE MAPLETON BOWLS CLUB - MAHJONG

If you are looking for a relaxing afternoon, come and join this happy group. The members do spend a couple of hours playing mahjong before relaxing together.

Turn up at the Club at 12noon on a Wednesday, and the members will ensure there is a place for you. Beginners or advanced - everyone is welcome.



MORE ILLEGAL CAMPING IN MAPLETON

Top and middle images are at the Lilypond Park car park.

Lower image outside the Library Community Centre beside the school.



maleny **FILM** festival



Celebrating Australian Cinema

Fri 13 March  **FANCY DRESS** (optional)
Australian Film Character

5.30 pm **Launch Party**
Maleny Community Centre

7.00 pm **The Travellers**

Sat 14 March

3.00 pm **Carmen and Bolude**

7.00 pm **Kangaroo Island**

Sun 15 March

11.30 am **Journey Home David Gulpilil**

2.00 pm **Kangaroo**

Ticketing

Festival Passes available from 14 Feb
Session Tickets available from 1 Mar
Book online or at Maleny Info Centre

Festival Passes:

Members \$50

Non-Members \$75

Individual Sessions: \$8-\$13

Venue Maleny Community Centre

Maleny Grove

Seasons  IGA

REMAX
Hinterland

MAPLE
STREET
CO-OP


Queensland
Country Bank

gcmnews

malenyfilmsociety.au

maleny **FILM** festival

Launch Party (Festival Pass Holders Only)

Join us for a complimentary drink and light bites as we kick off our festival. **Optional Fancy Dress:** Come dressed as an Australian Film Character 

The Travellers

Australia-NC-Drama-97m - M

A farewell visit spirals into emotional chaos as past loves, family tensions, and unfinished lives collide.

Short: *Apocalypse No*

Carmen and Bolude

Australia-CR-Drama-109m-M

Best mates race from New York to Sydney to satisfy tradition and secure love.

Short: *A Dog's Tale*

Kangaroo Island

Australia-CR-Comedy/Drama-113m-M

A Hollywood star returns home, unearthing sisterly rifts and secrets amid panoramic land and seascapes.

Short: *Way on the Wayside*

Journey Home David Gulpilil

Australia-CR-Bio/Doco-128m-M

David Gulpilil's final gift: a sacred cinematic testament to culture, ceremony, and enduring story.

Kangaroo

Australia-CR-Drama-107m-PG

A disgraced TV host and an Indigenous girl embark on a mission to save joeys and themselves.

Bonus Shorts: Locally prized shorts will screen with some feature films in a collaboration between Maleny Film Society and the Rangebow Microfilm Festival.

CR: in English with captions requested; NC: in English, no captions

malenyfilmsociety.au

JOIN OUR VIBRANT BARRE COMMUNITY!

Discover the fun and challenge of Barre in our local community!
Mapleton Community Hall

What is Barre?

A unique blend of ballet, Pilates, and yoga, Barre is a low-impact, high-intensity workout that sculpts, strengthens, and energises your body. No dance experience needed.

Class Layout:

- 45-minute Barre workout targeting core, arms, legs, and glutes
- Follow along with instructor-led exercises at the barre
- Plus: Stretch, relaxation, and meditation at the end to leave you feeling centred and refreshed!

Benefits:

- Improve posture, balance, and flexibility
- Tone and strengthen your entire body
- Boost energy and confidence
- Join a supportive community that feels like family!

About Me:

I'm Han, a passionate instructor dedicated to creating a welcoming space for all levels. My classes are designed to challenge and nurture you, leaving you feeling empowered and at peace.

Pricing: Trial class only \$10

When: Tuesdays, 5:45pm

Who: All levels welcome

Come try a class and experience the Barre buzz!

No dance experience needed, just a willingness to move and grow. Can't wait to meet you!

Please feel free to reach out to me

T: 0473 972018

Play games, win prizes!

A morning of bingo, trivia, tea & prizes!



Friday 13th March 2026

9:00 am - 11:30am

Mapleton Library Community Centre, Obi Obi Rd

Fun & games for just \$12 per person



**Mapleton Library
Community Centre**

CARINA ROBERTSON

Debut Solo Exhibition
18/2 to 28/3 | 2026
10-3 daily



REFLECTIONS ON GRATITUDE

Montville
Reflection
Gallery
152 Main Street
Montville Qld

Contact | carinarobertson16@gmail.com
0411 3234 994

Healthy Ageing Forum

Staying in the Driver's Seat



Driving represents independence, connection, and freedom. As we age, staying safely behind the wheel can require new awareness, planning, and tools—but it doesn't mean giving up control.

Staying in the Driver's Seat is an informative and supportive forum designed to help older adults continue driving safely for as long as possible, while also preparing confidently for future transportation needs. The forum focuses on practical strategies, current research, and real-life solutions that respect personal independence and choice.

This forum encourages open conversation, questions, and shared experiences. Whether you are an active driver, noticing changes, or simply planning ahead, Staying in the Driver's Seat is about staying informed, staying empowered, and staying mobile—on your own terms.

When: Thursday, 5th March 2026. 9am to 12pm

Entry: \$10 (+ booking fee)

Where: Sunshine Coast Health Institute,
6 Doherty St, Birtinya.
*Please park in P2 - accessed via Bullwinkel Lane.

Free Parking. Parking will be validated for all attendees.

Morning Tea included

Tickets available
via Eventbrite



Presenting Partners



"Education is not the filling of a bucket, but the lighting of a fire"
William Butler Yeats

Story Dogs is the spark to
light the fire!



'Charl' the bearded Collie makes a perfect reading partner



Fun Reading 🐾 Reading for Life

Volunteers Needed

Do you have a well behaved dog and a few
hours spare a week?

Sponsor a Dog

Make a real difference in the lives of local
children. Help us eradicate illiteracy in
Australia. Sponsor a dog.

Visit the web site or make a **donation** to:

BSB: 032584 (Westpac)

Account: 286132

Account name: Story Dogs Ltd

Or

with your credit card via secure
GIVENOW on the Story Dogs web
site

www.storydogs.org.au

Contact Details

Email – info@storydogs.org.au

Web Site – www.storydogs.org.au

Facebook -

<https://www.facebook.com/storydogs>

Instagram -

https://www.instagram.com/storydogs_au



Your local coordinator –

Our mission is to make
reading fun for children, so
they become confident,
lifelong readers.



'Kendra' the Story Dog enjoying another good story.

Dogs make reading FUN!

Story Dogs is a reading support
program where selected
children read to an accredited
dog and its handler.

Reading takes place in a quiet area of
the school such as the library or
verandah outside the classroom.
Sessions run for 20 minutes, where
each child is one-on-one with the Dog
Team.



The books used in the program are
suitable for each child's reading level,
are engaging and inspire children to
read for enjoyment and knowledge.

When children read to a dog
the outcomes are amazing:

- They have FUN
- They are not judged
- Their focus improves
- Their reading skills increase
- Their confidence soars

Testimonials

"We are recommencing the program tomorrow and I cannot stress enough how successful the program has been. The program has been a wonderful initiative with the children WANTING to read to Samson."

Phil Hesse - Principal
St Simon the Apostle Primary School,
Rowville VIC

"There has been a marked improvement in students' reading results as well as fluency and comprehension. I feel this program is invaluable." Michelle Webster – Centaur Primary School, NSW

The Dogs

All breeds, except for restricted breeds, can be assessed to be Story Dogs. The dog's temperament, obedience and willingness is of utmost importance. The safety of the children is paramount.

Dog Teams must pass an accreditation by a certified dog trainer as well as being immaculately groomed, vaccinated and vet checked.



'Ruby' listening patiently

Julie-Anne Simpson
Sunshine Coast Volunteer Coordinator, Mountain Creek and
Hinterland Region.

T: 0412 540782

E: julieannes@storydogs.org.au



CREATING A CLEANER AUSTRALIA - 1 MARCH

At Clean Up Australia, our mission goes far beyond just cleaning up. We're here to inspire and empower our communities, schools, businesses and councils to drive change.

Education is the key to lasting impact, and through it, we aim to foster a deeper understanding of how we can protect and conserve our environment.

Together, we can eliminate litter, reduce waste, and create a cleaner, healthier Australia for generations to come. Read on to find out more about what we do.

ONE MAN'S VISION

It's hard to believe that this initiative was the inspiration of one man, Ian Kiernan, AO. [Image above] An avid sailor, Ian was shocked and disgusted by the pollution and rubbish that he continually encountered in the oceans of the world. Taking matters into his own hands in 1989, Ian organised a community event called 'Clean Up Sydney Harbour' with the support of a committee of friends. He expected just a few hundred volunteers. Instead, 40,000 people showed up, sparking a national movement.



CULTURE AND TRADITION TAKE CENTRE STAGE AT AUSSIE WORLD FOR LUNAR NEW YEAR

Saturday 28 February 2026, 5:00pm - 9:00pm

From \$11 per person ... **Banana Bender Pub** ... 1 Downunder Drive, Palmview

Aussie World will come alive with vibrant colours, tradition and family fun for the 2026 Lunar New Year Lantern Festival on Saturday 28 February from 5pm to 9pm.

Lunar New Year is a cultural celebration marking the beginning of the new year on the lunar calendar, which is based on the moon's phases. The Sunshine Coast Chinese Association will host the annual Aussie World event. It will include a lively atmosphere of cultural performances, traditional elements, themed food offerings and entertainment throughout the theme park.

Live performances will include traditional dance, music and cultural shows complete with glowing lights, decorations and vibrant displays. Guests can feast on authentic, traditional cuisine, including Tangyuan, which is a special dessert for the Lantern Festival.

Entry to the Lantern Festival only costs \$11 per person.

Entry to the Lantern Festival and unlimited access to Aussie World's rides and attractions start from \$41 per person.

There will be a small gift for those who get in quickly and purchase their ticket to the first 500 tickets sold.

For more details visit www.aussieworld.com.au



Second Mapleton Public Hall in the 1930's.

A BRIEF 110 YEAR HISTORY MAPLETON COMMUNITY HALL

Mapleton Hall and Sportsground, 31 Obi Obi Road, Mapleton has been held in Trust since 1911.

An early Pioneer, Mr W H Rosser donated the land (part of his early selection). The early pioneering families set about clearing the scrub and erecting a Hall.

This hall was destroyed by a bushfire in 1915.

The replacement hall was constructed (the present one) and was officially opened in 1916.

It has been the venue for dances; celebrations; Sunday School; a library; meetings; annual Mapleton Days; formation of a Rifle Club, Brass Band, Boys Club, Dramatic Club; Sports and Pastimes Clubs; Q.C.W.A. and Ladies Club; school concerts, socials and fancy dress, concerts ; picture theatre; first aid classes, Red Cross and Comforts Funds Organisations and a Patriotic Committee; Euchre Card Games; Girl Guides and Youth Groups; Roller Skating; indoor bowls; Football and Cricket Clubs. Annual 'Back to Mapleton Days' were also held here. Plus much, much more.

In early years, the grounds were well utilised by the local Bullockies leasing the grounds and active soccer, cricket, football teams. 1928 and 1956 – the two tennis courts were established – Tennis was also very popular – they have been fully refurbished in recent years and are available for hire .

In 1940, The Hall and Grounds were commandeered by The Army for its base for several years.

In the late 1960's, the closed Dulong School was purchased, demolished and the timber etc used to add 'The Supper Room' extension to the hall.

A donated Cottage was relocated to the grounds and has been home to The Mapleton Historical Group, A Theatre Group and The Local R.S.L Branch.

Memorial Trees have been planted around the grounds.

1918 - 4 Pines were planted honouring Mapleton's 4 fallen soldiers

1979 - 41 Ornamental Memorial Trees were planted honouring Mapleton's early pioneers and Settlers, including a Lone Pine Tree for The RSSAILA Branch

1985 - 22 trees were planted acknowledging Past and Long Time Residents and Maroochy Shire Councillors.

1986 - 15 Trees planted, continuing from 1985.

1987 - 1 Tree planted acknowledging Mr. Rob Williams decades of service to Mapleton and district.

1995 - A Memorial Tree was planted for 'Australia Remembers 1945' – 1995 by Mr. Brian De Vere, Mrs. Joan Ensbey and Mr. Roy Williams in Memory of Mapleton and District who served.

A project for Mapleton's Centenary Celebrations in 1988 was the framed 'Historical Photographic' collection permanently mounted on the hall walls.

The entire site is zoned 'Sport and Recreation' and of historical significance under the present S.C.R.C.Town Plan.

In more recent years, it's become the venue for various yoga groups, meditations, Bootybarre, dance, fusion, ballet for children, musicians, singing circles, the monthly markets, weddings, memorials, celebrations, music festivals, Lions movie nights etc.

The Hall and Grounds are available for hire.

Thank you, Lindsey Wareham



WEEKLY ACTIVITY UPDATE

Over the weekend we are hosting a large Music Camp, and the grounds will once again swell with the sound of orchestral rehearsals as schools prepare for Eisteddfod season. There's something special about hearing strings and brass drift through the rainforest – a fitting soundtrack for Mapleton.

Next week brings big numbers, including some of our largest and long-standing client schools. From Monday to Wednesday, we'll host:

- A Grade 7 cohort from North Brisbane; and
- A combined Grade 9/10 camp from "out west," travelling a long way for a rainforest experience.

From Wednesday to Friday, one of our largest school partners will have exclusive use of the site. Their students will also spend time tent camping under canvas as part of their long-running sequential program with us (Grade 7–10). Each year builds skills and resilience in preparation for later expeditions and Survival programs – it's a thoughtful and developmental pathway we're proud to facilitate.

In Memoriam – Brad Van Der Vliet

Last weekend we paused to remember Brad Van Der Vliet, who commenced working at QCCC Mapleton when the venue opened in 1983. Brad was a loyal and much-loved member of our community, and many will remember his infectious personality and remarkable achievements in the Special Olympics. We held a memorial service with Brad's family, where staff and friends gathered to reflect and give thanks for the impact Brad had on our community.

It is fitting that, as we establish new seated benches for quiet contemplation around the site, Brad's memory is honoured here – in a place he faithfully served for so many years.



RECENT DEVELOPMENT APPLICATIONS IN DIVISIONS 5 AND 10

This is an initiative of Pop Up Community News aimed at providing information and heightened awareness as to developments in our region. Hopefully the information will provide a spring board should anyone wish to dive deeper into any specific application. Using the link: <https://developmenti.sunshinecoast.qld.gov.au/> or entering "development i sunshine coast" into a browser will take you to the Development i home page. Click on "Application Search" and enter the application number. Select "Details" if you want to dive deeper. The supporting documents can typically be downloaded or viewed by selecting "Application Documents" in the right hand section of the screen.

In the listings below, typically a brief editorial comment is provided after each application description. These are shown in italics.

DIVISION 10:

Lodged: 11/02/2026 DA#: OPW26/0038

40 Lantana Lane MAPLETON - Operational Works for Earthworks, Roadworks, Landscaping and Streetscape - Andrew Waite - Everett Property Development Management. *Relates to RAL23/0042, 1 lot into 2.*

Lodged: 09/02/2026 DA#: RAL18/0116.07

Widmayer Estate 3 Daisy Lane EUMUNDI - Minor Change to Development Approval - Reconfiguring of a Lot into 11 Community Title Lots and Common Property - Matt & Charlene Sprott - Building Approvals United Queensland. *Retaining wall and building slightly encroaches on building envelope. Mostly a large section of 1100mm high retaining wall.*

Lodged: 12/02/2026 DA#: RAL26/0009

865-883 Delicia Rd OBI OBI & 885-917 Delicia Rd COOLABINE - Reconfiguration of Lots (2 Lots into 2 Lots) - Phillip and Louise Wood - Danya Cook Town Planning. *1981m2 transferred from 1 lot to the other to accommodate a dam wall.*

Lodged: 17/02/2026 DA#: MCU26/0027

215 Bunya Rd NORTH ARM - Secondary Dwelling - K & D Thomas - Adapt Development Management Pty Ltd. 3 bed, 1 bath bungalow on lot with an existing granny flat.

Lodged: 16/02/2026 DA#: OPW26/0050

4 Paradise PI NAMBOUR - Electrical Design - Millwell Services Pty Ltd. *Relates to RAL21/0051, 1 lot into 3.*

DIVISION 5:

Lodged: 11/02/2026 DA#: OPW26/0042

9 Cossins Rd NORTH MALENY - Earthworks, Stormwater & Landscaping - OR Keys & JJ Keys - Murray & Associates (QLD) Pty Ltd. *Relates to RAL22/0055, 1 lot into 4.*

Lodged: 13/02/2026 DA#: OPW26/0048

70 Mooloolah Meadows Dr MOOLOOLAH VALLEY - Non standard crossover - Brighton Homes Queensland - Professional Certification Group Pty Ltd. *Non standard in numerous areas including multiple cross overs for the property.*

Lodged: 12/02/2026 DA#: OPW26/0046

86 Palmwoods-Montville Rd PALMWOODS - Landscaping - McCormick Australia - Covey Associates Pty Ltd. *Relates to large commercial complex.*

Lodged: 11/02/2026 DA#: RAL18/0089.01

Tallowood St and 5 Candle Vine St MALENY - Minor Change to Development Approval - Reconfiguring of 2 Lots into 43 - Robert and Kylie Lee - Innovative Planning Solutions. *No records published as at 18/02/2026.*

Grow Australian Plants

Melaleuca viridiflora **Broad-leaved paperbark**

Variable height from 3m-8m featuring bark grey to cream, fibrous and in papery layers. Leaves are broad, dull dark green, stiff and thick. The new growth is hairy.

The flower spikes are usually green or cream, but some forms are pink. Prefers full sun.

Will grow in a wide range of soils and does particularly well on heavy clays which are waterlogged during the wet.

Attracts bees and small honeyeater species. Native to northern tropical Australia and New Guinea.

LOCAL SPECIES



LOCAL

Dusky Honeyeater

Myzomela obscura

The Dusky Honeyeater occurs in the islands of central and southern Torres Strait and north-eastern mainland Australia from about Point Keats in the NT to coastal and subcoastal Qld from Cape York Peninsula south to Moreton Bay. It is also a common resident of the Aru Islands and southern New Guinea.

They inhabit a wide range of habitat types, including rainforests, vine scrubs, dense coastal eucalypt woodlands, mangroves, paperbarks and parks and gardens where vegetation is not sparse.

They are a busy small, 12-15 cm long, slim dark sooty-brown bird with dark brown eyes, a long thin down-turned black bill and grey-brown legs. The sexes are alike but adult males are larger than adult females. Take care to not mistake it for the similar looking and smaller Brown Honeyeater (which is much paler, has yellow on the wings and a triangular patch behind the eye).

Although of sombre plumage they are likely to be seen darting from flower-to-flower feeding on the nectar and insects from a variety of flowers including those of bottlebrushes and grevilleas. On rare occasions they vary their diet of nectar and insects by eating fruit.

Their usual call is a short mournful whistle or single note, often repeated and described as a squeaking warble or a jumble of squeaky, high-pitched notes, tip-tip-eeee-chip, with the third note longer and descending.

Breeding occurs Aug-Jan in an open cup nest of rootlets, grass and spider web located from about 2m above ground to the top of the forest canopy.

Thank you Eric Anderson

Images:

Opposite - Adult Dusky Honeyeater

Below: Adult Dusky Honeyeater looking for nectar in a *Grevillea*



Community Service

JP SERVICE

Monday mornings from 8:30am to 11:30am without an appointment at the Mapleton Library Community Centre.

Or Thursday mornings 9am to 11am.

Telephone 5445 7182 for a booking in Mapleton at another time.

COMMUNITY WELCOME PACK FOR NEW RESIDENTS

Collect your pack from the
Mapleton Library Community Centre

Borrowing hours: 1pm to 4pm week days
Saturdays 9am to 12noon

What does the pack include?

Community organisations brochures

Range and Hinterland PopUp Community News - a free weekly news for everyone with information about the events in your neighbourhood

List of community organisations in Mapleton, Flaxton and Montville

Zonta Business Directory

And much more

Also available at the COMMUNITY STALL at the monthly Mapleton Country Market.

RURAL FIRE BRIGADES

Call 000 for emergencies

Kureelpa

First Officer 0429 068090

Fire warden Kureelpa 0477 048616

Fire Warden Dulong 0407 412539

E: kureelparfb@gmail.com

Address: Bradford Rd, Kureelpa

Post: Kureelpa RFB P.O. Box 4931, SCMC, 4560

Monthly Meetings: 7.30pm on the first Thursday

Mapleton

First Officer (all operational matters): 0428 137927

Fire Warden (fire permits, safety checks): 0499 778806

Secretary (new members, administration): 0499 883019

W: <https://www.facebook.com/mapletonruralfirebrigade/>

E: MapletonRFB@gmail.com

Address: 37 Obi Obi Road, Mapleton 4560

Post: PO Box 366, Mapleton 4560

Monthly Training: 5:30pm on the 2nd Tuesday

Monthly Meeting: 5:30pm on the 3rd Tuesday

Montville

Call Mark Roderick, First Officer on 0409 480058 for queries and training information

Call John Watson, Fire Warden on 0477 712175 for permits

The team meets every second Monday at 7.00pm and the final Wednesday of each month at 7.00pm

MONTVILLE UNITING CHURCH

Services are held each Sunday at 8.15am when a combined service is held at Maleny Uniting Church at 9.45pm. All welcome.

Minister: Rev Nathan Barton
E: minister@ourcommonlife.org.au
M: 0429 632527

The church is open as a Reflection Gallery every day from at least 10am till 3pm.

ST. MARY'S ANGLICAN CHURCH

On the green, Montville
Sunday Eucharist at 8am
Wednesday Meditation with Maureen 9am
Baptisms, funerals and wedding enquiries welcome
Parish Office: 5499 9130
E: stmarysmontville@gmail.com

Date Claims


20 February Live and Sleep Deprived, Kureelpa Hall.

21 February Always Valentine Trivia Night Zonta, 5:30pm, Maleny Community Centre.

22 February Eudlo Markets

23 February Baroon History Group, Dr Ray Kerkhove, Blackall Range Ethnohistory, The Green Room, Mapleton Public House, 5:00pm.

28 February Mapleton Country Market, 8am-Noon, car park outside the Mapleton State School.

1 March Clean up Australia.  Clean Up Australia Day

4 March Basket Weaving Workshop, 9am-1pm, Mapleton Library Community Centre.

13-15 March Maleny Film Festival, Maleny Community Hall.

21 March Trivia Night, Montville Hall.

19 April Book Fair and Mini Market, Mapleton Library Community Centre.

2-4 May Sunshine Coast Hinterland Writers Festival.

26 May Family Fun Day, 9am-2pm, Kenilworth Arts Council.

Disclaimer: The Editor and Team assume no responsibility or liability for the content of this publication.



MORE PLANTS ARE NEEDED, PLEASE

The Plant Library at the Mapleton Library Community Centre is very bare.

If you have any unwanted potted plants, please donate.

Every dollar raised helps to ensure all the services offered by the Centre will continue.

For example: Just this morning, the Centre provided JP services, hosted an art group and provided space so a community member could sit for an on-line business examination.

FROM ONE FAMILY TO ANOTHER

REPEATS



Last day of outstanding service to Mapleton: our lovely Buckley family. From the left: Yvonne, Xantha, David with Cody, Elizabeth and Anika
Photographer: nita

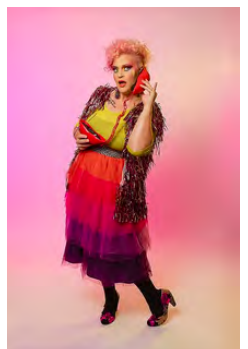


First day for the Anderson family. Jess, Kelly, Linda, Marianne, Brendan, Kel plus Caitlin from Australia Post, far right. Thank you for continuing our postal service in Mapleton.
Photographer: Anji, Australia Post

'Live and Sleep Deprived', a comedy show by Jenny Wynter supported by Andrea Kirwin (comedy debut) is coming to Kureelpa Hall on Friday 20 February. 6pm doors for 6.30pm show, bring your friends for a hilarious night out! BYO dinner and drinks and see you there!

JENNY WYNTER

Known for her warm audience interaction and improvised comedy, Jenny creates hilarious songs on the spot based on audience suggestions. No two shows are ever the same - anything can happen and will! Expect quick wit, catchy tunes, and never-to-be-repeated musical moments. Whether she's singing about your embarrassing childhood memory or the weird way you met your best friend, Jenny's sharp comedic instincts and impressive musical skills guarantee a show of laughter, surprise and delight.



Proudly hosted by Peace Run Records and Agency.

Tickets available at \$25 pre-sale at www.peacerunrecords.com/events or \$30 on the door.

Always Valentine

TRIVIA

NIGHT

Fundraiser



SATURDAY
21 FEBRUARY 26

5:30PM FOR 6:15PM START
MALENY
COMMUNITY CENTRE

Silent Auction
Trivia Winners Prizes
Prizes for Best Dressed
Player & Team

BYO snacks
Drinks at Bar
Tea, Coffee & Treats
Bring gold coins
for games



ZONTA
CLUB OF
BLACKALL
RANGE INC

TICKETS \$20pp - TABLES OF 8



Funds raised support
ZONTA's local projects
assisting women & girls

BOOK BY 10 FEB

Call: Lynelle 0429 629 125 or Margy 0412 206 305

MAPLETON COUNTRY MARKET

EVENTS & DATES 2026



February 28th - First for the Year

March 28th - Easter Event

April 25th - No Market (Anzac Day)

May - 23rd - Best Dressed Dog
Parades - Large & Small

June 27th - Celebrating Children

July 25th - Christmas in July

August 22nd - Normal Market

September - 26th Normal Market

October 24th - Halloween Event

November 28th - Pre Christmas Event
(Last for the Year)



The BAROON HISTORY GROUP

Blackall Range Ethnohistory.

Talk by Dr Ray Kerkhove.

The Green Room, Mapleton Public House

Monday 23 February 2026,

5:00pm for 5:30pm – 7:00pm.

Fee \$5.00

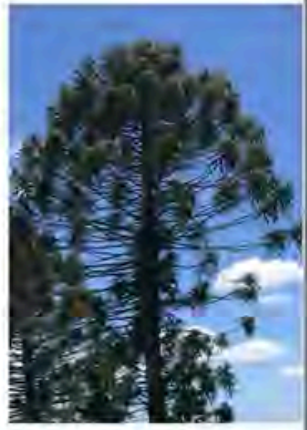
A light snack will be served.

Please come early to purchase drinks.

Ray's books will be available for sale.

All welcome.

Please RSVP: info@talkingcountrybuildingbridges.com



Ray Kerkhove is a professional ethnohistorian and writer. By blending historical methods with anthropological insights and using diverse sources he specialises in reconstructing Indigenous lifeways, (economies, material culture, plant uses) and sites, including conflict and resistance (Frontier War) sites and Frontier War tactics. He is an expert on the Blackall Range Indigenous history. He has written dozens of books and many heritage reports. In conjunction with Indigenous knowledge his work is regularly used to help inform cultural revival projects, for example the 'Bunya Project'.

Between 2020 and 2021 Ray was Historian-in-Residence with the Noosa Council, and 2021-2022 Historian-in-Residence for Sunshine Coast Council. In 2017-2019 he was a Visiting Research Fellow at Griffith University. He is currently a Research Fellow at the University of Queensland's Social Sciences School (Archeology).



Illegal camping in Mapleton, particularly around Lilyponds Park, Mapleton Falls, and the National Park, has surged, prompting increased monitoring and fines from authorities due to concerns over waste, fire hazards, and child safety. While related to homelessness, this activity violates local laws, with maximum fines for camping in national parks reaching \$2,875.

Residents have reported unauthorised, itinerant camping at Lilyponds Park, road-side parking areas, Mapleton Falls carpark, and the Obi Obi lookout.

National Park Issues: Illegal camps, including abandoned vehicles and household waste, have been removed from Mapleton National Park. These sites are deemed fire and pollution hazards.

Safety Concerns: QCCC has raised concerns regarding the proximity of illegal campers to youth, citing compliance obligations under the Child Safe Organisations Act 2024.

Enforcement: Sunshine Coast Council manages illegal camping under Local Law No. 4, with increased enforcement and fines in 2025.

Legal Camping: The only authorised camping in the area is at the designated Gheerulla camping area in Mapleton National Park, which requires a permit.





**THE HEALTH BENEFITS OF WEIGHT LOSS AND PRODUCTS
LOCALLY AVAILABLE**

By Natalie, your local Hinterland Pharmacist @ Lindner Family Pharmacy, Mapleton

Is having a healthy weight one of your New Year Resolutions? Achieving and maintaining a healthy weight can offer many important health benefits. Even modest weight loss has been shown to improve energy levels, support heart health, reduce strain on joints, and help with blood sugar and cholesterol control. For many people, it can also lead to better sleep, improved mobility, and an overall sense of wellbeing.

At Lindner Family Pharmacy in Mapleton, we stock the 'Medical Vita Diet' range. This is designed to support weight loss in a safe, structured way. It uses nutritionally balanced products, such as meal replacements, to help manage portions and simplify daily food choices while still providing essential nutrients. This structure can make it easier to stay consistent—often a key factor in successful weight management. It tastes good too!

Regular monitoring by healthcare professionals helps ensure weight loss is progressing safely and appropriately, particularly for individuals with existing health conditions or those taking medications. This added support can provide reassurance and help people stay motivated.

The Medical Vita Diet aims not only to support weight loss, but also to encourage healthier habits that can lead to long-term improvements in health and quality of life.

If you're thinking about making healthier changes, feel free to visit us and take a look at the Vita Diet range. Whether you're just starting out or looking for a little extra support, your local pharmacy is here to help—one friendly conversation at a time.



THANK YOU DOREEN

After 25 years of service to the Mapleton Library Community Centre, Doreen Browne has taken off her volunteering hat.

The images tell the story: huge support from the community; past and current volunteers sharing stories and telling tales; Doreen relaxed amongst new and old friends. The organising team of six [image below] Sharn Donnison, Nita C Lester, Jann Victor, Sue Bennink, Joyce Simpson and Andrea Walker, planned, created, designed and had heaps of fun. Delicious treats, beautiful flowers and traditional china and cutlery created the superb setting for the Long Table High Morning Tea.



Right: Doreen cutting her cake with Sue Bennink in the background. Sue made and decorated the cake. Far right: the Long Table



Top: Karen Hardy and Liz Miller Lower: Susan Diplock and Lenore Tonks

REPEATS

BASKET WEAVING WORKSHOP

weaving along the middle path



Wednesday
4 March
9am - 1pm

Mapleton Library
Community
Centre

Obi Obi Road

Limited space available

BOOK NOW

\$75

T: 5445 7011

E: mapletonlibrary@gmail.com

MVA PRESENTS

Trivia Night

IT'S THE TRIVIA YOU KNOW
AND LOVE!

Once again, our
fabulous team will challenge
and quiz you.

Let's see who our 2026
winning team will be!

- Family friendly
- Bar available
- tables of 8 (Build your own team or join some new friends)

get
YOUR
TICKETS



21 MAR 2026

7.00-- 09.30PM | MONTVILLE VILLAGE HALL

MORE INFORMATION AT

EVENTS.MVA2021@GMAIL.COM

MONTVILLE VILLAGE ASSOCIATION

THE BEGINNINGS OF THE CURRENT MAPLETON IGA/BP/POST OFFICE

The Cooper family had moved to Mapleton in 1978. In the early 80s, Tony and Marion bought a few vacant blocks of land near the Mapleton School. Tony's vision for the blocks was to create a tourist attraction with replica historical buildings showcasing artisans to be called "Old Mapleton Town".

Unfortunately as they were unable to secure the extra block of land needed and there were a number of objections, the development proposal was not approved. The Coopers turned their disappointment into building a local business complex with a café "Cherries on the Hill", "Grandmas Cupboard", a takeaway, a bakery, a nursery, a lookout and the Service Station.

Tony ran Grandma's Cupboard featuring ceramic gifts made at the on-site studio and Crabtree and Evelyn products with Marion busy in the café. Tina Cooper was both creating ceramic artworks and teaching classes whilst Richard operated the service station.

With several changes in ownership, the complex has seen many changes over the years. A Food Barn was the start of the transition of what is now the IGA and BP Service Station owned and operated by the Anderson Family.

Thank you Shiralee Cooper



Grandma's Cupboard

LUNCHTIMES AT CHERRIES

BEVERAGES
Cappuccino
Coffee
Tea
Hot Tea
Fruit Juice
Ice Cream Soda

SNACKS
Assorted Sandwiches
Tinned Pies
Open Sandwiches

LUNCHES
Hawaiian Ham Steak
Pineapple Lamb
Quiche and Salad
Ham Salad
Chicken Salad
Salmon Salad
Egg & Cheese Salad
Soup of The Day

DESSERTS
Sherry Trifle
Fruit Salad
Pudding
Sundae

DRINKS/HERB TEAS
7443 A LA MOORE
Ginger
Cherry Cola
Coke

LOOK FOR OUR SPECIAL OF THE DAY
"NON-SMOKING"

MAPLETON VILLAGE SQUARE
offers

- ★ CHERRIES ON THE HILL - Restaurant . . .
- ★ GRANDMA'S CUPBOARD . . .
- ★ BP - AUTO AND FUEL . . .
- ★ MAPLETON VILLAGE TAKE-A-WAYS . . .
- ★ VETERINARIAN, Surgeon - Animal & Farm Supplies . . .
- ★ LOOKOUT TOWER . . .

NAMBOUR to MAPLETON - 10 kms, 15 mins.

MAPLETON, QUEENSLAND AUSTRALIA

"A Little Piece of Heaven"

MAPLETON

... a picturesque country town... is situated at the Northern end of the scenic Blackall Range, less than 15 minutes from Nambour and 30 minutes from the major Sunshine Coast Resorts. This quaint township provides many facilities for the tourist including Potteries, Arts and Crafts Galleries as well as many fine Eating Establishments. Then, for those who seek the peace and tranquility of a tropical rainforest, the Mapleton Falls National Park and the Kondalilla Falls is a very enjoyable experience. Mapleton Falls just off the Obi Obi road provides delightful views of the Obi Obi valley as well as short bush walks, picnic, BBQ and toilet facilities. For longer bush walks or rides there is a magnificent Forest Drive through Mapleton Forest Reserve, which is one of the largest hardwood forests in Australia. Take a walk down to Kondalilla Falls which drop and cascade 75 metres in a valley of Rainforest and Palms.

To reach Mapleton, head for National Park Road west from Nambour, opposite the show grounds, which leads to Mapleton Road, for just over 12 km of picturesque scenery. On reaching Mapleton turn south along the tourist drive where just some 300 metres on your right you will find... THE VILLAGE SQUARE, Mapleton... Be sure to stop at the Village Square Lookout for a panoramic view of the Sunshine Coast... You can be sure of a warm welcome in Mapleton.

WISHING WELL

Throw in a few cents,
Make a BIG WISH,
Support our local Kindy.

OTHER ATTRACTIONS
SMITHY via Mounville
MINIATURE ENGLISH VILLAGE Flaxton
RAIN FOREST PARK Maleny
MAPLETON FALLS via Obi Obi Road
KONDALILLA FALLS
STATE FOREST DRIVE Mapleton

THE VILLAGE SQUARE

CHERRIES ON THE HILL
Tel: (071) 45 7588

Charming Colonial Restaurant. Serving Lunches, Snacks, Morning and Afternoon Teas, with a range of English and Herb Teas, Beautiful Cappuccino Coffee, Home Made "Fare".

For a quick coffee or leisurely lunch at reasonable prices "Cherries" is a must.

GRANDMA'S CUPBOARD
Beautiful Gifts of Yesteryear

Including English Silverware, World Wide Ceramics, Lots of Old Fashioned Teddy Bears, Beautiful Glass & Crystal Ware, Porcelain Dolls & Clowns, A Wide Range of Carved Wooden Ducks together with lots more Treasures.

We are official stockists of CRABTREE & EVELYN Toiletries and Cosmetics... Take a trip back to the Good Old Days.

BLOOMINGDALES pots & plants

It's a delight just to stroll through, but offers established plants in pots. Healthy hardened natives from \$2.95, as well as beautiful blooms and superb hanging baskets tastefully presented for gifts.

BP PETROL & DIESEL
Tel: 45 7405

Oils and Lubricants and a wide range of motor accessories

CLEAN/MODERN PUBLIC CONVENIENCES

VILLAGE TAKE-A-WAYS
Ice Cream, Cold Drinks, Hamburgers, Milk, Bread and General Take Aways.

The Village Square flier was made when they first opened.
Thank you Shiralee.

There are more images to hand but if anyone has images and information we can add to this history please forward to mapletonqueensland@gmail.com
Thank you

Mapleton

Art and History

Trail

Discover our heritage throughout the Mapleton village

1915 - 2015

CHOOSING YOUR WATER SOURCE DURING HOT, DRY TIMES

Whether it's a balcony, a suburban yard or a rural garden, adding a water source to your home is a simple but effective way that you can help local **native birds and wildlife** year round.

You don't need to buy a fancy bird bath, either – everyday household items are also a great option.

You can use:

- Plastic tubs and containers
- Buckets
- Hanging pots
- Upside-down bin lids
- Kitchen pots or pans
- Ceramic dishes, or even
- A clam shell pool.

Try to avoid metal, as this can overheat in hot weather.

Different species prefer different depths of water, so try a variety of shapes and sizes to see what water sources work best for the birds in your backyard.

Keep it fresh. Birds are using this water to drink and bathe in, so it will need to be replaced daily to avoid the spread of disease (and mozzies!)

Keep it clean by cleaning and scrubbing your bird bath regularly. You can clean and disinfect containers in your dishwasher, or by soaking them in a bleach solution (one cup of domestic-strength bleach to four litres of water). Rinse thoroughly and leave it in the sun to dry.

Keep it cool by placing the water source in shade, away from direct sunlight.

Keep it safe by placing water sources close to trees and shrubs, so birds can have an escape route and a safe place to hide and keep watch. Add a perch, such as rocks, a brick or a branch to the water (especially if the bath is smooth or deep). If a bird or other animal falls in, it can climb out safely.

Keep pets away or indoors, where they can't reach the water source or the birds using it.

Other things to consider:

Think about the birds you want to attract. Abundant, pest, or introduced species will often dominate food and water sources, so choose a quiet spot close to shrubs to attract smaller, shyer native species.

You can also avoid bath bullies by placing a range of water sources at different heights around your garden, so that every bird has a place to drink and bathe.

Stay alert. If you've got a pond, check it daily in case a bird has fallen in, and provide a ramp or heavy rope so they can get out.



RECENT DEVELOPMENT APPLICATIONS IN DIVISIONS 5 AND 10

This is an initiative of Pop Up Community News aimed at providing information and heightened awareness as to developments in our region. Hopefully the information will provide a spring board should anyone wish to dive deeper into any specific application. Using the link: <https://developmenti.sunshinecoast.qld.gov.au/> or entering "development i sunshine coast" into a browser will take you to the Development i home page. Click on "Application Search" and enter the application number. Select "Details" if you want to dive deeper. The supporting documents can typically be downloaded or viewed by selecting "Application Documents" in the right hand section of the screen.

In the listings below, typically a brief editorial comment is provided after each application description. These are shown in italics.

DIVISION 10:

Lodged: 06/02/2026 DA#: MCU26/0018

83 Main Camp Rd EERWAH VALE - Secondary Dwelling - Jack Dalziel and Meleeta Edwards - Brennan Planning Pty Ltd. *2 bed, 1 bath, plus extra external WC, skillion roof on stilts, on over 4.6ha with existing primary dwelling and out buildings.*

Lodged: 02/02/2026 DA#: POS26/0003

19 Wombat PI NINDERRY - Survey Plan SP352434 (2 Lots) - DSQ Land Surveyors. *Administrative, Approving Plans*

Lodged: 02/02/2026 DA#: POS24/0191

Netherton Place - 19 & 21 Netherton Street Nambour - Survey Plan SP344875 for Access Easement - Focus on Surveying. *Administrative, Approving Plans*

Lodged: 30/01/2026 DA#: OPW26/0024

35-53, 55-73, 75-93 Brandons Rd & 47-69 Steggalls Rd YANDINA - Stormwater & Roadworks - Stockland Land Lease Management Pty Ltd - Colliers International Engineering & Design Pty Ltd. *Relates to development of a retirement facility, MCU22/0394.*

DIVISION 5:

Lodged: 09/02/2026 DA#: MCU26/0023

117 MacDonald Rd PALMWOODS - Secondary Dwelling - James Mason - Danya Cook, Danya Cook Town Planning. *1 bed, 1 bath cabin, skillion roof, on slab on large lot with existing primary dwelling.*

Lodged: 09/02/2026 DA#: MCU26/0021 Impact Assessable

30 MacDonald Rd PALMWOODS - Animal Keeping - Aaron Liddelow - Locality Planning & Consulting. *Impact Assessable. On 104,770m2 lot, accessed by easement not on applicant title. Documentation includes building plans, have been unable to find pen layouts and accommodation capacity details.*

Lodged: 29/01/2026 DA#: POS26/0009

9 Cherry St MALENY - BFP For Duplex - Lots 1 & 2 on SP352597 - Hinterland Surveyors Pty Ltd. *Administration, Approving Plans.*

Lodged: 12/01/2026 DA#: RAL23/0125.01

The Homestead 154 Neill Rd MOOLOOLAH VALLEY - Minor Change to Development Approval - *Reconfigure a Lot (1 into 8 Lots), Roadworks, Rehabilitation, Electrical, Stormwater & Clearing Vegetation - AUSPOWER Connect. No descriptive records on file.*

Lodged: 06/02/2026 DA#: OPW24/0443.01

435-437 Flaxton Dr FLAXTON - Minor Change to Development Approval - Earthworks, Vehicle Crossover, Electrical and Street Lighting - David Ross - Urban Catalyst 3 Pty Ltd. *Change to approved plan 223259 RL01 to enable the driveway location to be modified to achieve a single point of access onto Flaxton Drive.*

Lodged: 04/02/2026 DA#: POS26/0011

366 and 366A Blackall Range Road West Woombye - Survey Plan SP359409 (2 Lots into 2 Lots) - Murray & Associates. *Administrative, Approving Plans*

LIST OF COMMUNITY ORGANISATIONS for Flaxton, Kureelpa, Mapleton and Montville

Blackall Range Lions Club blackallrangelionsclub@outlook.com;
facebook.com/blackallrangelionsclub/ http://www.brhc.org.au

Blackall Range Visual Artists Thursdays, Mapleton Bowls Club

Blackall Range Woodcrafter's Guild secretary.brwg@gmail.com

Blackall Range Zonta Club membership@zontablackallrange.org.au.
www.zontablackallrange.org.au

Bush and Beach Walking Group bushbeachwalkers@gmail.com

Hinterland Quarry Action Group T: 0416 155116 aveivers@iprimus.com.au

History Group montvillehistorygroup@gmail.com

Kureelpa & Dulong Community Hall kureelpahall@gmail.com

Mah-jong Wednesday weekly at Mapleton Bowls Club

Maleny Golf Club T: 5499 9960 gm@malenygolfclub.com.au
www.malenygolfclub.com.au

Maleny Scottish Country Dancing Monday nights, Maleny RSL Hall: 0429
654033: eshjay2010@gmail.com

Mapleton and District Community Association madca@gmail.com

Mapleton Art Thursdays Mapleton Library Community Centre. Contact:
mapletonlibrary@gmail.com

Mapleton Bowls Club T: 5445 7913 www.mapletonbowlsclub.com.au

Mapleton Bridge Club bridgeaustralia.org
mapletoncontractbridgeclub@gmail.com

Mapleton Choir Kureelpa Hall themapletonchoir@outlook.com

Mapleton Country Market countrymarket.mapleton@gmail.com

Mapleton Craft Group Wednesdays 9-12noon, Mapleton Bowls Club

Mapleton Fire Warden T: 0493 044052

Mapleton Library Community Centre mapletonlibrary@gmail.com
www.mapletonlibrary.au T 5445 7011

Mapleton Hall and Sportsground Trustees mapletonhall@gmail.com

Mapleton Men's Shed www.mapletonmenshed.org.au

Mapleton Movers Heart Foundation Walking Group T: 0417 476768

Mapleton State School Parents and Carers Association:
mapletonpandc@gmail.com

Mapleton Quilters Mondays 9-12 noon, Mapleton Bowls Club

Mapleton RSL Sub Branch Matt Dykes 0427263595 mdykes7@gmail.com

Mapleton Rural Fire Brigade First Officer T: 0428 137927, Secretary: 0499
883019

Mapleton Tennis Club mapletontennis@gmail.com
www.tennis.com.au/mapleton-tennis-club

Montville Anglican Church huesong2@gmail.com

Montville Chamber of Commerce info@montvillecommerce.com.au

Montville Masonic Lodge montville260@outlook.com

Montville Rural Fire Brigade montville.rfb@bigpond.com

Montville School P&C msspandcpresident@gmail.com

Montville St Mary's Hall stmaryshallmontville@gmail.com

Montville Tennis Club montvilletennisclub1925@gmail.com

Montville Uniting Church minister@ourcommonlife.org.au

Montville Village Association secretary.mva@gmail.com
www.montvillevillageassociation.org.au

Probus Club of North Blackall Range Secretary 0493 632703
nbrprobus@gmail.com

Range Community Gym and Fitness Centre mapletongym@gmail.com
www.rangecommunitygym.com.au

Range United Soccer Club info.rangeunited@gmail.com

St Mary's Anglican Church Montville stmarysmontville@gmail.com

Sunshine Coast U3A u3aoffice@u3asunshine.org.au

The Flaxton Craft Group lkathypatterson@gmail.com

The Range Community Kindergarten www.rangekindy.qld.edu.au
rangekindergarten@bigpond.com

Wildlife Volunteers Association Inc (WILVOS) Hotline 5441 6200
www.wilvos.org.au

Schools

Blackall Range Independent School officel@brschool.com.au T: 5476 4301

Mapleton State School principal@mapletonss.eq.edu.au T: 5456 3333

Montville State School admin@montvilless.eq.edu.au T: 5452 1333

Facebooks

Mapleton Community Facebook page

www.facebook.com/groups/mapletonqueensland/

Montville Community Facebook page

www.facebook.com/groups/780987252874906/

Flaxton Community Facebook page

www.facebook.com/groups/388815358233538

Mapleton Library Community Centre Facebook page

www.facebook.com/p/Mapleton-Community-Library-100064769136195/

Happenings – Montville and surrounds email newsletter

Subscribe: www.montvillevillageassociation.org.au/subscribe-to-happenings/ Editor.mvahappenings@gmail.com

If your organisation is not listed, please let us know.

Many thanks, nita

mapletonqueensland@gmail.com



Community brochure and poster display on the verandah of the Mapleton Library Community Centre is a convenient place to promote your organisation.

If you are looking for information, check out this collection.

Currently overflowing with posters and brochures—there is something for everyone.



Helping Children Walk with Pride

Together we empower children to reach their potential.

RING PULLS



Alone we can do little,
Together we can make a
huge difference to
someone's quality of life.

Drop off at the
Mapleton Bowls Club
Mapleton Library Community Centre





RECYCLING IN MAPLETON

SPECTACLES are collected by Lions from the Mapleton Library Community Centre.

CANS and BOTTLES Containers for Change
Mapleton Bowls Club - There is a convenient collection point which is a wheelie bin placed near the entrance. Bins can be distinguished from others by its bright blue lid.

Mapleton State School P & C. All your donations would be gratefully received and will go towards resources for our school and students.

Mapleton Men's Shed These may be left in the bins in front of the storage shed in Mapleton Forest Drive.

MOBILE TELEPHONES Roger Loughnan Real Estate, corner Post Office Road and Obi Obi Road Mapleton, is a registered drop off location for people to donate their old working phones with chargers etc. The staff will deliver these to DVSafe Phone.

Also place in any Lion's spectacle box at the Mapleton Bowls Club and the Mapleton Library Community Centre.

BLISTER PACKS Mapleton Library Community Centre verandah

USED PENS Mapleton Library Community Centre verandah

RING PULLS from aluminium cans

Lions will forward these for a mobility device for children. Container on the Library Community Centre verandah



YARN LIBRARY Sewing, knitting and embroidery items to swap—containers inside the Library Community Centre

PLANTS There are stands outside the Mapleton Library Community Centre where you can leave plants for someone else who might like them.



PROCEDURES FOR RANGE AND HINTERLAND POPUP COMMUNITY NEWS MANAGEMENT

The Range and Hinterland PopUp Community News was launched in 2016. The News has gone through many changes with no one organisation controlling the News—it is truly a community news: for the community by the community. Auspiced by the Mapleton Library Community Centre since 2016 which provides insurance, financial support and much more.

The News offers opportunity to promote events and provide information to all community groups across the Range and the Hinterland
Thank you everyone.

The Range and Hinterland PopUp Community News is edited, published and distributed by volunteers.

There will be no discussion or correspondence on matters pertaining to the Range and Hinterland PopUp Community News.

- All articles for the Range and Hinterland PopUp Community News are to be sent to mapletonqueensland@gmail.com
- If it is important to have an article included in a specific edition, forward article as early as possible. Generally the cut off time for publication is noon Tuesday each week but as this is a fully volunteer publication inclusion is not guaranteed.
- Articles can be emailed at any time. Please include contact name and contact details.
 - All articles are to be sent digitally unless otherwise pre-arranged.
- Pop up Community News is published weekly but open to review at any time. A short holiday over Festive Season each year to give the volunteers a well earned holiday.
 - Currently Thursday night for distribution is the target time.
- No lost animals, political, religious, personal opinions or missing person notification will be published.
 - Negative or derogatory comments will not be published.

Email mapletonqueensland@gmail.com requesting guidelines.

Anyone wishing to receive the Range and Hinterland PopUp Community News, send your email address to mapletonqueensland@gmail.com

Anyone wishing to cease receiving the Range and Hinterland PopUp Community News, send your email to mapletonqueensland@gmail.com
Disclaimer: The Editor and Team assumes no responsibility or liability for the content of this publication.

Keep informed through the web and social media
www.facebook.com/groups/mapletonqueensland/

www.mapletonlibrary.au

Remember, if you wish to receive the

**RANGE AND HINTERLAND
POPOP COMMUNITY NEWS**

Email mapletonqueensland@gmail.com

Current circulation over 4,500

