

RANGE AND HINTERLAND POPOP COMMUNITY NEWS

Weekly News

A community service since 2016

27 November 2025

Issue 469

WHAT IS ON THIS WEEKEND?

** 29 November-7 December: Sculpture on the Edge

DETAILS INSIDE THIS EDITION



Sculpture ON THE EDGE

Sat 29 November - Sun 7 December 2025

Flaxton Gardens

www.sculptureontheedge.com.au

JOIN US FOR SCULPTURE ON THE EDGE

Where Art & Nature Collide

Arts Connect Inc's annual event, Sculpture on the Edge, is back for its 16th celebratory year—and it's set to be bigger and more inspiring than ever. This 9-day creative feast of art and food, held from 29 November to 7 December 2025, takes place in the natural beauty of Flaxton Gardens on the stunning Sunshine Coast. The exhibition features a vibrant display of indoor and outdoor sculptures, all available for purchase, designed to ignite your imagination, inspire your creativity, and delight your senses. Thanks to the generous support of our sponsors, donors, and event partner Flaxton Gardens, this much-loved cultural event offers something for everyone and promises to be a not-to-be-missed experience for locals and visitors alike.

Jump the Queue!

Ticket prices \$15 per adult and \$7.50 per senior or concession holder. Tickets can be used for any one day from Saturday 29 November to Sunday 7 December. You choose when to visit!

<https://sculptureontheedge.com.au/>



469th EDITION CONTENTS

Sculpture on the Edge
Keep your Tummy Happy
Back to School
Montville Carols
Nambour Market
Forum Theatre Event
Maleny Christmas Festival
Ring Pulls
QCCC
Mapleton Country Market
40th Celebrations
Australia Birdlife

Development Applications
Creating a Frog Friendly
Garden
Fauna and Flora
Community Services
Date Claims
Repeat Articles
Local Organisations'
Contacts and more

KEEPING YOUR TUMMY HAPPY THIS CHRISTMAS

*By Natalie, your local Pharmacist at Lindner Family Pharmacy,
Mapleton*

The festive season is a time for joy, good company, and of course—plenty of delicious food. But with all the indulgence and routine changes, it's also a time when many people experience tummy troubles. Here are some friendly tips to help keep your gut feeling comfortable throughout the celebrations:

Enjoy treats in moderation

Christmas puddings, chocolates, and hearty meals are part of the fun, but large portions can leave you feeling uncomfortable. Pace yourself and listen to your body.

Stay hydrated

Between hot drinks, festive cocktails, and busy days, water can be forgotten. Staying hydrated helps keep digestion running smoothly. If you overdo it or feel a bit dehydrated, an oral rehydration product like *Hydralyte* can help replenish lost fluids and electrolytes.

Keep your body moving

A gentle walk after meals can support digestion and reduce feelings of fullness or bloating.

Don't forget your fibre

Rich foods can sometimes slow things down. Including fruits, vegetables, and whole grains can help maintain regularity. For those who occasionally struggle with constipation, products like *Movicol* can be useful—just ask your pharmacist whether it's right for you.

Be prepared for indigestion

Heartburn and indigestion are common this time of year. An antacid or reflux-relief product such as *Gaviscon* may help ease discomfort when used as directed.

Make time to rest

Stress can affect your digestive system just as much as food. Carve out moments to unwind and enjoy the season at a comfortable pace.

If you need personalised advice about digestive symptoms or choosing suitable over-the-counter products, feel free to pop in and speak with us—we're always here to help.

Wishing you a healthy, happy, and tummy-friendly Christmas!



BACK TO SCHOOL

**MAPLETON STATE SCHOOL BOOK PACKS
TAKE THE HASSLE OUT OF SCHOOL BOOK
PACK SHOPPING**

**MAPLETON POST OFFICE WILL PICK AND
PACK YOUR SELECTIONS READY FOR PICK
UP AFTER THE 12th JANUARY, 2026 AT YOUR
CONVENIENCE**

**JUST DROP YOUR BOOK PACK LIST INTO
THE POST OFFICE AND WE WILL DO THE
REST**

NO PAYMENT REQUIRED UNTIL PICK UP

OTHER LOCAL SCHOOLS CAN BE ACCOMMODATED ON
REQUEST

COPIES OF MAPLETON STATE SCHOOL BOOK LIST AVAILABLE
AT THE POST OFFICE

Montville Carols *On The Green*

6 pm - 8 pm

Wednesday December 17

Christmas Carol Favourites with

- ★ The Salvation Army Band
- ★ The Mapleton Choir
- ★ Kristy Turner + Garry Sando

FREE Sausage Sizzle 6 - 7 pm.

Face Painting + Bubbles

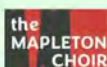
GIANT Christmas Cracker tug-o-war!

Bring your picnic rug and join us for a festive evening under the stars!

Enjoy a sausage sizzle from 6:00 pm, then settle in for the main event starting at 7:00 pm.

There's bubbles, face painting, and a GIANT Christmas cracker for the kids — plus plenty of joy and community cheer for everyone!

SPONSORS:



Proudly supported
by the Grants Program





ALL DAY CHRISTMAS IN THE SQUARE!

Nambour was the capital of the shire for over a century but it's no secret the centre has taken some knocks. More empty shops, more people sleeping rough....it can make the town feel a bit confronting if you haven't been in for a while.

The Nambour Town Square Markets are trying something small but positive in the middle of all this and we're just asking for a bit of help from those of us who can give it. On Thursdays 4, 11 and 18 December, the markets will run all day (9am-7pm) in Nambour's Town Square on the corner of Short and Lowe Sts. It's a full all day Christmas market instead of just the usual morning. There'll be good quality produce, plants, handmade gifts, toys; all with plenty of shade and level access from nearby parking. It's very much set up for a relaxed visit rather than a crowded chaotic occasion.

With families, stallholders, volunteers and just normal people walking around is when Nambour feels at its happiest. A steady stream of visitors who park nearby, wander through the square, then step into a café or shop, does more for the town than any number of reports or plans.

The ask is simple. If you usually bypass Nambour and head straight down the highway or take the long drive to 'the plaza'....consider dtopping downtown on one of those Thursdays instead. Come for some shopping, walk through the markets, buy a few Christmas presents and then head home when you're ready.

For the businesses still hanging on in the centre, and for the people doing it tough on those streets, the presence of calm, ordinary shoppers makes a real difference. An hour or two in Nambour this December is a very practical way to help.



Kiosk Bookings

Our kiosk, located right on bustling Maple Street in Maleny, is available for hire to both organisations and individuals.

Whether you're looking to promote your cause, raise funds, or simply connect with the local community, this compact yet versatile space is a perfect solution.

For more information please call the office on 5429 6043 or email admin@malenycc.org

Women Speak

Forum Theatre Event Invitation

Join us for an exciting theatre event influencing system's change in domestic and family violence

Ticket Prices:

Waged - \$20
Unwaged - \$10

PERFORMANCES IN 3 LOCATIONS

CALOUNDRA

11 am Friday 28th November
Library+ Caloundra
1 Ormuz Avenue, Caloundra



Click [here](#) to register



MALENY

6:30pm Wednesday 3rd December
Maleny Community Centre
23 Maple Street, Maleny



Click [here](#) to register

NAMBOUR

10am Thursday 4th December
Refocus Aboriginal and Torres Strait
Islander Corporation
246 Petrie Creek Road, Rosemount



Click [here](#) to register

Women Speak is a partnership between women with lived experience of domestic and family violence, Caloundra Zonta Club and Caloundra Community Centre. This event is supported by Queensland Shakespeare Ensemble and Sunshine Coast Council.



JOIN US FOR THE
MALENY
CHRISTMAS
FESTIVAL
12TH DECEMBER 2025
5PM TO 9PM
Maple Street, Maleny
Main Street Stores Open

Market Stalls Carols A visit from Santa

Jumping Castle Food Stalls

FOR MORE INFO PLEASE
VISIT THE MALENY
CHAMBER OF COMMERCE
FACEBOOK PAGE.



HELPING CHILDREN WALK WITH PRIDE

Together we empower children to reach their potential.



Bags of ring pulls collected at the Mapleton Library Community Centre.

Every ring pull you collect over Christmas will contribute to another mobility device for a child.

RING PULLS



**Alone we can do little,
Together we can make a
huge difference to
someone's quality of life.**

**Community Stall
Mapleton Bowls Club
Mapleton Library Community Centre**



Mapleton Library
Community Centre



LIONS
INTERNATIONAL



MAPLETON
BOWLS CLUB



MAPLETON

Weekly Update – Final Week of School Camps!

This weekend we're privileged to host two significant groups: a church family camp from Brisbane, and a special gathering of Traditional Custodians and Elders of the Blackall Range. This latter group returns to reconnect with Country—a powerful moment of cultural significance and community restoration. We're honoured to provide space for these meaningful gatherings.

Next week marks the final chapter of an enormous year of school camps at QCCC Mapleton. From Monday to Wednesday, we welcome a Grade 4 cohort from Brisbane who will be celebrating the end of their school year with adventure, friendship, and plenty of memories. They'll be followed Wednesday to Friday by another Brisbane school bringing their Grade 5 students for a final burst of camp fun to round out Term 4.

With that, we close the curtain on a record year of school camping, with thanks to all our incredible staff and the thousands of students who've passed through our gates in 2025.

Date Claim: QCCC Mapleton Open Day – Saturday 6th December from 3pm!

Don't forget to join us for our Community Open Day on Saturday 6th December. Come and experience everything QCCC Mapleton has to offer—our outdoor activities, fresh pool complex, the outdoor movie screen, and some warm summer hospitality. It's a chance for the whole community to relax, explore, and enjoy this amazing place we call home. Flyer with a QR code for RSVPs is also in the PopUp Community News.

FOLLOW QR CODE TO REGISTER



PH: 07 5456 3600



QCCC

COMMUNITY OPEN DAY

6TH DECEMBER 2025 12PM – 8PM

FOOD FOR PURCHASE AT DINING HALL 12PM - 8PM
OR BYO FOOD/PICNIC

RESORT POOLS OPEN ALL DAY

PICKELBALL & VOLLEYBALL COURTS ALL DAY





TRIBALLINK ACKNOWLEDGEMENT OF COUNTRY 2:30PM

INSTRUCTOR RUN ACTIVITIES: 3PM - 6PM

- CLIMBING WALL
- ARCHERY TAG (MAIN OVAL)
- TRIBALLINK ACTIVITIES (ARENA/PAVILION NEAR LAKE)



TribalLink

70 OBI OBI RD MAPLETON



MAPLETON COUNTRY MARKET

Our Pre Christmas Country Market and last for the year was extremely busy with Santa (aka Brian Hansen from the Mapleton Rural Fire Brigade). The market is now in recess till February 28th 2026. We would like to thank our MADCA Sub Committee, all our community groups, volunteers and you the patrons for a wonderful year. Wishing you all a Merry Christmas and may your days be filled with warmth of family, the cheer of friends, and the promise of a new year full of hope, joy and peace.

Kind regards Paula Wright and Donna Klease (Convenors)

Photographs: Conne and Santa, Chris with his grandson and Santa.



You are invited

Celebrating 40 Years of Service

Mapleton Library Community Centre – Powered by Volunteers

Join us as we celebrate **40 wonderful years** of dedicated volunteer service in the community.

Date: Sunday, 7 December 2025

Time: 4:30pm

Place: Mapleton Library Community Centre

Enjoy an early evening of **wine, nibbles, music, and memories** as we raise a glass to the countless hours, passion, and care that volunteers have devoted to our Centre over the years.

Let's toast to the past, and the people who continue to make the Library Community Centre such an important asset to the community.

RSVP: mapletonlibrary@gmail.com by 5 December

Dress: Smart casual



Telephone: 07 5445 7011
Address: PO Box 206, Mapleton 4560
E: mapletonlibrary@gmail.com
W: www.mapletonlibrary.au

Assisted by the Sunshine Coast Council and other community organisations

Event sponsors:



BELLA VISTA ITALIAN RESTAURANT
MAPLETON

The Stolen Painting

13 December: 3pm and 7pm

91 mins – France – Drama 
(Coarse language)

MALENY COMMUNITY CENTRE

Parisian art auctioneer André Masson, played by Alex Lutz, learns of an original painting by Egon Schiele, the fin de siècle Austrian Expressionist. Known only through its prints, *Wilted Sunflowers* has been long since lost—until now. Although sceptical, André agrees to appraise the piece.

Accompanied by Bertina (Léa Drucker), his ex-wife and art valuer, he travels to the gritty industrial town where its new owners live. Upon viewing the work, André and Bertina immediately declare it to be authentic. Its provenance, however, proves murky—its former owner collaborated with the Nazis during WWII. Then Bob Wahlberg (Doug Rand) appears, representing the painting's rightful heirs. Inspired by real events, *The Stolen Painting* is 'a sophisticated and compelling character study and mystery.' Jason Di Rosso, *ABC Radio National*



MATINEE SCREENING

Doors Open at 2:30 pm for licensed bar, tea/coffee, slices
Movie Starts at 3:00 pm

EVENING SCREENING

Doors Open at 6 pm.

Movie starts at 7:00 pm for licensed bar, tea/coffee, slices
BYO nibbles, meals or restaurant takeaway (Tables provided)

THIS EVENT GOES ON SALE 30 NOVEMBER

<https://malenyfilmsociety.au/project/the-stolen-painting/>



BIRDLIFE PHOTOGRAPHER OF THE YEAR

Preening Ones Feathers by Angela Farnsworth

Why this image won: a note from our judges

"This image stood out as these much-maligned birds are often overlooked. The image is perfectly composed, with the dark tones in the feathers never losing detail. It's refreshing to see a Brush-turkey photographed in such an endearing way." — Angela Robertson-Buchanan (Judge)

"The red neck of the Brush-turkey stands out against the black background and so draws the viewers eye into the essence of the subject. The eye is matching the background, and the textures enhance the ugly beauty of the Brush-turkey. Although the feathers are black there is a difference to the background and there is a lot of detail in those dark tones." — Peter O'Brien (Judge)

"At the start of this competition I would not have envisaged a Brush-turkey as being the subject of the winning image. The photographer has captured the bird preening in a unique and compelling way. While the image is dark, the detail is good and the neck and head, responsible for the activity, stand out beautifully." — Gary King (Judge)

"An image that stood out from the crowd, displaying intricate feather detail and a stark contrast of red against black in a striking composition, drawing attention to a beautiful dark liquid eye. Soft glowing light separates black feathers from a black background and along with the partially hidden face, create a sense of mystery and emotion. A common bird photographed in a stunning and unique way." — Melissa Zappelli (Judge)

<https://www.birdlifephotoaward.org.au/>



Recent Development Applications in Divisions 5 and 10

This is an initiative of Pop Up Community News aimed at providing information and heightened awareness as to developments in our region. Hopefully the information will provide a spring board should anyone wish to dive deeper into any specific application.

Using the link: <https://developmenti.sunshinecoast.qld.gov.au/> or entering "development i sunshine coast" into a browser will take you to the Development i home page. Click on "Application Search" and enter the application number.

Select "Details" if you want to dive deeper. The supporting documents can typically be downloaded or viewed by selecting "Application Documents" in the right hand section of the screen.

In the listings below, typically a brief editorial comment is provided after each application description. These are shown in *italics*.

DIVISION 10:

Lodged: 17/11/2025 DA#: MCU25/0326 & OPW25/0521

19 Stevens St YANDINA - Shops, Office, Healthcare Services, Indoor Sport & Recreation , Earthworks, Landscaping, Stormwater, Car Parking & Access - GJ & MR Pty Ltd - Alan Holliday Pty Ltd. *Indoor Gym and 5 commercial tenancies spread over 3 free standing buildings, plus car parks.*

Lodged: 18/11/2025 DA#: MCU21/0327.02

14 White Fig Pl BURNSIDE - Minor Change to Development Approval - Material Change of Use - Dual Occupancy x 10 - Aushomes - Suncoast Building Approvals. *To quote: "Proposed dual occupancy located outside of the indicative building envelope and not a split level or elevation construction where beyond the rear extent of the nominated envelope."*

Lodged: 20/11/2025 DA#: MCU25/0330

68 Kromes Rd NORTH ARM - short-term accommodation - Tusk Australia Pty Ltd - Project Urban. *Presents as 5 X 2 bed cabins on poles, skillion roof on a large lot.*

Lodged: 21/11/2025 DA#: MCU25/0333

14 Noel St NAMBOUR - Secondary Dwelling - Project BA. *2 Bed 1 bath secondary dwelling with an attempt to create a period look.*

Lodged: 21/11/2025 DA#: MCU25/0334

132 Howard Street NAMBOUR - Outdoor Sales (Motor Vehicle Sales Yard) - Sunny Coast Cars Pty Ltd - Ferris Town Planning. *Application to place a demountable office on the lot.*

DIVISION 5:

Lodged: 19/11/2025 DA#: OPW25/0524

28 Rowan Lane MOUNT MELLUM - Vegetation Clearing - Ryan Jeffrey & Georgia White. *Removal of slash pine grove covering most of the lot.*

Lodged: 20/11/2025 DA#: OPW25/0529

Nambour Christian College 2 McKenzie Rd WOOMBYE - Landscaping - Nambour Christian College Ltd - Covey Associates Pty Ltd. *Mainly carpark and landscaping.*



13 December

CREATING A WILDLIFE FRIENDLY GARDEN

To create a **frog friendly garden** focus on providing a cool, moist, and protected habitat with a permanent, clean water source, native plants, and shelter, while avoiding chemicals and predators.

Key Components

- ◇ **A safe water source (pond):** This is essential for breeding and hydration.
- **Location:** Choose a spot that gets morning sun but is shaded during the hottest part of the day (around 50-75% shade is ideal). Place it away from house windows, as calling frogs can be loud at night.
- **Design:** Vary the depth, with a deep end of at least 50 cm to keep the water cool in summer and shallow, sloping edges for easy entry and exit. Use a non-metal container, plastic pond liner, or an old bathtub sealed with silicone.
- **Water Quality:** Fill the pond with rainwater if possible. If using tap water, let it stand in an open container for 5–7 days to allow the chlorine to dissipate. Never use fertilisers or pesticides near the pond.
- **Mosquito Control:** To manage mosquito larvae, you can install a small water pump to gently break the surface tension, or introduce a few small native fish like Pacific Blue-eyes, which will eat the larvae without decimating all the frog eggs and tadpoles.
- **Shelter and Habitat:** Frogs need places to hide from predators and harsh sunlight.
- **Ground Cover:** Use thick leaf litter, logs, branches, rocks, and upturned flower pots for hiding spots. Allow some wild, mulched areas to develop in your garden.
- **Multi-layered Planting:** Incorporate ground covers, grasses, shrubs, and small trees to provide shade and protection. This diverse structure also attracts insects for food.
- **Minimise light pollution:** Turn off bright outdoor lights at night, as they can disrupt a frog's hunting and resting.

Native Plants:

- **Pond Edges/Bog Areas:** *Lomandra longifolia* (Mat Rush), *Carex* spp. (Sedges), *Juncus usitatus* (Common Rush), *Viola hederacea* (Native Violet), *Alpinia caerulea* (Native Ginger).
- **Submerged/Deep Water:** *Marsilea* spp. (Nardoo), *Villarsia exaltata* (Marsh Flower), *Baumea articulata* (Jointed Twig-rush).
- **Surrounding Garden:** *Acmena smithii* (Lilly Pilly), *Callistemon* spp. (Bottlebrush), *Grevillea* spp., and *Banksia* spp. help attract insects and provide additional cover.
- **Local text:** The Range and Hinterland Gardening book is a current and useful resource.

Pest and Predator Management:

- **Chemical-Free Zone:** Frogs absorb water and chemicals through their sensitive skin, so strictly avoid all pesticides, herbicides, and fertilisers in and around your frog habitat.
- **Pets:** Keep cats and dogs away from the frog area, as they are significant predators.
- **Cane Toads:** If you have cane toads, make your pond edges at least 50 cm high or use dense, spiky plants like *Lomandra* as a barrier to deter them from entering the water to breed. Learn to identify and humanely remove cane toad eggs (long, stringy strands) from the water.

Final Note

Be patient. If you build the right habitat, local frogs will find it on their own. Never introduce frogs or tadpoles from other areas, as this can spread disease. You can use the FrogID app to identify which species live in your area and record your sightings.

<https://www.museum.qld.gov.au/learn-and-discover/apps/frogid-app>

Common and Widespread Native Frogs

These species are frequently encountered across various habitats, including urban areas, in south east Queensland.

- **Common Green Treefrog** (*Litoria caerulea*): One of Australia's largest and most well-known frogs, with a variety of green shades.
- **Eastern Sedgefrog** (*Litoria fallax*): A common, small, and slender species often found near water bodies and garden ponds.
- **Striped Marshfrog** (*Limnodynastes peronii*): Identified by its bold, dark longitudinal stripes on a light brown or grey-brown back.
- **Common Eastern Froglet** (*Crinia signifera*): A small, abundant ground-dwelling frog known for its clicking call.
- **Great Barred Frog** (*Mixophyes fasciolatus*): A large, powerful frog found along stream banks.

Other Notable Species

- **Orange-eyed Treefrog** (*Litoria chloris*)
- **Graceful Treefrog** (*Litoria gracilentata*)
- **Eastern Laughing Treefrog** (*Litoria rothii*)
- **Emerald Spotted Treefrog** (*Litoria peronii*)
- **Spotted Grassfrog** (*Limnodynastes tasmaniensis*)
- **Scarlet-sided Pobblebonk** (*Limnodynastes terraereginae*), also known as the Northern Banjo Frog
- **Ornate Burrowing Frog** (*Platyplectrum ornatum*)

Conservation Status

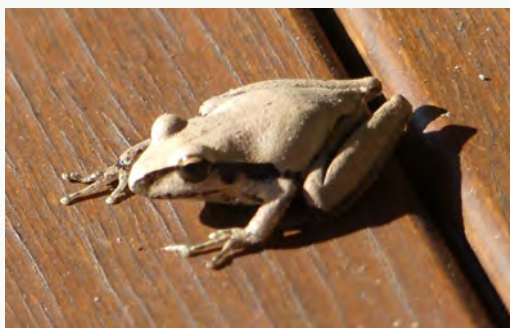
Several native species in the region are listed as vulnerable or endangered:

- **Tusked Frog** (*Adelotus brevis*) - Vulnerable
- **Wallum Sedgefrog** (*Litoria olongburensis*) - Vulnerable (EPBC and NCA status)
- **Wallum Froglet** (*Crinia tinnula*) - Vulnerable
- **Fleay's Barred Frog** (*Mixophyes fleayi*) - Endangered (EPBC and NCA status)
- **Giant Barred Frog** (*Mixophyes iteratus*) - Vulnerable (EPBC and NCA status)
- **Red-and-yellow Mountainfrog** (*Phyllorhina kundagungan*) - Endangered (EPBC and NCA status)

Identification Resources

For more detailed identification, the Queensland Museum provides resources on local species. You can also use the FrogID app to help identify frogs by their unique calls and contribute to national monitoring efforts.

Note that the **Cane Toad** (*Rhinella marina*) is an introduced species and a major threat to native wildlife.



Above: Striped rocket frog
Top right: Peron's tree frog
Lower right: Broad palmed rocket

Grow Australian Plants

LOCAL

Callerya megasperma

Native wisteria

This twining vine is native to northern coastal NSW and southern Queensland, so suits sub-tropical areas. It bears large trusses of purple pea flowers in late winter to spring, which resemble the exotic wisteria, but this vine is an evergreen.

It has handsome glossy leaves, so is attractive even when not in flower.

It is a good butterfly attracting plant.

It can grow tall, scrambling to the top of trees in the wild, but can be controlled with regular pruning.



All images Sue Bennink



Gardening Book

Selling across the Sunshine Coast and south to Brisbane, and north to Gympie.

A useful resource for new and experienced gardeners living in sub-tropical regions.

\$25

Available: The Barn on Flaxton, La Botiga, Mapleton Post Office, Mapleton Library Community Centre, Rosetta Books Maleny, Maleny Hardware and Rural Supplies.

Leifer Publishing

This locally produced text features local species that will attract wildlife to your garden.

AUTHORS ARE GIFTING ALL PROFITS TO THE COMMUNITY via Montville Village Association and Mapleton Library Community Centre

LOCAL

FOREST KINGFISHER

Todiramphus macleayii

Forest Kingfishers are moderately abundant. They are often seen sitting motionless on a telegraph wire or bare branch, staring down intently at prey. They feed on invertebrates such as caterpillars, spiders and grasshoppers, and on small reptiles, frogs, tadpoles and the occasional worm.

They are found in Indonesia, Papua New Guinea, The Solomon Islands and coastal northern and eastern Australia. In our region they are commonly found in open sclerophyll forest with a patchy or sparse understorey. They favour watercourse vegetation and the margins of swamps and billabongs. They may also be found in mangroves, farmlands and beaches; however, they require forest and woodland for breeding.

The Forest Kingfisher is a small to medium 19-22cm long predominantly blue and white bird. Its blue head has a white spot on each side of the forehead. The sexes are similar except that the male has a complete white collar while on the female it is incomplete. Immatures are like adults but slightly duller and have an incomplete white collar.

Their voice is a series of rapidly repeated high-pitched notes - *kee kee kee-kee-kee*

Breeding occurs in Aug-Dec mostly in a nest in a neat burrow in a termite mound 2-15 m above ground in a tree. Insulation within the termite mound keeps the eggs warm for fairly long periods cutting the time the parents need to spend on incubation.

Thank you Eric Anderson

Images: Below top: Adult Male Forest Kingfisher showing white spot on forehead

Below lower: Adult female Forest Kingfisher showing incomplete white collar



Community Service

JP SERVICE

Monday mornings from 8:30am to 11:30am without an appointment at the Mapleton Library Community Centre.

Or Thursday mornings 9am to 11am.

Telephone 5445 7182 for a booking in Mapleton.

WELCOME PACK FOR NEW RESIDENTS

Are you a new resident?

**Collect your pack from the
Mapleton Library Community Centre**

Borrowing hours: 1pm to 4pm week days
9am to 12noon Saturdays

What does the pack include?

- Brochures promoting community organisations
- Range Popup Community News - a free weekly news for everyone with information about the events in your neighbourhood
- List of community organisations in Mapleton, Flaxton and Montville
- Zonta Business Directory
- Recent publications such as the History of the Mapleton Bowls Club

Also available at the COMMUNITY STALL at the monthly Mapleton Country Market.

MAPLETON RURAL FIRE BRIGADE

Monthly Training: 5:30pm on the 2nd Tuesday of Month

Monthly Meeting: 5:30pm on the 3rd Tuesday of Month

First Officer (all operational matters): 0428 137927

Fire Warden (fire permits, safety checks): 0499 778806

Secretary (new members, administration): 0499 883019

Website: <https://www.facebook.com/mapletonruralfirebrigade/>

E-Mail: MapletonRFB@gmail.com

Address: 37 Obi Obi Road, Mapleton 4560

Postal: PO Box 366, Mapleton 4560

Following the recent Annual Meeting the above details are current.

ST. MARY'S ANGLICAN CHURCH

On the green, Montville

Sunday Eucharist at 8am

Wednesday Meditation with Maureen 9am

For general enquiries contact Carole Phillips at 5445 7839

Baptisms and weddings enquiries welcome.

Parish Office: 07 5499 9130

Email: maleny@anglicanchurchsq.org.au

Montville Uniting Church

Services are held each Sunday at 8.15am when a combined service is held at Maleny Uniting Church at 9.45pm. All welcome.

Minister: Rev Nathan Barton

E: minister@ourcommonlife.org.au

M: 0429 632527

The church is open as a Reflection Gallery every day from at least 10am till 3pm.

Date Claims

25 November - 10 December Zonta 16 Days of Activism

29 November—7 December Sculpture on the Edge, Flaxton Gardens.

3 December Twilight Bowls Challenge, 4pm, Mapleton Bowls Club.

3 December Forum Theatre Event, 6:30pm, Maleny.

4, 11, 18 December Nambour Town Square Markets, 9am-7pm.

5 December Mapleton Bingo, 9:30-11:30am, Mapleton Library Community Centre.

6 December Community Open Day, 12Noon-8pm, QCCC.

6 December Montville Christmas Market 4pm-7:30pm.

7 December Celebrating 40 years of Service, 4:30pm, Mapleton Library Community Centre.

7 December Yandina Community Christmas Carol, 1pm-7pm.

10 December 'The Shambles', 2pm, Montville.

10 December Twilight Bowls, 5pm, Mapleton Bowls Club.

11-14 December A Christmas Carol, Woombye.

12 December Maleny Christmas Festival 5pm-9pm.

12 December Christmas Concert, Maleny RSL 6:30pm.

14 December Kim's Christmas Concert St Georges 2 Walker Drive Maleny 2pm Sunday December 14, free Christmas nibbles and raffle.

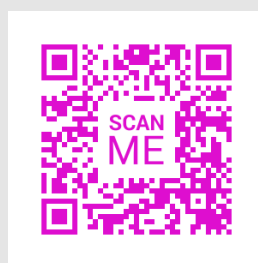
17 December Montville Carols, 6pm-8pm.

Hinterland Music Club, 2nd Saturday each month, Big Shed, Pioneer Village, Bryce Lane, Maleny.

2026

14 February Lovers of Books, Mapleton Library Community Centre.

Disclaimer: The Editor and Team assume no responsibility or liability for the content of this publication.



MAPLETON BOWLS CLUB

TWILIGHT BOWLS CHALLENGE

Join us for an evening of fun, friendly competition, and community spirit!

Event Details:

- ✓ Short, social game – 8 ends, 2 bowls
- ✓ Adults: \$5 (includes game + sausage sizzle)
- ✓ Children: FREE

WEDNESDAY, 3RD DECEMBER
STARTS 4:00PM

GOOD TIMES, GOOD FOOD, GREAT FAMILY FUN

Bring your family, friends, and good vibes for a relaxed evening on the green.
New bowlers welcome – we'll help you get started!
Enquiries contact Penny: 0447 710 194 or Mark: 0439 549 213



MONTVILLE CHRISTMAS MARKET

Saturday 6 December 2025, 4:00pm - 7:30pm
Montville Village Hall, Main Street, Montville

- 'Sip & Shop' market event
- Santa visits from 6:15pm - children can meet Santa and take away a treat
- Face painting 4:30pm to 6:30pm
- Kids activity - painting their own Ceramic Gnomes and Christmas decorations
- Family Disco - 5.15pm to 6.00pm
- Live music - Ruba Tuba; Christmas Carols; Maleny Ukuleles and Harp Duo
- Festive food
- Christmas shopping
- Gift wrapping

The market is indoors, but there will be space on the Village Green to sit and enjoy the evening. You can also bring a blanket to sit on while waiting for the Christmas lights to be turned on at around 7pm.





Yandina Community Christmas Carols



7th December 2025

1pm - 7pm

Yandina State School



Fireworks
7pm

Santa visit * Markets * Food Trucks * FREE Entertainment * Raffle

YANDINA COMMUNITY CHRISTMAS CAROLS

The Yandina Community Christmas Carols brings families and friends together for a joyful, relaxed celebration of the festive season.

From 1pm, enjoy performances from local school choirs, musicians and community groups, along with free kids activities including face painting and petting zoo, local markets, food trucks, and a special visit from Santa with support from the local Rural Fire Brigades. The evening will conclude in a fireworks display at 7pm.

This FREE, family-friendly event is volunteer-run and welcomes everyone.



FISHTALES PRESENTS

Candlelit Dinner

First Wednesday of every month

5th Nov | 3rd Dec | 7th Jan

Exclusive 3-Course Set Menu

Complimentary Sangria on Arrival

Intimate, candlelit dine-in experience

No walk-ins – bookings essential

\$55 per person



We invite you to indulge as our chefs showcase over 30 years of professional culinary experience. A night of delicious food, warm ambiance, and memories to savour.

FISHTALES CAFE MAPLETON, 11 OBI OBI RD, MAPLETON | BOOK: 0993 267 288

1800RESPECT.org.au
1800 737 732

Kids Helpline
1800 55 1800

Beyond Blue
1300 224 636

Lifeline
13 11 14

If you are in
immediate danger
call 000

16 DAYS
OF ACTIVISM TO
END VIOLENCE AGAINST WOMEN
25 NOVEMBER - 10 DECEMBER

www.bit.ly/ZontaBlackallRange

ZONTASAYSNO.COM

ZONTA SAYS NO
TO VIOLENCE AGAINST WOMEN
ZONTASAYSNO.COM



ZONTA CLUB OF BLACKALL RANGE INC 16 Days of Activism to End Violence Against Women

We all have the right to feel safe – in our homes, in the community, at work, as students, and online. Yet for millions of women around the world, safety is never certain. Tuesday 25 November is the International Day for the Elimination of Violence against Women, and launches the annual **16 Days of Activism** campaign. Running through to World Human Rights Day on 10 December, this movement raises awareness of a global human rights emergency - every ten minutes, a woman is killed by an intimate partner or family member. In Australia last year, it was one woman every eight days – a daughter, mother, friend or neighbour, who deserved safety, respect, and a future.

The Zonta Club of Blackall Range, and Speak Up Now - Stop Domestic and Family Violence - Maleny and Blackall Range, will be providing information including emergency services and contact numbers, at their red benches and other prominent locations across the Range [including Maleny, Mapleton, Montville, Palmwoods, Kenilworth]. By sharing information, and having open discussions, we can build safer communities.

Orange is the key United Nations colour for unifying global activities and drawing attention to women's safety. We all have a role to play. During the 16 Days of Activism, Zonta and Speak Up Now encourage you to wear orange, "orange" digital spaces, display awareness posters to spread the message, and consider

how you can continue to advocate for the end of violence against women and girls so that they are #SafeEverywhereAlways.

You can download resources from the Zonta Blackall Range Facebook page for sharing to socials, in your staff kitchen, in your business window - everywhere has impact. Together, we can and must make a difference. Every action, big or small, contributes to a culture that refuses to tolerate violence.

If you or someone you know needs support:

1800 RESPECT 1800 737 732

13YARN 13 92 76

Kids Helpline 1800 55 1800

Lifeline Australia 13 11 14

In an Emergency, call 000



MAPLETON LIBRARY
COMMUNITY CENTRE

Christmas Raffle 2025

Multi-draw prizes!

TICKETS: \$2 EACH OR 3 FOR \$5

DRAWN: 20 DECEMBER AT 11AM
MAPLETON LIBRARY COMMUNITY CENTRE

Don't miss your chance to win amazing prizes and support your local community!




Merry Christmas

SANTA'S SPECIAL MAIL BOX IS AT MAPLETON POST OFFICE

AND HE IS WAITING HEAR FROM YOU

SO WRITE TO SANTA TODAY AND YOU WILL RECEIVE A PERSONLISED LETTER FROM SANTA

REMEMBER TO INCLUDE YOUR ADDRESS

NO POSTAGE REQUIRED

Merry Christmas

Support your community with Lions Christmas Cakes & Puddings



Lions Christmas cakes, in 1 and 1.5kg sizes, and puddings are available now at Mapleton Post Office, Mapleton Chemist, Mapleton IGA, The Barn on Flaxton and the Montville IGA.

By buying 1 or 2 – one for Christmas, one to save for unexpected guests through the year, you help provide funds for Blackall Range Lions to support our community.

Prices: 1kg Cakes \$16, 1.5kg Cakes \$20 and Puddings \$16.

Just ask one of our Lions if you would like to try one of our small gluten free cakes - \$10.



Back by popular demand - the Lions' little Iced Christmas Cakes.



Available now at The Barn on Flaxton, the Mapleton Post Office, and Montville Post Office from December 1st. These 375 gram cakes have been lovingly decorated for all to share and make ideal gifts for your friends and relatives who live alone.

Numbers are limited...





Christmas Concert

Maleny RSL
Friday 12 December at 6.30pm
Presented by

Maleny Singers

All donations in support of
Maleny Rural Fire Brigade

Inspiration Choir and Caloundra Community Choir
presents

Sunday
14 December

2pm

Tickets \$25

at door or on humanitix

Christmas cheer included afterwards

Beautiful Christmas
music sung
by a choir,
with brilliant
soloists.

Directed by
Kim Kirkman



that special
Christmas
feeling



St Georges Anglican Church 2 Walkers Drive Maleny

MALENY DISTRICT PARK

Council is preparing a Concept Plan for Maleny District Park and invited community feedback on the proposed concept plan.

The Maleny District Park concept plan proposes **four distinct areas** offering a range of recreational experiences, including lookouts, play areas, a mountain bike course, and a community hub, all linked by an expanded trail network. The plan has been refined based on extensive community feedback.

Four Distinct Areas

The Maleny District Park is divided into four zones:

The Lookout: A picnic area with trails and views across the precinct.

The Bails: A gathering space near the old milking bails with lawns, picnic spots, and a nature play area.

The Hill: An adventure zone featuring a proposed mountain bike skills course, a slide, and viewing areas.

The Hub: The main activity area with a fenced dog exercise area, youth zone, sports courts, picnic areas, and toilets.

Key Features and Priorities

The plan incorporates community feedback and focuses on enhancing natural beauty and accessibility. Based on community consultation, top priorities for the first stage at "The Hub" include:

- Youth activity area
- Toilet facilities
- Primary footpath network (accessible)
- Linking trail network
- Fenced dog exercise area

Next Steps

The refined concept plan is based on community engagement from May and June 2025. The final plan is anticipated to be shared with the community in early 2026 (TBC).

More details and updates are available on the [Have your Say Sunshine Coast](https://haveyoursay.sunshinecoast.qld.gov.au/maleny-district-park) website.

<https://haveyoursay.sunshinecoast.qld.gov.au/maleny-district-park>

Project update

Maleny District Park project

We asked our community, 'Have we got it right?' for the draft concept plan for Maleny District Park.

We received almost 2,300 project site views with 132 online surveys completed and 27 email submissions.
Thank you for sharing your feedback!

Here is a snapshot of what you told us:

Area A: The Lookout

57% rated this plan 4 or 5 stars out of 5 stars.

Top 3 favourite elements:

new paths and trails (54%)

lookout area (41%)

picnic areas (43%)

Additional feedback:

- 11 said focus on other areas first
- 11 prefer minimal changes
- 8 suggested more parking
- 7 requested footpath upgrades on North Maleny Road.

Area B: The Bails

53% rated this plan 4 or 5 stars out of 5 stars.

Top 3 favourite elements:

new paths and trails (54%)

picnic areas (39%)

play space (39%)

Additional feedback:

- 11 said focus on other areas first
- 10 want larger play space with natural elements
- 7 asked for more seating including covered options

Area C: The Hill

54% rated this plan 4 or 5 stars out of 5 stars.

Top 3 favourite elements:

mountain bike skills course (50%)

new paths and trails (47%)

mega slide (46%)

Additional feedback:

- 7 said focus on other areas first
- 11 loved the mountain bike skills course and would like it expanded with, learn-to-ride and pump track for younger kids.

Area D: The Hub

58% rated this plan 4 or 5 stars out of 5 stars.

Top 3 favourite elements:

public amenities (52%)

youth activity area (52%)

new path and trails (43%)

Additional feedback:

- 47 excited for fenced dog exercise area
- 11 suggested alternative locations for dog exercise area
- 11 want us to have a closer look at traffic management and parking.

Look and feel

Just over half of the respondents (52%) felt the proposed look and feel of the plan – shaped by the character of Obi Obi Creek and the surrounding farmlands – captures the essence of the area. 25% of respondents were unsure.

Stage 1

Based on your feedback, the top five priorities for Council's budget for Stage 1 are:

1. youth activity area
2. public amenities
3. primary footpath network
4. linking trail network
5. dog exercise area.

Next steps

We will now move into phase 4 of the project. We will take these suggestions and feedback and finalise the concept for the park. Once finalised the plan will be taken to Council for endorsement.

haveyoursay.sunshinecoast.qld.gov.au/maleny-district-park

TOOTHPASTE MADE FROM HAIR?



Toothpaste "made of hair" is not currently available on the commercial market, but is the subject of recent, promising scientific research. Scientists have developed a prototype that uses **keratin**, the protein found in hair, skin, and wool, to repair tooth enamel.

Keratin Toothpaste Research

Researchers at King's College London have discovered that keratin can help stop early stages of tooth decay and potentially regrow enamel.

Mechanism: When applied to the tooth surface, the keratin forms a crystal-like scaffold that mimics the structure of natural enamel. This scaffold then attracts minerals already present in saliva (calcium and phosphate ions), leading to the growth of a protective, enamel-like coating over time.

Benefits: This method could provide a more natural, sustainable, and durable alternative to traditional dental resins and even standard fluoride treatments, which slow decay but cannot regenerate lost enamel. It could also reduce tooth sensitivity by sealing exposed nerve channels.

Availability: The scientists believe that with further development and industry partnerships, keratin-based toothpaste or a professionally applied dental gel could be available to the public within the next two to three years.

Current Commercial Toothpaste Ingredients

Existing commercial toothpastes do not contain hair or keratin as an active ingredient. Common ingredients include:

- **Fluoride:** A key ingredient (e.g., sodium fluoride, stannous fluoride) that strengthens enamel and prevents cavities.
- **Abrasives:** Gentle scrubbers like hydrated silica or calcium carbonate that remove plaque and stains.
- **Humectants:** Ingredients such as glycerin or sorbitol that prevent the toothpaste from drying out.
- **Thickening Agents:** Binders like cellulose gum or xanthan gum to achieve the desired consistency.
- **Surfactants:** Foaming agents like sodium lauryl sulfate (SLS) to help distribute the paste.

Flavorings/Sweeteners: Such as peppermint oil or xylitol to improve taste and provide freshness.

While a 'hair toothpaste' isn't available today, ongoing research suggests it could be a major future innovation in dental care.

Thank you to the resident who submitted this article.



Recent Development Applications in Divisions 5 and 10

This is an initiative of Pop Up Community News aimed at providing information and heightened awareness as to developments in our region. Hopefully the information will provide a spring board should anyone wish to dive deeper into any specific application. Using the link: <https://developmenti.sunshinecoast.qld.gov.au/> or entering "development i sunshine coast" into a browser will take you to the Development i home page. Click on "Application Search" and enter the application number. Select "Details" if you want to dive deeper. The supporting documents can typically be downloaded or viewed by selecting "Application Documents" in the right hand section of the screen.

In the listings below, typically a brief editorial comment is provided after each application description. These are shown in *italics*.

DIVISION 10:

Lodged: 06/11/2025 DA#: MCU05/0071.05

1 Old Gympie Road YANDINA - Generally in Accordance - Shopping Complex - Griffco Holdings Pty Ltd - Project Urban Pty Ltd. *Council is requesting Site Plan, Floor Plan, Roof Plan and Elevator Details from the applicant.*

Lodged: 13/11/2025 DA#: RAL25/0097 Impact Assessable

165 & 171 Burnside Rd BURNSIDE - Reconfiguration of 2 Lots into 66 Lots plus 3 Drainage Reserves and 1 Bushland Reserve - Danseur Pty Ltd - Subdivisions (Qld) Pty Ltd. *Impact Assessable. Presents as a development with lot sizes from 600M2 to 800M2 approximately, lying in the catchment of Petrie Creek. There appears to be minimum references as to the impact the development will have on the flood levels experienced from Petrie Creek.*

Lodged: 12/10/2025 DA#: MCU25/0321 & OPW25/0507

17 Whalley Creek Cl BURNSIDE - Medium Impact Industry, Caretaker's Accommodation, Stormwater, Earthworks, Landscaping, Driveway and Access - Sheaband Pty Ltd C/- Murray & Associates (QLD) Pty Ltd. *Industrial Building of approximately 732M2, with most of the remaining site carpark and hard surface.*

Lodged: 12/11/2025 DA#: POS25/0158

78 Cash Rd EUMUNDI - Reconfiguration of 1 Lot into 2 - (Lots 1 & 2 SP345599) - Urbn Town Planning . *Administrative, Approving Plans*

Lodged: 11/11/2025 DA#: OPW25/0506

Stage 5 - 41 Glenbrook Drive NAMBOUR - Electrical Reticulation and Street Lighting - Milwood Rise Developments Pty Ltd - Colliers Engineering & Design . *Relates to RAL24/0075 1 lot into 11 for a Community Title Development.*

Lodged: 13/11/2025 DA#: POS25/0192

17 Buckle St YANDINA - Reconfiguring of a Lot into 4 - SP350888 - Land Surveying Dynamics. *Administrative, Approving Plans*

Lodged: 14/11/2025 DA#: OPW25/0512

65 Elizabeth St NAMBOUR - Electrical & Street Lighting - Neubau Elizabeth Project Pty Ltd - Infinity Engineers. *Relates to RAL20/0070, reconfiguring a lot into 10 Standard Format Community Title Lots.*

Lodged: 13/11/2025 DA#: MCU25/0323 & OPW25/0517 Impact Assessable

96 Cooloolabin Rd, 14 Browns Creek Rd & Brandons Rd YANDINA - Retirement facility 268 dwellings & Waterway barrier work - Stockland Land Lease Management Pty Ltd - Project Urban. *Impact Assessable. Standard layout tightly sandwiched retirement facility including attached and detached dwellings. If interested, a viewing of the application is appropriate.*

DIVISION 5:

Lodged: 10/11/2025 DA#: POS25/0210

22 Northview Place, Woombye - Duplex Lots 1 & 2 on SP357070 - Surveyors Co. *Administrative, Approving Plans.*

Lodged: 13/11/2025 DA#: OPW25/0510

9 Cossins Rd NORTH MALENY - Electrical Reticulation - Millwell Services Pty Ltd. *Relates to RAL22/0055, reconfiguring 1 lot into 4.*

Lodged: 14/11/2025 DA#: OPW25/0513

56 Treeline Cct MOOLOOLAH VALLEY - Stormwater & Landscaping - Indiana Chipperfield. *Crossover requires potential relocation of a tree to complete.*

Lodged: 17/11/2025 DA#: POS25/0211

114 and 134 Nicklin Road Palmwoods - Survey Plan SP337557 (2

Lodged: 17/11/2025 DA#: POS25/0211

114 and 134 Nicklin Road Palmwoods - Survey Plan SP337557 (2 Lots into 2 Lots) - Eagle Surveys Pty Ltd. *Administrative, Approving Plans.*

Lodged: 14/11/2025 DA#: OPW25/0515

9 - 11 Palm St MALENY - Landscaping - Greenfort - LAUDink Pty Ltd. *Relates to MCU24/0051 extending an existing retirement*

ATTRACTING WILDLIFE TO YOUR GARDEN

This week providing shelter

You can provide shelter for small animals in your garden by adding natural habitat features like log piles, dense plants, and rockeries, or by installing purpose-built structures such as nest boxes, bug hotels, and small animal houses.

Natural Habitat Features

Encouraging natural habitats is a simple and effective way to provide shelter.

- **Leave a 'wild' area:** Allow a corner of your garden to grow wild with long grasses, leaf litter, and twigs. This provides cover, nesting materials, and attracts the insects that many small animals feed on.
- **Create log piles and rockeries:** Piles of logs, branches, and rocks create cool, shady nooks and hiding places for creatures like frogs, lizards and invertebrates. Place them in an undisturbed area, potentially near dense vegetation.
- **Plant dense and spiky native shrubs:** Using plants with dense or prickly foliage offers excellent protective microhabitats for small birds and other wildlife, buffering them from predators and weather.
- **Add a water source:** A shallow pond or birdbath provides essential water for drinking and bathing. Ensure there is a ramp (like a stick or stone) for small animals to climb out if they fall in, and clean it regularly to prevent disease.



Purpose-Built Shelters

You can also install man-made shelters tailored to specific animals.

Nest boxes: These are artificial hollows that provide nesting sites and housing for birds, bats, and possums, especially important in urban areas where old trees are scarce.



Bug hotels/insect shelters: These structures, made from layered natural materials like bamboo canes, straw, pine cones, and old wood, provide safe spaces for beneficial insects and solitary bees to rest and breed.

General Tips

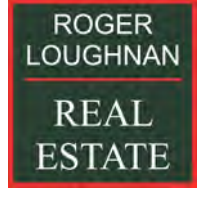
Avoid chemicals: Do not use pesticides or harmful chemicals in your garden, as they can harm wildlife directly or indirectly through the food chain.

Protect from predators: Place shelters in locations safe from predators like cats and dogs, such as elevated areas or near dense, spiky bushes.

Provide variety: A range of different habitats and plant types will attract a wider diversity of species.

Be patient: It may take a few seasons for wildlife to discover and settle into the new habitats you create.

Supporting local businesses that support the community



Mapleton



KEEPING OUR LOCAL BUSINESSES STRONG IS A TOP PRIORITY FOR US ALL.

If you take you mail into the Mapleton Post Office, the credit goes to the Mapleton Post Office.

... See you inside the post office ...



Gardening Book

Selling across the Sunshine Coast and south to Brisbane, and north to Gympie.

A useful resource for new and experienced gardeners living in sub-tropical regions.

RANGE AND HINTERLAND GARDENING
Nita C Lester and Joan Dillon

\$25



Available: The Barn on Flaxton, La Botiga, Mapleton Post Office, Mapleton Library Community Centre, Rosetta Books Maleny, Maleny Hardware and Rural Supplies



AUTHORS ARE GIFTING ALL PROFITS TO THE COMMUNITY via Montville Village Association and Mapleton Library Community Centre

LOCAL VENUES FOR HIRE

KUREELPA PUBLIC HALL

Our modern and clean hall is available for hire for meetings, community events and classes.

Contact: Dianne Fitzgerald E: fitzies56@gmail.com

MAPLETON BOWLS CLUB

Cost: for meeting \$50.00. Rent of premises, or large gathering [Trivia] \$100.00

Space: Can accommodate up to 90 persons standing or 80 persons seated.

Other: The use of the Bar and its staff should be requested, while the use of the kitchen and/or its staff is limited and would need discussion.

Contact: The Club Secretary, Martin Lambe

E: mapletonbowlsclub350@gmail.com T: 0428 898734

MAPLETON COMMUNITY HALL and SPORTSGROUND

The historic timber 109year old hall including grounds. Includes tables, chairs and a basic kitchen. Capacity is 110 persons in the hall.

To enquire email mapletonhall@gmail.com

Two tennis courts managed by The Mapleton Tennis Club are available for Hire.

MAPLETON LIBRARY COMMUNITY CENTRE

Obi Obi Road, Mapleton T: 5445 7011

E: mapletonlibrary@gmail.com

Cost: meeting \$20 per hour; plus use of the kitchen \$30 per hour

Includes: indoor and outdoor spaces, fully carpeted indoor; small kitchen; toilet inside; data projector with screen on the ceiling; 40 chairs, folding tables available. There are also small grass areas, gazebos available, chairs can be used on the grass.

MONTVILLE VILLAGE HALL

Our versatile hall is the perfect venue for everything from weddings to birthday parties to community gatherings. With ample space and beautiful views, you'll be sure to impress your guests.

Contact us today to make a reservation.

<https://www.montvillevillageassociation.org/village-hall-hire>

OBI OBI HALL

Obi Obi hall is owned by the Obi Obi and Kidaman Creek communities, and operated by members of the Obi Obi and Kidaman Creek District Community Hall Association Inc.

856 Obi Obi Road, Obi Obi 4574; PO Box 276 Mapleton Queensland 4560

Calendar, floor plan and more all on the following web site

<https://obiobihall.blog/obi-obi-hall/obi-obi-hall-hire/>

ST MARY'S HALL MONTVILLE ON THE VILLAGE GREEN

Perfect for workshops, small events, yoga/pilates classes, cosy concerts, art shows, club meetings, baby showers, family events. This space is fully accessible, now air-conditioned (warm in winter and cool in summer), low cost with a free to use kitchenette. Maximum capacity 50 seated, or 12 yoga mats.

For bookings and enquiries:

E: stmaryshallmontville@gmail.com or T: 0475 773810

LIST OF COMMUNITY ORGANISATIONS

LISTING FOR FLAXTON, KUREELPA, MAPLETON

AND MONTVILLE

Blackall Range Lions Club blackallrangelionsclub@outlook.com;
facebook.com/blackallrangelionsclub/ <http://www.brhc.org.au>

Blackall Range Visual Artists www.blackallrangevisualartists.com.au

Blackall Range Woodcrafter's Guild secretary.brwg@gmail.com

Blackall Range Zonta Club membership@zontablackallrange.org.au.
www.zontablackallrange.org.au

Bush and Beach Walking Group bushbeachwalkers@gmail.com

Hinterland Quarry Action Group T: 0416 155116
aveivers@iprimus.com.au

History Group montvillehistorygroup@gmail.com

Kureelpa & Dulong Community Hall kureelpahall@gmail.com

Mah-jong Wednesday weekly at Mapleton Bowls Club

Maleny Golf Club T: 5499 9960 gm@malenygolfclub.com.au
www.malenygolfclub.com.au

Mapleton and District Community Association madca@gmail.com

Mapleton Art Thursdays weekly at Mapleton Library Community Centre.
Contact: mapletonlibrary@gmail.com

Mapleton Bowls Club T: 5445 7913 www.mapletonbowlsclub.com.au

Mapleton Bridge Club bridgeaustralia.org
mapletoncontractbridgeclub@gmail.com

Mapleton Choir Kureelpa Hall themapletonchoir@outlook.com

Mapleton Country Market countrymarket.mapleton@gmail.com

Mapleton Craft Group Wednesdays 9-12noon, Mapleton Bowls Club

Mapleton Fire Warden T: 0493 044052

Mapleton Library Community Centre mapletonlibrary@gmail.com
www.mapletonlibrary.au T 5445 7011

Mapleton Hall and Sportsground Trustee mapletonhall@gmail.com

Mapleton Men's Shed www.mapletonmenshed.org.au

Mapleton Movers Heart Foundation Walking Group T: 0417 476768

Mapleton State School Parents and Carers Association: mapletonpandc@gmail.com

Mapleton Quilters Mondays 9-12 noon, Mapleton Bowls Club

Mapleton RSL Sub Branch Matt Dykes
0427263595 mdykes7@gmail.com

Mapleton Rural Fire Brigade First Officer T: 0428 137927, Secretary:
0499 883019

Mapleton Tennis Club mapletontennis@gmail.com [www.tennis.com.au/
mapleton-tennis-club](http://www.tennis.com.au/mapleton-tennis-club)

Montville Anglican Church huesong2@gmail.com

Montville Chamber of Commerce info@montvillecommerce.com.au

Montville Masonic Lodge montville260@outlook.com

Montville Rural Fire Brigade montville.rfb@bigpond.com

Montville School P&C msspandcpresident@gmail.com

Montville Tennis Club montvilletennisclub1925@gmail.com

Montville Uniting Church minister@ourcommonlife.org.au

Montville Village Association secretary.mva@gmail.com
www.montvillevillageassociation.org.au

Probus Club of North Blackall Range Secretary 0493 632703
nbrprobus@gmail.com

Range Community Gym and Fitness Centre
mapletongym@gmail.com www.rangecommunitygym.com.au

Range United Soccer Club info.rangeunited@gmail.com

Sunshine Coast U3A u3aoffice@u3asunshine.org.au

The Flaxton Craft Group lkathypatterson@gmail.com

The Range Community Kindergarten
www.rangekindy.qld.edu.au rangekindergarten@bigpond.com

Wildlife Volunteers Association Inc (WILVOS) Hotline 5441
6200 www.wilvos.org.au

Schools

Blackall Range Independent School
office1@brschool.com.au T: 5476 4301

Mapleton State School principal@mapletonss.eq.edu.au T:
5456 3333

Montville State School admin@montvilless.eq.edu.au T:
5452 1333

Facebooks

Mapleton Community Facebook page

www.facebook.com/groups/mapletonqueensland/

Montville Community Facebook page

www.facebook.com/groups/780987252874906/

Flaxton Community Facebook page

www.facebook.com/groups/388815358233538

Mapleton Library Community Centre Facebook page

www.facebook.com/p/Mapleton-Community-Library-100064769136195/

Happenings – Montville and surrounds email newsletter

Subscribe: www.montvillevillageassociation.org.au/subscribe-to-happenings/ Editor.mvahappenings@gmail.com

**If your organisation is not listed, please let me know.
Many thanks, nita
mapletonqueensland@gmail.com**



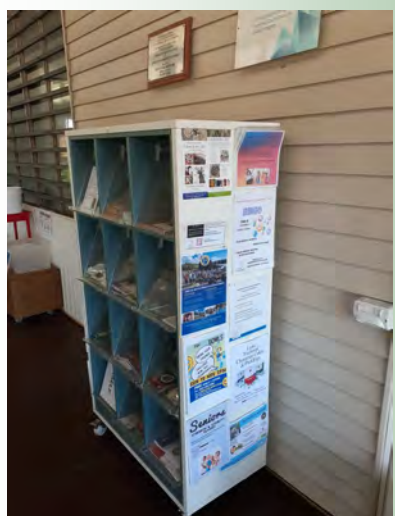
Community brochure and poster display on the
verandah of the

Mapleton Library Community Centre

If your organisation has brochures or
short term posters, consider adding them
to this community service.

If you are looking for information, check
out this collection.

**Currently overflowing with posters
and brochures—there is something
for everyone.**





RECYCLING IN MAPLETON

SPECTACLES are collected by Lions from the Mapleton Library Community Centre.

CANS and BOTTLES - Containers for Change

Mapleton Bowls Club - There is a convenient collection point which is a wheelie bin placed near the entrance. Bins can be distinguished from others by its bright blue lid.

Mapleton State School P & C. All your donations would be gratefully received and will go towards resources for our school and students.

Mapleton Men's Shed These may be left in the bins in front of the storage shed in Mapleton Forest Drive.

MOBILE TELEPHONES

Roger Loughnan Real Estate, corner Post Office Road and Obi Obi Road Mapleton, is a registered drop off location for people to donate their old working phones with chargers etc. The staff will deliver these to DVSafe Phone.

Also place in any Lion's spectacle box and these will be handed on.

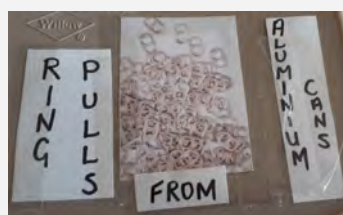
Blister packs—container on the Mapleton Library Community Centre verandah



Used pens—container on the Mapleton Library Community Centre verandah



Ring pulls from aluminium cans.
Lions will forward these for wheel chairs for children. Container on the Library Community Centre verandah



YARN LIBRARY- Sewing, knitting and embroidery items to swap— containers inside the Library Community Centre

PLANTS – there are stands outside where you can leave plants for someone else who might like them.

THANK YOU to all who have already recycled many of the above items.



Procedures for Range and Hinterland PopUp Community News management

The Range and Hinterland PopUp Community News was launched in 2016.

The News has gone through many changes with no one organisation controlling the News—it is truly a community news: for the community by the community. Auspiced by the Mapleton Library Community Centre since 2016 which provides insurance, financial support and much more.

The News offers opportunity to promote events and provide information to all community groups across the Range and the Hinterland

Thank you everyone.

The Range and Hinterland PopUp Community News is edited, published and distributed by volunteers.

There will be no discussion or correspondence on matters pertaining to the Range and Hinterland PopUp Community News.

- All articles for the Range and Hinterland PopUp Community News are to be sent to mapletonqueensland@gmail.com
- If it is important to have an article included in a specific edition, forward article as early as possible. Generally the cut off time for publication is noon Tuesday each week but as this is a fully volunteer publication inclusion is not guaranteed.
- Articles can be emailed at any time. Please include contact name and contact details.
- All articles are to be sent digitally unless otherwise pre-arranged.
- Pop up Community News is published weekly but open to review at any time. A short holiday over Festive Season each year to give the volunteers a well earned holiday.
- Currently Thursday night for distribution is the target time.
- No lost animals, political, religious, personal opinions or missing person notification will be published.
- Negative or derogatory comments will not be published.

Email mapletonqueensland@gmail.com requesting guidelines.

Anyone wishing to receive the Range and Hinterland PopUp Community News, send your email address to mapletonqueensland@gmail.com

Anyone wishing to cease receiving the Range and Hinterland PopUp Community News, send your email to mapletonqueensland@gmail.com

Disclaimer: The Editor and Team assumes no responsibility or liability for the content of this publication.

Keep informed through the web and social media

www.facebook.com/groups/mapletonqueensland/

www.mapletoncommunitylibrary.com

Remember if you wish to receive the

**RANGE AND HINTERLAND
POPUP COMMUNITY NEWS**

Email mapletonqueensland@gmail.com

Current circulation over 4,512

