

# RANGE AND HINTERLAND POPOP COMMUNITY NEWS

Weekly News

A community service since 2016

7 August 2025

Issue 453

## WHAT IS ON THIS WEEKEND?

- \*\* 9 August: Sunshine Coast Choral Festival, Coolum State Primary School
- \*\* 9 August: Montville Markets
- \*\* 10 August: Restoring Hope, The Barn on Flaxton

## DETAILS INSIDE THIS EDITION

9 August



**SUNSHINE COAST**  
*Choral Festival*

Join us for a coastwide  
celebration of song

**Saturday 9 August 2025**  
**1PM - 4.30PM**  
Coolum State Primary School

**Tickets: \$15**  
Scan the QR code  
or pay at the door  
Kids under 12 free



**Choral Festival participating choirs**

Cooran Community Choir & Hinterland Harmonies	Mouth Orchestra
Hot Ginger Chorus	New World Rhythm
Ignition!	Noosa Rocks
InSingC	Pitch-In
Joy of Singing Sunshine Coast	Sunshine Statesmen
Mapleton Community Choir	Waves of Harmony

[sunshinecoastchoralfestival.yolasite.com](http://sunshinecoastchoralfestival.yolasite.com)

## OUR FUTURE IS WORTH PLANNING FOR - PROPOSED SUNSHINE COAST PLANNING SCHEME

Learn what the proposed planning scheme means for you  
and the Sunshine Coast

**BRLUPA—Blackall Range Land Use Planning Association**

**Annual General Meeting 26th August at 6:30pm, Mapleton  
Library Community Centre**

**IMPORTANT DISCUSSION**

**ALL WELCOME**

The proposed planning scheme is important to everyone on the Sunshine Coast. It will replace the current planning scheme and help shape our neighbourhoods and our region. It's about the places where we live, work, learn and play.

[https://haveyoursay.sunshinecoast.qld.gov.au/  
newplanningscheme](https://haveyoursay.sunshinecoast.qld.gov.au/newplanningscheme)

## 453rd EDITION CONTENTS

Sunshine Coast Choral  
Festival  
BRLUPA  
MOMA  
Mary Cairncross  
Nambour Markets  
Grant Writing Workshops  
Ginger Factory  
Orchid Exhibition  
Curra Community Hall  
Mapleton Writers

The Cream of Clapton  
Maleny Film Society  
Development Applications  
Fauna and Flora  
Community Services  
Date Claims  
Repeat Articles  
Local Organisations'  
Contacts and more

### HELLO ART LOVERS OF MAPLETON. DATE CLAIMS

(MOMA) Museum of Miniature Art at  
10 Warruga St, Mapleton

Artists of the Month

August - Exhibition by Narda Salm

September and October - Exhibitions by  
Nicole Burr

November - Exhibition by Victor Duncliff

MOMA, Museum of Miniature Art is a little  
street gallery, just like a real art gallery!



### MARY CAIRNCROSS

#### INTERPRETATION PLAN REFRESH

Join us to help shape the plan that guides how we create  
interpretive experiences for visitors at Mary Cairncross Scenic  
Reserve.

Wednesday, 20 August 2025 3:00pm-5:00pm

Mary Cairncross Scenic Reserve  
148 Mountain View Road Maleny

The Sunshine Coast Council is renewing the plan that helps to  
guide how we create interpretive experiences for visitors at Mary  
Cairncross Scenic Reserve. The plan guides displays, signs, audio-  
visual media, guided walks and interactive experiences across the  
site including within the Rainforest Discovery Centre and on the  
forest tracks.

Join us for a workshop to help shape the plan. We want to hear  
from you regarding the stories we should tell and how we should  
tell them.

The workshop will explore through discussion and facilitated  
activities:

- What stories could be told at the reserve
- Where the stories could be told
- From an interpretive perspective what is currently working at  
Mary Cairncross Scenic Reserve and what needs to change.



### UPCOMING WORKSHOP - INSURANCE FOR COMMUNITY GROUPS/NFP'S

Join us for a practical and informative session designed to help community groups navigate the complexities of insurance. This workshop will cover:

- Understanding risk management and determining appropriate levels of insurance cover
- Accurately identifying your organisation’s activities for insurance purposes—what to include and what to avoid
- Exploring opportunities for cost-sharing across organisations
- Tips and strategies for shopping around to find the best insurance options

Whether you're a seasoned committee member or new to managing risk, this session will provide valuable insights to help safeguard your organisation.

### DROP-IN SESSIONS HELP GET YOU GRANT READY

Council’s next round of grant support sessions kicks off this week at local libraries. Discover the right funding fit for your not-for-profit or community group and learn how to apply.

No appointments necessary, first in, first helped.

Date	Time	Location
Thursday 7 August	9am - 1pm	<b>Kawana Library</b> , 30 Nanyima St, Buddina
Thursday 14 August	9am - 1pm	<b>Nambour Library</b> , Cnr Currie St &, Bury St, Nambour
Thursday 21 August	9am - 1pm	<b>Maroochydore Library</b> , 44 Sixth Ave, Maroochydore

### Major Grants Open

Project funding for not-for-profit community groups up to \$15,000, and up to \$30,000 for infrastructure projects.

The current major grant round is open and closes on 25 August 2025.

For information on eligibility, category priorities and assessment criteria see our Community grants guidelines.

**<https://www.sunshinecoast.qld.gov.au/living-and-community/grants-and-funding/grants-programs>**



## ARTY AUGUST IN THE BARN AT GINGER FACTORY

Visit The Ginger Factory this August to explore the art market in the Barn!


Featuring a unique range of handcrafted and hand-painted pieces made by local artists including ceramics, paintings, textiles, jewellery, toys, and more.

Be sure to visit and marvel at the beautiful pieces available to purchase!

Now until end of August.

FREE ENTRY, NO TICKETS REQUIRED

"Iridescence" - Wallum Sun Orchid by  
Rae Bassett @TheBotanicalPlanet



*In Bloom*

*Exhibition*  
*native orchids through art and lens*

This vibrant group exhibition celebrates the intricate beauty of Australia's native orchids as seen through the eyes of local artists.

09 TO 23 AUGUST 2025  
THE LITTLE RED COTTAGE ~ ART & ECOLOGY SPACE  
20 Coral St, Maleny Qld

9 August

Saturday 9th August

7:30am - 12noon



**Montville**  
**MARKET**



## MAPLETON WRITERS

**Mapleton Writers** met for the first time on Friday 1<sup>st</sup> August, at the Mapleton Library Community Centre, and it was a productive and peaceful first meeting.

We will next meet on **Friday, August 29<sup>th</sup> between 1.30 pm and 3.30 pm**. Bring your pen, notepad, laptop, or a scrap of paper—writers of all experience levels who are seeking a quiet space to work alongside others are welcome. We use the Pomodoro technique and whether you want to develop an existing manuscript or start a new project, you are very welcome.

For more information, please contact Tracey on 0428 025038 or ask one of your very helpful Library Community Centre staff.



## UNEARTHED EXHIBITION

Now until 26<sup>th</sup> October, 10:00am-3:00pm

Bankfoot House, 1998 Old Gympie Rd, Glass House Mountains

Explore the archaeology of the Sunshine Coast. From pieces rescued from the wreck of the SS Dicky to some of the thousands of objects unearthed here at the Bankfoot House Heritage Precinct, explore how archaeologists have helped to piece together the history of the Sunshine Coast. Interactive and engaging activities for all ages. Free. Registration not required.





## QCCC MAPLETON WEEKLY UPDATE

Next week is shaping up to be a big one for school groups at QCCC Mapleton! We begin the weekend by welcoming a Brisbane-based school for their Year 11 Leadership Camp, with students exploring what it means to lead with integrity, courage, and purpose. Then on Sunday, we host a rare Sunday arrival—another Brisbane school kicking off their Grade 12 Retreat, staying with us until Tuesday.

Monday ramps up further with the arrival of two Grade 5 camps, one from the Fraser Coast and another from the Sunshine Coast. The Fraser Coast school will then send their Grade 4s on Wednesday, who will be camping alongside two more Grade 5 groups—one from Brisbane and another from the Wide Bay-Burnett region. With camps for students from Year 4 through to Year 12, the site will be alive with activity, learning, and connection!

### EVENT RECAP: HELLS BELLS ADVENTURE RACE

Last weekend, QCCC Mapleton was proud to host part of the Hells Bells Adventure Race, and what a success it was! Over one hundred hardy competitors pushed themselves through rugged hinterland terrain between Witta and Mapleton, navigating trails, rivers, and challenges along the way.

A special shoutout to two of our own: Levi and Riley, QCCC staff camp kids, who took out first place in the shorter Fairy Bells Race! We're also proud of the multiple QCCC Adventure Teams who participated under our banner, embracing the challenge with grit and enthusiasm.

Mapleton truly is the adventurous side of the Blackall Range—and we're thrilled to continue playing host to events that celebrate the spirit of adventure in our region.



## FRAGILITY AND RESILIENCE

Now – September 13<sup>th</sup>

9:00am-5:00pm

**Caloundra Regional Gallery in collaboration with Sunshine Coast Libraries proudly presents the next exhibition for the Maroochydore Library Artspace.**

If you change the way you look at things, the things you look at change.

The work in this exhibition began as a response to the catastrophic Australian bushfires in 2019-2020. Sally Brown reflected on the stories of fragility and resilience that emerged at the time and began researching and drawing endangered plants and animals. Flora, fauna, and sensory memories are intertwined in often unexpected ways in Sally's work. In 2021, she set up Ozflorana® to promote her work and raise awareness of endangered Australian flora and fauna. Focusing on the resilience of nature through her art and design helps Sally face the ongoing complexities of life as a person with disabilities.



This series of digital prints captures the patterns of Australian nature and celebrates Sally's unique and colourful interpretation of it.

Artwork credit: Sally Brown | Eucalypt (detail) | 2025 | digital print | 29.7 x 21cm. Image courtesy of the artist.



### THE CREAM OF CLAPTON - THE SLOWHAND SHOW

Over a decade ago, The Claptomaniacs formed on the Sunshine Coast, keen to play tribute to guitar legend Eric Clapton, and they keep coming back to their Clapton roots, particularly at the request of hard-core Clapton fans. Over the last few years, they have sold out several of these unique, multimodal concert-events, at the beautiful Majestic Theatre in Pomona, focusing exclusively on the hits of Eric Clapton. Now they are bringing the show to the Glasshouse hinterland, to the Maleny RSL.

On Saturday August 16, the programme will present Clapton's music; from 1968 in the Yardbirds, blues associations with the likes of John Mayall, the supergroup Cream, Blind Faith and onwards through his solo career and multiple other collaborations (JJ Cale etc), with classics like Layla, Tears in Heaven, Change the World, I Shot the Sheriff and many more, with a colourful slide show that fills in the back-story of the songs. For die-hard fans, or for those with a passing interest, book now.

**Saturday 16 August 2025 7:00pm-10:00pm**

Maleny RSL  
1 Bunya St, Maleny

## A COMPLETE UNKNOWN

23 August 3pm and 7pm

USA (Captions) – Music Biopic

– 141 mins –  (Coarse Language)

MALENY COMMUNITY CENTRE

James Mangold's *A Complete Unknown* sets a new standard for music biopics. Based on Elijah Wald's book, *Dylan Goes Electric!*, the film chronicles Bob Dylan's transition from folk icon to electrifying rock star. Timothée Chalamet delivers an extraordinary portrayal of Dylan, capturing his complexity and enigmatic character. The film authentically recreates the 1960s music scene, showcasing pivotal moments like the Newport Folk Festival. *A Complete Unknown* not only captures the essence of Dylan's rise but also offers a powerful exploration of artistry, fame, and the struggles of a generation.



### MATINEE SCREENING

**Doors Open** at 2:30pm for licensed bar, tea/coffee, slices

**Movie Starts** at 3:00pm

### EVENING SCREENING

**Doors Open** at 6pm, licensed bar, tea/coffee, slices, BYO nibbles, meals or restaurant takeaway (tables provided)


**Movie Starts** at 7:00pm

**THIS EVENT GOES ON SALE 10 August**

<https://malenyfilmsociety.au/project/a-complete-unknown/>

## THE LAST JOURNEY

6 September 3pm and 7pm

Sweden (Subtitles) – Doco – 95 mins – 

MALENY COMMUNITY CENTRE

Lars Hammar retires after 40 years as a French teacher. But instead of enjoying his retirement, he spends his days sitting in his armchair. His son Filip devises a plan to relive a road trip to the French seaside where the family spent many happy vacations, hoping to reinvigorate him – even finding an old orange Renault 4 like the one they used to own. Off they set with Filip's friend Fredrik. Of course everything does not go entirely to plan.

This is a documentary as these are real people, not actors. But as Filip and Fredrik are a popular Swedish comedy duo (like Hamish and Andy), expect plenty of laughs. And expect to leave with tears in your eyes, understanding why this was such a smash hit in Sweden.



### MATINEE SCREENING

**Doors Open** at 2:30pm for licensed bar, tea/coffee, slices

**Movie Starts** at 3:00pm

### EVENING SCREENING

**Doors Open** at 6pm, licensed bar, tea/coffee, slices, BYO nibbles, meals or restaurant takeaway (tables provided)

**Movie Starts** at 7:00pm

**THIS EVENT GOES ON SALE 24 August**

<https://malenyfilmsociety.au/project/the-last-journey/>

## RECENT DEVELOPMENT APPLICATIONS IN DIVISIONS 5 AND 10

This is an initiative of Pop Up Community News aimed at providing information and heightened awareness as to developments in our region. Hopefully the information will provide a spring board should anyone wish to dive deeper into any specific application. Using the link: <https://developmenti.sunshinecoast.qld.gov.au/> or entering "development i sunshine coast" into a browser will take you to the Development i home page.

Click on "Application Search" and enter the application number. Select "Details" if you want to dive deeper. The supporting documents can typically be downloaded or viewed by selecting "Application Documents" in the right hand section of the screen.

In the listings below, typically a brief editorial comment is provided after each application description. These are shown in *italics*.

### **DIVISION 10:**

#### **Lodged: 30/07/2025 DA#: REC15/0230.02**

52 Henebery Road, BURNSIDE - Minor Change to Development Approval - Reconfiguration of 1 Lot into 36 Lots - Warilda Properties Pty Ltd - Covey Associates Pty Ltd. *"Minor" Change to approval. Quote from application: "Amend the stormwater design from three separate bioretention basins to one. Additional lots within the development, all complying with the minimum lot size. Amendment to external road upgrades condition to align with other approvals."*

#### **Lodged: 30/07/2025 DA#: RAL25/0065**

74 Reinbott Rd KENILWORTH - Reconfiguration of Lots by Subdivision (2 Lots into 3 Lots) and Easement - Stanley and Marilyn Johnston - Danya Cook Town Planning. *Splitting off of 4.4ha.*

#### **Lodged: 01/08/2025 DA#: RAL21/0048.01**

Elizabeth St KENILWORTH - Extension to currency period - Reconfiguring of 2 Lots into 32 Lots plus 3 x drainage reserves - Ret and Sam Projects Pty Ltd. *Due to lapse 05/10/2026, request for a 2 year extension to October 2028.*

#### **Lodged: 01/08/2025 DA#: OPW23/0197.02**

Edward Place, KENILWORTH - extension to currency period - Roadwork, Landscaping, Stormwater, Earthworks, Electrical - Ret & Sam Projects Pty Ltd - Projex Partners PL. *Similar to above. Due to lapse 18/03/2026, request for a 2 year extension to March 2028.*

#### **Lodged: 31/07/2025 DA#: MCU10/0016.02**

14 & 16 Bury St and 5,7,9,15, 30 & 35 Mill St NAMBOUR - Minor Change to Development Approval - Shopping Complex inc Re-use of Heritage Listed Mill Houses & Preliminary Approval for Building Works - Iron Chef Pty Ltd - ADAMS + SPARKES Town Planning. *From Application: "The minor change seeks to remove Condition 6 of the existing development approval to allow greater flexibility in outdoor dining areas associated with the approved restaurant use, without altering the nature or intensity of the development."*

#### **Lodged: 04/08/2025 DA#: OPW25/0329**

1679-1681 Yandina Coolum Rd YANDINA - Earthworks, Stormwater, Vehicle Crossover - MT COMP Pty Ltd - Bax Engineering Pty Ltd. *Relates to MCU23/0020 - approval for a car wash.*

#### **Lodged: 04/08/2025 DA#: OPW25/0330**

15 Brandons Rd YANDINA - Fauna Management Plan - Stockland Land Lease Management Pty Ltd - Colliers International Engineering & Design Pty Ltd. *Relates to MCU22/0394 - Establishment of a retirement facility.*

**DIVISION 5:****Lodged: 30/07/2025 DA#: OPW25/0319**

81 Apple Gum Pl PALMVIEW - Vegetation Clearing - Eli Ferguson.  
*Some 8 trees, stringy bark and turpentine with die back and limb dropping issues, close to house and use areas.*

**Lodged: 30/07/2025 DA#: OPW25/0321**

2 Summer Place PALMWOODS & 91-97 Woombye-Palmwoods Road WOOMBIE - Landscaping - Purestream Developments Pty Ltd - Innovative Planning Solutions. *Relates to RAL25/0003, 1 lot into 2.*

---



## LEARN MORE ABOUT BIRDS THROUGH BIRD WATCHING

Seasonal bird survey

Join our seasonal bird surveys and contribute to citizen science

Bird enthusiast Rob Kernot facilitates the early morning seasonal bird surveys. This repeated science event is an opportunity to contribute to an understanding of what birds frequent the reserve at different times of the year.

2025 Dates

**Spring:** Monday 1 September (7.30am)

**Summer:** Monday 15 December (7am)

Time: Approximate duration 90minutes.

The survey takes place on two sections of track. It is great if you are familiar with local birds and their calls but not a requirement. Anyone with an interest in birds is welcome to join. Binoculars are useful.

Numbers are limited, registration required.

Registration links will be updated on this page throughout the year. Mark your calendar and watch this space!

A Noisy pitta stands on the forest floor of dark, damp leaf litter. In its beak, it holds a large, glossy rainforest snail. The bird's head and nape are black with a chestnut crown. It has a distinctive black facial stripe over the eye. Its underpart is a dull yellow, and it has a small, blue shoulder patch. The tail is black, with a small red patch under the tail.

Image courtesy of Rod Edmonds (Noisy pitta, *Pitta versicolor*)



## WONGA PIGEON

38-45cm

Wonga Wonga

*Leucosarcia picata*



LOCAL

**Brief description:** Grey and white pigeon with white 'necklace'. Usually singly or in pairs. If approached head on when perched, often turns around so that spotted rear underparts make it more difficult to see.

**Habitat:** Forests, woodlands often with plenty of understorey.

**Local status:** Common in many areas.

**Male and female:** **Crown** and **forehead** white grading to grey at the rear. **Head** grey and white with darker grey line from bill through eye and a little beyond. **Eyes** red-brown, eye ring pink. **Bill** pink with dark grey tip. **Upperparts** grey with white tipped side tail feathers. **Chin** to **breast** pale grey grading to darker grey. White 'necklace' from sides of neck across breast is identifying feature, dark grey bands run from shoulders and almost meet across breast. **Belly** and **vent** white with copious black spots from under wings, along flanks and across lower belly and vent. **Legs** and **feet** pink-red.

**Juvenile:** Similar to male but bill dark grey, brown-grey under wings and 'necklace' less defined.

**Flight:** Strong and fast with alternating short glides. If flushed from ground will often fly to a nearby tree and turn its spotted rear towards the intruder.

**Call:** Long repeated 'wong wong...' Sometimes continuing for over 10 minutes.

**Feeding:** Ground feeder of seeds, fallen fruit and some insects.

**Breeding:** **Nest** a platform of dry sticks placed on top of branch or sometimes near main trunk of tall tree. **Eggs** 2, white.

**Breeding season** September to December.

© Brigalow Birds Educational Group



# Grow Australian Plants

## Grevillea 'Honey Gem'

A fast growing large shrub to 4m tall x 3m wide with deeply divided dark green foliage.

The large orange flowers are very showy. Cut flowers will last two to three days in water.

Prefers full sun and will tolerate a wide variety of well drained soil types.

A successful feature or screening plant.

Attracts birds, bees, butterflies. A good shrub for small bird nesting.

An old favourite cultivar but will grow large if it likes your location. You can trim a 1/3 once a year after flowering.

Currently coming into flower across the region.



All images: nita



## Gardening Book

Selling across the Sunshine Coast and south to Brisbane, and north to Gympie.

A useful resource for new and experienced gardeners living in sub-tropical regions.

**\$25**

Available: The Barn on Flaxton, La Botiga, Mapleton Post Office, Mapleton Library Community Centre, Rosetta Books Maleny, Maleny Hardware and Rural Supplies



**WEED**

## *Bryophyllum delagoense*

### **Mother-of-millions**

As the name suggests, mother of millions reproduces rapidly, producing hundreds of tiny plantlets which quickly form new colonies. It is adapted to dry conditions and can survive long periods of drought. This increases the plant's potential to persist and spread. Mother of millions is toxic when ingested by livestock; it is also poisonous to humans and household pets.

Mother of Millions environment weed status is classified as significant in Queensland and New South Wales, minor in Western Australia and potential weed in the Northern Territory." It is probably of most concern in southern and central Queensland, and was **recently ranked as the third most important environmental weed in south east Queensland.**

It is actively managed by community groups in Queensland and is listed as a priority environmental weed in eight Natural Resource Management regions throughout eastern Australia.

A fleshy herbaceous plant with upright stems growing 30-180cm tall. Its mottled leaves are cylindrical and have a few small 'teeth' near their tips. Tiny plantlets are often produced at the tips of its leaves. Its drooping bell shaped flowers (2-4cm long) are usually red or red pink in colour. These flowers are borne in dense clusters at the top of its stems.



# Community Service

## JP SERVICE

Monday mornings from 8:30am to 11:30am without an appointment at the Mapleton Library Community Centre.

Or Thursday mornings 9am to 11am.

Telephone 5445 7182 for a booking in Mapleton.

## WELCOME PACK FOR NEW RESIDENTS

**Are you a new resident?**

**Collect your pack from the  
Mapleton Library Community Centre**

Borrowing hours: 1pm to 4pm week days  
9am to 12noon Saturdays

### What does the pack include?

- Brochures promoting community organisations
- Range Popup Community News - a free weekly news for everyone with information about the events in your neighbourhood
- List of community organisations in Mapleton, Flaxton and Montville
- Zonta Business Directory
- Recent publications such as the History of the Mapleton Bowls Club

**Also available at the COMMUNITY STALL at the monthly Mapleton Country Market.**

## MAPLETON RURAL FIRE BRIGADE

**Monthly Training:** 5:30pm on the 2nd Tuesday of Month

**Monthly Meeting:** 5:30pm on the 3rd Tuesday of Month

**First Officer (all operational matters):** 0428 137927

**Fire Warden (fire permits, safety checks):** 0499 778806

**Secretary (new members, administration):** 0499 883019

**Website:** <https://www.facebook.com/mapletonruralfirebrigade/>

**E-Mail:** [MapletonRFB@gmail.com](mailto:MapletonRFB@gmail.com)

**Address:** 37 Obi Obi Road, Mapleton 4560

**Postal:** PO Box 366, Mapleton 4560

Following the recent Annual Meeting the above details are current.

## ST. MARY'S ANGLICAN CHURCH

On the green, Montville

Sunday Eucharist at 8am

Wednesday Meditation with Maureen 9am

For general enquiries contact Carole Phillips at 5445 7839

Baptisms and weddings enquiries welcome.

Parish Office: 07 5499 9130

Email: [maleny@anglicanchurchsq.org.au](mailto:maleny@anglicanchurchsq.org.au)

## Montville Uniting Church

Services are held each Sunday at 8.15am when a combined service is held at Maleny Uniting Church at 9.45pm. All welcome.

Minister: Rev Nathan Barton

E: [minister@ourcommonlife.org.au](mailto:minister@ourcommonlife.org.au)

M: 0429 632527

The church is open as a Reflection Gallery every day from at least 10am till 3pm.

# Date Claims

- 8 August** Trivia at Mapleton Bowls Club for Mapleton Library Community Centre.
- 9 August** Montville Markets.
- 10 August Restoring Hope, 3:30pm, The Barn on Flaxton.**
- 12 August** Archery Accessibility fundraiser, 2pm-4:30pm, QCCC.
- 17 August** Picnic among Friends, Maleny.
- 19 August** AGM Kureelpa and Dolong Community Hall, 6:30pm.
- 23 August** Mapleton Country Market 8am to 12pm at the Mapleton State School car park. Find us on Facebook, message us on messenger or 0419 726 603.
- 26 August** BRLUPA, Annual general meeting 6:30pm, Mapleton Library Community Centre.
- 29 August** Mapleton Writers, 1:30pm-3:30pm, Mapleton Library Community Centre.
- 7 September** Father's Day.
- 13 September** Movie Night, Blackall Range Lions Club, Mapleton Community Hall.
- 19 October** Book Fair and Mini Market, Mapleton Library Community Centre.
- 29 November—7 December** Sculpture on the Edge, Flaxton Gardens.
- 6 December** Open Day, QCCC.

**Disclaimer: The Editor and Team assume no responsibility or liability for the content of this publication.**



10 August



**FUNDRAISING CELEBRATION**

RAFFLES, SALE AND AUCTIONS OF DONATIONS MADE BY LOCAL BUSINESSES

All funds raised go to the charity

**restoring hope Parkinson's therapy**

Thank you to The Barn on Flaxton for being our hosts and providing the coffee & cake

\$15 per person, includes coffee & cake  
Please pay at the door, card facilities will be available

Sunday 10 Aug 2025 | 3:30 PM  
The Barn on Flaxton

RSVP: info@rhptherapy.org.au by 9 August



## SUNSHINE COAST COUNCIL MEDIA RELEASE

28 July 2025

### 'Big win': popular hinterland park gains exciting upgrade

One of the hinterland's favourite parks is set to be even better with two welcome upgrades about to start construction.

Sunshine Coast Council is delivering what the Mapleton community has long advocated for – a renewed and inclusive public amenity at Lilyponds Park and a brand-new half court for basketball, netball and pickleball.

Once complete, the park, located at 10 Delicia Road, will be even more welcoming and enjoyable for all.

### A win for the whole community

Sunshine Coast Division 10 Councillor David Law said that following extensive community engagement and thoughtful planning, Council had worked to respond to the community's call for improved accessibility and enhanced facilities at Lilyponds Park.

The result is a smart, sustainable solution that meets the needs of all park users – repurposing the existing amenity building, which remains in excellent condition.

"We listened and collaborated with the Mapleton community for the best way forward," Cr Law said.

"We are delivering a solution that respects the existing infrastructure while embracing the values of accessibility, inclusion and active recreation.

"This is a big win for everyone in our community.

"It's a great example of how we're working together to create vibrant, inclusive spaces for everyone."

### A smarter, more inclusive upgrade

The upgraded design will transform the internal layout of the current structure to include one fully compliant People with Disability (PWD) unisex cubicle, one ambulant unisex cubicle and one additional standard unisex cubicle.

Cr Law said this innovative reconfiguration not only addressed the community's concerns about the lack of a Disability Discrimination Act (DDA) compliant toilet in Mapleton, it also increases the overall capacity of the facility.

"This is a timely enhancement with the upcoming half-court facility expected to boost park visitation," Cr Law said.

"In addition, Council will construct a formalised, accessible pathway linking the sealed car park to the amenity building, ensuring safe and inclusive access for all members of our community."

The design for the public amenity upgrade is scheduled to be finalised this month (July 2025). The \$350,000 project is planned to start in mid-August 2025 with completion by December 2025, weather permitting.



## **New half court set to boost park fun**

Cr Law welcomed the start of construction for the new half court, following community engagement confirming the community's support for the project.

"During November last year we asked our community to share their interest and feedback on a basketball and netball half court in Lilyponds," Cr Law said.

"Feedback was positive, with 87 per cent of respondents expressing very strong support for the half court and 81 per cent supporting the location at the active youth zone to the south of the skate park and west of the existing playground.

"In the feedback, residents asked for pickleball to be included and I'm really pleased to share that pickleball line marking will also be added to the court.

"We're investing \$130,000 into what is going to be a great recreational space and meeting place for our community to enjoy."

Works on the new half court facility are expected to start in early August 2025 and continue through to late October 2025, weather permitting.

The skate park and playground will remain open throughout the works, with some pedestrian detours in place.

The site carpark will have slightly fewer spaces to ensure safety during construction.

Works will include installing the concrete basketball/netball half court with hoops, installing sandstone retaining walls and seating.

Sunshine Coast Council is committed to working hand-in-hand with local communities to create public spaces that are welcoming, functional and future-ready.

---

### RANGE COMMUNITY GYM

Range Community Gym celebrated a significant milestone last week. Our two dedicated trainers, Paul and Tina achieved a combined 25 years of service with the Gym (Paul 15 years and Tina 10 years). Last Friday, over one hundred gym members and guests joined a celebratory morning tea held at the Mapleton Bowls Club (a big thank you to the Bowls Club committee for use of the club facilities).

This turnout reflects the great regard that all our gym users have for Paul and Tina who have helped so many Gym members past and present with their fitness journey over many years. By improving and maintaining the health and fitness of our community, Paul and Tina contribute greatly to the quality of life enjoyed by our community.

Our Gym President, Chaffey Backhouse also highlighted that Paul and Tina create the welcoming and friendly culture of the Gym which is so often recognised and valued by our members. The morning tea team of Annette, Lucille, Fiona and Sandra went above and beyond to put on the grandest morning tea ever held by the Gym with a special cake of suitable proportions for the occasion. Well done and thank you Morning Tea Team..!



Congratulations to Paul and Tina.



**QCCC** MAPLETON presents..

## Archery Accessibility fundraiser



Raising money to improve accessibility to our archery range so **EVERYONE** can enjoy archery at QCCC Mapleton

If you love archery or have always wanted to try, come enjoy a 2hr archery session with us

\*under 18's must have a parent/guardian present

**Sunday the 17th August 2025**  
**2.00pm - 4.30pm**

To book or see more details, scan the QR code



Scan me!

@qcccchappycampers



## EXPLORING TOMORROW

Ben Johnston tackled a number of complex concepts such as AI, crypto and blockchain and quantum computing of the future with ease and style. Over 20 community members were enlightened and challenged.

Everyone appreciated Ben's attitude and delivery. Thank you Ben—we were sent home with ideas, concepts and thoughts spinning.

Thank you to the Mapleton Library Community Centre volunteers for hosting such an innovative presentation.

---

# Mapleton Community Day

It was truly a celebration of community not-for-profit organisations. We were delighted as 17 groups were on show with two additional groups who sent paperwork for display totalling 19.

Recorded were six couples new to the community along with numerous residents who have lived on the northern end of Range for under three years. One couple dropped by as they are considering purchasing in the area.

Some residents dropped by to see one or two groups only, while some visited many of the displays chatting and spending up to ¾ hours on site.

At times, it was rather noisy, so some 'escaped' and watched the pennant bowling teams in action.

A number of groups reported possible new members and interest in their forthcoming events. Many brochures were taken and contacts were collected.

Thank you to all organisations. The Mapleton Bowls Club looks forward to welcoming your group at our next Community Day.



Above:  
Woodies

Left: Zonta  
and Mapleton  
Library  
Community  
Centre



Left: Mapleton Movers; Above Mapleton Fire Brigade



Above: Mahjong

Right: Montville History

Blow: Mapleton Craft Group



Mapleton Art



# SAVE THE DATE OPEN DAY

## The Day includes

- ✓ TribalLink Experience
- ✓ Resort Pools
- ✓ Family Friendly Activities
- ✓ Fantastic Food
- ✓ A Tour of our Beautiful Grounds
- ✓ Local Charities Invited to get Involved

 **6 DECEMBER, 2025**

 [www.qccc.org.au](http://www.qccc.org.au)



## Recent Development Applications in Divisions 5 and 10

This is an initiative of Pop Up Community News aimed at providing information and heightened awareness as to developments in our region. Hopefully the information will provide a spring board should anyone wish to dive deeper into any specific application.

Using the link: <https://developmenti.sunshinecoast.qld.gov.au/> or entering "development i sunshine coast" into a browser will take you to the Development i home page.

Click on "Application Search" and enter the application number. Select "Details" if you want to dive deeper. The supporting documents can typically be downloaded or viewed by selecting "Application Documents" in the right hand section of the screen. In the listings below, typically a brief editorial comment is provided after each application description. These are shown in *italics*.

### **DIVISION 10:**

**Lodged: 21/07/2025 DA#: MCU25/0206 & OPW25/0243**  
9 Colemans Rd YANDINA - New Construction of Dwelling - 1 Storey, Earthworks - Ausmar Homes - Suncoast Building Approvals. *4 bed, 2 bath, media and retreat 2 garage, 22.5 ° hip roof on 1003M2.*

**Lodged: 21/07/2025 DA#: OPW25/0302**  
86-90 Farrell St YANDINA - Vehicle Crossover - Bax Engineering. *Long driveway onto Ninderry Road.*

**Lodged: 23/07/2025 DA#: MCU25/0209 & OPW25/0306**  
5 Laidlaw Rd North COES CREEK - Dual Occupancy, Driveway, Earthworks, Landscaping - J Lanham - Murray & Associates (QLD) Pty Ltd. *New 2 bed, 1 bath, 2 garage dwelling and rework for existing 2 bed 1 bath dwelling on over 2ha.*

**Lodged: 23/07/2025 DA#: MCU25/0210**  
195 Dulong Rd DULONG - Secondary Dwelling - Brad McDonald - Danya Cook Town Planning. *In part, incorporation of bathroom into existing structure.*

**Lodged: 21/07/2025 DA#: MCU15/0296.06**

213 Memorial Dr EERWAH VALE - Minor Change to Development Approval - Motel, Accommodation Units, Managers Residence and Ancillary Restaurant and Function Facility - Noosa Shire Developments Pty Ltd - Pivotal Perspective Pty Ltd. *From application: "The application seeks a 'minor change' to development approval MCU15/0296 to increase the number of units from 39 to 46 rooms. The applicant seeks to extend the currency period for a further 2 years (2 June 2028)."*

**Lodged: 24/07/2025 DA#: REC15/0232.02**

40 Noel St NAMBOUR - Minor Change to Development Approval - Reconfiguring of Lot 3 RP905437 into 3 Lots - Sandra & Steven Kreidemann - Northshore Building Approvals Qld. *Proposed dwelling extends beyond the building envelope.*

**Lodged: 24/07/2025 DA#: RAL25/0063 & OPW25/0308**

113 Burnside Rd BURNSIDE - Boundary Realignment, Earthworks & Stormwater Drainage - Blue Sky Estates Pty Ltd - Subdivisions (Qld) Pty Ltd. *Multiple objectives incl secondary dwelling and boundary realignment.*

**Lodged: 25/07/2025 DA#: OPW25/0311**

204 Coes Creek Rd COES CREEK - Earthworks - Roni and Trever Cole - URBN Town Planning Pty Ltd. *Application lodged as a result of unapproved earthworks already performed.*

**Lodged: 28/07/2025 DA#: MCU25/0212**

13 Mitchell St NAMBOUR - Multiple Dwelling (12 x Units) - AB Resi Developments Pty Ltd atf Resi Unit Trust - Locality Planning & Consulting. *Presents as ground floor parking, and 3 levels of residential above with a detached office module. From the plans, there appears to be 22 1 bedroom units, and one 3 bed unit with 3 ensuites, not "12 X units". (Opinion: I've yet to be convinced the human species is designed to thrive dwelling in habitats such as this.)*

**DIVISION 5:****Lodged: 22/07/2025 DA#: OPW25/0303**

16 Mawhinney Rd GLENVIEW - Tree Removal - Layne Beale. *Removal of Grey Gum with die back.*

**Lodged: 23/07/2025 DA#: POS25/0127**

13 Red Berry Lane WOOMBYE - BFP for Dual Occupancy - Survey Plan SP345612 (2 Lots) - Surveyors Co. *Administrative: Approving Plans*

**Lodged: 24/07/2025 DA#: MCU25/0211 Impact Assessment**

2951 Maleny Kenilworth Rd CAMBROON - Nature-Based Tourism - 42 Sites, plus three (3) Cabins, Food and Drink Outlet (Café) and Function Facility (Wedding Venue) - Kookaburra Park Property Pty Ltd - Danya Cook Town Planning. *Impact Assessment. On 30ha.*

**Lodged: 29/07/2025 DA#: MCU25/0216 & OPW25/0315**

6 Eric Ct MOOLOOLAH VALLEY - Dual Occupancy, Stormwater, Earthworks, Landscaping & Vehicle Crossover - Rachael Mason and Dani Farmer - Simply Town Planning. *Existing dwelling removed and replaced by a pair of attached 2 level, 5 bed (2 ens), 3 bath 2 garage Duplexes on 1181M2.*

**Lodged: 28/07/2025 DA#: MCU25/0214 and CAR25/0350**

407-413 Flaxton Dr FLAXTON - Secondary Dwelling - Robert Harris & Anne-Marie Driver - Sunshine Coast Building Approvals. *Secondary Dwelling, 2 bed, 1 bath, deck, skillion roof, presents as a demountable on stilts clinging to the escarpment. Waste Liquids processing to be confirmed.*

**THANK YOU FOR THE GIFTED PLANTS AT THE MAPLETON LIBRARY COMMUNITY CENTRE**

**Many plants have been donated and sold recently. If you have any unwanted pot plants that someone else may desire, please donate.**

**Your donations give joy to others especially at times of increasing prices.**

**Just \$2 each or 3 for \$5 and the plants are yours.**

**Funds raised go to the printing of the new 'Walks on the Range' brochure and the 'Mapleton Art Trail' brochure.**

**Walks Trail brochures are now available at the Library Community Centre and at the Montville and Maleny Visitors' Centres.**

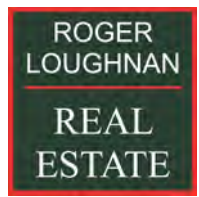
**The walks trail brochure is very popular.**

**KEEPING OUR LOCAL BUSINESSES STRONG IS A TOP PRIORITY FOR US ALL.**

**If you take you mail into the Mapleton Post Office, the credit goes to the Mapleton Post Office.**

**... See you inside the post office ...**

*Supporting local businesses that support the community*



**Mapleton**



## LOCAL VENUES FOR HIRE

### KUREELPA PUBLIC HALL

Our modern and clean hall is available for hire for meetings, community events and classes.

Contact: Dianne Fitzgerald E: [fitzies56@gmail.com](mailto:fitzies56@gmail.com)

### MAPLETON BOWLS CLUB

**Cost:** for meeting \$50.00. Rent of premises, or large gathering [Trivia] \$100.00

**Space:** Can accommodate up to 90 persons standing or 80 persons seated.

**Other:** The use of the Bar and its staff should be requested, while the use of the kitchen and/or its staff is limited and would need discussion.

**Contact:** The Club Secretary, Martin Lambe

E: [mapletonbowlsclub350@gmail.com](mailto:mapletonbowlsclub350@gmail.com) T: 0428 898734

### MAPLETON COMMUNITY HALL and SPORTSGROUND

The historic timber 109year old hall including grounds. Includes tables, chairs and a basic kitchen. Capacity is 110 persons in the hall.

To enquire email [mapletonhall@gmail.com](mailto:mapletonhall@gmail.com)

Two tennis courts managed by The Mapleton Tennis Club are available for Hire.

### MAPLETON LIBRARY COMMUNITY CENTRE

Obi Obi Road, Mapleton T: 5445 7011

E: [mapletonlibrary@gmail.com](mailto:mapletonlibrary@gmail.com)

**Cost:** meeting \$20 per hour; plus use of the kitchen \$30 per hour

**Includes:** indoor and outdoor spaces, fully carpeted indoor; small kitchen; toilet inside; data projector with screen on the ceiling; 40 chairs, folding tables available. There are also small grass areas, gazebos available, chairs can be used on the grass.

### MONTVILLE VILLAGE HALL

Our versatile hall is the perfect venue for everything from weddings to birthday parties to community gatherings. With ample space and beautiful views, you'll be sure to impress your guests.

Contact us today to make a reservation.

<https://www.montvillevillageassociation.org/village-hall-hire>

### OBI OBI HALL

Obi Obi hall is owned by the Obi Obi and Kidaman Creek communities, and operated by members of the Obi Obi and Kidaman Creek District Community Hall Association Inc.

856 Obi Obi Road, Obi Obi 4574; PO Box 276 Mapleton Queensland 4560

Calendar, floor plan and more all on the following web site

<https://obiobihall.blog/obi-obi-hall/obi-obi-hall-hire/>



**IT'S THAT TIME OF THE MONTH, WHEN COMMUNITY ORGANISATIONS' PROMOTIONAL POSTERS ARE INCLUDED.**

If your organisation has a poster, please forward for inclusion in March edition.

# Mapleton Bowls Club

Enjoy relaxed country style hospitality

Social and competitive bowls

Darts meet Wed and Fri afternoons

Great value meals every alternate Friday 6pm

Bar open Wed and Fridays

*best green on the Sunshine Coast  
everyone welcome*

[www.mapleton.bowls.com.au](http://www.mapleton.bowls.com.au)

ph: 07 5445 7913

[mapletonbowlsclub350@gmail.com](mailto:mapletonbowlsclub350@gmail.com)

5 Post Office Road, Mapleton, Queensland,  
4560.



## Not-for-profit Community Gym

We welcome all ages (15+) & fitness levels

We will help you achieve your health and fitness goals whether it is to increase fitness, stability, strength, mobility or mental health & wellbeing

- individual programs
- classes – senior strength & stability, circuit, boxing, yoga, tai chi
- qualified instructors
- flexible membership
- no lock-in contracts
- friendly & social



**Contact: Paul 0439 670 629  
Tina 0493 101 730**

**Or drop into the gym** – we are located behind the Mapleton Bowls Club overlooking the Lilyponds (5 Post Office Rd, Mapleton)  
**[www.rangecommunitygym.com.au](http://www.rangecommunitygym.com.au)**

## Mapleton Library Community Centre offers:

Over 11,000 books, magazines and DVDs for borrowing [children, young adults, large print].

JP services, laminating, internet, printing, other computer services, monthly bingo.

Workshops, events, public notice board, community brochures.

Recycling, domestic violence goods and donated food collections.

A quiet place to relax and meet friends.

Owned and staffed by volunteers

DGR status so all donations are tax deductible

**E: [mapletonlibrary@gmail.com](mailto:mapletonlibrary@gmail.com)**

**W: [mapletonlibrary.au](http://mapletonlibrary.au)**



## MAPLETON RURAL FIRE BRIGADE

**Monthly Training:** 5:30pm on the 2nd Tuesday of Month

**Monthly Meeting:** 5:30pm on the 3rd Tuesday of Month

**First Officer (all operational matters):** 0428 137927

**Fire Warden (fire permits, safety checks):** 0499 778806

**Secretary (new members, administration):** 0499 883019

**Website:** <https://www.facebook.com/mapletonruralfirebrigade/>

**E-Mail:** [MapletonRFB@gmail.com](mailto:MapletonRFB@gmail.com)

**Address:** 37 Obi Obi Road, Mapleton 4560

**Postal:** PO Box 366, Mapleton 4560

Following the recent Annual Meeting the above details are current.

## MAPLETON CRAFT GROUP

Meets every Wednesday 9am to 12noon at the Mapleton Bowls Club. Like a raft of creativity beside the Lilyponds; we gather to inspire and motivate our members for 30 years.

Your initial visit is free of charge. Come and enjoy the creative atmosphere and share a [free] morning tea with our members. Explore the variety of talent that can enrich you life. We look forward to seeing you soon!



**Zonta International is an international service organization with the mission of advancing the status of women.**

**If you are interested in becoming a member of the Zonta Club here on the Range, please contact the President Margy Henderson. E. [president@zontablackallrange.org.au](mailto:president@zontablackallrange.org.au)**

**Promotional space in 2024 Business Directory is now available.**

## MAPLETON ART

**A small group of artists meet every Thursday morning from 9am to 11am.**

**They investigate techniques and materials for continued professional artistic development.**

**If you think this group might be right for you, drop in one Thursday at the Mapleton Library Community Centre or Email: [mapletonlibrary@gmail.com](mailto:mapletonlibrary@gmail.com)**

**Currently working on the 2026 calendar to raise money for more Art in Public Spaces.**



**Kureelpa Hall**—1st Saturday of every month at 8am.

**Mapleton** 3rd Wednesday every month at 9am [in the



## **PROBUS CLUB OF NORTH BLACKALL RANGE INC**

**Venue: Mapleton Bowls Club, 5 Post Office Road, Mapleton**

The Probus Club of North Blackall Range Inc meets on the second Friday of the month from February to November at the Mapleton Bowls Club for fun, fellowship and friendship between 10am and 12noon. We have interesting guest speakers, fun outings and several special interest groups.



Annual Membership is \$65 which covers meetings for the year, Public Liability Insurance, hire of venue and morning teas. There is a once off joining fee for new members of \$25.

Interested persons are welcome to come to our meeting free for the first visit to see if it suits them.

**Community brochure and poster display** on the verandah of the

### **Mapleton Library Community Centre**

If your organisation has brochures or short term posters, consider adding them to this community service.

If you are looking for information, check out this collection.

**Currently over flowing with posters and brochures—there is something for everyone.**





## RECYCLING IN MAPLETON

**SPECTACLES** are collected by Lions from the Mapleton Library Community Centre .

### **CANS and BOTTLES - Containers for Change**

**Mapleton Bowls Club** - There is a convenient collection point which is a wheelie bin placed near the entrance. Bins can be distinguished from others by its bright blue lid.

**Mapleton State School P & C.** All your donations would be gratefully received and will go towards resources for our school and students.

**Mapleton Men's Shed** These may be left in the bins in front of the storage shed in Mapleton Forest Drive.

**Please do not crush the cans you deposit for recycling.**

### MOBILE TELEPHONES

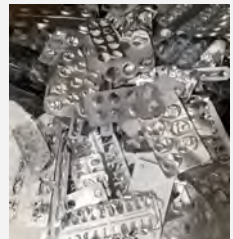
**Roger Loughnan Real Estate**, corner Post Office Road and Obi Obi Road Mapleton, is a registered drop off location for people to donate their old working phones with chargers etc. The staff will deliver these to DVSafe Phone.

**Also place in any Lion's spectacle box and these will be handed on.**

**Plastic lids from drink bottles only—**collection container on the Mapleton Library Community Centre verandah



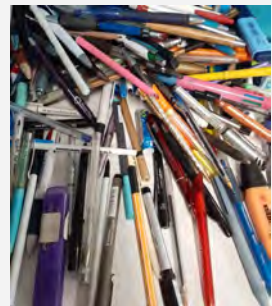
**Blister packs—**container on the Mapleton Library Community Centre verandah



**Used pens—**container on the Mapleton Library Community Centre verandah



**Tooth brushes—**container on the Mapleton Library Community Centre verandah



**Ring pulls from aluminium cans.** Lions will forward these for wheel chairs for children. Container on the Library Community Centre verandah

**YARN LIBRARY- Sewing, knitting and embroidery items to swap—** containers inside the Library Community Centre



**PLANTS –** there are stands outside where you can leave plants for someone else who might like them.

**THANK YOU** to all who have already recycled many of the above items.



## **Procedures for Range and Hinterland PopUp Community News management**

The Range and Hinterland PopUp Community News was launched in 2016.

The News has gone through many changes with no one organisation controlling the News—it is truly a community news: for the community by the community. Auspiced by the Mapleton Library Community Centre since 2016 which provides insurance, financial support and much more.

The News offers opportunity to promote events and provide information to all community groups across the Range and the Hinterland

**Thank you everyone.**

**The Range and Hinterland PopUp Community News is edited, published and distributed by volunteers.**

**There will be no discussion or correspondence on matters pertaining to the Range and Hinterland PopUp Community News.**

- All articles for the Range and Hinterland PopUp Community News are to be sent to [mapletonqueensland@gmail.com](mailto:mapletonqueensland@gmail.com)
- If it is important to have an article included in a specific edition, forward article as early as possible. Generally the cut off time for publication is noon Tuesday each week but as this is a fully volunteer publication inclusion is not guaranteed.
- Articles can be emailed at any time. Please include contact name and contact details.
- All articles are to be sent digitally unless otherwise pre-arranged.
- Pop up Community News is published weekly but open to review at any time. A short holiday over Festive Season each year to give the volunteers a well earned holiday.
- Currently Thursday night for distribution is the target time.
- No lost animals, political, religious, personal opinions or missing person notification will be published.
- Negative or derogatory comments will not be published.

Email [mapletonqueensland@gmail.com](mailto:mapletonqueensland@gmail.com) requesting guidelines.

Anyone wishing to receive the Range and Hinterland PopUp Community News, send your email address to [mapletonqueensland@gmail.com](mailto:mapletonqueensland@gmail.com)

Anyone wishing to cease receiving the Range and Hinterland PopUp Community News, send your email to [mapletonqueensland@gmail.com](mailto:mapletonqueensland@gmail.com)

**Disclaimer:** The Editor and Team assumes no responsibility or liability for the content of this publication.

**Keep informed through the web and social media**

[www.facebook.com/groups/mapletonqueensland/](http://www.facebook.com/groups/mapletonqueensland/)

[www.mapletoncommunitylibrary.com](http://www.mapletoncommunitylibrary.com)

**Remember if you wish to receive the**

**RANGE AND HINTERLAND  
POPUP COMMUNITY NEWS**

**Email [mapletonqueensland@gmail.com](mailto:mapletonqueensland@gmail.com)**

**Current circulation over 4,512**

