

RANGE AND HINTERLAND POPOP COMMUNITY NEWS

Weekly News

A community service since 2016

21 August 2025

Issue 455

WHAT IS ON THIS WEEKEND?

**** 23 August: Mapleton Country Market, 8am-12Noon, Mapleton State School car park**

DETAILS INSIDE THIS EDITION



Denis Griggs receiving the photograph of his Aircrew meeting with some of the orphans who they evacuated from South Vietnam in April 1975.

MAPLETON RSL - VIETNAM VETERANS DAY SERVICE 18TH AUGUST 2025

The Mapleton RSL Sub-branch held a Service on Monday the 18th of August 2025 to commemorate those servicemen and women who were deployed to South Vietnam. The service was held in the Mapleton Memorial Park under a warm and sunny sky with a small crowd in attendance.

This year marks the 50th anniversary of the final evacuation of civilian refugees from South Vietnam in April 1975. Many thousands of refugees were evacuated to the USA, Australia and other Allied countries. The most remarkable of these evacuations was what is known as OPERATION BABYLIFT. During this operation over 3000 orphaned babies and children were evacuated from orphanages in South Vietnam, mostly to the USA; however, approximately 250 were evacuated to Australia by RAAF aircraft. One of our Sub-branch members, Denis Griggs, was a flight engineer on a C-130 Hercules involved in this operation and he recounted his experiences during this turbulent time in the address at the service. He attended an anniversary event held at the Australian War Memorial in April this year, where Air Crew involved in the operation were reunited with some of the children that were evacuated. The Sub-branch presented Denis with a picture of his flight crew with two of these refugees who attended the event. Denis is a well respected and long serving member of the Sub-branch who is held in high esteem by all who know him, and we appreciated him sharing his experiences.

The service concluded with a morning tea held in the park provided by the Blackall Range Lions Club who generously gave up their time to provide another excellent meal for all who attended.

The Sub-branch would like to extend their thanks to the Lions club for their catering, the Mapleton Rural Fire Brigade who provided First Aid attendants for the event and to all who attended the Service for their support to the Mapleton RSL Sub-branch.

Matt Dykes, President

455th EDITION CONTENTS

Vietnam Veterans Day Service
Mapleton Movers
Earthquake
Outdoor Movie Night
Community Stall
Frog Mouth
QCCC
Carry On Up the Gang Plank
Sculpture on the Edge
Restoring Hope

Development Applications
Fauna and Flora
Community Services
Date Claims
Repeat Articles
Local Organisations' Contacts and more



MAPLETON MOVERS

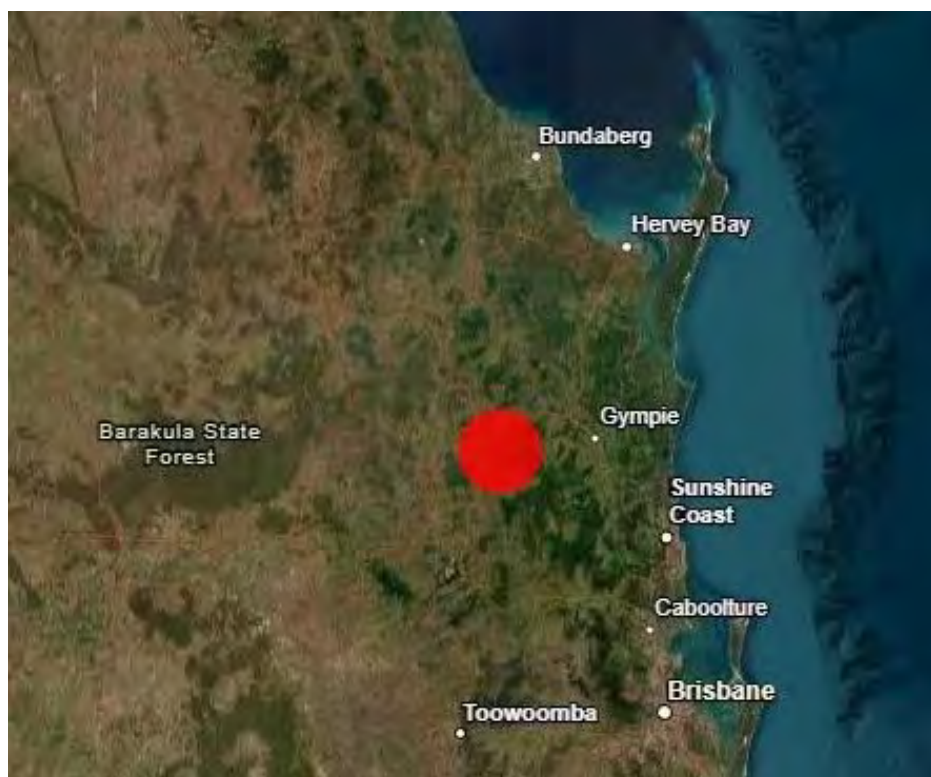
This recent photograph taken for Anita, the State Manager of Heart Foundation Walking Group with 13 of the registered 25 able to attend the photo shoot.

As Anita says "We were so impressed with your Mapleton Movers story that we would like to use it as a case study in our Heart Foundation Walking resources for Walk Organisers, to inspire them with ideas on how to help grow their groups. We'd also like to include it as part of one of our online Active Australia Innovative Challenge training and support modules, for grant recipients - to give them an example of how a good dissemination plan for promotional flyers can have great results".

Please Note: Due to ongoing works and upgrades at the Lilypond's Park, Mapleton Movers now meet on the Delicia Road side parking, opposite the Lilypond's Park.

Children's Book Week
16-23 August





QUEENSLAND EARTHQUAKE: WHAT EXPERTS PREDICT WILL HAPPEN NEXT

Geoscience Australia are currently installing monitoring equipment around Kilkivan amid warnings more powerful aftershocks may strike following Queensland's 4.9 on the Richter Scale earthquake.

Following a recent magnitude 4.9 earthquake near Kilkivan, Queensland, Geoscience Australia and other agencies are enhancing earthquake monitoring efforts in the region. These include deploying new seismometer stations, refining National Seismic Hazard Assessments (NSHA), and utilising public "Felt Reports" to improve understanding of earthquake impact and response.

New Seismometer Stations:

The University of Queensland (UQ) and Geoscience Australia are working to improve earthquake monitoring in Queensland by installing new seismometer stations in various locations. For example, new stations were recently established in Cairns and the Gold Coast, with Brisbane scheduled to receive them later this year, according to The University of Queensland.

National Seismic Hazard Assessment (NSHA):

The NSHA, which assesses earthquake ground shaking hazard across Australia, is being updated to reflect new data and align with the building code. This assessment is crucial for identifying areas with higher earthquake risk and implementing appropriate mitigation strategies. The NSHA is calculated using the OpenQuake software, which is also used in other countries for similar assessments, according to the Queensland Government.

Felt Reports:

Geoscience Australia is using a "Felt Report" system where the public can report their experience of an earthquake, providing valuable data on shaking intensity. These reports are used to create a FeltGrid, a near-real-time map of shaking intensity, which helps emergency managers understand the impact of the earthquake and inform their response.

Other Monitoring Efforts:

Emerging technologies, such as accelerometers and hydrophones (in water), are also being utilized to capture different types of seismic waves.

Importance of Monitoring:

Increased monitoring efforts are crucial for improving earthquake preparedness, understanding the frequency and severity of earthquakes in Queensland, and ultimately enhancing community safety.

<https://www.ga.gov.au/scientific-topics/community-safety/projects/neac>

BLACKALL RANGE LIONS CLUB
INVITE YOU TO

OUTDOOR MOVIE NIGHT

FEATURE MOVIE THE AUSSIE FAMILY CLASSIC,
RUNT

AN ALL INCLUSIVE COMMUNITY EVENT
BYO CHAIRS AND/OR PICNIC RUG

SAUSAGE SIZZLE (SLIDERS, SAUSAGES, CHICKEN SKEWERS),
POPCORN, ICE CREAMS, BAKED GOODIES TEA, COFFEE & MORE!

FREE ADMISSION!!

SEPTEMBER 13, 2025 - 5 PM
MAPLETON HALL - OBI OBI ROAD

ROGER
LOUGHNAN
REAL
ESTATE

MAJOR SPONSOR



MOVIE NIGHT FAQ

Do I have to register or notify my attendance?

No, however we welcome you to let us know via the QR code if attending this just give us a better idea for catering food on the night.

What should I bring along?

Warm clothing, blankets, pillows, chairs or picnic rugs, coins or a credit card for dinner, snacks or drinks purchases. BYO Food and Drinks is allowed - **NO BYO ALCOHOL!**

Will there be card payment available?

Cash is always welcome! However there will be eftpos facilities to make purchases on card on the night.

What time will the movies start?

Gates will open at 5:00pm for food and drink purchases and we will be running the film upon dark time approx 6:30pm

FOR MORE INFORMATION ABOUT MOVIE NIGHT, VISIT
[HTTPS://WWW.FACEBOOK.COM/EVENTS/762225066970800](https://www.facebook.com/events/762225066970800)



COMMUNITY STALL AT MAPLETON MARKET THIS SATURDAY

Collect community information and brochures and purchase speciality gifts.

Supports non-profit community organisations.

Volunteers manning the stall this month represent the Mapleton Bowls Club, Mapleton Craft Group, Mapleton Art, Range Gym and Fitness Centre, Mapleton Library community Centre



New Promotional free postcard. Scan the QR code and find the map showing the locations of the art works.



Gift cards for only \$5 each

Gardening Book



Range and Hinterland Gardening
Nita C Lester and Joan Dillon

Selling across the Sunshine Coast and south to Brisbane, and north to Gympie.

A useful resource for new and experienced gardeners living in sub-tropical regions.

\$25

Available: The Barn on Flaxton, La Botiga, Mapleton Post Office, Mapleton Library Community Centre, Rosetta Books Maleny, Maleny Hardware and Rural Supplies



AUTHORS ARE GIFTING ALL PROFITS TO THE COMMUNITY via Montville Village Association and Mapleton Library Community Centre

ST. GEORGE'S MALENY ANGLICAN
CHURCH PRESENTS

FROG MOUTH

Appalachian
Folk Music
with

Ally Bing
Jeremy Dunlop
& Mitch Ruggles

Voice, clawhammer
banjo, guitar, fiddle
& tin whistle



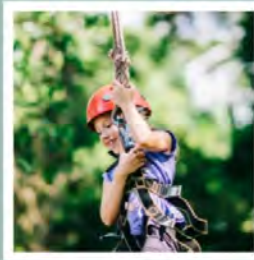
2 PM / \$25 WITH AFTERNOON TEA
SUNDAY 14TH SEPTEMBER
2 WALKERS DRIVE
MALENY ANGLICAN CHURCH



restoring  hope
Parkinson's therapy



ENJOY A 3-NIGHT FAMILY ADVENTURE AT QCCC MAPLETON FAMILY CAMP



Win a family holiday at QCCC Mapleton Family Camp! With thanks to QCCC Mapleton for generously donating this amazing prize, the winning bidder will receive a voucher for a 3-night stay at QCCC Mapleton Family Camp, from 4-7 January 2026.

This voucher includes: Bunk style accommodation (one room) All meals provided Access to on-site activities For a family of up to six people Valued up to \$1,504(!!)

Head online at <https://rhpthrapy.org.au/product/4780/> to bid on this amazing family experience, all while supporting the work of Restoring Hope Parkinson's Therapy. Online auction ends 27 August.



This weekend, we're hosting a Young Adults Retreat from a denominational network. With a full site and hopefully some glorious weather, both QCCC Mapleton and the wider Mapleton village will be buzzing - perfect for coffee catch-ups, nature walks, and quiet reflection.

Next week is packed with school camp energy. On Monday, we welcome two primary school groups:

- A Grade 4/5 cohort from Brisbane's north
- A Grade 6 camp from the Gold Coast

Then on Wednesday, the site fills even more as we welcome:

- A large Grade 5 group from Brisbane's east
- Another Grade 5 cohort from a neighbouring Brisbane school.

Meanwhile, over at Cobb and Co Campgrounds near Gympie, our Outdoor Education team will be running a Survival Camp for 200 Grade 9 students - one of our biggest expedition-style programs of the year.

**Save the Date: QCCC Mapleton Open Day
Friday 6th December 2025 | From 3:00pm**

We're excited to invite our community to the Annual QCCC Mapleton Open Day, now set in the summer months to make the most of our beautiful facilities - including four swimming pools and our outdoor movie screen. It's a chance to explore the site, meet our team, and enjoy free activities, food, and fellowship.

We've recently re-lined our Basketball Court Pool and Dive Pool, giving them a fresh new look - just in time for summer fun.

Stay tuned for more details and mark your calendars now - we'd love to welcome you here!



**Children's Book
Week
16-23 August**





Theatre on the Edge Presents!

A madcap comedy set on the high seas – from Montville to Hawaii.
 Pirates, Pickleball and Pizazz!
 And Music! From Kokomo to I Should Be So Lucky
 The Maleny Ukulele Band delights us all

3 performances:
 Saturday 6 September – 2.00pm & 7.00pm
 Sunday 7 September – 2.00pm

Lots of local talent:
 Kyleigh Simpson – co-writer and director
 Maree McArthur – stage manager and assistant director
 Rob McArthur – sound and lighting
 Ruth Kuss – Pop up bar

Cast:
 Chris Andrade, Victoria Bensted, Aleesha Dowdell, Kathleen Gilfedder, Deb Johnson, Jo Keylar, Martin Keylar, Amy Lester, John Lewis, Jeff Tasker, Lou Tasker, Niel Wark, Noel Wieden

Tickets - \$20 each – via QR code or

<https://www.trybooking.com/events/landing/1443503>
 Or contact events.mva2021@gmail.com



Call For Entries

Local, national and international sculptors are invited to enter the exhibition and competition at



29 November to 7 December 2025

Competition Prize Pool \$24,500

Entries Close 31 August 2025

The 2025 Sculpture on the Edge exhibition and competition is closing soon for entries.

Don't miss out on this opportunity to showcase your art !

Full entry details are available by clicking on the button below.

If you have any questions or concerns, please contact
sote@artsconnectinc.com.au or telephone 0448 541 889.



RESTORING HOPE, GROWING A VISION

New insulated roof

Purpose built Therapy Rooms

PWD toilet



Can you help?

Your donation today will help establish a Parkinson's Therapy and community hub in Buddina, offering evidence based speech therapy for people living with Parkinson's
All donations over \$2 are tax deductible

RECENT DEVELOPMENT APPLICATIONS IN DIVISIONS 5 AND 10

This is an initiative of Pop Up Community News aimed at providing information and heightened awareness as to developments in our region. Hopefully the information will provide a spring board should anyone wish to dive deeper into any specific application. Using the link: <https://developmenti.sunshinecoast.qld.gov.au/> or entering "development i sunshine coast" into a browser will take you to the Development i home page. Click on "Application Search" and enter the application number. Select "Details" if you want to dive deeper. The supporting documents can typically be downloaded or viewed by selecting "Application Documents" in the right hand section of the screen.

In the listings below, typically a brief editorial comment is provided after each application description. These are shown in *italics*.

DIVISION 10:

Lodged: 28/07/2025 DA#: MCU21/0307.02

20 Aspland St NAMBOUR - Other Change to Development Approval - Material Change of Use (Dual Occupancy) and Operational Works (Stormwater, Driveway, Retaining Walls & Landscaping) - Sasha Prime Development Pty Ltd - IB Town Planning. *From application: "Minor changes to the design of proposed dwelling house, including reduced height and removing building work from easement area and adding vehicle access from secondary frontage (clear of infrastructure). Design maintains traditional building character and appropriate siting on a small lot." Most of the site is covered by hard surfaces.*

Lodged: 14/08/2025 DA#: MCU25/0227

40 Mountain View Ct YANDINA - Secondary Dwelling - Michael Brooks - Pinnacle Certification. *2 bed, 2 bath secondary dwelling, skillion roof, with effluent processing area impinging onto a native*

vegetation area, plus 123M2 (approx.) shed, with new second cross over on 4388M2 lot with primary dwelling and carport.

Lodged: 14/08/2025 DA#: MCU05/0003.03

170-178 Seib Road EUMUNDI - Minor Change to Development Approval - MCU (Agriculture) - EINR Pty Ltd.- Project Urban. *Increase of Stage 2 building from 18,000M2 to 20,000M2 and flood mitigation works to compensate.*

DIVISION 5:

Lodged: 13/08/2025 DA#: OPW22/0402.01

Stage 1, 2 and 5 - 57 Bunya St MALENY - Construction Inspections Electrical and Street Lighting - Robin Russell and Associates Pty Ltd. *No documents published. Relates to Multi Lot development.*

Lodged: 12/08/2025 DA#: MCU25/0224

66 Roys Rd LANDERS SHOOT - Dwelling house including secondary dwelling - Angela and Matthew Cantarella - Ferris Town Planning. *Primary Dwelling: 6 Bed, 2ENS, 4.5 bath, 2 kitchens, dog wash, gymnasium, no garages, cables and skillion. Plus two level secondary dwelling, 2 beds, 1 bath, 3 garages, low pitch gable, 96M from primary dwelling all on just over 4ha.*

Lodged: 12/08/2025 DA#: MCU25/0225

337 Blackall Range Rd WEST WOOMBYE - Secondary Dwelling - Caitlin Murnieks - Pure Building Approvals. *Conversion of existing Packing Shed on stilts, 22 ° gable with carport to secondary dwelling, 2 bed, 1 bath with garage, approx.. 141M from primary dwelling.*

Lodged: 14/08/2025 DA#: POS25/0147

154 Palmwoods-Montville Rd PALMWOODS - BFP For Duplex - SP357435 Lots 1 & 2 - Devcon. *Administrative: Approving Plans*

Lodged: 13/08/2025 DA#: MCU25/0228 & OPW25/340 & CAR25/0523

1 Gerrard Rd EUDLO - Proposed Secondary Dwelling & Shed, plus Retrospective Approval for Shed, Earthworks and Clearing Vegetation - Nicholas Knottenbeld - Place 360 - COMBINED OPW25/0340 & CAR25/0523. *Secondary dwelling in the form of a Modular demountable structure, 1 bed, 1 bath, veranda, skillion roofs. Proposed 6M X 7M (approximate) shed, retrospective approval for existing shed, arguments for a retrospective approval for clearing of 600M2 area, and proposal for re-vegetation. Whole property is within a koala habitat overlay, some parts designated significant and most vegetation on the property, including sections of the cleared area are found within a "Matters of State Environmental Significance" overlay.*

Lodged: 14/08/2025 DA#: OPW25/0341

The Homestead 154 Neill Rd MOOLOOLAH VALLEY - Landscaping - Sparkles Alex Pty Ltd - Project Urban. *Relates to RAL23/0125, subdivision 1 lot int 8.*

A dramatic painting for one of the bin enclosures in Obi Obi Road, Mapleton.

Artist: Tom Davies



Grow Australian Plants

LOCAL

Grevillea lanigera 'Mt. Tamboritha'

A small free flowering ground cover to 40cm. Very dense shape growing close to the ground with small mid green foliage.

The flowers are pink, red and cream.

Prefers moist, well drained medium loam but will tolerate the heavier soils. Will grow successfully in full sun to part shade.

Use low phosphorus fertiliser after flowering.

Suits rockeries, borders and is widely cultivated. Native to Victoria.

Currently flowering across the region and providing a feast for the bees.



Grey shrike-thrush

Colluricincla harmonica

22 cm to 25 cm

Grey shrike-thrush pairs mate for life and maintain breeding territories of up to 10 hectares.

Identification

The grey shrike-thrush is a rather drab coloured bird, although the plumage varies throughout its extensive range. Birds are mostly grey in this region. Adult males are browner on the mantle than the female and young birds have varying amounts of rufous on the cheeks and wings.

Habitat

The grey shrike-thrush is found in forests and woodlands. It is a common and familiar bird, although some decrease in numbers has been noted around human habitation.

Distribution

Grey shrike-thrushes are found in all but the most arid regions of Australia and Tasmania, as well as on the larger off shore islands and in southern New Guinea.

Feeding and diet

The grey shrike-thrush searches for food on the ground, generally around fallen logs, and on the limbs and trunks of trees. It has a varied diet consisting of insects, spiders, small mammals, frogs and lizards, and birds' eggs and young, and some birds have been observed feeding on carrion. Fruits and seeds may also be eaten on occasion.

Communication

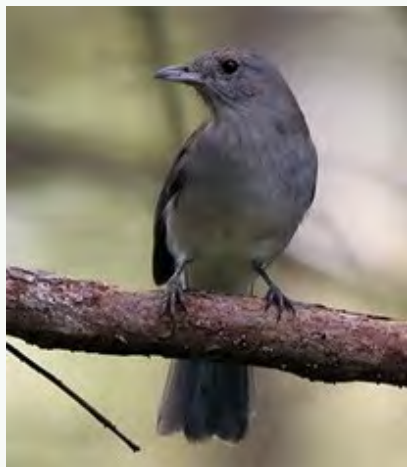
The grey shrike-thrush has a varied, rich and melodious voice. The call varies throughout its range and between individuals, but typical phrases include 'pip-pip-pip--pip-hoe', 'pur-pur-pur-kwee-yew', and a sharp 'yorrick'.

https://ebird.org/species/grysht1?siteLanguage=en_AU

Breeding behaviours

Grey shrike-thrush pairs generally remain together for life and inhabit the same areas throughout this time. Breeding territories of up to ten hectares are maintained. The nest is a cup-shaped structure of dried vegetation, and may be constructed in the same site year after year. Both birds share the nest-building and incubation duties, and both care for the young birds.

Thank you Feather Cap



nita

WEED

Cat's claw creeper

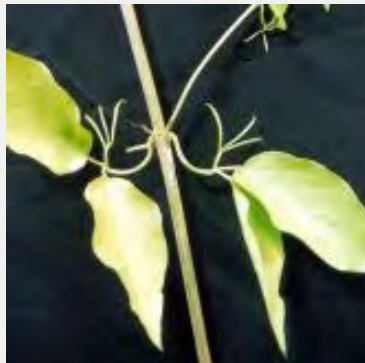
Dolichandra unguis-cati

This plant is native to the tropical dry forest of Central America, South America (Mexico to Brazil and northern Argentina) and the Caribbean.

Category 3 Restricted Matter (Biosecurity Act 2014)

It was recently ranked as the fourth most invasive alien plant species in south east Queensland, and is currently regarded as a priority environmental weed. Cat's claw creeper has the ability to completely smother native vegetation, even growing up over tall trees, and many bushland areas.

A rampant climber with stems that eventually become very robust and woody in nature. Its oppositely arranged leaves consist of two leaflets and a distinctive three-clawed tendril. Its very showy yellow flowers are tubular (4-8cm long) with five petal lobes. Its mature fruit are dark brown and strap like in appearance (15-50cm long and 8-12mm wide). These fruits contain numerous papery, winged seeds.



Community Service

JP SERVICE

Monday mornings from 8:30am to 11:30am without an appointment at the Mapleton Library Community Centre.

Or Thursday mornings 9am to 11am.

Telephone 5445 7182 for a booking in Mapleton.

WELCOME PACK FOR NEW RESIDENTS

Are you a new resident?

**Collect your pack from the
Mapleton Library Community Centre**

Borrowing hours: 1pm to 4pm week days
9am to 12noon Saturdays

What does the pack include?

- Brochures promoting community organisations
- Range Popup Community News - a free weekly news for everyone with information about the events in your neighbourhood
- List of community organisations in Mapleton, Flaxton and Montville
- Zonta Business Directory
- Recent publications such as the History of the Mapleton Bowls Club

Also available at the COMMUNITY STALL at the monthly Mapleton Country Market.

MAPLETON RURAL FIRE BRIGADE

Monthly Training: 5:30pm on the 2nd Tuesday of Month

Monthly Meeting: 5:30pm on the 3rd Tuesday of Month

First Officer (all operational matters): 0428 137927

Fire Warden (fire permits, safety checks): 0499 778806

Secretary (new members, administration): 0499 883019

Website: <https://www.facebook.com/mapletonruralfirebrigade/>

E-Mail: MapletonRFB@gmail.com

Address: 37 Obi Obi Road, Mapleton 4560

Postal: PO Box 366, Mapleton 4560

Following the recent Annual Meeting the above details are current.

ST. MARY'S ANGLICAN CHURCH

On the green, Montville

Sunday Eucharist at 8am

Wednesday Meditation with Maureen 9am

For general enquiries contact Carole Phillips at 5445 7839

Baptisms and weddings enquiries welcome.

Parish Office: 07 5499 9130

Email: maleny@anglicanchurchsq.org.au

Montville Uniting Church

Services are held each Sunday at 8.15am when a combined service is held at Maleny Uniting Church at 9.45pm. All welcome.

Minister: Rev Nathan Barton

E: minister@ourcommonlife.org.au

M: 0429 632527

The church is open as a Reflection Gallery every day from at least 10am till 3pm.

Date Claims

16-23 August Children's Book Week.

23 August Mapleton Country Market 8am to 12pm at the Mapleton State School car park. Find us on Facebook, message us on messenger or 0419 726 603.

26 August BRLUPA, Annual general meeting 6:30pm, Mapleton Library Community Centre.

29 August Mapleton Writers, 1:30pm-3:30pm, Mapleton Library Community Centre.

29 August Mapleton Bowls Club Dinner Night, 6pm.

30-31 August Brush, Body and Clay, Buderim.

5 September Mapleton Bingo, Mapleton Library Community Centre.

5 September Spirit of Papua New Guinea, 5pm, Mapleton Men's Shed.

6-7 September 'Carry on up the Gang Plank', Montville.

7 September Father's Day.

13 September Movie Night, Blackall Range Lions Club, Mapleton Community Hall.

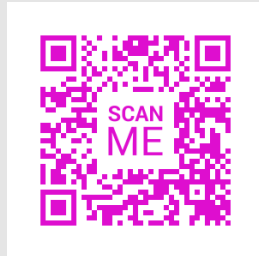
14 September 2pm St Georges concert, Maleny. Tickets at the door.

19 October Book Fair and Mini Market, Mapleton Library Community Centre.

29 November—7 December Sculpture on the Edge, Flaxton Gardens.

6 December Open Day, QCCC.

Disclaimer: The Editor and Team assume no responsibility or liability for the content of this publication.



Repeat

Spirit of Papua New Guinea - Free Local Event

Fascinating Stories from the Field: Hear firsthand from ex Patrol Officers (or Kiaps), Col Young and John Brady

Be inspired by Peter Gamgee's personal adventure in finding the Flying Dutchman (a WWII C47 plane) and the survivors' stories. Learn how a little aid can start saving lives

Mapleton Mens Shed

5 Sept, 5 for 5:30pm

Raffles, snack food provided, drinks available

Free to attend. More info and please register or donate **HERE->**

All funds raised go to support medical outpost and schools along the Ghost Mountain Trail through Papua New Guinea Tribal Foundation Pty Ltd

Made possible by Mapleton Mens Shed, Blackall Range Lions, MADCA, and friends

HINTERLAND QUARRY PLANNING SCHEME SUBMISSIONS UPDATE

The draft Sunshine Coast Planning Scheme review is now open. Residents have until Friday 19 September to have your say.

All quarries have significant impacts and therefore should have the same planning controls placed on them.

In the proposed scheme that could last for the next 20 years Sunshine Coast quarry (and asphalt plant) planning arrangements and protections are far from equal between council owned (at Dulong and Image Flat) and all other private operations in the region.



Dulong and Image Flat (including the latent asphalt plant) DO NOT have the planning safety and protections you may have thought they have. Zoned as Community Facilities, these two quarries are the lowest possible level of development assessment- Accepted Development. Any intensifications, changes or expansions requires no development assessment, no public comment allowed, no legal rights of appeal.



YOU CAN HAVE NO SAY



COUNCIL IS NOT LEGALLY REQUIRED TO NOTIFY RESIDENTS OF CHANGES



THERE'S NO USUAL CHECKS AND BALANCES IN PLACE FOR RESIDENT SAFETY OR ENVIRONMENTAL PROTECTION



THERE'S NO TRANSPARENCY OR ACCOUNTABILITY FROM COUNCIL



RESIDENTS HAVE NO LEGAL RIGHTS

All SC private quarries are zoned Rural and have the usual expected resident and environmental protections of the highest possible level of assessment-IMPACT ASSESSMENT if intensification or changes are proposed.

Impact assessment offers the OPPOSITE protections than that of ACCEPTED DEVELOPMENT!

Dulong and Image Flat quarries are considered the only two quarries in Qld that have unsafe, anomalous, unjustifiable and inequitable accepted development.

For 3 years Council has continuously ignored community demands to rectify this situation. It was a problem created by Council in 2014 and it's Council's responsibility to repair it. Council has stated it enjoys the financial and operational benefits Accepted Development offers them. Their goal is to continue this unfair advantage. Rather than repairing the quarry planning arrangements Council proposes to repeat for the next 20 years the same anomalous and unequal situation they know they should fix.

The only way we are now going to get the proposed quarry Planning Scheme arrangements reviewed is for as many people as possible to make a written submission to Council. A submission is nothing more than a letter, so everyone can do it. You can submit as many times as you want, provided your submissions cover different topics.

The process is not complicated. You are able to do it all online. You can also post a hard copy or send an email. It is a legal requirement you provide your name, residential address and postal address or email. The online system enables you to either type in your reasons or you can upload prepared documents. As the online version does not allow you to save your work, we would recommend you write out your comments in a draft first. Remember to say you "strongly object" or "strongly agree" so nothing is left to interpretation.

To help you cover the important facts we'll shortly be sharing simple and easy to understand step by step "how to guides". These will be shared widely throughout the hinterland and can be found on our Facebook page- Hinterland Quarry Action Group. If you're on our mailing list, these will be sent to you. Stay tuned and watch this space as there's lots of quarry planning information on its way to help you have your say and

ask for the necessary planning changes to make Dulong and Image Flat safer and our make our precious hinterland more protected now and well into the future.

For regular updates and to access guides to help you make a quarry submission see

- Hinterland Quarry Action Group on Facebook
- online MADCA Community Connect
- online Range Community News
- Range and Hinterland PopUp Community News
- Sunshine Coast newspapers and radio

Request to join our mailing list by emailing us at hinterlandquarry.ag@gmail.com

In the mean time you may like to check out the Sunshine Coast Council Planning Scheme review page to become familiar...

<https://www.sunshinecoast.qld.gov.au/development/planning-documents/new-sunshine-coast-planning-scheme>



**Sunshine Coast Art Group presents
BRUSH, BODY & CLAY**

Saturday, 30-31 August 2025; 8:30am -7:00pm
Buderim War Memorial Hall, 1 Main St, Buderim

Browse beautiful budget-friendly paintings, drawings, sculptures and ceramics at the Brush, Body & Clay exhibition. Choose pieces that reflect your sense of style to add a splash of panache to your home.

Meet the makers during the weekend exhibition, vote for your favourite piece and go in the draw to win one of two \$100 vouchers. From Saturday 5pm, soak up the creativity while listening to live music, glass of French bubbles in hand.

Free entry

Refreshments for sale

Keeping you connected

Council Link Sunshine Coast

Taxi to your local shops for just \$2

Our vision

Sunshine Coast Council continues to ensure people and places are connected.

Council Link is an affordable transport service available for residents aged 60 and over, people with a disability or mobility impairment and carers and minors accompanying eligible people. For a fixed fare of just \$2 each one-way trip you will be transported from your home to your local shopping centre.

Scan the QR Code for more information on the program's schedule and suburbs.

To book please call Suncoast Cabs, quoting Council Link on 07 5441 8856 by noon on the day before your trip.

TRANSPORT LEVY FUNDED

AUSTRALIA WIDE TAXI



RESTORING HOPE PARKINSON'S THERAPY

What a great afternoon! Thank you to everyone who came along and joined us at our annual Fundraising Celebration yesterday!

With emcees Scott and Christian leading the afternoon, guests were given a deeper understanding of Parkinson's Disease thanks to Glynn, Ron and Lynn sharing important facts. We also heard powerful testimonials from several members who have completed the SPEAK OUT!® program, sharing how speech therapy has helped them regain confidence, clarity, and connection with others.

Mayor Rosanna Natoli shared her support and pride in having RHPT on the Sunshine Coast, and the Choir of Sound INTENT, led by Paula, delighted us with performances of Waltzing Matilda and A Tribute to a Boy from Oz.

Super excitingly, thanks to a successful auction, led by Chaffey, together with the raffles, sales and coffee and cake donations, over \$10,000 was raised for Restoring Hope Parkinson's Therapy!!! This is a huge outcome! Of special mention, the final two Benevolent Bears raised nearly \$1,700 alone!

A huge thanks to The Barn on Flaxton for generously hosting and providing the coffee and cake; to our many volunteers, including Jane and Alison; to the Blackall Range Lions Club for all of their help at event; to the Choir of Sound INTENT and our RHPT patients for speaking with intent; to all of our donors; and to everyone who helped make the afternoon so memorable.

Together, we're helping people with Parkinson's not just speak—but be heard.

Jeshanah Erb
Client Communications
Restoring Hope Parkinson's Therapy



SOUTH EAST QUEENSLAND DRAFT PLANNING SCHEME

You're Invited!

Council is hosting a range of in-person sessions and events across the region to help you learn more about the proposed planning scheme. Come along to the option that suits you best.

Visit an in-person session

Speak to a planner (one-on-one) session: Drop-in to speak directly with a planner about the proposed planning scheme, be guided through the ePlan and ask questions. No bookings needed.

Speak to a planner (quick chat) local pop-up: Stop by one of our local shopping centre or market pop-ups for a quick chat to learn more about the proposed planning scheme and how it may affect you.

If you prefer a quieter setting for a more in-depth conversation, we suggest you attend one of our one-on-one sessions. There won't be a formal presentation, so you're welcome to drop in at any time during the session hours.

New Community forums

Come along to one of the following community forums to ask questions, share thoughts, and hear directly from Council planning experts (noting these forums won't follow a presentation format):

Sunshine Coast City Hall

Drop in to Sunshine Coast City Hall (54 First Avenue, Maroochydore) foyer anytime between 9am and 3pm to chat with a staff member about the proposed planning scheme or get help using the ePlan. **No bookings needed.**

You can download on <https://haveyoursay.sunshinecoast.qld.gov.au/newplanningscheme/information-sessions>.

Spaces are limited for the community forums listed below, so please register and let us know how many people you're reserving for.

Events Centre Caloundra, 20 Minchinton Street, Caloundra.

Please arrive at 5.00pm for a 5.30pm start and 7.30pm finish.

28

August

University of the Sunshine Coast

28 Aug 2025 10:00 AM - 28 Aug 2025 2:00 PM

University of the Sunshine Coast (market day stall, near Brasserie, Building I), 90 Sippy Downs Drive, Sippy Downs.

What do we collect?

Yarns, craft items, wools—to give to others

Postage stamps—to fund mobility devices for children

Non-perishable food items—to give to those in need

New items of clothing, bath towels, tea towels—to give to domestic violence victims

What do we sell?

Near-new books—\$4 each. Many are new releases

Plants—prices vary from \$2-\$5 each
Spent coffee grounds—donation

Unique locally designed gift cards—\$5 each

'Range and Hinterland Gardening' book—\$25

Mapleton postcards—\$1.50 each

Pot stands—\$5 each

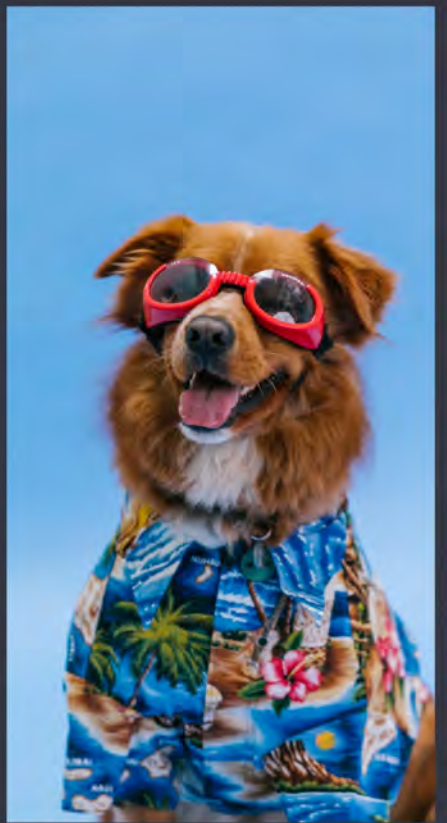
Children's books—\$10 or less



MAPLETON COUNTRY
MARKET SATURDAY
23RD AUGUST
8AM - 12PM

BRING YOUR BEST DRESSED DOG FOR A PARADE

WHEN - AT 10AM -
PLEASE MEET ON THE
FOOTPATH OF THE
MAPLETON SCHOOL FOR
A PARADE THROUGH THE
STALLS FOR JUDGING
(ALL DOGS MUST BE ON
LEADS PLEASE)



PRIZES AVAILABLE FOR SMALL AND LARGE DOGS

KINDLY DONATED BY OUR
STALL HOLDER PONGY
POOCHES, THE BARN ON
FLAXTON AND MADCA

WITH OVER 50 + STALLS
SEE YOU THERE!



Major Grants Open

Project funding for not-for-profit community groups up to \$15,000, and up to \$30,000 for infrastructure projects.

The current major grant round is open and closes on 25 August 2025.

For information on eligibility, category priorities and assessment criteria see our Community grants guidelines.

<https://www.sunshinecoast.qld.gov.au/living-and-community/grants-and-funding/grants-programs>

MAPLETON ART TRAIL





MAPLETON LIBRARY COMMUNITY CENTRE TRIVIA NIGHT AT THE MAPLETON BOWLS CLUB

What a wonderful night. Trevor and his team [image above] conducted an inspiring evening with questions that many could answer. It was the well placed tricky questions that sorted the knowledgeable from the not so knowledgeable. The winning team was a group from Lions [image below]. Thank you Jan Child for organising the Lions.

Thank you to all residents who attended. You were all very respectful and left the club so tidy, that the volunteers could head home quite early.

Thank you to the Mapleton Bowls Club volunteers, Rob and Mark who ran the bar. What would we do without you!



The winners



The successful second team



Right: the raffle winners

Thank you Karen Hardy for this excellent image record.



**OUR FUTURE IS WORTH PLANNING FOR -
PROPOSED SUNSHINE COAST PLANNING SCHEME**

Learn what the proposed planning scheme means for you and the Sunshine Coast

BRLUPA—Blackall Range Land Use Planning Association

Annual General Meeting 26th August at 6:30pm, Mapleton Library Community Centre

IMPORTANT DISCUSSION

ALL WELCOME

The proposed planning scheme is important to everyone on the Sunshine Coast. It will replace the current planning scheme and help shape our neighbourhoods and our region. It's about the places where we live, work, learn and play.

<https://haveyoursay.sunshinecoast.qld.gov.au/newplanningscheme>

**THANK YOU FOR THE GIFTED PLANTS AT THE
MAPLETON LIBRARY COMMUNITY CENTRE**

Many plants have been donated and sold recently. If you have any unwanted pot plants that someone else may desire, please donate.

Your donations give joy to others especially at times of increasing prices.

Just \$2 each or 3 for \$5 and the plants are yours.

Funds raised go to the printing of the new 'Walks on the Range' brochure and the 'Mapleton Art Trail' brochure.

Walks Trail brochures are now available at the Library Community Centre and at the Montville and Maleny Visitors' Centres.

The walks trail brochure is very popular.

RECENT DEVELOPMENT APPLICATIONS IN DIVISIONS 5 AND 10

This is an initiative of Pop Up Community News aimed at providing information and heightened awareness as to developments in our region. Hopefully the information will provide a spring board should anyone wish to dive deeper into any specific application.

Using the link: <https://developmenti.sunshinecoast.qld.gov.au/> or entering "development i sunshine coast" into a browser will take you to the Development i home page.

Click on "Application Search" and enter the application number. Select "Details" if you want to dive deeper. The supporting documents can typically be downloaded or viewed by selecting "Application Documents" in the right hand section of the screen. In the listings below, typically a brief editorial comment is provided after each application description. These are shown in *italics*.

DIVISION 10:

Lodged: 06/08/2025 DA#: MCU25/0218

250 Wappa Dam Rd IMAGE FLAT - Material Change of Use to establish a Secondary Dwelling - SaltAir Modular - URBN Town Planning Pty Ltd *2 bed, 2 bath skillion demountable on large acreage close to primary dwelling.*

Lodged: 04/08/2025 DA#: OPW25/0064.03

15, 35-53, 75-93, Lot 900 Brandons Road & 47-69 Steggalls Road YANDINA - Earthworks & Fauna Management Plan - Halcyon TF Pty Ltd - Colliers International Engineering & Design Pty Ltd. *Relates to MCU22/0394 to establish a retirement facility,*

Lodged: 11/08/2025 DA#: POS25/0128

7 Magnolia Street NAMBOUR - BFP for Dual Occupancy - Survey Plan SP354469 (2 Lots) - Simply Town Planning. *Administrative, approving plan.*

Lodged: 12/08/2025 DA#: MCU19/0277.01

27 Inalls Rd OBI OBI - Minor Change to Development Approval - Nature Based Tourism (8 Tent Sites) - Nidhi Doshi & Deepak Shamaldas Doshi - Innovative Planning Solutions. *Applicant Description of Minor Change: "Minor change – additional 2 communal yurts". A mere 25% increase over original proposal.*

Lodged: 12/08/2025 DA#: RAL25/0068

89 and 91 Blackall Tce NAMBOUR - Reconfiguring a Lot - Boundary Realignment - 2 Lots into 2 Lots - Sunshine Coast Council - Adapt Development Management Pty Ltd. *Transfers approximately 400M2 from smaller lot to larger lot, making lot sizes 776M2 and 2517M2. Area concerned is carpark to the east of Nambour hospital.*

DIVISION 5:

Lodged: 06/08/2025 DA#: RAL25/0066

435-451 & 453-461 Blackall Range Rd WEST WOOMBYE - Reconfiguring a Lot - Boundary Realignment - Stephen & Sarah Jackson C/- Murray & Associates (QLD) Pty Ltd. *No documents published.*

Lodged: 12/08/2025 DA#: REC15/0216.10

13 Hazel Pl GLENVIEW - Minor Change to Development Approval - Reconfiguration 2 Lots into 7 Lots - Natalie & Scott Sainsbury - Building Approvals United Queensland. *Application for a swimming pool.*

Mapleton Library Community Centre

BINGO

Friday 5th September

9:30am - 11:30am



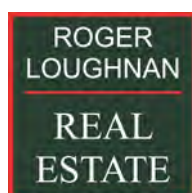
\$12 per person inc: morning tea

win cash and other prizes



*** Bookings essential**
mapletonlibrary@gmail.com or in person

Supporting local businesses that support the community



Mapleton



LOCAL VENUES FOR HIRE

KUREELPA PUBLIC HALL

Our modern and clean hall is available for hire for meetings, community events and classes.

Contact: Dianne Fitzgerald E: fitzies56@gmail.com

MAPLETON BOWLS CLUB

Cost: for meeting \$50.00. Rent of premises, or large gathering [Trivia] \$100.00

Space: Can accommodate up to 90 persons standing or 80 persons seated.

Other: The use of the Bar and its staff should be requested, while the use of the kitchen and/or its staff is limited and would need discussion.

Contact: The Club Secretary, Martin Lambe

E: mapletonbowlsclub350@gmail.com T: 0428 898734

MAPLETON COMMUNITY HALL and SPORTSGROUND

The historic timber 109year old hall including grounds. Includes tables, chairs and a basic kitchen. Capacity is 110 persons in the hall.

To enquire email mapletonhall@gmail.com

Two tennis courts managed by The Mapleton Tennis Club are available for Hire.

MAPLETON LIBRARY COMMUNITY CENTRE

Obi Obi Road, Mapleton T: 5445 7011

E: mapletonlibrary@gmail.com

Cost: meeting \$20 per hour; plus use of the kitchen \$30 per hour

Includes: indoor and outdoor spaces, fully carpeted indoor; small kitchen; toilet inside; data projector with screen on the ceiling; 40 chairs, folding tables available. There are also small grass areas, gazebos available, chairs can be used on the grass.

MONTVILLE VILLAGE HALL

Our versatile hall is the perfect venue for everything from weddings to birthday parties to community gatherings. With ample space and beautiful views, you'll be sure to impress your guests.

Contact us today to make a reservation.

<https://www.montvillevillageassociation.org/village-hall-hire>

OBI OBI HALL

Obi Obi hall is owned by the Obi Obi and Kidaman Creek communities, and operated by members of the Obi Obi and Kidaman Creek District Community Hall Association Inc.

856 Obi Obi Road, Obi Obi 4574; PO Box 276 Mapleton Queensland 4560

Calendar, floor plan and more all on the following web site

<https://obiobihall.blog/obi-obi-hall/obi-obi-hall-hire/>



LIST OF COMMUNITY ORGANISATIONS

LISTING FOR FLAXTON, KUREELPA, MAPLETON

AND MONTVILLE

Blackall Range Care Group Ltd www.rangecare.com.au

Blackall Range Lions Club

E: blackallrangelionsclub@outlook.com; [facebook.com/blackallrangelionsclub/](https://www.facebook.com/blackallrangelionsclub/) ; <http://www.brhc.org.au>

Blackall Range Visual Artists

www.blackallrangevisualartists.com.au

Blackall Range Woodcrafter's Guild Inc. Meets Montville Sports Ground 230 Balmoral Rd Montville. Open 8.00am to 11.30am Mondays to Saturdays.

Blackall Range Zonta Club Email:

membership@zontablackallrange.org.au. www.zontablackallrange.org.au

Bush and Beach Walking Group. Meets Mapleton Public House car park on Tuesdays at 7am (winter start time) and car pools.

Hinterland Quarry Action Group

Anne Veivers 0416 155 116; aveivers@iprimus.com.au

History Group montvillehistorygroup@gmail.com

Kureelpa & Dulong Community Hall kureelpahall@gmail.com

Mah-jong Wednesday weekly at Mapleton Bowls Club.

Maleny Golf Club Club address: 15 Porters Lane, Maleny

Telephone: 5499 9960 Contact name: Stephen Porter - General Manager email: gm@malenygolfclub.com.au
Website: www.malenygolfclub.com.au

Mapleton and District Community Association

madca@gmail.com

Mapleton Art Thursdays weekly at Mapleton Library Community Centre. Contact:

mapletonlibrary@gmail.com

Mapleton Bowls Club Telephone 5445 7913

www.mapletonbowlsclub.com.au

Mapleton Bridge Club Mapleton.bridgeaustralia.org

mapletoncontractbridgeclub@gmail.com

Mapleton Choir Kureelpa Hall 7pm, Mondays

Contact: themapletonchoir@outlook.com

Mapleton Country Market every 4th Saturday at the Mapleton State School car park. Contact Paula 0419 726603

email: countrymarket.mapleton@gmail.com or find us on Facebook.

Mapleton Craft Group Wednesdays 9-12noon,

Mapleton Bowls Club

Mapleton Library Community Centre

mapletonlibrary@gmail.com www.mapletonlibrary.a u

Telephone 5445 7011

Mapleton Hall and Sportsground Trustee

mapletonhall@gmail.com

Mapleton Men's Shed www.mapletonmenshed.org.au

Mapleton Movers Heart Foundation Walking Group meet at 7am every Monday, Wednesday and Friday at the Lilypond's Park carpark. Enquiries please call Donna on 0417 476768.

Mapleton State School Parents and Carers Association:

mapletonpandc@gmail.com

Mapleton Quilters Mondays 9-12 noon, Mapleton Bowls Club

Mapleton RSL Sub Branch Matt Dykes

0427263595; mdykes7@gmail.com

Mapleton Rural Fire Brigade First Officer 0428 137927, Secretary: 0499 883019

Mapleton Tennis Club mapletontennis@gmail.com
www.tennis.com.au/mapleton-tennis-club

Montville Anglican Church huesong2@gmail.com

Montville Chamber of Commerce

montvillechamber@gmail.com

Montville Masonic Lodge montville260@outlook.com

Montville Rural Fire Bridage

montville.rfb@bigpond.com

Montville School P&C msspandcpresident@gmail.com

Montville Tennis Club

montvilletennisclub1925@gmail.com WWW.ClubSpark/
Montville Tennis Club/MONTVILLE TENNIS CLUB
Inc.|Tennis Australia

Montville Uniting Church

minister@ourcommonlife.org.au

Montville Village Association

secretary.mva@gmail.com
www.montvillevillageassociation.org.au

MVA MARKET montvillemarket.mva@gmail.com

RangeCare OP SHOP 17 Obi Obi Road

Probus Club of North Blackall Range Secretary 0493 632703
nbrprobus@gmail.com

Range Community Gym and Fitness Centre

mapletongym@gmail.com www.rangecommunitygym.com.au

Range United Soccer Club

info.rangeunited@gmail.com

Sunshine Coast U3A u3aoffice@u3asunshine.org.au

The Flaxton Craft Group lkathypatterson@gmail.com

The Range Community Kindergarten

www.rangekindy.qld.edu.au

Wildlife Volunteers Association Inc (WILVOS)

Hotline 5441 6200 www.wilvos.org.au

Mapleton Community Facebook page

www.facebook.com/groups/mapletonqueensland/

Montville Community Facebook page

www.facebook.com/groups/780987252874906/

Flaxton Community Facebook page

www.facebook.com/groups/388815358233538

Happenings – Montville and surrounds email newsletter

Subscribe: www.montvillevillageassociation.org.au/
subscribe-to-happenings/
Editor.mvahappenings@gmail.com

SCHOOLS**Blackall Range Independent School**

office1@brschool.com.au

Mapleton State School

principal@mapletonss.eq.edu.au

Montville State School

admin@montvilless.eq.edu.au



**If your organisation is not listed, please let me know.
Many thanks, nita**

mapletonqueensland@gmail.com



Kureelpa Hall—1st Saturday of every month at 8am.

Mapleton 3rd Wednesday every month at 9am [in the grounds of the RangeCare Op Shop].

KEEPING OUR LOCAL BUSINESSES STRONG IS A TOP PRIORITY FOR US ALL.

If you take you mail into the Mapleton Post Office, the credit goes to the

Mapleton Post Office.

... See you inside the post office ...

THANK YOU

**Thank you to the
Blackall Range Lions Club and
Mapleton Library Community Centre
for the great initiative of collection pantry items for those
in need at present..**

**Drop off your donations at the
Library Community Centre**

Community brochure and poster display on the verandah of the

Mapleton Library Community Centre

If your organisation has brochures or short term posters, consider adding them to this community service.

If you are looking for information, check out this collection.

Currently over flowing with posters and brochures—there is something for everyone.





RECYCLING IN MAPLETON

SPECTACLES are collected by Lions from the Mapleton Library Community Centre .

CANS and BOTTLES - Containers for Change

Mapleton Bowls Club - There is a convenient collection point which is a wheelie bin placed near the entrance. Bins can be distinguished from others by its bright blue lid.

Mapleton State School P & C. All your donations would be gratefully received and will go towards resources for our school and students.

Mapleton Men's Shed These may be left in the bins in front of the storage shed in Mapleton Forest Drive.

Please do not crush the cans you deposit for recycling.

MOBILE TELEPHONES

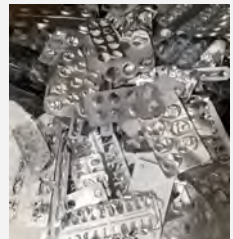
Roger Loughnan Real Estate, corner Post Office Road and Obi Obi Road Mapleton, is a registered drop off location for people to donate their old working phones with chargers etc. The staff will deliver these to DVSafe Phone.

Also place in any Lion's spectacle box and these will be handed on.

Plastic lids from drink bottles only—collection container on the Mapleton Library Community Centre verandah



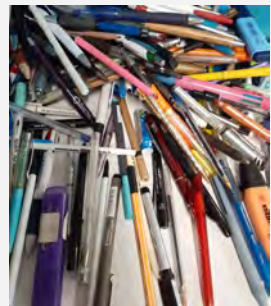
Blister packs—container on the Mapleton Library Community Centre verandah



Used pens—container on the Mapleton Library Community Centre verandah



Tooth brushes—container on the Mapleton Library Community Centre verandah



Ring pulls from aluminium cans. Lions will forward these for wheel chairs for children. Container on the Library Community Centre verandah

YARN LIBRARY- Sewing, knitting and embroidery items to swap— containers inside the Library Community Centre



PLANTS – there are stands outside where you can leave plants for someone else who might like them.

THANK YOU to all who have already recycled many of the above items.



Procedures for Range and Hinterland PopUp Community News management

The Range and Hinterland PopUp Community News was launched in 2016.

The News has gone through many changes with no one organisation controlling the News—it is truly a community news: for the community by the community. Auspiced by the Mapleton Library Community Centre since 2016 which provides insurance, financial support and much more.

The News offers opportunity to promote events and provide information to all community groups across the Range and the Hinterland

Thank you everyone.

The Range and Hinterland PopUp Community News is edited, published and distributed by volunteers.

There will be no discussion or correspondence on matters pertaining to the Range and Hinterland PopUp Community News.

- All articles for the Range and Hinterland PopUp Community News are to be sent to mapletonqueensland@gmail.com
- If it is important to have an article included in a specific edition, forward article as early as possible. Generally the cut off time for publication is noon Tuesday each week but as this is a fully volunteer publication inclusion is not guaranteed.
- Articles can be emailed at any time. Please include contact name and contact details.
- All articles are to be sent digitally unless otherwise pre-arranged.
- Pop up Community News is published weekly but open to review at any time. A short holiday over Festive Season each year to give the volunteers a well earned holiday.
- Currently Thursday night for distribution is the target time.
- No lost animals, political, religious, personal opinions or missing person notification will be published.
- Negative or derogatory comments will not be published.

Email mapletonqueensland@gmail.com requesting guidelines.

Anyone wishing to receive the Range and Hinterland PopUp Community News, send your email address to mapletonqueensland@gmail.com

Anyone wishing to cease receiving the Range and Hinterland PopUp Community News, send your email to mapletonqueensland@gmail.com

Disclaimer: The Editor and Team assumes no responsibility or liability for the content of this publication.

Keep informed through the web and social media

www.facebook.com/groups/mapletonqueensland/

www.mapletoncommunitylibrary.com

Remember if you wish to receive the

**RANGE AND HINTERLAND
POPUP COMMUNITY NEWS**

Email mapletonqueensland@gmail.com

Current circulation over 4,512

