



POP UP COMMUNITY NEWS

Mapleton and surrounds, Queensland

18 January 2024

Issue 375

ZONTA
CLUB OF
BLACKALL
RANGE INC
BUILD A BETTER WORLD
FOR WOMEN AND GIRLS

2024 Zonta Hinterland Business Directory

Mapleton
Flaxton
Montville
Palmwoods
Woombye

FREE

Look for copies at your local Post Office and the Library



Thank you Victoria Carmichael for this image titled

'Duck and Waterlily'.

375th EDITION CONTENTS

Zonta Business Directory
Montville's Got Talent - A
Talent for Murder
QCCC
Montville Uniting Church
Mapleton Bowls Club
Mapleton Hall
Art Workshops
Grant funds for Women
and Girls
Harmony Week
Lovers of Books
Development Applications

Walk
Cicadas
Supporting Businesses that
support the Community
Fauna and Flora
Community Services
Date Claims
Repeat Articles
Contact details of Local
Organisations



**Montville's Got
Talent -
A Talent for Murder!**

MONTVILLE VILLAGE
HALL

Hold the Date!

**23 & 24
March
2024**

events.mva2021@gmail.com

The poster features a black background with a blue spotlight beam shining down from the top. There are several white starburst graphics. At the bottom, there is a red splatter graphic on a blue oval. The text is in various colors and fonts, including purple, red, white, and yellow.



QCCC WEEKLY ACTIVITY: It's the last week of the School Holidays but still a busy one at QCCC. A Large Youth Camp has been in this week, departing Thursday and replaced by the first school-booking of the year which is a small leadership retreat (captains and prefects) from a private school on the Sunshine Coast.

They always love their night out at a Leadership Dinner at Bella Vista too. Over the weekend QCCC are hosting a camp for a Disability Support Service.

Monday is a final day of staff training including fire safety scenarios and then the first large school camp of the year arrives, a leadership camp from a large Gold Coast School.

Did you know QCCC Mapleton has 85 employees, making it one of the largest employers on the Blackall Range?

Friends of the Reflection Gallery

“Reflecting faith’s experience”

An activity of the Montville Uniting Church

Greetings to you Friend, especially for this New Year of 2024.

There is a wonderful new display in the Church Gallery. Our Bush Christmas display received many positive comments and we now look forward to a new display by Genevieve Clark which we assembled today.

Genevieve is a retired Principal and Teacher who kept up with technology as part of her work. Having a phone in her hand for work helped her to discover the increasingly sophisticated cameras that the iPhone offered. iPhone photography developed into a much-loved hobby. Retirement gave Genevieve and her husband opportunity to enjoy their retirement in Dundowran Beach, Hervey Bay, as well as the opportunity to travel and to farmsit and housesit in some beautiful locations in Eastern Australia. She enjoys sharing her images of places visited with friends on Facebook and if you’re a keen photographer, you can follow her on Photocrowd. Genevieve’s love of photography combines with her faith as she posts a photo and bible verse on the Facebook page of St James Lutheran Church, Hervey Bay.



Genevieve writes *“pausing and taking time to observe and photograph the natural world exposes the complex and beautiful intricacies that surround us. Think about the vastness of the sea, the moulding of the earth, the brilliance of the sky and the vast array of creatures that inhabit the differing natural environments. Their beauty and detail are astounding. How much do you wonder about how these natural wonders came into existence? As you view my first public photographic display, I invite you to reflect on nature’s form and beauty. Let the photographs take you on a journey. Each photograph is unique – capturing a moment in time. There are never two sunrises or sunsets alike; the formation of the clouds in the sky is ever changing; rainbows appear and disappear; the face of the ocean and the shore changes daily. The formation, layering and subsequent erosion of mountains, valleys, hills and plains is beyond our comprehension. The night sky is filled with wonder. Viewing an aurora dancing in the night sky is breathtaking. Animals and plants have thousands and thousands of unique and amazing characteristics. Nature is full of priceless surprises.*

The question I ask when surrounded by nature’s beauty is “how could all this be without God?” I see and feel the magnificence of God’s creation and His LOVE for me in nature. There are many words that could accompany my photographs, but I have chosen words from the Bible that reflect on God’s role as creator. I believe He has blessed us with these magnificent landscapes and scenes. As you view my photographs, I encourage you to reflect on what you believe about creation and how you have been blessed.

Thank you for your support. Please continue to pray for the Gallery and its outreach, and for the people that visit it. Grace and peace to you.

Ruth Potter and Barbara Willcocks

rpotter@westnet.com.au 07 5478 6484 or 0455 444 453

barbara.willcocks@gmail.com 07 5478 6995 or 0403 541 257

DINNER NIGHT MAPLETON BOWLS CLUB

FRIDAY 19 JANUARY

Orders taken from 6pm

Special Mains

Individual chicken pot pies with chips and salad

Sweet and sour pork with jasmine rice GF

Dessert

Fresh fruit salad with lime syrup and ice cream

Everyone is welcome

Make this a relaxing night away from
the kitchen

A 10 multi-draw raffle— be a winner

The Mapleton Country

Market hopes that you all had a festive Christmas and Happy New Year.

We wish to advise that we will start the 2024 year on February 24th from 8am to Noon.

Cheers Donna, Paula and the team.



MAPLETON PUBLIC HALL FLOOR



After several days of preparation — sanding, nail punching and filling — several coats of product were applied.

Ben Jones of 'Maleny Supreme Floors' completed this in 6 days. Thank you Ben.

Mapleton Public Hall Trustees express their gratitude to SCRC grant programme for providing the funds for this major project.

We are planning on attaching protectors to the bases of some furniture, including the 5 wooden seats.

Thank you to the regular hirers for your understanding whilst this was underway.

Thank you SCRC and Cr. David Law

The Trustees.

WORKSHOPS AVAILABLE AT MAPLETON – ORGANISED BY MAPLETON ART

Pastel – tutor Christine Clark

<https://www.christineclarkart.com.au/>

- 25 January Thursday 9am to 12:30pm. Arrive earlier to be ready by 9am to start
- Cost \$40 per person – paid in advance

Three places available

Watercolour—tutor Ann Hayes <https://annehayes.com.au/>

- Focus: dry brushing as well as tip and hints to make difficult processes easy.
- 11 February Sunday 9am to 12:30pm. Arrive earlier to be ready by 9am to start
- Cost \$45 per person – paid in advance

Three places available

Interested? Email mapletonlibrary@gmail.com

ACTIVE WOMEN AND GIRLS FUNDING PROGRAMME IS NOW OPEN

This is just a friendly reminder that the **Active Women and Girls Funding Programme IS NOW OPEN** and will **close on 6th March, 2024**. This funding is easy to apply for and has currently had little uptake from organisations within the Sunshine Coast region. Please share with your club's/organisation's Grants Officer and consider applying.

Funding can be used for the following:

- Female coach employment
- Volunteer and team management training courses
- Equipment procurement
- Volunteer recognition
- Open days
- Targeted programs etc.

Funding Amounts:

Category 1 – applicants are eligible for \$7,500 (GST exclusive)
Category 2 – applicants are eligible for \$25,000 (GST exclusive)

Please note, this is a grant program whereby applications are assessed when received and the funding unfortunately may run out prior to March. Therefore the earlier you submit your application, the better your chances will be of securing the funding!

For further information and to apply, please visit <https://www.qld.gov.au/recreation/sports/funding/active-women-girls-program#:~:text=The%20Active%20Women%20and%20Girls,apply%20under%20one%20category%20only>

I wish you all the very best with your funding applications.

Kind regards,

Shelley Heathwood | A/Sport & Recreation Officer | Div 6-10 (North)

Sports Planning &
Sunshine Coast



Development |
Council

ITEMS FOR DOMESTIC VIOLENCE VICTIMS

Special request for the following items has been received.

Tea-towels

Towels

Undies [ladies all sizes, plus children all sizes]

These would be appreciated.



Remember Lions is collecting mobile telephones. Drop any unused mobiles you have into the Library Centre and these will be collected by Lions who forward them to the domestic violence victims support group.



Dear Community,

You are invited to submit an expression of interest to host an event of activity for Harmony Week 2024.

Harmony Week will be celebrated from **Monday 18 March – Sunday 24 March**, and includes the United Nations International Day for the Elimination of Racial Discrimination on 21 March.

Sunshine Coast Council in collaboration with Nambour Community Centre Multicultural Connections Program will be supporting and promoting a week long program of activities across the region, hosted by community groups and organisations.

Harmony Week encourages everyone to experience, explore and appreciate the Sunshine Coast's wealth of cultural diversity.

Activities and events that encourage diversity, inclusion and connection are highly regarded.

Projects that celebrate the stories and history of our multicultural Sunshine Coast are also encouraged.

Your expression of interest also invites you to submit a funding request for up to \$300 to support your activity or event.

Expression of interest process

Please submit your expression of interest online and be prepared to provide the following:

Contact details

Activity name and description

Upload organisation logo and promotional images in high resolution to use for marketing

Upload your budget

Search Sunshine Coast Council web site for more details.



LOVERS OF BOOKS EVENT
WEDNESDAY 14 FEBRUARY 2024
MAPLETON LIBRARY AND COMMUNITY CENTRE
5.30PM-7.30PM

We have six authors and illustrators presenting at the Lovers of Books Event. Below is a snippet of information about three of them – all different walks of life, different perspectives on life and with very different offerings to the reading community. Come join us. Register and pay at the Mapleton Library.



Sarah Pye is an educator and author and has a doctorate in Creative Arts. She is passionate about the environment and wildlife conservation. In 2012, in the middle of the humid jungle of Borneo, Sarah met the smallest bear species in the world, the sun bear, and the man dedicated to saving them, scientist Wong Siew Te who has given his life to saving sun bears and their rainforest habitat. When she asked how she could help, Wong replied 'Do what you do best.' Those five words led Sarah on a new trajectory and the result is her book *Saving Sun Bears* and a series of children's wildlife books.



Patty Beecham has always written, and since retiring has published her first poetry collection: *The Poetry of Patty Beecham, The Light between Breath*. Her second poetry collection called *These Days I Live in Brissy* was launched on 30 August 2023 at Beerwah Library's inaugural Storytellers Festival.

Her poetry has been published in the international magazine *Prism*, winning several awards including 'The Professor Bruce Dawe, AO, Patronal Prize'. She also enjoys writing children's books, travelling, and wine in that order. She was Australia's first Roving Reporter for ABC Breakfast Radio 6124QR, and the first funeral photographer in Australia.



Lillian Muchiri was born and grew up in Kenya. She was born into a polygamous family and grew up in a traumatic environment. She went through FGM and other cultural taboos. Later, she joined the National Youth Service, trained in the paramilitary and, later again, migrated to Australia when she was 26 years old.

She pursued her degree and master degree in nursing and currently she is a clinical nurse with QLD Health.

Lillian is a published author of a book called *Looking Back to Move Forward*. She is an inspirational speaker, and mentors young people into making life choices in a manner that is meaningful, nurturing and insightful. She recently bought two acres of land in her village and currently a water tank and bore hole are being built for the village women. Her main aim is to provide shelter for women running away from domestic violence and to assist struggling kids to go through secondary school education as this is what changed her life.

DEVELOPMENT APPLICATIONS

Recent Development Applications in Divisions 5 and 10:

This is an initiative of Pop Up Community News aimed at providing information and heightened awareness as to developments in our region. Hopefully the information will provide a spring board should anyone wish to dive deeper into any specific application. Using the link: <https://developmenti.sunshinecoast.qld.gov.au/> or entering "development i sunshine coast" into a browser will take you to the Development i home page. Click on "Application Search" and enter the application number. Select "Details" if you want to dive deeper. The supporting documents can typically be downloaded or viewed by selecting "Application Documents" in the right hand section of the screen.

In the listings below, typically a brief editorial comment is provided after each application description. These are shown in *italics*.

Lodged: 09/01/2024 DA#: MCU24/0002

150-176 Dales Rd CHEVALLUM - Caretaker Accommodation - Cuthel & Pitt - Murray & Associates (QLD) Pty Ltd. *Impact Assessable. Application is a result of a Council "Show Cause Notice". Council alleges a Class 10a shed is being used as a class 1a habitable building.*

Lodged: 11/01/2024 DA#: RAL24/0003

FAST TRACK - 52 and 58 McCarthy Shute Rd, MALENY - 2 Lots Into 2 Lots Boundary Realignment - RJ and DL Nash - Hinterland Surveys Pty Ltd *782m2 transfer between lots.*

Lodged: 11/01/2024 DA#: REC08/0095.10

42 Abbots Rd and 17b Colsak Close PALMWOODS - Infrastructure Agreement - Residential subdivision (1 lot into 13 lots) - Jason Stock - Murray & Associates Qld Pty Ltd *On going from initial application July 2008, approved initially August 2010. Subsequently a series of minor changes extensions etc.*

Lodged: 12/01/2024 DA#: MCU24/0006

601 Maleny Kenilworth Rd WITTA - Nature Based Tourism 5 Sites - Nicholas Marches - RPS AAP Consulting Pty Ltd. *Application in response to a Council "Show Cause Notice". Council alleges a Tourist Park/Short Term Accommodation/Nature Based Tourism is being carried out on the site. Also alleges operational works such as excavation and/or filling have occurred on the site.*

Lodged: 12/01/2024 DA#: POS23/0263

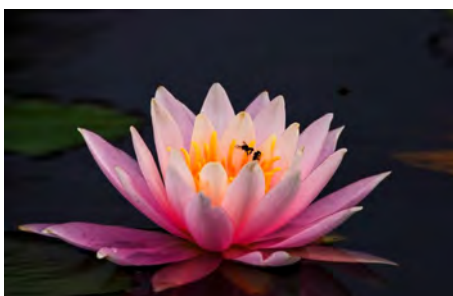
61-63 Coronation Avenue NAMBOUR - Standard Format Plan SP345482 - Reconfiguring of 2 Lots into 2 Lots - Formia Project Management. *Relates to previously approved application RAL23/0090.*

Lodged: 15/01/2024 DA#: POS23/0200

25 Low Street Yandina - BFP for 26 Multiple Dwelling Units - Survey Plan SP343620 (26 Units and Lot 200 for Drainage) - DSQ Land Surveyors. *Relates to a previously approved application MCU18/0067 at 27 Farrell St Yandina for 15 multiple dwelling units, that grew to 26 dwelling units.*

Lodged: 16/01/2024 DA#: OPW24/0012

24, 26 and 28 Ash St and 64 Coral St MALENY - Road work Stormwater Earthworks and Engineering works - SMA Property No 2 - URBN Town Planning Pty Ltd. *Operational works relating to a pre-existing approval.*





Mary Cairncross Scenic Reserve - Maleny

Enjoy a tranquil walk in lush rainforest, listen to catbirds and see pademelons along the track. Great location for views of the Glasshouse Mountains and to learn more about these unique native species in the Education Centre.

INFORMATION REQUESTED

As I write this, the sounds of dusk are loud and clear – coming in waves – cicadas. January 6pm-ish.

A few people have asked if cicadas sing at night. The truth is, in most cases, they do not. Most of the time when you hear an insect at night it is a cricket or katydid. However, there are a few cases when they will sing at night:

- In the presence of artificial light sources, like streetlights & floodlights, or a full moon. I turned on a flood light tonight to test this and it worked: a cicada started to sing.
- When it's extraordinarily hot.
- If the cicada is disturbed or attacked
- If they're overcrowded

Cicadas and crickets are both insects, but they have some distinct differences.

Cicadas are large, winged insects that are known for their loud, persistent singing, which is produced by the males. They are typically found in trees and shrubs and are most active during the day. Cicadas have a lifecycle of several years, and they spend most of their lives underground as nymphs, emerging as adults only to mate and reproduce.



Crickets, on the other hand, are smaller and have a more chirping-like sound. They are usually found in grassy areas and are most active at night. Crickets have a much shorter lifecycle than cicadas, usually living for one to two years.

Interesting scientific/medical fact:

Someday, cicadas and dragonflies might save your sight. The key to this power lies in their wings, which are coated with a forest of tiny pointed pillars that impale and kill bacterial cells unlucky enough to land on them. Now, scientists report they have replicated these antibacterial nanopillars on synthetic polymers that are being developed to restore vision.

Human eye cells have been grown on the wings of cicadas after it was found that the wings' surface kills bacteria and boosts cell growth.

A researcher at James Cook University in Cairns, began looking more closely at cicadas after noticing, while out on a walk more than a decade ago, that their wings took much longer to decompose than their bodies.

"Retinal cells don't just grow on anything. You have to have a certain surface for them to be happy."

The fact that the wings have thin membranes, are transparent and anti-reflective also helped.

University of Queensland has now become part of the research team.

The guideline for this publication is 'no lost animals' but the following is an unusual circumstance—thank you for your understanding.

Mark Lythall from National Parks (Maleny) contacted me earlier this week about a black Shetland pony that has shown up at the Day Use area of the Mapleton N P. The pony has been there for several days and Mark has had no success with locating the owner.



If you can help, email mapletonqueensland@gmail.com or make contact directly with Mark.

Sing! Sing! Sing!

Rehearsals are on Monday nights at 7pm - 9pm at the Kureelpa Hall.

We are starting 2024 with a new musical director, new music and we need you!

New members will be warmly welcomed to start with us on February 5th.

Any questions Email

themapletonchoir@outlook.com or

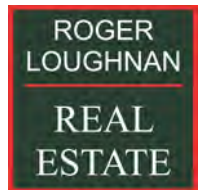
ring 0407 156 708

In 2024 we give sincere thanks to MADCA who are generously supporting the choir with a grant.



the
**MAPLETON
CHOIR**

Supporting local businesses that support the community



Mapleton



[Over time, more businesses will be included.]

LOCAL

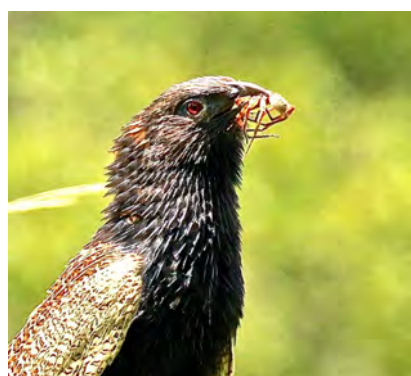
Pheasant Coucal

Centropus phasianinus

Often the only indication of the presence of a Pheasant Coucal is the deep resonant, descending *woop-woop-woop-woop-woop* call. Initially slow, then accelerating, audible for over a 1km. The female voice is deeper than the male's. They are a long-tailed, short-legged, skulking, beautifully patterned pheasant-like bird that is a member of the cuckoo family. They are usually seen running across a road or perched (particularly on wet days) on a fence post or a dead tree near long grass. Their flight is slow and clumsy with ponderous wing-beats, never far above the ground.

The sexes are alike although the female is larger than the male. They eat small reptiles, frogs, insects, eggs, young birds and sometimes chicks of domestic fowls.

Breeding occurs November to March when they nest on the ground in clumps of grass or dense vegetation. Although they are cuckoos, they are not parasitic and are the only cuckoo that builds a nest in Australia.



Top left: Non-breeding Pheasant Coucal with horn coloured bill and brown body

Top right: Non-breeding Pheasant Coucal displaying rufous barred wings and tail

Lower left: Breeding Pheasant Coucal with black bill and body

Lower right: Breeding Pheasant Coucal having a spider for breakfast

Contributor: Eric Anderson Thank you

WEED

Ipomoea indica

Morning glory, Blue morning glory

Native to tropical America, blue morning glory is a vigorous, perennial climber. It is now a common weed throughout south east Queensland.

Blue morning glory's thick, smothering growth is a common sight on many Sunshine Coast hinterland roadsides and forest edges.

- Climbs high into canopies of native vegetation.
- Creates significant shading hazard for other species.
- Twining stems choke adjacent seedlings and smother mature plants.
- Spreads by slashers, water and garden refuse.



Blue morning glory is not a prohibited or restricted invasive plant under the *Biosecurity Act 2014*. However, by law, everyone has

a general biosecurity obligation (GBO) to take reasonable and practical steps to minimise the risks associated with invasive plants under their control.

Local councils must have a biosecurity plan that covers invasive plants in their area. This plan may include actions to be taken on Blue morning glory. Some of these actions may be required under local laws. Contact Sunshine Coast Council for more information.

Banks recorded this species while on the voyage with Captain Cook.

Acmena smithii

Lilly pilly, Creek lilly pilly

Small compact large shrub to small tree with beautiful red new growth. White flowers in spring to summer. Large clusters of white or pink fruit.



Tolerates a wide variety of soils but prefers well drained moist locations. Bird attracting [both seed and nectar eaters], bees and butterflies. Useful hedging plant.

Uses in your garden: Bonsai, decorative fruit, erosion control, bird nesting plant, pollution tolerant, fast growing.

It is a species worth investigating for your Sunshine Coast Hinterland garden.



The Week of the Fungi



Thank you for these images



Community Service

JP SERVICE

Monday morning from 8:30am to 11:30am without an appointment at the Mapleton Library and Community Centre.

Or

Telephone 5445 7182 for a booking in Mapleton.

WELCOME PACK FOR NEW RESIDENTS

Are you a new resident?

Collect your pack from the
Mapleton Library and Community Centre

Hours: 2pm to 5pm week days (summer)
9am to 12noon Saturdays

What does the pack include?

- Brochures promoting community organisations
- Pop up Community News - a free weekly news for everyone with information about the events in your neighbourhood
- List of community organisations in both Mapleton Flaxton and Montville
- Zonta Business Directory
- Recent publications such as the History of the Mapleton Bowls Club

Also available at the COMMUNITY STALL at the Mapleton Country Market.

MAPLETON RURAL FIRE BRIGADE

Mapleton Rural Fire Brigade

Monthly Training: 5:30pm on the 2nd Tuesday of Month

Monthly Meeting: 5:30pm on the 3rd Tuesday of Month

First Officer (all operational matters): 0499 778806

Fire Warden (fire permits, safety checks): 0499 778806

Secretary (new members, administration): 0499 883019

Website: <https://www.facebook.com/mapletonruralfirebrigade/>

E-Mail: MapletonRFB@gmail.com

Address: 37 Obi Obi Road, Mapleton 4560

Postal: PO Box 366, Mapleton 4560

ST. MARY'S ANGLICAN CHURCH

On the green, Montville

Sunday Eucharist at 8am

Wednesday Meditation with Maureen 9am

For general enquiries contact Carole Phillips at 5445 7839

Baptisms and weddings enquiries welcome.

Contact Rev'd Deb Bird 0457 519899

MalenyAnglicanParish.com.au or angmaleny@westnet.com.au

Montville Uniting Church

Services are held each Sunday at 8.15 am, except on the 5th Sunday of a month when a combined service is held at Maleny Uniting Church at 9.45pm. All welcome.

Contact: Rev. Liena Hoffman 0490 421874.

The church is open as a Reflection Gallery every day from at least 10am till 3pm.



Date Claims

January The Heart Foundation Walking Group Mapleton Movers has Started again.

19 January Friday Dinner Night, 6pm, Mapleton Bowls Club.

2 February Bingo 9:30-11:30am, Mapleton Library and Community Centre.

2 February Friday Dinner Night, 6pm, Mapleton Bowls Club.

3 February Kureelipa Crop Swap.

10 February Montville Markets.

14 February Lovers of Books evening event, Mapleton Library and Community Centre.

14 February Meet the Division 5 Council Candidates, Montville Hall, 6pm

14 February Zonta plant sale, Maleny.

16 February Friday Dinner Night, 6pm, Mapleton Bowls Club.

21 February Mapleton Crop Swap.

24 February Mapleton Country Market, 8am –12noon, Mapleton State School car park.

4 March Meet the candidates Mapleton venue to be decided.

13 March Zonta plant sale, Maleny.

16 March Sunshine Coast Council elections.

17 March Sunday afternoon, Lovers of Opera Cinema, Mapleton Library and Community Centre.

23-24 March Montville's Got Talent - A Talent For Murder, Montville Hall.

14 April, Sunday Book Fair and Min Market, 8am to 12noon, Mapleton Library and Community Centre.

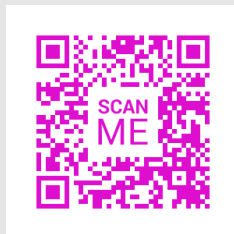
4–6 May Maleny Wood Expo.

31 May–1st June Maleny Show.

5–7 July Queensland Garden Expo.

5 October Maleny Garden Club Spring Fair.

12 October, Sunday Book Fair and Mini Market, 8am to 12noon, Mapleton Library and Community Centre.



2024 Mapleton Country Market dates

Please be aware that there are sometimes 5 Saturdays in a month but we are always the 4th Saturday.

February 24th
March 23rd
April 27th
May 25th
June 22nd
July 27th
August 24th
September 28th
October 26th
November 23rd
December Twilight TBC

GIFT BAGS FOR DOMESTIC VIOLENCE VICTIMS

As you know, in many cases, domestic violence women leave home with nothing. They arrive at the safe house with no personal items. Requests have been recorded by Mapleton Library and Community Centre volunteers: what can we do to help to make the first few days easier for these women?

The Mapleton Library and Community Centre has responded to these inquiries and hence the following is in place:

1. Home made bags have been kindly donated by a community member.
2. Items such as small tissue packs, hand cream, shampoo, conditioner, ladies' hygiene items, shower caps, nail files, hair pins and ribbons, combs, sun cream –any things you know would help you if you found yourself without, are being collected and inserted into the bags.
3. Nambour has a network of safe houses managed by Sonshine Sanctuary to which these items are being sent.

What do you do?

Drop donations into the Library Centre. At present, these items are being collected at the desk by the volunteers while the Library is open.

Where is the container to place the donations:

At present on a wooden table in the Library.

MEET THE CANDIDATES

Sunshine Coast Council Elections

Division 5 candidates for the Council Elections will be presenting at the MVA General Meeting on Wednesday 14 February in the Montville Hall, 6pm.

Division 10 candidates at Mapleton 4 March 6:30pm for 7pm. Venue to be decided.

Mapleton Library and Community Centre

BINGO

Friday 2nd
February

9:30am- 11.30am

\$12 per person inc: morning tea



Additional games included

Bring your neighbours and friends
for some fun and games



* Bookings essential
mapletonlibrary@gmail.com or in person
Staffed by your neighbours - all volunteers



Community Crop Swaps

Kureelipa 3rd February —8am while hot, during cooler months 9am, at the Kureelipa Hall. First Saturday of every month.

Mapleton 21st February and 20 March at 8:30am in th gardens of the RangeCare Op Shop. Third Wednesday of every month.

RECYCLING IN MAPLETON

Here are a few figures you will find interesting

Mapleton Bowls Club: 10,332 containers recycled during 2023.

Mapleton Men’s Shed: 14,415 containers recycled during 2023 and 72,000 containers in total since the system commenced.

Blackall Range Lions Club:

Spectacle recycling: There are have 8 collection points but easily the best contributions come from The Barn on Flaxton and the Mapleton Library and Community Centre.

This year we have collected in excess of 400 pairs on the Range, Over the past couple of years, we have sent more than 1,500 spectacles to the Lions Recycle for Sight.

As well 46 mobile phones have been collected. DV Safe Phones have recently been supplied with 7,000 phones.

Mapleton Library and Community Centre: counts have not been made but from the verandah collection buckets:

Plastic lids: Three large bags standing to waist high, have been sorted into colours and handed on.

Blister packs: Two large bags standing to waist height have been handed on for separation into foil and plastic and then recycled.



Thank you to everyone for reducing land fill and at the same time supporting the community groups and important community services.

Pat yourselves on the back!

MAPLETON LIBRARY BOOK CLUB

Venue: Mapleton Library and Community Centre

Time: Monthly, Sunday afternoons.

What to study: Sunshine Coast book club catalogue. Over 700 books to choose from, the list to choose from will be shared at first meeting.

Cost: \$12 to cover full year sign-up includes all books provided through Sunshine Coast Library. \$2 per person each month to cover Library Centre venue costs [mate’s rates].

Who do I contact to join: email mapletonlibrary@gmail.com and your interest will be forwarded to the organiser.

The Library volunteers are thrilled to host this new group.



'ALMOST VALENTINE' TRIVIA WITH ZONTA

Saturday, 10 February

A Zonta fundraiser at the Maleny RSL, 6pm for 6.30pm with Quiz Master Gerry from Trivia Time.

\$20 a head - table of 8. BYO nibbles.

Funds raised for much needed support for local projects assisting women and girls.



Invitation to artists

You are invited to be part of a community project. The working title is 'Northern Range Alphabetic Frieze'

To qualify, you must be a practicing artist on the northern end of the Blackall Range – Mapleton through to Montville.

The project involves 26 individual watercolour, colour pencil or pen and ink artworks depicting local native fauna or flora and linked with a letter of the alphabet. For example, we have to hand a lovely watercolour artwork of a koala. This will be for the letter 'k'.

**If you would like to hear more,
email mapletonlibrary@gmail.com**

Mapleton Art artists, who are conducting this project, will enjoy considering your expression of interest.

The artwork is the feature, not the letter, so the design must not interweave the letter.

A few important points:

Copyright stays with you, the artist.

Outcomes from this project will include an exhibition of the frieze, prints, and other retail items plus a few other community possibilities. Artists do not receive any monetary rewards, the rewards are being part of a community project, meeting other artists, and being part of a project that will benefit the community.

Timelines: Expressions of interest are to be in by 15 February 2024. Completed artwork to be received by 1 June 2024

If you are one of the 26 artists, you will be invited to hear about exhibition possibilities. Your input will be valued.

EXHIBITION - LANDSBOROUGH THEN & NOW

Wed 10th Jan, 10:00am - 3:00pm to Friday 22nd march
Landsborough Museum, 4 Maleny Street, Landsborough
Telephone: 5420 8600

The history and development of Landsborough through objects and pictures.

Free entry no bookings required. Landsborough Museum is open Wed-Sun 10am-3pm closed public holidays.



FIG TREE WALK - IMBIL FOREST

Stroll through rainforest with enormous fig trees on this short circuit with interesting wayside signs. Close to Little Yabba Creek if you want a refreshing dip.

This circuit is wheelchair-accessible.

In following editions more walks will be featured



SUMMER PADEMELOON SURVEY

Thursday 25th Jan, 7:30am - 9:30am
148 Mountain View Rd, Maleny

Calling all citizen scientists, join us to survey pademelons in Mary Cairncross Scenic Reserve.

Join a team of volunteers to help survey the red-legged pademelons in Mary Cairncross Scenic Reserve. Our team conducts regular seasonal surveys in the reserve to monitor pademelon numbers and behaviour

The survey takes place over approximately 1 - 2 hours with observations being made from the track. Anyone with an interest in observing native wildlife is welcome to join. Binoculars are useful. To minimise disturbance participants need to be quiet while conducting the survey.

Numbers are limited and registration essential.

Meet in front of the Rainforest Discovery Centre at 7.15am for an 7.30am start.



VOLUNTEERS NEEDED

The nursery, run by Barung is seeking volunteer staff.

Learn about native Australian plants and ecosystems by helping to collect seed, propagate plants, look after seedlings, support the retail sale of plants at their community nursery, and contribute to the health of our local landscape.

A new management committee is to hand so why not join this new team and help make a difference.

ZONTA PLANT STALLS

Zonta hold monthly plant stalls in the Maleny Community Centre Kiosk between 8:00am to 3:00pm. You will be amazed at the variety of plants on sale. Do drop by and chat and support the local projects assisting women and girls.

Wednesday 14th February

Wednesday 13th March



LOOKING TO BE PART OF OPEN STUDIOS 2024?

The ArtsConnectInc committee are rather excited that we can soon invite you to participate in Open Studios Sunshine Coast 2024. The dates are locked in as the 18th - 26th May 2024. Right now that may feel like it is a long way off, however for those of you who have participated in the past you will know it will come very fast. To advertise in the Guide, volunteer or get involved in sponsorship, please go to Open Studios Website

Participation is open to current members of Arts Connect Inc with studios or galleries within the Sunshine Coast Council region.

The event is divided into two regions, the Hinterland and Coast regions. Both have a focus weekend, during the 9 days, plus the option to open on the days in between.

This year the open weeks are:
The Coast- 18th - 19th May 10am-4pm.
The Hinterland - 25th - 26th May 10am-4pm.
Registrations close on February 2

Participants will only be open on one weekend but may choose to open during the week on days selected in the registration form. These dates will appear in the printed guide, therefore participants must commit to being open on those dates once the guide has gone to print.

If you are looking to participate, in the coming few weeks please prepare:
a high quality high resolution photo of yourself (professional one preferred)
3-4 high resolution photographs of your work and if possible shots of you doing the work - email them if they won't upload with your registration.

A brief (70 word) description of your arts practice.

Public liability insurance/ check whether your current insurance covers public liability
Some things to think about are: Why you want to participate? (Is it for sales, increased exposure, to attract a particular audience, host workshops, or simply to show your work and engage with the art-loving community?) This should also inform the way that you write your bio and prepare your studio.

We are also planning a workshop in early 2024 to help artists prepare themselves so that they can make the most of this opportunity.

We do hope you are interested in coming about this year and sharing your work.

Lea Parkes
Open Studios Co-ordinator
openstudios@artsconnectinc.com.au

Community brochure and poster display on the verandah of the

Mapleton Library and Community Centre.

If your organisation has brochures or short term posters, consider adding them to this community service.

If you are looking for information, check out this collection.

Currently over flowing with posters and brochures—there is something for everyone.

The new Zonta business directory is to hand

Recent Development Applications in Divisions 5 and 10:

This is an initiative of Pop Up Community News aimed at providing information and heightened awareness as to developments in our region. Hopefully the information will provide a spring board should anyone wish to dive deeper into any specific application. <https://developmenti.sunshinecoast.qld.gov.au/> or entering "development i sunshine coast" into a browser will take you to the Development i home page. Click on "Application Search" and enter the application number. Select "Details" if you want to dive deeper. The supporting documents can typically be downloaded or viewed by selecting "Application Documents" in the right hand section of the screen.

In the listings below, typically a brief editorial comment is provided after each application description. These are shown in *italics*.

First some housekeeping:

Last edition DA# POS23/0229 was mentioned and noted that there was no published supporting documentation. An inquiry was made to Council and a very obliging gentleman explained the application related to the "sealing" of the subdivision plan which related to DA#: RAL21/0101. I have suggested Council cross reference the initiating application when reporting subsequent procedural applications.

Lodged: 11/12/2023 DA#: MCU23/0341

30 Jensen Rd NINDERRY - Secondary Dwelling - Adam Stephens - C/- Plan A Town Planning Pty Ltd *Existing structure, formal application for use as a dwelling.*

Lodged: 11/12/2023 DA#: REC16/0085.05

47 Petrie Creek Road ROSEMOUNT - Extension To Currency Period - Reconfiguring 1 Lot into 21 Lots & Roadworks, Stormwater, Drainage Works, Earthworks, Landscaping, Signage and Vegetation Removal - E Pelgen & J Vincent - Murray & Associates (QLD) Pty Ltd *Approval currency period had expired - application to reinstate.*

Lodged: 12/12/2023 DA#: MCU22/0075.02

185-205 Diddillibah Rd WOOMBYE - Minor Change to Approval - Tourist Park - Highgate Developments Pty Ltd - Murray & Associates (QLD) Pty Ltd

Lodged: 12/12/2023 DA#: OPW23/0536

34 Fern Gully PI MOOLOOLAH VALLEY - Vehicle Crossover - Steven & Elizabeth Mason

Lodged: 12/12/2023 DA#: OPW23/0537

55A Old Orchard Dr PALMWOODS - Electrical Reticulation and Street Lighting - Millwell Services Pty Ltd

Lodged: 13/12/2023 DA#: RAL23/0125 & OPW23/0549

The Homestead 154 Neill Rd MOOLOOLAH VALLEY - Reconfigure a Lot (1 into 8 Lots) - Sparkles Alex Pty Ltd C/- Project Urban Combined OPW *8 Lots all over 4000sqm*

Lodged: 15/12/2023 DA#: MCU22/0260.03

2 Industrial PI YANDINA - Minor Change - Transport Depot and Warehouse and Operational works for Landscaping and Engineering works (Earthworks, Stormwater, Driveway and Parking) - MPL Family Investments Pty Ltd - Adapt Town Planning and Development Management Pty Ltd *Reconfiguring areas.*

Lodged: 18/12/2023 DA#: RAL23/0128

71 Main St MONTVILLE - Reconfiguration of Lots by Boundary Realignment, 2 lots into 2 lots - Peter and Gail Molloy - Danya Cook Town Planning *Slight boundary realignment.*

Lodged: 13/12/2023 DA#: POS23/0131

44-48 Upper Wakefield St WOOMBYE - Reconfiguration of a Lot (1 Lot into 2 Lots & Easement) - SP340039 - Murray & Associates *No supporting documents published.*

Lodged: 21/12/2023 DA#: MCU23/0360

261 Eumundi-Kenilworth Rd EERWAH VALE - Function Facility (Wedding Venue) - Eerwah Vale Mountain Park Pty Ltd - Danya Cook Town Planning

Lodged: 20/12/2023 DA#: MCU23/0356 & OPW23/0564

COMBINED - 40 Central Park Dr YANDINA - Extension to existing Medium Impact Industry - ATW Properties Pty Ltd - Adams & Sparkes Town Planning & **OPW23/0564** - Landscaping, Vehicle Crossover, Car Park - AWT Properties Pty Ltd - Adams & Sparkes Town Planning

11 Cunningham Crescent NAMBOUR - BFP SP345321 - Dual Occupancy - Murray & Associates *Extensions to existing building.*

Lodged: 22/12/2023 DA#: MCU23/0362 & OPW23/0569

3-7 Old Gympie Rd YANDINA - Material change of Use Child Care Centre - Acaso Pty Ltd - Covestone Pty Ltd - Daynain Pty Ltd - Project Urban & **OPW23/0569** Roadworks, Drainage Work, Landscaping, Stormworks, Clearing Vegetation, Roadworks - Acaso Pty Ltd - Covestone Pty Ltd - Daynain Pty Ltd - Project Urban *Childcare facility for 98 children.*

Lodged: 22/12/2023 DA#: OPW23/0570

7 Crescent Road EUMUNDI - Vegetation Clearing for Proposed Driveway - Lorraine Alice Hall & Clive Lesley Victor Irvine - Stroud Homes *Driveway and Parking Pad*

Lodged: 01/01/2024 DA#: RAL24/0002 & OPW24/0004

39-41 Chevallum Rd PALMWOODS - 1 Lot into 2 Lots - Accord Events Pty Ltd - COMBINED **OPW24/0004** & Vegetation Clearing, Roadwork, Drainage, Stormwater, Earthworks, Water & Sewerage Infrastructure, Landscaping, Electrical and NBN - Accord Events Pty Ltd *2025M2 lot into 1 X 1063M2 & 1 X 962M2*


Lodged: 22/12/2023 DA#: MCU24/0001

366 Reesville Rd REESVILLE - Town Planning Consent Application to Extend an Existing Rural Resort by Adding Two (2) Cottages One (1) Chapel Accommodation for Stable Hand and Additions to Games Room - Pelco Qld Pty Ltd - Alan Holliday Pty Ltd - COMBINED 1991/10031 *Impact Assessment - Expansion of existing facility*

Ticketed event
Doors open 5:30pm


Lovers of Books
Wednesday 14th February 2024
Mapleton Library and Community Centre

www.trybooking.com/events/landing/1160437



Featured speakers:
Patty Beecham, Fiona Lawley, Kerryn Lawley
Peta Miller, Lillian Muchiri, Dr Sarah Pye

\$10 pp
bookings essential
for catering



The annual Lovers of Books held at the Mapleton Library and Community Centre returns on Wednesday 14 February at 5.30pm.

As always, we have great speakers and illustrators who will be talking about their travels in the world of writing, illustrating and getting published.

The entry fee is \$10 per person and you can book either directly at the Mapleton Library and Community Centre where there is an attendance sheet available, or via Trybooking at <http://www.trybooking.com/events/landing/1160437>.

Included in the entry fee are nibbles and a drink. Subsequent drinks can be purchased.



WHAT'S HAPPENING AT THE KINDY

We are excitedly getting everything ready for our new cohort of children! We will be holding a 'Meet the Teachers' playdate morning on Friday, 19 January for our 2024 cohort to meet each other before their first official day of kindergarten on Monday, 22 January. There will be lots of new faces but also some familiar ones as some children return for another year of kindergarten. We're excited to see everyone soon!

Amongst the new faces are also some new staff. As you may have seen on our webpage and/or Facebook page, we are welcoming three new staff members this year.

Our Early Childhood Teacher, Fiona Doherty, comes with a wealth of experience with over 20 years in the Early Childhood sector across the Sunshine Coast and beyond. Through her teaching, she inspires in children a compelling desire to give their best, learn, cooperate and flourish.

Thanks to our larger cohort, we also welcome an additional Educator in local, Liza Ellis. Liza is passionate about assisting in facilitating an open, consistent and nurturing learning environment. Liza will work alongside our returning Educator, Lyndi Bond, who will be beginning her 21st year at the Range Kindy!

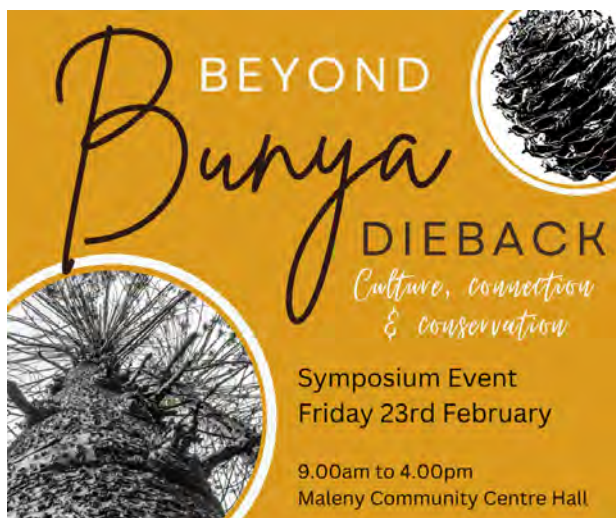
We also welcome Kim Palmer to the new role of Service Manager as well as Administrator. Kim also works at two other community kindergartens on the coast, and holds a deep understanding of kindergarten operations with around 20 years experience in the early childhood sector.

With so much experience across the team, and their strong alignment to The Range Kindy's values, we have full confidence in this new team and are so excited for the year ahead!

Beyond Bunya Dieback Symposium and More!

We are thrilled to share info about our upcoming initiative: the "Beyond Bunya Dieback - Culture, Connections, and Conservation" program, set to unfold in February and March 2024.

At the heart of this program is a full-day Symposium on Friday, 23rd February 2024 in Maleny, featuring an impressive line-up of speakers, including traditional owners, researchers, soil pathologists, conservationists, and an international presentation from Tiakina Kauri.



This Symposium promises to be an enriching experience, offering insights into the challenges of Bunya Dieback and innovative conservation strategies.

But that's not all! The Beyond Bunya Dieback program extends beyond the symposium, featuring a range of events, including art exhibitions, conservation and cultural yarning circles and guided walks on Country with First Nations people. These additional events aim to provide a comprehensive and immersive experience, fostering a deeper understanding of the Bunya tree's cultural significance and the challenges it faces.

LIST OF COMMUNITY ORGANISATIONS

A COMBINED LISTING FOR FLAXTON, KUREELPA, MAPLETON AND MONTVILLE

Blackall Range Care Group Ltd www.rangecare.com.au

Blackall Range Lions Club E: blackallrangelionsclub@outlook.com; facebook.com/blackallrangelionsclub/ ; <http://www.brhc.org.au>

Blackall Range Visual Artists www.blackallrangevisualartists.com.au

Blackall Range Woodcrafter's Guild Inc. Meets Montville Sports Ground 230 Balmoral Rd Montville. Open 8.00am to 11.30am Mondays to Saturdays.

Blackall Range Zonta Club Email: info@zontablackallrange.org.au
www.zontablackallrange.org.au

Bush and Beach walking group. Meets Mapleton Public House car park on Tuesdays at 7am (winter start time) and car pools.

Hinterland Quarry Action Group

Anne Veivers 0416 155 116; aveivers@iprimus.com.au

History Group montvillehistorygroup@gmail.com

Kureelpa & Dulong Community Hall kureelpahall@gmail.com

Mah-jong Telephone 5478 6303 Mapleton Bowls Club.

Mapleton and District Community Association

(MADCA) madca.inc@gmail.com <https://www.facebook.com/madca4560>

Mapleton Art Thursdays weekly at Mapleton Library and Community Centre. Contact: mapletonlibrary@gmail.com

Mapleton Bowls Club Telephone 5445 7479
www.mapletonbowlsclub.com.au

Mapleton Bridge Club Mapleton.bridgeaustralia.org
mapletoncontractbridgeclub@gmail.com

Mapleton Choir Kureelpa Hall 7pm, Mondays Contact:
themapletonchoir@outlook.com

Mapleton Country Market every 4th Saturday at the Mapleton State School car park. Contact Paula 0419 726603 email: countrymarket.mapleton@gmail.com or find us on Facebook.

Mapleton Library and Community Centre

mapletonlibrary@gmail.com www.mapletoncommunitylibrary.com
Telephone 5445 7011

Mapleton Craft Group Wednesdays 9-12noon, Mapleton Bowls Club

Mapleton Hall and Sportsgrounds mapletonhall@gmail.com

Mapleton Men's Shed www.mapletonmenshed.org.au

Mapleton Movers Heart Foundation Walking Group meet in the afternoons every Monday, Wednesday and Friday at the Lilypond's carpark for enquiries call 0408 756353

Mapleton Quilters Mondays 9-12 noon, Mapleton Bowls Club

Mapleton RSL Sub Branch Matt Dykes
0427263595; mdykes7@gmail.com

Mapleton Rural Fire Brigade Telephone 0499 778806; 0499 883019

Mapleton Tennis Club mapletontennis@gmail.com
www.tennis.com.au/mapleton-tennis-club

Montville Anglican Church huesong2@gmail.com

Montville Chamber of Commerce

montvillechamber@gmail.com

Montville Masonic Lodge montville260@outlook.com

Montville Rural Fire Bridage montville.rfb@bigpond.com

Montville School P&C msspandcpresident@gmail.com

Montville Uniting Church minister@ourcommonlife.org.au

Montville Village Association secretary.mva@gmail.com
www.montvillevillageassociation.org.au

MVA MARKET montvillemarket.mva@gmail.com

RangeCare OP SHOP 17 Obi Obi Road

Probus Club of North Blackall Range Secretary 0493 632703
nbrprobus@gmail.com

Range Community Gym and Fitness Centre
mapletongym@gmail.com www.rangecommunitygym.com.au

RANGE United Soccer Club info.rangeunited@gmail.com

Sunshine Coast U3A u3aoffice@u3asunshine.org.au

Tennis Club montvilletennisclub1925@gmail.com

The Flaxton Craft Group lkathypatterson@gmail.com

The Range Community Kindergarten

www.rangekindy.qld.edu.au

Wildlife Volunteers Association Inc (WILVOS)

Hotline 5441 6200 www.wilvos.org.au

Mapleton Community Facebook page

www.facebook.com/groups/mapletonqueensland/

Montville Community Facebook page

www.facebook.com/groups/780987252874906/

Flaxton Community Facebook page

www.facebook.com/groups/388815358233538

Happenings – Montville and surrounds email newsletter

Subscribe: www.montvillevillageassociation.org.au/subscribe-to-happenings/ Editor.mvahappenings@gmail.com

SCHOOLS

Blackall Range Independent School

office1@brschool.com.au

Mapleton State School principal@mapletonss.eq.edu.au

Montville State School admin@montvilless.eq.edu.au

**If your organisation is not listed,
please let me know. Many thanks, nita**

mapletonqueensland@gmail.com





RECYCLING IN MAPLETON

SPECTACLES are collected by Lions at the Mapleton Library and Community Centre and the Mapleton Bowls Club.

CANS and BOTTLES - Containers for Change

Mapleton Bowls Club - There is a convenient collection point which is a wheelie bin placed near the entrance. This bin can be distinguished from others by its bright blue lid.

Mapleton State School P & C. All your donations would be gratefully received and will go towards resources for our school and students.

Mapleton Men's Shed These may be left in the bins in front of the storage shed in Mapleton Forest Drive.

RangeCare All fund raised will improve services for their clients. 360-362 Flaxton Drive Flaxton; 36 Doolan Street, Nambour; 17B Bean Street, Maleny.

Please do not crush the cans you deposit for recycling.

MOBILE TELEPHONES

Roger Loughnan Real Estate, corner Post Office Road and Obi Obi Road Mapleton, is a registered drop off location for people to donate their old working phones with chargers etc. The staff will deliver these to DVSafe Phone. **Also place in any Lion's spectacle box.**

Plastic lids from drink bottles only—collection container on the Mapleton Library Centre verandah



Blister packs—plastic container on the Mapleton Library Centre verandah



Used pens—plastic container on the Mapleton Library Centre verandah

Tooth brushes—plastic container on the Mapleton Library Community Centre verandah

YARN LIBRARY- Sewing, knitting and embroidery items to swap—container inside the Library Centre



PLANT LIBRARY – there is a stand outside where you can leave you plants some one else might like.

THANK YOU to all who have already recycled many of the above items.



Procedures for Pop Up Community News management

The Pop Up Community News was launched in 2016. The News has gone through many changes with no one organisation controlling the News—it is truly a community news: for the community by the community. Auspiced by the Mapleton Library and Community Centre since 2016 which provides insurance, financial support and much more.

The News offers opportunity to promote events and provide information to all community groups right across the Range and the surrounding hinterland

Thank you everyone.

The Pop Up Community News is edited, published and distributed by volunteers.

There will be no discussion or correspondence on matters pertaining to the Pop Up Community News.

- All articles for the Pop Up Community News are to be sent to mapletonqueensland@gmail.com
- If it is important to have an article included in a specific edition, forward article as early as possible. Generally the cut off time for publication is 12noon Tuesday each week but as this is a fully volunteer publication inclusion is not guaranteed.
- Articles can be emailed at any time. Please include contact name and contact details.
- All articles are to be sent digitally unless otherwise pre-arranged.
- Pop up Community News is published weekly but open to review at any time. A short holiday over Festive Season each year to give the volunteers a well earned holiday.
- Currently Thursday night for distribution is the target time.
- No lost animals, political, religious, personal opinions or missing person notification will be published.
- Negative or derogatory comments will not be published.

Email mapletonqueensland@gmail.com requesting guidelines.

Anyone wishing to receive the Pop Up Community News, send your email address to mapletonqueensland@gmail.com

Anyone wishing to cease receiving the Pop Up Community News, send your email to mapletonqueensland@gmail.com

Keep informed through the web and social media

www.facebook.com/groups/mapletonqueensland/

www.mapletoncommunitylibrary.com

Remember if you wish to receive the

POP UP COMMUNITY NEWS

Email mapletonqueensland@gmail.com

Current circulation over 4,254

