



POP UP COMMUNITY NEWS

Mapleton and surrounds, Queensland

15 February 2024

Issue 379

WHAT IS ON THIS WEEKEND?

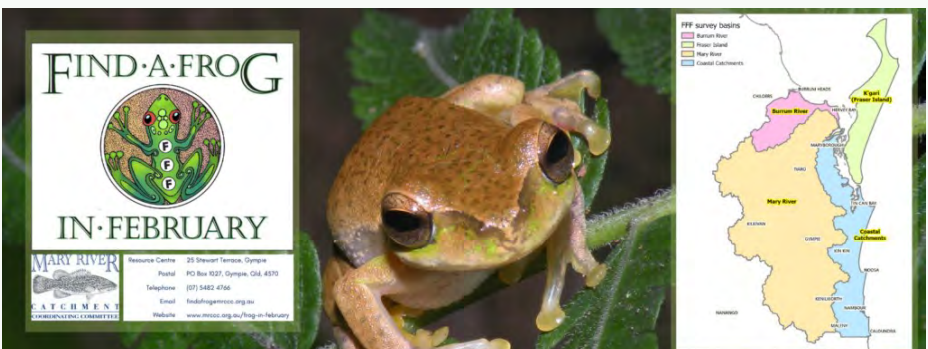
**** 'Hinterland: Beyond the visible', Gympie Art Gallery.**

More details within this edition.



Tim Tam Day falls on February 16 each year. It is well known to all that Tim Tam biscuits are a national treasure for Australians. It is then no surprise that they have taken out one day from the national calendar to celebrate their love for this delicious confection and enjoy eating Tim Tam biscuits in different ways. It is the perfect day to learn how one can enjoy eating Tim Tams in new and creative ways.

Elizabeth—how wonderful—thank you and see you on Friday.



Find a Frog in February is a citizen science programme facilitated by the Mary River Catchment Coordinating Committee (MRCCC) for the Mary, Mooloolah, Maroochy, Noosa, Burrum Rivers and coastal areas communities. It aims to raise awareness about frogs, their habitat needs, the threats they face and the actions we can take to care for them and our natural world for the long-term health of our support system.

MRCCC will be facilitating a number of frog workshops and surveys throughout the month of February. Come along and join the Coordinator, Eva Ford as she talks all things frog and then hone your frog finding skills during the group surveys.

For more information: <https://wildlife.org.au/event/find-a-frog-in-february/>

377th EDITION CONTENTS

National Tim Tam Day
Frogs
Mapleton Bowls Club
Dinner Night
Health Tips from the
Community Gym
Quarry
Gympie Art Gallery
QCCC
Maleny Arts Council

Development Applications
Material Recovery Facility
Trees for Koalas
Fauna and Flora
Community Services
Date Claims
Repeat Articles
Contacts for Local
Organisations

DINNER NIGHT MAPLETON BOWLS CLUB

FRIDAY 16 FEBRUARY

Orders taken from 6pm

Special Mains

Jane's Chicken curry and rice

Guinness Pie with chips and salad

Dessert

Lemon blueberry slice and ice cream

Rum plum pudding and custard

Everyone is welcome

Make this a relaxing night away from
the kitchen

A 10 multi-draw raffle– be a winner



Seeds to Leaves

An Autumn micro exhibition of
artistic jewellery, small objects & prints

Inspired by the saying *"from little things big things grow,"* this uplifting exhibition celebrates seeds and leaves. Guest printmaker Kim Herringe captures the beauty of botanicals, adding layers of colour to this immersive experience. Prepare to be inspired as the wonder of nature and the creativity of artists collide.


ADORN
Sunshine Coast

1 MAR - 31 MAR 2024
Fri to Mon 10am – 4pm
171-183 Main St Montville

 **OPENING EVENT**
5PM FRIDAY 1 MAR 2024
Free - RSVP via Humanitix



SENIOR EXERCISE AND FITNESS TIPS

Extract taken from HelpGuide - [Senior Exercise and Fitness Tips - HelpGuide.org](https://www.helpguide.org/articles/fitness/senior-exercise-and-fitness-tips.php)

No matter your age, it's never too late to get fit. These easy tips will help you get started safely and make it fun.



What are the benefits of exercise for older adults?

There are many reasons why we tend to slow down and become more sedentary with age. It may be due to health problems, weight or pain issues, or worries about falling. Or perhaps you think that exercising simply isn't for you. But as you grow older, an active lifestyle becomes more important than ever to your health.

A recent Swedish study found that physical activity was the number one contributor to longevity, adding extra years to your life - even if you don't start exercising until your senior years. But getting active is not just about adding years to your life, it's about adding life to your years.

Getting moving can help boost your energy, maintain your independence, protect your heart, and manage symptoms of illness or pain as well as your weight. Regular exercise is also good for your mind, mood, and memory.

Physical health benefits

Helps you maintain or lose weight. As metabolism naturally slows with age, maintaining a healthy weight is a challenge. Exercise helps increase metabolism and builds muscle mass, helping to burn more calories.

Reduces the impact of illness and chronic disease. People who exercise tend to have improved immune and digestive functioning, better blood pressure and bone density, and a lower risk of Alzheimer's disease, diabetes, obesity, heart disease, osteoporosis, and certain cancers.

Enhances mobility, flexibility, and balance. Exercise improves your strength, flexibility and posture, which in turn will help with balance, coordination, and reducing the risk of falls. Strength training also helps alleviate the symptoms of chronic conditions such as arthritis.

Mental health benefits

Improves sleep. Quality sleep is vital for your overall health. Regular activity can help you fall asleep more quickly, sleep more deeply, and wake feeling more energetic and refreshed.

Boosts mood and self-confidence. Exercise is a huge stress reliever and the endorphins produced can actually help reduce feelings of sadness, depression, or anxiety. Being active and feeling strong naturally helps you feel more self-confident.

Does amazing things for the brain. Activities like Sudoku or crossword puzzles can help keep your brain active, but little comes close to the beneficial effects of exercise on the brain. It can help brain functions as diverse as multitasking and creativity and can help prevent memory loss, cognitive decline, and dementia. Getting active may even help slow the progression of brain disorders such as Alzheimer's disease.

Senior's Strength & Stability Classes

WHERE: Range Community Gym & Fitness Centre
5 Post Office Rd, Mapleton (at rear of Mapleton Bowls Club)

WHEN: Monday & Wednesday
10.00am - 11.00am
Tuesday & Thursday
2.45pm - 3.45pm

COST: \$5.00 per session

This is a small, supervised, strength training class for older adults with chronic conditions or for those who are new to strength training and prefer a more supervised session.

For more information call Paul on 0439 670 629 or Tina on 0493 101 730.



HINTERLAND QUARRY

Stay informed and follow Hinterland Quarry Action Group (HQAG) on Facebook and Instagram - Hinterland Quarry Action Group- for updates on the quarry tendering process and their information gathering efforts.

Expressions of Interest to operate Dulong and Image Flat quarries by private companies has closed. Sunshine Coast Council procurement team will assess proposals.

It's understood tender documents have not been released as yet, but the SCRC do still expect the project to be completed by the end of this financial year.

In order to seek necessary quarry factual information, HQAG is currently making formal Right To Information applications to relevant Queensland State Government and Sunshine Coast Council authorities.

In the lead up to the March local elections, HQAG is also actively informing all divisional and mayoral candidates throughout the Sunshine Coast Council region about Dulong and Image Flat quarry issues and the community and environmental needs related to these.

Thank you to the contributor of this information: Keeping the Pop up Community News readers informed.

The wild women from WILVOS will be at the Mapleton Country Market on Saturday 24th February from 8am to midday. As Roslyn explains "Survival is not easy for our wildlife. As we see healthy animals being injured or killed, it makes wildlife carers a little apprehensive when releasing rehabilitated wildlife back in the wild. Many of these animals - birds, marsupials, reptiles and monotremes such as echidnas - have often been in the care for many months"

To find out how you can help pop into the market at the Mapleton School Carpark and say hello to Rozzie and the Gang. (The Mapleton Country Market is proudly a founding member of the Hinterland Market Trail and now auspiced by MADCA)



GYMPIE REGIONAL GALLERY WHAT'S ON

Gympie
Regional Gallery



Hinterland: Beyond the visible

A collective of regional artists whose work responds to, and re-imagines, the diverse and dramatic landscapes of the Noosa and Cooloola region.

Coffee and Conversation: Saturday 17 February, 2pm



Paper: All Stitched Up

Papermakers and Artists Queensland

A contemporary view of papermaking and paper showcasing an array of paper art and techniques, where stitching is an integral part of the design.

**Exhibition on view:
22 February - 23 March**



Birdlands

Celebrate our region's diverse birdlife from the Wallum heathlands to the avian intensity of Lake Alford. Local artist Zela Bissett will take you on a joyful papermaking and felt journey with our feathered friends.

**Papermaking Masterclass:
Sunday 25 February.**

**Exhibition on view:
22 February - 23 March**



QCCC WEEKLY ACTIVITY

QCCC WEEKLY ACTIVITY: The first half of this weekend will again be about orchestra with another Brisbane-based school onsite for the Music Camp. On Sunday a school arrives from Toowoomba, one of our favourites as they've been coming for decades and their program used to incorporate a night at Flaxton's Le Relais Bressan Restaurant when it was open, for a French immersion evening. This is a Grade 6 camp stretching out over three nights. On Monday morning they will be joined by a school from Brisbane's north for their Grade 7 Camp. A big changeover day on Wednesday and incoming is one of our bigger client schools, who use all QCCC venues and expeditions for a sequential program of Outdoor Education and Music Camps. They hold their Grade 7 Camp at Mapleton and describe the outcomes this way:

The focus of the Year 7 camp and activities is community building and reciprocity. Students attend the Rainforest Campus of QCCC Mapleton, close to one of the traditional venues of the Bunya Festival, the largest gathering of Aboriginal people prior to colonisation. Incorporating a range of outdoor education and cultural awareness activities at Mapleton's Triballink Aboriginal Activity Centre, the students spend one night in residential accommodation and experience a one-night introduction to camping. The aim of the camp is to build relational proximity between peers and teachers, have fun together and build personal and social capability through beginner level activities such as the flying fox, canoeing, bushwalking and abseiling.



MALENY ARTS
COUNCIL PRESENTS

COURTENAY CLEARY AND ALEX RAINERI IN RECITAL

A promotional image for a recital. It features two young musicians, a man and a woman, in a dark setting. The man is on the left, looking down, and the woman is on the right, playing a violin. The background is dark with some light highlights.

Hear two of Australia's leading artists of their generation, violin and piano, playing works by Beethoven, Schumann and Respighi.

SUNDAY 10TH MARCH @ 2.00PM

Maleny Community Centre
Tickets www.malenyartscouncil.com

The logo for Maleny Arts Council, featuring a stylized mountain range and the text "Maleny Arts Council".

MALENY ARTS COUNCIL

We are very excited about our 2024 season with four diverse programs showcasing the talents of nationally and internationally acclaimed artists, all performed in the intimacy of the Maleny Community Centre.



Our first recital is on **Sunday 10 March** highlighting the talents of two of Australia's leading artists of their generation - Courtenay Cleary (violin) and Alex Raineri (piano), performing works by Beethoven, Schumann and Respighi.

On **Sunday 30 June** we are presenting a unique event "Puccini's Women" - a hot-blooded hybrid of drama and opera, featuring renowned soprano Vanessa West who will perform nine of Puccini's most popular arias.

On **Friday 19 July** we are thrilled to have achieved a significant coup for Maleny. Internationally acclaimed concert pianist Piers Lane will be performing all of Chopin's Nocturnes in the Maleny Community Centre. This is a performance not to be missed.

Later in the year we will be announcing details of our feature Jazz performance to be held on **Sunday 13 October**.



MURF - MATERIAL RECOVERY FACILITY

<https://www.sunshinecoast.qld.gov.au/Council/Planning-and-Projects/Infrastructure-Projects/Nambour-Waste-Precinct-Project>

Nambour waste precinct project

The Nambour waste facility is being upgraded with construction and improvements to be completed in the next three years.

Guided by the Sunshine Coast Resource Recovery Strategy, we are working towards our goal to be a zero net emissions organisation by 2041. Aiming for a cleaner, greener future and a sustainable Sunshine Coast.

One of the ways we are doing this is to move towards a circular economy approach to waste management. This is where products and materials keep circulating in the economy for as long as possible.

Project scope

The Nambour waste precinct is being upgraded to sustainably manage our region's future waste and move towards a circular economy. More than \$83 million of work will be completed in the next 3 years.

Included are:

- a new state-of-the-art Materials Recovery Facility, also known as a MRF (sounds like murf)
- New resource recovery centre and landfill improvements.
- A signalised traffic intersection will be installed at Cooney Road and Nambour-Bli Bli Road for the safety of all road users.

The facility will also sort paper and cardboard at a staggering 98 per cent purity – the highest quality of any Australian facility. MuRF is the wonderful result of vision from Sunshine Coast Council, and collaboration between all three levels of government, which provided a combined \$40.6m in funding.

Materials recovery facility (MRF)

At the MRF mixed recycling from yellow-lid bins are taken to be sorted and separated into recyclable fractions:
paper and cardboard
differing grades of plastic, glass, steel and aluminium.

These materials are then ready for manufacturers to make new products.

There is more information on the Council web site—link above.

Recent Development Applications in Divisions 5 and 10

This is an initiative of Pop Up Community News aimed at providing information and heightened awareness as to developments in our region. Hopefully the information will provide a spring board should anyone wish to dive deeper into any specific application. Using the link: <https://developmenti.sunshinecoast.qld.gov.au/> or entering "development i sunshine coast" into a browser will take you to the Development i home page. Click on "Application Search" and enter the application number. Select "Details" if you want to dive deeper. The supporting documents can typically be downloaded or viewed by selecting "Application Documents" in the right hand section of the screen.

In the listings below, typically a brief editorial comment is provided after each application description. These are shown in *italics*.

Lodged: 07/02/2024 DA#: RAL24/0004

164 Panorama Dr ROSEMOUNT - 164,196 Panorama Dr ROSEMOUNT, 19 Kerada Rd, ROSEMOUNT - 19 Kerada Rd ROSEMOUNT - Boundary Realignment (3 into 3) - Eagle Surveys Pty Ltd - Eagle Surveys Pty Ltd.

Lodged: 05/02/2024 DA#: OPW23/0358.02

Nambour Christian College 2 McKenzie Rd WOOMBYE - Minor Change to Development Approval - Pathway Extension, Landscape Plans - Matt Folker - Covey Associates Pty Ltd. *Probably related to approved DA#: MCU23/0073*

Lodged: 09/02/2024 DA#: MCU23/0079.01

144 Mount Mellum Rd MOUNT MELLUM - Minor Change to Development Approval - Secondary Dwelling - Sarah & Lawson Katiza - Brennan Planning Pty Ltd. *Proposed secondary dwelling moves outside of a Bush Fire Overlay Zone. See MCU23/0079. Simplified design, from 3 bedrooms to 2.*

Lodged: 08/02/2024 DA#: RAL24/0005 & OPW24/00041

6 Hobson St PALMWOODS - Reconfigure a Lot 1 into 2 - Chris Love - Danya Cook Town Planning COMBINED OPW24/0041 & Earthworks, Stormwater, Landscaping - Reconfigure a Lot 1 into 2 - Chris Love - Danya Cook Town Planning COMBINED RAL24/0005. *Block split. One 2180M2 lot with existing house into 2 lots, 1335M2 containing existing developments (house and shed), and one 845M2 new lot.*

Lodged: 09/02/2024 DA#: OPW24/0044

15 Don Napier Rd EUMUNDI - Road Work, Drainage Work, Stormwater, Earthworks, Access Driveway, On-Site Car Parking, Pedestrian and Bicycle Facilities - James Douris - Murray & Associates (QLD) Pty Ltd. *In conjunction with approved DA#: MCU23/0158 for outdoor sports facility.*

Lodged: 12/02/2024 DA#: OPW24/0047

709 Aherns Rd CONONDALE - Earthworks - Karen and David Fuller. *In conjunction with applications commencing RAL19/0087*

Lodged: 12/02/2024 DA#: OPW19/0320.02

52 Henebery Road BURNSIDE - Extension to Currency Period - Road work, Drainage work, Landscaping, Stormwater & Earthworks - Warilda Properties Pty Ltd - Covey Associates Pty Ltd. *Related to DA#: REC15/0230*

Lodged: 12/02/2024 DA#: MCU06/0198.01

St Johns College 31 Valley View St BURNSIDE - Minor Change to Development Approval - Indoor Recreation - St Johns College - Bartley Burns. *Main change to raise the height restriction on the grandstand from 12.02M to 15M.*

Lodged: 13/02/2024 DA#: OPW24/0049

Elizabeth St NAMBOUR - Road work, Stormwater, Earthworks, Landscaping, Clearing Vegetation - Webcon Pty Ltd.

BINGO

**Friday 1st
March**

9:30am- 11.30am

\$12 per person inc: morning tea



Additional games included

**Bring your neighbours and friends
for some fun and games**



*** Bookings essential**
mapletonlibrary@gmail.com or in person
Staffed by your neighbours - all volunteers

Maleny Show Society invites you to an evening of family fun, entertainment and delicious food.

A ticket includes:

- 1 x meal ticket to be used at one of two food trucks onsite. (Gluten Free available)
- 1 x kid's meal ticket per child registered
- 1 x drink ticket (optional for alcohol for over 18's only*)
- Music entertainment - open mic afternoon, opening band & main band
- Unlimited children's entertainment (jumping castle & inflatable slide)
- Unlimited fairy floss
- Unlimited rides on mechanical bull

The evening's entertainment will be an open mic afternoon followed by our main performer the 'Tennessee Lights' Band. Maleny Apex will be running the main bar from 3pm - until late where you can purchase drinks for unbeatable prices. Meet our local entrants for 2024's Maleny Show Girl. Come dressed in your "Best Western" Country attire for your chance to win some lucky prizes
Saturday, 16 March 2024 - 3:00pm until Midnight

Dairy Pavilion, Maleny Showgrounds 13 Maleny Stanley River Road.

Maleny Show: <https://tickets.lup.com.au/malenycountrybash2024?cat=CAT-REGISTRATION>

Below: The Tennessee Lights Band



INTERNATIONAL WOMEN'S DAY EVENT MARCH 8 AT SECRETS ON THE LAKE FROM 7:30AM.

Join us as we celebrate International Women's Day with special guest speaker Emma Thomas CEO of Sunshine Coast Council. Enjoy a delicious breakfast and hot beverage provided by Secrets on the Lake. On entry you will receive a lucky door ticket. We have raffles and an auction raising funds for Zonta Club of Blackall Range & Maleny Neighbourhood Centre. There will be a fashion parade by Luna Liberty Boutique to delight.

It will be a fabulous morning celebrating with your friends and colleagues. Tickets are \$35 which includes Breakfast, Tea/Coffee & Lucky Door Ticket.

Poster in the repeat section near the end of this edition.

Sunday 3rd March

Clean Up Australia Day

Clean Up Australia Day is an annual event that encourages communities across the country to come together and participate in cleaning up their local environments. Volunteers gather to pick up rubbish, remove debris, and engage in various environmental improvement activities.

Check out what is happening in your area: <https://www.cleanup.org.au/supporting-councils>

Montville: A koala habitat tree planting is being planned on this date

The Hinterland Bush Links is planning to plant 200 food and habitat trees for koalas. The team will provide guidance and encouragement so come along in sun safe clothing and gloves.

Register: <https://events.humanitix.com/community-koala-habitat-planting-day>



Take along something to swap, and share at:

Mapleton Community Crop Swap Wednesday 21st February

Mapleton Swap held monthly, including the holiday season, on the 3rd Wednesday from 9.00am in the gardens at the RangeCare Op Shop.

Kureelpa Crop Swap Saturday 2nd March

Held the first Saturday of every month at 9am in the cooler months and 8am in the hotter months, at the Kureelpa and Dulong Community Hall, corner Jewett Road and Nambour-Mapleton Road, Kureelpa.

LOCAL

Yellow-tailed Black-Cockatoo

Calyptorhynchus funereus

Plant it and they will come. I am referring to the power of Banksias for attracting Yellow-tailed Black-Cockatoos to your yard. They are a large, slender, dark cockatoo 55-65cm long with pale yellow cheek patches and tail panels and a distinctive wailing call. In males the skin around the eye is pinkish-red and the bill darkens with age. While in females the skin around the eye is grey and the bill is off-white. The juveniles look like the adult females but are best distinguished by continuous rasping, begging calls. Food includes seeds of Eucalypts, Banksias, Hakeas, Grevilleas and exotic pines.

The Cockatoos are particularly attracted to the Banksias when the seeds are maturing in the cones. However, a bonus is that the flowers are also favoured by Honeyeaters and Lorikeets.

In my yard in Flaxton successful plants have included:

Coastal Banksia (*Banksia integrifolia*) a shapely tree to 20m tall but often less. Note they take to pruning if the size is a worry.

Dallachy's Banksia (*Banksia plagiocarpa*) a spreading shrub up to 4m tall that grows on Hinchinbrook Island and the nearby mainland.

Dwarf Banksia (*Banksia oblongifolia*) a spreading shrub 1- 2m high.



Top left: Male Y-T Black-Cockatoo extracting seeds from the cone of a Coastal Banksia

Top Right: Female Y-T Black-Cockatoo extracting seeds from the cone of a Dallachy's Banksia

Opposite: Y-T Black-Cockatoos searching for cones on a Dwarf Banksia



Contributor: Eric Anderson

Hymenocallis littoralis

Spider lily

USES: Beautiful in groups as a mass display of flowering colour. Suitable for borders, difficult spots where others plants have not been successful such as under trees, large pots, walkways.

PLANTING: Spider lilies prefer moist conditions and are suited to coastal and wet areas around water features and low lying areas of the garden.

CARE: Mulch and water well, especially during dry periods. If plants become crowded, simply dig out excess plants and plant elsewhere or share with the neighbours.

Reportedly approved by the fire service for planting near houses as they have low flammability.



Contributors: Joan Dillon and nita

WEED

Erigeron karvinskianus

Seaside daisy

Robust yet dainty groundcover loves to grow, flower, and thrive almost anywhere. Delicate white daisy flowers and soft ferny foliage. Plant between rocks and into paved areas, where it will self-seed and spread happily.

When we first arrived in Mapleton, we found a lovely specimen at a local market. It spread like wildfire. Many years down the track, we are still trying to remove it from the garden.



WEED

LANTANA CAMARA

A rough textured and usually prickly shrub with oppositely arranged leaves. Its dense flower clusters consist of numerous small tubular flowers (9-14mm long and 4-10mm across). These flower clusters are borne on stalks originating in the leaf forks.

A much branched, upright arching or scrambling shrub that usually grows 2-4m tall and forms dense thickets. It can occasionally grow like a vine if given support by other vegetation, in which case it can reach up to 15m in height.

Native to Mexico, Central America, the Caribbean and tropical South America. Note: The lantana populations that have become naturalised in **Australia and other parts of the world are thought to have originated from various cultivated hybrids.**

With all the recent rains, this species will 'pull out'. Easy to 'see' at present, as there are flowers.

STATE DECLARATION

Category 3 - Must not be distributed or disposed. This means it must not be released into the environment unless the distribution or disposal is authorised in a regulation or under a permit.



There are hybrids sold in nurseries. Labels often say, 'will not spread' but there are reports that even the 'hybrid' varieties, under the right conditions, will become an environmental weed.



Community Service

JP SERVICE

Monday morning from 8:30am to 11:30am without an appointment at the Mapleton Library and Community Centre.

Or

Telephone 5445 7182 for a booking in Mapleton.

WELCOME PACK FOR NEW RESIDENTS

Are you a new resident?

Collect your pack from the
Mapleton Library and Community Centre

Hours: 2pm to 5pm week days (summer)
9am to 12noon Saturdays

What does the pack include?

- Brochures promoting community organisations
- Pop up Community News - a free weekly news for everyone with information about the events in your neighbourhood
- List of community organisations in both Mapleton Flaxton and Montville
- Zonta Business Directory
- Recent publications such as the History of the Mapleton Bowls Club

Also available at the COMMUNITY STALL at the Mapleton Country Market.

MAPLETON RURAL FIRE BRIGADE

Mapleton Rural Fire Brigade

Monthly Training: 5:30pm on the 2nd Tuesday of Month

Monthly Meeting: 5:30pm on the 3rd Tuesday of Month

First Officer (all operational matters): 0499 778806

Fire Warden (fire permits, safety checks): 0499 778806

Secretary (new members, administration): 0499 883019

Website: <https://www.facebook.com/mapletonruralfirebrigade/>

E-Mail: MapletonRFB@gmail.com

Address: 37 Obi Obi Road, Mapleton 4560

Postal: PO Box 366, Mapleton 4560

ST. MARY'S ANGLICAN CHURCH

On the green, Montville

Sunday Eucharist at 8am

Wednesday Meditation with Maureen 9am

For general enquiries contact Carole Phillips at 5445 7839

Baptisms and weddings enquiries welcome.

Contact Rev'd Deb Bird 0457 519899

MalenyAnglicanParish.com.au or angmaleny@westnet.com.au

Montville Uniting Church

Services are held each Sunday at 8.15 am, except on the 5th Sunday of a month when a combined service is held at Maleny Uniting Church at 9.45pm. All welcome.

Contact: Anita Monro (Rev. Dr)

Minister on Supply, Blackall Range Uniting Church

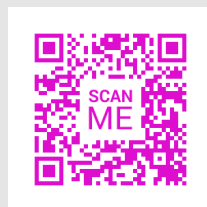
E: minister@ourcommonlife.org.au

M: 0409 273 059

The church is open as a Reflection Gallery every day from at least 10am till 3pm.

Date Claims

- 16 February** National Tim Tam Day.
- 16 February** Friday Dinner Night, 6pm, Mapleton Bowls Club.
- 18 February** Book Club, 1pm, Mapleton Library and Community Centre.
- 21 February** Wednesday, Mapleton Crop Swap, 9am RangeCare Op Shop gardens.
- 24 February** Mapleton Country Market, 8am –12noon, Mapleton State School car park.
- 25 February** 3pm Harp Wonderland concert St Georges-in-the-Hills, 2 Walker Drive Maleny.
- 26 February** Monday, Mapleton History Group, 6:30pm to 8:15pm, Green Room, Mapleton Public House.
- 1 March** Bingo 9:30-11:30am, Mapleton Library and Community Centre.
- 3 March** Sunday, Clean up Australia.
- 3 March** Montville, Planting food and habitat trees for koalas.
- 4 March** Meet the Division 10 Council candidates, Mapleton Bowls Club 6:30pm for 7pm.
- 8 March** International Women's Day.
- 8-9 March** Sunshine Coast Windbourne venues.
- 13 March** Zonta plant sale, Maleny.
- 16 March** Sunshine Coast Council elections.
- 17 March** Sunday afternoon, Lovers of Opera Cinema, Mapleton Library and Community Centre.
- 23 March** Mapleton Country Market, 8am –12noon, Mapleton State School car park.
- 23-24 March** Montville's Got Talent - A Talent For Murder, Montville Hall.
- 14 April, Sunday** Book Fair and Min Market, 8am to 12noon, Mapleton Library and Community Centre.
- 4–6 May** Maleny Wood Expo.
- 31 May–1 June** Maleny Show.
- 5–7 July** Queensland Garden Expo.
- 5 October** Maleny Garden Club Spring Fair.
- 12 October, Sunday** Book Fair and Mini Market, 8am to 12noon, Mapleton Library and Community Centre.
- 24 October** Lions Welcome to the Hinterland Dinner, Flaxton Gardens.



**Electoral
Commission**
QUEENSLAND

<https://www.ecq.qld.gov.au/how-to-vote/how-to-cast-your-vote/postal-voting>

**Postal votes applications now open for the
local government elections.**

THE VOGUE PRESENTS **SATURDAY 9TH MARCH**

THE HOUSE OF BLUES

• **THE BLUES JUMPERS**

• **THE SPIRITS BLUES BAND**

• **VIX & THE SLICK CHIX**

GRAND OPENING

SATURDAY 9TH MARCH - LICENSED BAR - SHOW STARTS AT 7PM TILL LATE -
 TICKETS VIA BOOKING WEBSITE
 96 CURRIE STREET NAMBOUR - BESIDE THE ROYAL GEORGE HOTEL
<https://www.trybooking.com/COWEH>

\$25 cover charge
 ONLINE \$30 on door



**The Vogue Theatre Grand Opening
 March 9, 7pm**

Blues night heralds Grand Opening of *The Vogue*

The much-awaited grand opening of *The Vogue* – formerly the historic *Vogue Theatre* – in Nambour is set for Saturday, March 9, promising an unforgettable night of blues music. The newest live music hub on the Coast is all set to host an exciting lineup of blues bands from 7pm.

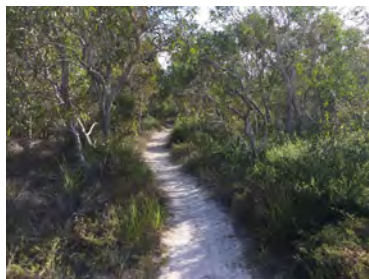
Music enthusiasts can look forward to performances by The Blues Jumpers, The Spirits Blues Band, and Vix & The Slick Chix. The event promises an exhilarating atmosphere, complemented by a licensed bar to enhance the experience.

The venue at 96 Currie Street, next to the Royal George Hotel, is geared up to make a grand entry into Nambour’s cultural scene.

Tickets for this blues-filled evening are available online at www.trybooking.com/COWEH.



Our Annual General Meeting is on 8th March. The Guest Speaker will be Hon. Robert Skelton MP.



**Kathleen McArthur Conservation Park -
 Currimundi**

Unwind on a tranquil springtime ramble through flowering coastal heath at Currimundi Lake (Kathleen McArthur) Conservation Park, where local birdlife welcomes you with song.



Maleny Dark Skies Update

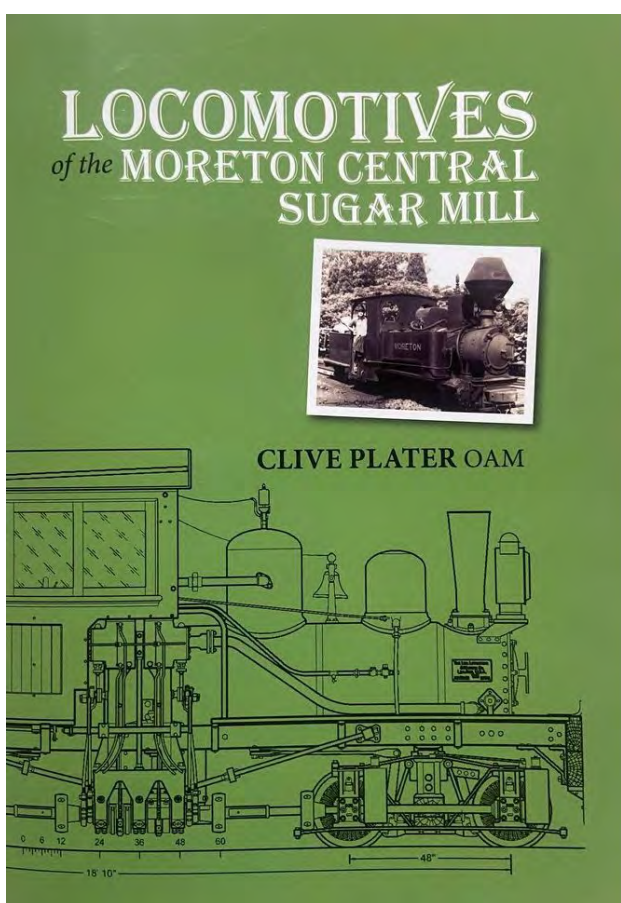
In exciting news, the Sunshine Coast Council is pursuing the declaration of a Reserve through the International Dark Sky Places Programme.

To find out what this means:

[https://www.sunshinecoast.qld.gov.au/environment/sustainability-and-climate-change/establishing-a-proposed-sunshine-coast-dark-sky-reserve?](https://www.sunshinecoast.qld.gov.au/environment/sustainability-and-climate-change/establishing-a-proposed-sunshine-coast-dark-sky-reserve?fbclid=IwAR3uiPgk55IN02IVmP9SDEyf7b77B6NBsZ2cJ13O3AmeX0PbWrXR54JxG5g)

[fbclid=IwAR3uiPgk55IN02IVmP9SDEyf7b77B6NBsZ2cJ13O3AmeX0PbWrXR54JxG5g](https://www.sunshinecoast.qld.gov.au/environment/sustainability-and-climate-change/establishing-a-proposed-sunshine-coast-dark-sky-reserve?fbclid=IwAR3uiPgk55IN02IVmP9SDEyf7b77B6NBsZ2cJ13O3AmeX0PbWrXR54JxG5g)

You'll get a chance to have your say in mid-2024!



Nambour Museum Book Launch February 24 at 10am

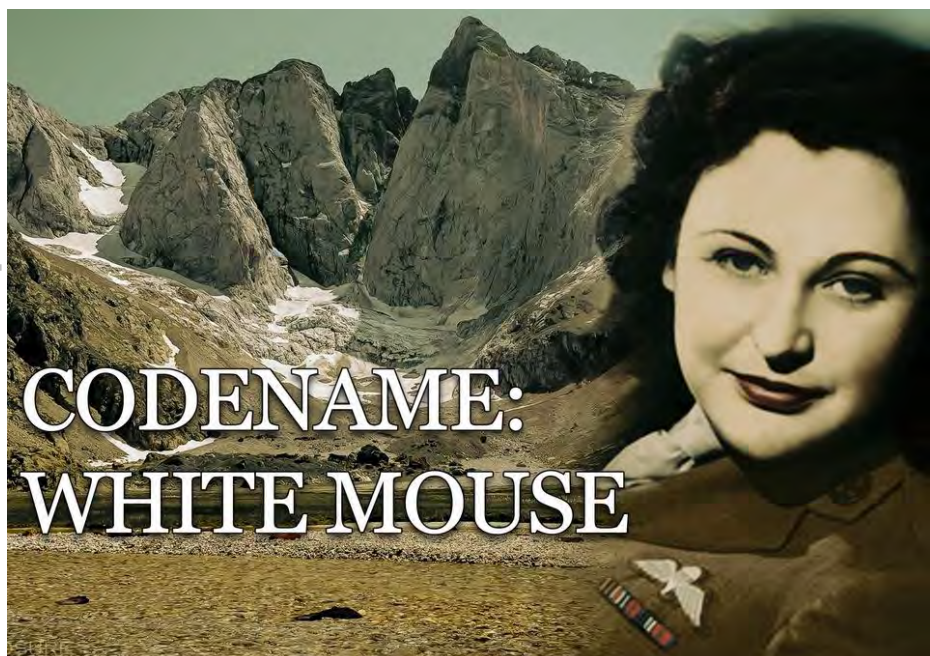
On Saturday 24th February the Nambour Museum will be launching the updated and much expanded second edition of the Museum's book "Locomotives of the Moreton Central Sugar Mill".

This edition has been published to mark the 20th anniversary of the closure of the Moreton Sugar Mill as the first edition did for the 10th anniversary.



Buderim Forest Park - Buderim

A delightful walk through cool dense rainforest in the lower section of this 45 hectare reserve on the northern side of Buderim. The path follows the creek from top to bottom - making it a cooler walk during Summer.



**Lind Lane Theatre, Codename: White Mouse
February 16-24**

Codename: White Mouse describes WWII from the perspective of a fearless woman who sacrificed her own happiness and wealth in the fight against the Nazis.

The play tells the story of how, after engineering the escape of hundreds of allied servicemen from occupied France, New Zealand-born and Australian raised Nancy Wake became the Gestapo's most wanted woman.

Written by Rachel Bublitz and directed by Glenda Campi

For more details: <https://www.lindlane.com.au/whats-on>



**Free Mobile Service
will be at**

**Kenilworth Showgrounds
27—29 February 2024**



Female and over 40?

Call 13 20 50 or visit
breastscreen.qld.gov.au

Recent Development Applications in Divisions 5 and 10

Repeats

This is an initiative of Pop Up Community News aimed at providing information and heightened awareness as to developments in our region. Hopefully the information will provide a spring board should anyone wish to dive deeper into any specific application. Using the link: <https://developmenti.sunshinecoast.qld.gov.au/> or entering "development i sunshine coast" into a browser will take you to the Development i home page. Click on "Application Search" and enter the application number. Select "Details" if you want to dive deeper. The supporting documents can typically be downloaded or viewed by selecting "Application Documents" in the right hand section of the screen.

In the listings below, typically a brief editorial comment is provided after each application description. These are shown in *italics*.

Lodged: 29/01/2024 DA#: POS24/0007

Stages 1 to 4 - 41 Glenbrook Drive Nambour - Survey Plan SP336371 (59 lots - being 53 created and 6 Drainage Lots) - Millwood Rise Developments Pty Ltd - DTS Qld. *Survey Plan Confirmation relating to DA# RAL190005 from early 2019.*

Lodged: 31/01/2024 DA#: MCU23/0242.01 and CAR23/0609

644 Maleny-Montville Rd BALMORAL RIDGE - Dwelling siting and second dwelling carport - Material Change of Use (Secondary Dwelling) Michelle & Nick Flanigan - Ferris Town Planning (COMBINED CAR23/0609). *Alterations to existing approved DA#: MCU239242.*

Lodged: 01/02/2024 DA#: MCU24/0022

8 Moorhouse Rd WOOMBYE - Dwelling House - Metricon Homes Pty Ltd - Suncoast Building Approvals Pty Ltd. *Kalaney 26 from Metricon in Aspire facade, 3 Bed + Study, 2 Bath, Family, Sitting, Outdoor plus 2 garages.*

Lodged: 01/02/2024 DA#: RAL21/0023.02

DH 6 Dunlop Way MALENY - No split level front setbacks and earthworks - Reconfigure a Lot (5 Lots into 67 Lots [63 Residential Lots, 3 Drainage Reserves, and Bushland Reserve] and New Road in 5 Stages) - GJ Gardner Homes Sunshine Coast South - JDBA Certifiers. *New dwelling on subdivision DA#: RAL21/0023. 4 Bed, 2.5 bath, living, dining & 2 garages.*

Lodged: 05/02/2024 DA#: MCU24/0026

5-7 Blackall St WOOMBYE - Extension to a Hotel - Woombye Pub Holdings Pty Ltd - Brennan Planning Pty Ltd. *Outdoor Dining and Bar Refurbishments.*

Lodged: 06/02/2024 DA#: OPW20/0701.02

48 Dorans Rd NORTH ARM - Roadworks Drainage Stormwater Earthworks and Vegetation Clearing - Pace Planning PTY LTD. *As part of RAL20/0154, subdivision 1 lot into 6 lots.*

Lodged: 06/02/2024 DA#: REC15/0232.01

40 Noel St NAMBOUR - Generally in accordance - Reconfiguring of Lot 3 RP905437 into 3 Lots - Project Urban. *Continuing DA#: REC150232 1 into 3 lots - No specific plans published.*

**MONTVILLE GROWERS AND
MAKERS MARKET**

March 9th, 7:00am to midday



Repeats



Montville Chamber of Commerce Inc.



International Women's Day

"Inspire Inclusion"



Secrets on the Lake

08 March 2024, 7.30am at Secrets on the Lake

INTERNATIONAL WOMEN'S DAY "WOMEN IN BUSINESS" BREAKFAST

with
Emma Thomas
Sunshine Coast
Council CEO



- Fashion Parade by Fashion by Nature
- Raffles
- Auction
- All funds raised donated to Blackall Range Zonta & Maleny Neighbourhood Centre

Tickets are \$35 which includes a delicious breakfast of your choice & lucky door ticket. Purchase through Eventbrite. Click on booking link below.

<https://www.trybooking.com/events/landing/1171705>



CALOUNDRA
Regional Gallery



THE SHAPE OF MEMORIES

Teresa Baselga

February 3 - 24

Opening event
Saturday 3 February 5.00pm

Old Ambulance Station 80 Howard Street Nambour



The Old Oak

24 FEBRUARY: 3 pm & 7 pm
114 Mins | UK | Drama |

VENUE: MALENY COMMUNITY CENTRE
23 MAPLE STREET MALENY

The Old Oak takes place in a now poverty stricken, formerly affluent and vibrant, coal mining village in Northeast England, where Syrian refugees from persecution by the Assad regime have been relocated by the British Government.

The film focuses on the ultimately successful efforts of T J Ballantyne, landlord of the last remaining village pub, The Old Oak, to bring the splintered community together. Starring Dave Turner (*I, Daniel Blake*), written by BAFTA winning Paul Laverty and brilliantly directed by the veteran British film-maker, Ken Loach, responsible for over 50 much loved, critically lauded and influential films from *Kes* to *I, Daniel Blake*, this heart-warming, inspiring, spiritually-refreshing, story of the triumph of people power, hope and determination over adversity is destined to take its place as a classic of World Cinema.



MATINEE SCREENING

Doors Open at 2:30pm for licensed bar, tea/coffee, slices

Movie Starts at 3:00pm

EVENING SCREENING

Doors Open at 6pm.

Movie starts at 7:00pm licensed bar, tea/coffee, slices

BYO nibbles, meals or restaurant takeaway (Tables provided)

For more information: <https://malenyfilmsociety.au/>

Gambling Community Benefit Fund

Round 120 of the Gambling Community Benefit Fund is now open!

Not for profits and community groups can apply for grants from \$500, up to \$35,000.

Applications are open until 29 February 2024.

For information: <https://www.justice.qld.gov.au/initiatives/community-grants>



Vianta Arts Presents

Laurie Catlin

Exhibition

January 7 / March 3 2024

VIANTA ARTS 70 SIMPSON ST BEERWAH 0431 730 276

LIST OF COMMUNITY ORGANISATIONS

A COMBINED LISTING FOR FLAXTON, KUREELPA, MAPLETON AND MONTVILLE

Blackall Range Care Group Ltd www.rangecare.com.au

Blackall Range Lions Club E: blackallrangelionsclub@outlook.com; [facebook.com/blackallrangelionsclub/](https://www.facebook.com/blackallrangelionsclub/) ; <http://www.brhc.org.au>

Blackall Range Visual Artists www.blackallrangevisualartists.com.au

Blackall Range Woodcrafter's Guild Inc. Meets Montville Sports Ground 230 Balmoral Rd Montville. Open 8.00am to 11.30am Mondays to Saturdays.

Blackall Range Zonta Club Email: info@zontablackallrange.org.au
www.zontablackallrange.org.au

Bush and Beach walking group. Meets Mapleton Public House car park on Tuesdays at 7am (winter start time) and car pools.

Hinterland Quarry Action Group

Anne Veivers 0416 155 116; aveivers@iprimus.com.au

History Group montvillehistorygroup@gmail.com

Kureelpa & Dulong Community Hall kureelpahall@gmail.com

Mah-jong Telephone 5478 6303 Mapleton Bowls Club.

Mapleton and District Community Association

(MADCA) madca.inc@gmail.com <https://www.facebook.com/madca4560>

Mapleton Art Thursdays weekly at Mapleton Library and Community Centre. Contact: mapletonlibrary@gmail.com

Mapleton Bowls Club Telephone 5445 7479
www.mapletonbowlsclub.com.au

Mapleton Bridge Club Mapleton.bridgeaustralia.org
mapletoncontractbridgeclub@gmail.com

Mapleton Choir Kureelpa Hall 7pm, Mondays Contact:
themapletonchoir@outlook.com

Mapleton Country Market every 4th Saturday at the Mapleton State School car park. Contact Paula 0419 726603 email: countrymarket.mapleton@gmail.com or find us on Facebook.

Mapleton Library and Community Centre

mapletonlibrary@gmail.com www.mapletoncommunitylibrary.com
Telephone 5445 7011

Mapleton Craft Group Wednesdays 9-12noon, Mapleton Bowls Club

Mapleton Hall and Sportsgrounds mapletonhall@gmail.com

Mapleton Men's Shed www.mapletonmenshed.org.au

Mapleton Movers Heart Foundation Walking Group meet in the afternoons every Monday, Wednesday and Friday at the Lilypond's carpark for enquiries call 0408 756353

Mapleton Quilters Mondays 9-12 noon, Mapleton Bowls Club

Mapleton RSL Sub Branch Matt Dykes
0427263595; mdykes7@gmail.com

Mapleton Rural Fire Brigade Telephone 0499 778806; 0499 883019

Mapleton Tennis Club mapletontennis@gmail.com
www.tennis.com.au/mapleton-tennis-club

Montville Anglican Church huesong2@gmail.com

Montville Chamber of Commerce

montvillechamber@gmail.com

Montville Masonic Lodge montville260@outlook.com

Montville Rural Fire Bridage montville.rfb@bigpond.com

Montville School P&C msspandcpresident@gmail.com

Montville Uniting Church minister@ourcommonlife.org.au

Montville Village Association secretary.mva@gmail.com
www.montvillevillageassociation.org.au

MVA MARKET montvillemarket.mva@gmail.com

RangeCare OP SHOP 17 Obi Obi Road

Probus Club of North Blackall Range Secretary 0493 632703
nbrprobus@gmail.com

Range Community Gym and Fitness Centre
mapletongym@gmail.com www.rangecommunitygym.com.au

RANGE United Soccer Club info.rangeunited@gmail.com

Sunshine Coast U3A u3aoffice@u3asunshine.org.au

Tennis Club montvilletennisclub1925@gmail.com

The Flaxton Craft Group lkathypatterson@gmail.com

The Range Community Kindergarten

www.rangekindy.qld.edu.au

Wildlife Volunteers Association Inc (WILVOS)

Hotline 5441 6200 www.wilvos.org.au

Mapleton Community Facebook page

www.facebook.com/groups/mapletonqueensland/

Montville Community Facebook page

www.facebook.com/groups/780987252874906/

Flaxton Community Facebook page

www.facebook.com/groups/388815358233538

Happenings – Montville and surrounds email newsletter

Subscribe: www.montvillevillageassociation.org.au/subscribe-to-happenings/ Editor.mvahappenings@gmail.com

SCHOOLS

Blackall Range Independent School

office1@brschool.com.au

Mapleton State School principal@mapletonss.eq.edu.au

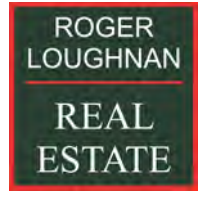
Montville State School admin@montvilless.eq.edu.au

**If your organisation is not listed,
please let me know. Many thanks, nita**

mapletonqueensland@gmail.com



Supporting local businesses that support the community



Mapleton



[Over time, more businesses will be included.]



Community brochure and poster display on the verandah of the **Mapleton Library and Community Centre.**

If your organisation has brochures or short term posters, consider adding them to this community service.

If you are looking for information, check out this collection.

Currently over flowing with posters and brochures—there is something for everyone.

The 2024 Zonta Business Directory is to hand.



RECYCLING IN MAPLETON

SPECTACLES are collected by Lions at the Mapleton Library and Community Centre and the Mapleton Bowls Club.

CANS and BOTTLES - Containers for Change

Mapleton Bowls Club - There is a convenient collection point which is a wheelie bin placed near the entrance. Bins can be distinguished from others by its bright blue lid.

Mapleton State School P & C. All your donations would be gratefully received and will go towards resources for our school and students.

Mapleton Men's Shed These may be left in the bins in front of the storage shed in Mapleton Forest Drive.

RangeCare All fund raised will improve services for their clients. 360-362 Flaxton Drive Flaxton; 36 Doolan Street, Nambour; 17B Bean Street, Maleny.

Please do not crush the cans you deposit for recycling.

MOBILE TELEPHONES

Roger Loughnan Real Estate, corner Post Office Road and Obi Obi Road Mapleton, is a registered drop off location for people to donate their old working phones with chargers etc. The staff will deliver these to DVSafe Phone. **Also place in any Lion's spectacle box.**

Plastic lids from drink bottles only—collection container on the Mapleton Library Centre verandah



Blister packs—plastic container on the Mapleton Library Centre verandah



Used pens—plastic container on the Mapleton Library Centre verandah

Tooth brushes—plastic container on the Mapleton Library Community Centre verandah

YARN LIBRARY- Sewing, knitting and embroidery items to swap—container inside the Library Centre



PLANT LIBRARY – there is a stand outside where you can leave you plants some one else might like.

THANK YOU to all who have already recycled many of the above items.



Procedures for Pop Up Community News management

The Pop Up Community News was launched in 2016. The News has gone through many changes with no one organisation controlling the News—it is truly a community news: for the community by the community. Auspiced by the Mapleton Library and Community Centre since 2016 which provides insurance, financial support and much more.

The News offers opportunity to promote events and provide information to all community groups right across the Range and the surrounding hinterland

Thank you everyone.

The Pop Up Community News is edited, published and distributed by volunteers.

There will be no discussion or correspondence on matters pertaining to the Pop Up Community News.

- All articles for the Pop Up Community News are to be sent to mapletonqueensland@gmail.com
- If it is important to have an article included in a specific edition, forward article as early as possible. Generally the cut off time for publication is 12noon Tuesday each week but as this is a fully volunteer publication inclusion is not guaranteed.
- Articles can be emailed at any time. Please include contact name and contact details.
- All articles are to be sent digitally unless otherwise pre-arranged.
- Pop up Community News is published weekly but open to review at any time. A short holiday over Festive Season each year to give the volunteers a well earned holiday.
- Currently Thursday night for distribution is the target time.
- No lost animals, political, religious, personal opinions or missing person notification will be published.
- Negative or derogatory comments will not be published.

Email mapletonqueensland@gmail.com requesting guidelines.

Anyone wishing to receive the Pop Up Community News, send your email address to mapletonqueensland@gmail.com

Anyone wishing to cease receiving the Pop Up Community News, send your email to mapletonqueensland@gmail.com

Keep informed through the web and social media

www.facebook.com/groups/mapletonqueensland/

www.mapletoncommunitylibrary.com

Remember if you wish to receive the

POP UP COMMUNITY NEWS

Email mapletonqueensland@gmail.com

Current circulation over 4,254

