



# POP UP COMMUNITY NEWS

Mapleton and Hinterland Communities'

Weekly News

9 May 2024

Issue 391

## WHAT IS ON THIS WEEKEND?

- \*\* Saturday 11th 'Riceboy Sleeps', Maleny Film Society
- \*\* Saturday 11th Cooroy Butter Factory Arts Centre—Mother's Day Market, 10am-2pm
- \*\* Saturday 11th Montville Markets
- \*\* Sunday 12th Mother's Day

Details within this edition



## SUNSHINE COAST COUNCIL DISPLAY REGARDING THE PROPOSED DARK SKY RESERVE

**WHERE?** Mapleton Library and Community Centre

**WHEN?** 20<sup>th</sup> May to the 14<sup>th</sup> June

**Drop-in session** of 2 hours, Wednesday 29th 2-4pm. Council staff will be on hand to answer your queries.

**Here is a link with more information:** <https://www.sunshinecoast.qld.gov.au/environment/sustainability-and-climate-change/establishing-a-proposed-sunshine-coast-dark-sky-reserve>



## MAPLETON MOVERS

**WHEN:** Every Monday, Wednesday & Friday  
**WHERE:** Meet at the Mapleton Lilypond Carpark  
**GROUP ORGANISER:** Beth Wilkins 0408 756 353  
(Hotter months 5pm - 6pm, Cooler months 4pm - 5pm)  
Walk as much as you can manage)



Heart Foundation Walking recommend Walking for an average of 30 mins or more a day can lower the risk of Heart Disease, Stroke by 35% and Type 2 Diabetes

## 391st EDITION CONTENTS

Dark Sky Proposal  
Mapleton Movers  
Friday Night Dinner  
Mapleton Hall Calendar  
Community Strategy-  
Sunshine Coast Council  
QCCC  
Orchid Show  
Mapleton Crop Swap  
Taste of the Hinterland  
Open Studios  
Book Review

Development Applications  
Rangebow Festival  
Fauna and Flora  
Community Services  
Date Claims  
Repeat Articles  
Local Organisations Contact  
Details

and much more

## DINNER NIGHT MAPLETON BOWLS CLUB

FRIDAY 10 MAY  
Orders taken from 6pm

### Special Mains

Tuna pasta bake chips and salad  
Creamy honey chicken legs with chips and salad

### Dessert

Chocolate self-saucing pudding with ice cream  
Apple berry upside down cake with cream

**Everyone is welcome**

**Make this a relaxing night away from the  
kitchen**

A 10 multi-draw raffle—be a winner

---

## DATES AND HIRING TIMES AVAILABLE FROM MAPLETON HALL

Woodfordias touring 'Festival of Small Halls'  
SUNDAY 20<sup>th</sup> October 3.30pm.

'Blackall100' event October 19th

### Availability times to hire the hall:

- Monday available till 5.30 pm
- Tuesday. " 12-3 pm
- Wednesday " till 3pm
- Thursday available 10.30am-3 pm
- Friday. " after 10am (most Fridays)

Tuesday, Wednesday, Thursday nights available from 6.45pm

Mapleton Hall and Sportsground Trustees  
[mapletonhall@gmail.com](mailto:mapletonhall@gmail.com)

---



## Community Sessions: Draft Refreshed Community Strategy

In 2023, Sunshine Coast Council commenced a comprehensive review of the [Sunshine Coast Community Strategy 2019-2041](#) and supporting [Action Plan 2019-2024](#). As part of this review, the [Stronger Together](#) community engagement program was delivered to refresh the Community Strategy and reflect community feedback and changing priorities. You are receiving this invitation as someone who has been involved, or shown an interest in the Stronger Together community engagement program.

**A new draft Sunshine Coast Community Strategy has now been prepared.** You are invited to participate in an upcoming Community Session where you can provide feedback on the draft refreshed Community Strategy and explore what actions you will take to contribute to our shared goal of a strong Sunshine Coast community.

### What you can expect

- Learn about the development of the refreshed Community Strategy, including what our community told us during the Stronger Together engagement program
- Gain insights into the refreshed Community Strategy, including its priorities and outcome areas
- Engage in discussions with fellow community members about the priorities within the refreshed Community Strategy and their significance to our region
- Contribute your suggestions to improve the refreshed Community Strategy
- Make new connections and network with other community members
- Share your ideas and explore opportunities for future collaborative action
- Understand the next steps to finalise the refreshed Community Strategy.

### Register

Three Community Sessions are available to attend:

Date	Time	Location
<b>Thursday, 30 May</b>	9.30am to	Meridan Community Centre
<b>Saturday, 1 June 2024</b>	10.00am to 12.00pm	North Shore Community Centre
<b>Tuesday, 4 June 2024</b>	6.30pm to 8.30pm	Kureelpa and Dulong Community Hall

**Visit [Have your Say Sunshine Coast](#) for more information and to register. Places are limited. Register for a session today!**

<https://haveyoursay.sunshinecoast.qld.gov.au/draft-refreshed-community-strategy-community-sessions>

### Other opportunities to get involved

Can't make it to a Community Session? There will be other opportunities to provide feedback during the engagement period including completing the community survey or feedback template, or you can get creative by entering the 'Our Strong Community' photo competition.

Feedback on the draft Community Strategy can be made between **14 May and 10 June 2024** and the new strategy will be finalised before the end of 2024.

Have questions or want to learn more about the project, please contact Council's Community Planning and Engagement team on:  
Email: [engage@sunshinecoast.qld.gov.au](mailto:engage@sunshinecoast.qld.gov.au)

Telephone: 5475 7272



## **QCCC WEEKLY ACTIVITY**

We'll be revving up the dining room fireplace now that the weather is turning cooler. There's still a steady procession of camps though, keen to enjoy the change of seasons and cooler nights we enjoy in the mountains. The week kicks off with a large group Grade 7 arriving from the Fraser Coast.

There will be a big changeover day on Wednesday with three incoming schools. Two Grade 4 camps from the Sunshine Coast, staying close to home and another composite 5/6 camp arriving from the northern suburbs of Brisbane.

### **ACTIVITY OF THE WEEK: Navigation & Orienteering: Year 4 +**

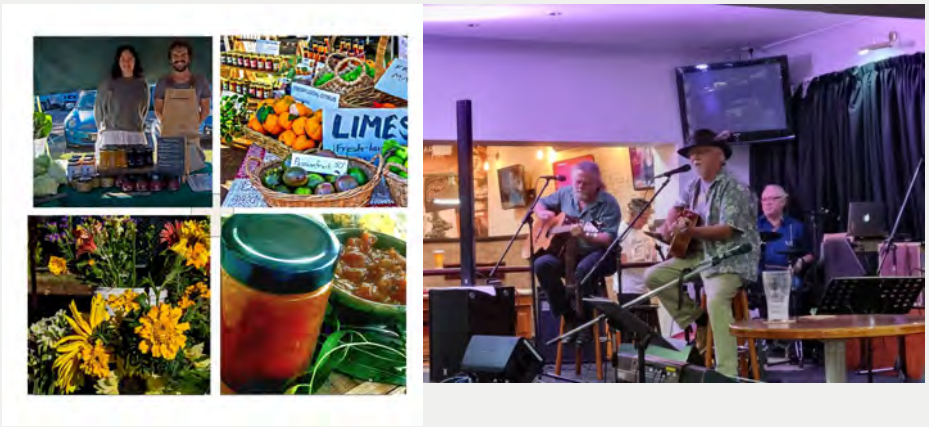
Exercise your mind and body with this exciting pursuit. Learn to navigate between control points marked on QCCC Mapleton's topographic orienteering map using compass, legend, and scale. Challenge your small group (two or three) to complete the course in the quickest time choosing your own best route.

Participants will have fun finding our range of easy to difficult control markers, with their punch card results providing proof. Focuses on teamwork, communication, spatial awareness, and problem solving.



Thank you George K. for sending this image from your back yard.

George has requested a name please.



**The next monthly Mapleton Country Market is on Saturday 25th May** from 8am to MIDDAY. We welcome back again to the Market the Landscape Band. Members, John, Mike and Derek have a philosophy to care for the landscape (environment), care for the local community, and care for our country. They hope the music reflects this with their style from folk, country and light rock. With lots of original songs and carefully selected covers from many years of making music. They also conduct bush dances with John as a caller in the 70's and 80's bush wackers style. Ask the guys for their contact and support them on the day. The Mapleton Country Market is proudly supported by MADCA with all funds from the market going towards a local Grants Scheme. See you on the 25th May at the Mapleton School Carpark.

Images: Above Left: 4 to a page Falls Farm limes  
Above right: Landscape Band members

## CROP SWAP MAPLETON

**Wednesday 15 May 9am**

Bring produce to swap. Currently a great season for pumpkins.

Gardens surrounding RangeCare OpShop



## ORCHID SHOW BLI BLI

**Saturday 11th May, 8:00am - 3:30pm**

Bli Bli Uniting Church, Lefoes Road, Bli Bli

Maroochydore Orchid Society is hosting a one day orchid show on the 11th of May 2024 at the Uniting Church Bli Bli. There will be flowering orchids on display as well as orchids for sale. The cafe will have delicious home made sandwiches and sweet treats. Entry is \$5 and eftpos is available. We have our show every year the day before Mother's Day.

Telephone for more information: 0431 535181





The Barn on Flaxton was abuzz on Friday evening when Lions held their third *A Taste of the Hinterland* event. There was a seemingly never-ending flow of delicious finger food generously provided by The Barn, a range of locally produced foods and drinks to try and good prizes to be won. "Over 80 locals contributed to the party atmosphere and so far, all feedback has been very positive," organiser Marcia Jensen said.



Prizes included dinner for 2 at Tapas 10, a voucher from Waffle On, and hampers from The Barn, Monty's of Montville, Andrew Powell, and Thierry le Clerc. The Restoring Hope Parkinson's Therapy group raffled a small bear made from alpaca wool which was won by a delighted Ann Wells and can be seen at the Montville IGA.



Lions depend on nights like this and their other fund-raising activities to be able to serve needs as they arise in our community. They are already thinking about ways to add to the experience for next year.

*Lions thank The Barn and our community for being so supportive of our events.*

18-26 MAY 2024

# OPEN STUDIOS

SUNSHINE COAST

## HIT THE ROAD ON AN ARTISTIC ADVENTURE

Contributed by Lea Parkes (Open Studios Co-ordinator)

Have you curated your Open Studios 2024 itinerary yet? The good news is that there is still time to work out which of the 55 artists in 51 studios, five pop-up exhibitions, four galleries, 20+ workshops and two artist talks across our six trails that you can fit into your schedule.

This year the Coastal studios will take centre stage over the weekend of 18 – 19 May and the Hinterland studios will all be throwing open their doors on the weekend of May 25 – 26.

And of course there are quite a few of the artists who have chosen to open a few days during the week (see their profiles in the Art Trail Guides for more details); or who have decided to offer workshops; as well as our very own Meander exhibition featuring the works of around 40 artists, taking place at the Old Ambo Station at Nambour from May 9 – May 28 ... so there is plenty to choose from.

Start off by working your way through our on-line art trail guide on the website.....

<https://openstudiossunshinecoast.com.au/>

## Re: 1979 Memorial tree planting

- standing Cr. Moss Day, Terry Wareham, Bob Williams. Note in rear sawmill site (no houses), swamp, looking towards top of Post Office road. Note very few houses.

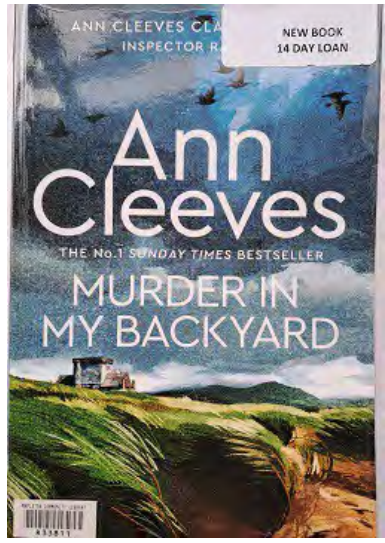


Thank you  
Lindsey  
Wareham

## BOOK REVIEW

'Murder in my backyard' by Ann Cleeves, a well known English author of murder mysteries. She has written over 35 novels winning various awards and has several televised by ITV and the BBC.

This title is the second in the series featuring Inspector Ramsay. Set in the northern area of England the story involves the murder of an elderly local woman in her village whose name is Alice Parry. Ramsay himself is a newcomer to this area and is still finding his way, developing new friendships. Who murdered Alice? Her family, or perhaps other locals, many of whom have a grudge against her within their complicated lives, or, those involved...



Ann Cleeves weaves her stories with great skill keeping the reader guessing the identity of the murderer until the last few pages. Most enjoyable for those who may not have read her books before.

Available for loan at the Mapleton Library and Community Centre.

Thank you to another new contributor.

# Mother's Day Market

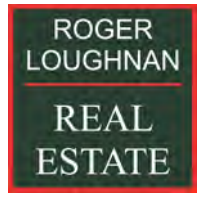
**Cooroy Butter Factory Arts Centre**

\$30 per stall  
20 stalls available  
Registration closes Saturday May 6, 3pm

**May 11 | 10AM - 2 PM**  
**11 Maple Street, Cooroy**

Bring your own:  
Table  
Chair  
Payment system

## Supporting local businesses that support the community



[Over time, more businesses will be included.]

## RECENT DEVELOPMENT APPLICATIONS IN DIVISIONS 5 AND 10

This is an initiative of Pop Up Community News aimed at providing information and heightened awareness as to developments in our region. Hopefully the information will provide a spring board should anyone wish to dive deeper into any specific application. Using the link: <https://developmenti.sunshinecoast.qld.gov.au/> or entering "development i sunshine coast" into a browser will take you to the Development i home page. Click on "Application Search" and enter the application number. Select "Details" if you want to dive deeper. The supporting documents can typically be downloaded or viewed by selecting "Application Documents" in the right hand section of the screen.

In the listings below, typically a brief editorial comment is provided after each application description. These are shown in *italics*.

**Lodged: 29/04/2024 DA#: MCU24/0105 & OPW24/0161**

43 Dunne Rd GLENVIEW - Dwelling - Twist Landscape Construction - C/O- Bax Engineering. *Dwelling on large allotment. Documents relate to operational earthworks – no house plans as yet, outline only.*

**Lodged: 29/04/2024 DA#: OPW24/0162**

96 Eudlo Rd MOOLOOLAH VALLEY - Stormwater, Earthworks and Vehicle Crossover - Dean Stephenson - Simply Town Planning. *In association with RAL23/0007, approved May 2024, 1 lot into 2.*

**Lodged: 29/04/2024 DA#: OPW24/0165**

Stages 3 & 4 - Elizabeth St NAMBOUR - Electrical Reticulation and Street Lighting - Millwell Services Pty Ltd. *Long term development continuing.*

**Lodged: 29/04/2024 DA#: OPW22/0463.01**

116 Thrushs Rd DULONG - Construction Inspection for Civil Works - River Investments Qld Pty Ltd - TOD Consulting - Greentape Solutions - Millwell Services. *Related to MCU00/0085, long term development in Platypus Creek region continuing.*

**Lodged: 02/05/2024 DA#: RAL22/0003.01**

Dulong Rd Burnside Rd PERWILLOWEN - Minor Change to Approval - Reconfiguration of a Lot 3 into 3 Lots - Rowan Gaylard - Adapt Town Planning & Development Management.

**Lodged: 02/05/2024 DA#: OPW24/0173**

469 Dulong Rd DULONG - Clearing vegetation - Noosa Tree Man. *Mainly gums that have grown large and are dropping limbs.*

**Lodged: 02/05/2024 DA#: RAL21/0148.01**

139 Windsor Rd BURNSIDE - Minor Change to Approval - Reconfiguration of a Lot - 1 Lot into 15 Lots - Devcon Capital 11 Pty Ltd - Innovative Planning Solutions. *Changes to the treatment of the development along the Windsor Road boundary.*

**Lodged: 03/05/2024 DA#: RAL23/0033.01**

47 Image Flat Rd NAMBOUR - Realign boundary - 1 into 2 lots subdivision - Australian National Homes Pty Ltd - Lee Development Planning Pty Ltd. *Change to existing approval where the boundary realignment created northern and southern lots, to a boundary realignment running at 90 degrees to approved, thus creating western and eastern lots.*

---

## WOODFORD FOLK FESTIVAL

**27th December 2024 - 1st January 2025.** Woodford Folk Festival is looking ahead to a strong 2024 after a challenging previous year. While attendance fell short in 2023 due to factors like bad weather and economic pressures, the festival is known for its exceptional artists and community spirit. They're calling on loyal patrons to secure tickets early this year to ensure the festival's continued success. (Available May 22nd) With an ambitious program planned, Woodford promises to be a highlight of Australia's festival scene in 2024.

---



## **YES, THE RANGEBOW FESTIVAL FOR 2024 IS ON!**

Say YES to celebrating festivals and the vibrant creativity and spirit within The Range communities, with a focus on diversity, inclusion, sustainability, and reconciliation with 15% OFF all event tickets until May 31.

The Rangebow Festival 2024, 1st-4th August, offers a diverse blend of music, nature, taste, arts, theatre, film & culture.

Your favourites are returning including: Forage Fire Feast, a First Nations gourmet food and culture experience, plus After-Dinner Mintz - Burlesque night with Scarlet Tinkerbell and The Kitty-Kats.

Experience the Symphony Opera Premiere with the Sunshine Coast Symphony Orchestra, or the intimacy of Chapel of Love - harp, cello, flute and viola concert.

For the nature enthusiasts you'll see the return of Walk on the Wild Side - Platypus Whispers, along with the Plant & Party event, where live music accompanies tree planting at Russell Family Park in Montville.

Montville Gourmet Bistro wants everyone to have a fabulous festival experience so don't miss three days of free entertainment suitable for everyone in The Enchanted Garden.

<https://www.therangebowfestival.org/>

---



### **PUBLIC TALK: WHAT IS FOREST BATHING?**

18 May: Jay Ridgewell discusses methods to strengthen our connection with nature

Do you have a daily routine of getting outside and recharging your 'batteries'?

The therapeutic benefits of time spent in nature are often talked about. For some however, it can be tricky to know where to start - or how to embed techniques that enhance wellbeing and connection to the more-than-human world. Forest Bathing is one nature therapy approach, informed by the Japanese practice of shinrin-yoku, which has positive physiological and psychological effects.

Guest speaker Jay Ridgewell will discuss Forest Bathing techniques, as facilitated through her Held Outside consultancy, and learnt through her training as a certified Nature and Forest Therapy Guide. Jay's background as a science communicator and interest in deep ecology also informs her commitment to sharing practices which connect people to nature.

This presentation will include a taster experience of Forest Bathing and will be followed by the Friends of Mary Cairncross general meeting. All welcome to attend.

Morning tea provided from 9.30am. Jay's talk will commence at 10am.  
Register for FREE—contacts below.

Questions or enquires? Please contact the Friends of Mary Cairncross Association.  
Email: [fmcasec@gmail.com](mailto:fmcasec@gmail.com) Mobile: 0411 323 994

---

## GUITARRA Y CUARTETO (MALENY)

Sunday 19th May, 4:00pm - 6:00pm

23 Maple St, Maleny

Guitarra y Cuarteto with The Black Square Quartet

Experience the rhythmical fusion of classical and flamenco music through Andrew Veivers' captivating compositions for guitar and string quartet in Guitarra y Cuarteto. This groundbreaking concert program performed with the hauntingly beautiful Black Square Quartet showcases a harmonious blend of Andrew's original compositions and iconic Spanish works. Inspired by musicians such as Manolo Sanlucar, Steve Reich, and Manuel de Falla, Andrew's compositions for Guitarra y Cuarteto exhibit a unique and individual charm.

Formed in 2018, The Black Square Quartet is dedicated to championing new and Australian music, offering a fresh perspective on classical compositions that is both inspiring and unforgettable. Don't miss this new collaboration from some of Queensland's finest string and guitar musicians.

Cash bar available. Licenced venue - no BYO alcohol please.

BYO supper.

3.30pm doors for a 4pm start. Please allow time to check in and find your seats.

Red Chair Pty Ltd is focused on responsible and safe management of our Staff, Contractors, Artists and Patrons.

This project is supported by the Queensland Government through Arts Queensland. This initiative was supported through the Creative Industries Investment Program and is jointly funded by ArtsCoast through Sunshine Coast Council's Art and Heritage Levy and the Regional Arts Development Fund in partnership with Queensland Government.

Cost: \$25 - \$30 AUD + BF

<https://events.sunshinecoast.qld.gov.au/event/22489977-a/guitarra-y-cuarteto-maleny>

## AMOR

Featuring a talented cast from diverse cultural backgrounds, including Bella Wanwei Liu, Mary Eggleston, Megan O'Hare, and Valentina Ayala, Amor promises to deliver a visceral and emotional experience unlike any other. Director Cesar Genaro, along with Creative Producer Priscila da Cunha and D.I.V.E.'s ensemble of devising performing artists, has collaboratively and meticulously crafted a visual and auditory landscape that will leave audiences spellbound.

Shattering traditional theatre settings, Amor will be performed in the intimate confines of the Black Box Theatre at The Old Ambulance Station in Nambour. With no stages or seats, spectators will stand alongside the performers, fully immersed in the unfolding narrative.

Email: [info@divetheatre.com](mailto:info@divetheatre.com)  
Website: [www.divetheatre.com](http://www.divetheatre.com)





## Probud Club of North Blackall Range Inc

Probud Club of North Blackall Range Inc meets on the **second Friday of the month at the Mapleton Bowls Club, 5 Post Office Road, Mapleton between the hours of 10am and 12noon.** Probud is an organisation for Retired People, and has a mantra of Friendship, Fellowship and Fun.

Our club has interesting Guest Speakers, outings to places of interest and special interest groups such as a Games Group, Book Club, Theatre Group and a Foodies Group.

Prospective members are invited to attend a meeting free of charge to meet our members, and test the waters. For more information contact the Secretary, Kaye, by email [nbrprobud@gmail.com](mailto:nbrprobud@gmail.com) or by mobile phone 0493 632 703.

**LOCAL**

### **EASTERN CATTLE EGRET**

#### ***Bubulcus coromandus***

Originally found in Africa, Europe and Asia, the Cattle Egret is now found on nearly every continent with birds in Australia native to south and east Asia. In Australia colonisation began in the 1940s, establishing in the north and east of the continent and now widespread to the SW, the SE and Tasmania. They began to regularly visit New Zealand in the 1960s. They are a small, 46-54 cm long, squat egret, commonly seen in our area usually feeding around and even perching on cattle and other large grazing animals, catching creatures disturbed by them. It has been found that they reduced the number of flies that bothered cattle by picking them directly off the skin.

Cattle Egrets feed on a wide range of prey, particularly insects, especially grasshoppers, crickets, flies (adults and maggots) and moths, as well as spiders, frogs, and earthworms.

The sexes are similar. Non-breeding adult birds have mainly white plumage, a yellow bill and greyish-yellow legs. Breeding birds have a bright orange head and breast as well as a brighter bill. They usually nest in colonies with water-birds such as ibises, herons and other egrets in the foliage of trees and shrubs near bodies of water.



Images:

Opposite: Adult Cattle Egret in breeding plumage...

Below: Non-breeding Cattle Egrets

Thank you Eric Anderson



**WEED**



### ***Tithonia diversifolia***

**Japanese sunflower** is regarded as an environmental weed in Queensland and New South Wales. It was also recently listed as a priority environmental weed in at least one Natural Resource Management region.

#### **COUNCIL DECLARATION**

Class R – Reduce populations

A robust and bushy plant that can be short lived or long lived, growing up to 3 m tall. Its leaves have three or five pointed lobes and scalloped margins. Its large yellow daisy flowerheads are about 10 cm across.

Native to eastern Mexico and Central America (i.e. Belize, Costa Rica, El Salvador, Guatemala, Honduras, Nicaragua and Panama). Despite its common name, this species is not native to Japan.

**Spreading across the Range**—largest population is on the Dulong Range beside the Mapleton-Nambour Road.

This weed creates a monoculture taking over the habitats of the Australian native species.



**LOCAL**

### ***Backhousia myrtifolia***

**Lemon Myrtle** is a beautiful small tree that grows to 3-8m tall by 2-5m wide but may be kept smaller in large pots when pruned regularly. This hardy plant should be positioned in full sun to part shade in moist, organic-rich, well drained soils and it works well in low maintenance gardens, courtyards, large pots, and even in a sunny indoor spot.

It has attractive glossy green lemon-scented foliage with clusters of small fluffy white flowers from summer to autumn which attract birds, bees, and butterflies. Lemon Myrtle is endemic to subtropical rainforests of central and south-eastern Queensland.

There are number of fine examples in gardens along the Range and surrounding areas.



# Community Service

## WELCOME PACK FOR NEW RESIDENTS

### Are you a new resident?

Collect your pack from the  
Mapleton Library and Community Centre

Hours: 2pm to 5pm week days (summer)  
9am to 12noon Saturdays

### What does the pack include?

- Brochures promoting community organisations
- Pop up Community News - a free weekly news for everyone with information about the events in your neighbourhood
- List of community organisations in both Mapleton Flaxton and Montville
- Zonta Business Directory
- Recent publications such as the History of the Mapleton Bowls Club

**Also available at the COMMUNITY STALL at the Mapleton Country Market.**

## MAPLETON RURAL FIRE BRIGADE

### Mapleton Rural Fire Brigade

**Monthly Training:** 5:30pm on the 2nd Tuesday of Month

**Monthly Meeting:** 5:30pm on the 3rd Tuesday of Month

**First Officer (all operational matters):** 0499 778806

**Fire Warden (fire permits, safety checks):** 0499 778806

**Secretary (new members, administration):** 0499 883019

**Website:** <https://www.facebook.com/mapletonruralfirebrigade/>

**E-Mail:** [MapletonRFB@gmail.com](mailto:MapletonRFB@gmail.com)

**Address:** 37 Obi Obi Road, Mapleton 4560

**Postal:** PO Box 366, Mapleton 4560

## ST. MARY'S ANGLICAN CHURCH

On the green, Montville

Sunday Eucharist at 8am

Wednesday Meditation with Maureen 9am

For general enquiries contact Carole Phillips at 5445 7839

Baptisms and weddings enquiries welcome.

Contact Rev'd Deb Bird 0457 519899

[MalenyAnglicanParish.com.au](http://MalenyAnglicanParish.com.au)

or [deborah.bird@anglicanchurchsq.org.au](mailto:deborah.bird@anglicanchurchsq.org.au)

### Montville Uniting Church

Services are held each Sunday at 8.15 am, except on the 5th Sunday of a month when a combined service is held at Maleny Uniting Church at 9.45pm. All welcome.

Contact: Anita Monro (Rev. Dr)

Minister on Supply, Blackall Range Uniting Church

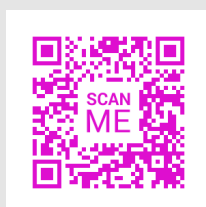
E: [minister@ourcommonlife.org.au](mailto:minister@ourcommonlife.org.au)

M: 0409 273 059

The church is open as a Reflection Gallery every day from at least 10am till 3pm.

# Date Claims

- 10 May** Probus Club of the North Blackall Range meeting 10am, Mapleton Bowls Club.
- 10 May** Friday Night Dinner, Mapleton Bowls Club.
- 11 May** Maleny Film Society, 'Riceboy Sleep', 3pm and 7pm.
- 11 May** Montville Markets, 7:0am-Noon.
- 11 May** Cooroy Mother's Day Market, Butter Factory Arts Centre.
- 12 May** Mother's Day.
- 15 May** 'Happy Mother's Day' morning tea, Range Gym and fitness Centre, 10am.
- 15 May** Mapleton Crop Swap, 9am, RangeCare Opshop gardens.
- 17-19 May** Kenilworth ArtsFest.
- 18-26 May** Open Studios.
- 20 May-14 June** Sunshine Coast Council Dark Sky Presentation, Mapleton Library and community Centre.
- 20 May** World Bee Day.
- 20-26 May** National Volunteers' Week.
- 22 May** Mapleton Falls Friends Workshop bee.
- 22 May** Messy Play Matters, Nambour Showgrounds.
- 24 May** Nature Walk starting at Kondalilla National Park, 11am.
- 25 May** Mapleton Country Market, 8am-Noon, Mapleton State School car park.
- 29 May** Drop in Session Council Dark Sky Project, Mapleton Library and Community Centre.
- 31 May** Bingo 9:30-11:30am Mapleton Library and Community Centre.
- 31 May-1 June** Maleny Show.
- 1-2 June** Mapleton Choir Concerts.
- 8 June** 'The Mikado', Maleny Singers. There are other dates, please see poster in this edition.
- 9 June** 2pm St George's Church 2 Walkers Drive Maleny 'Gosti' Macedonian folk concert.
- 22 June** Drag Queen Bingo Montville Village Hall 7pm.
- 5-7 July** Queensland Garden Expo.
- 1-4 August** Rangebow Festive, Montville.
- 5 October** Maleny Garden Club Spring Fair.
- 19 October, Sunday** Book Fair and Mini Market, 8am to Noon, Mapleton Library and Community Centre.
- 24 October** Lions Welcome to the Hinterland Dinner, Flaxton Gardens.
- 27 December-1 January** Woodford Folk Festival.

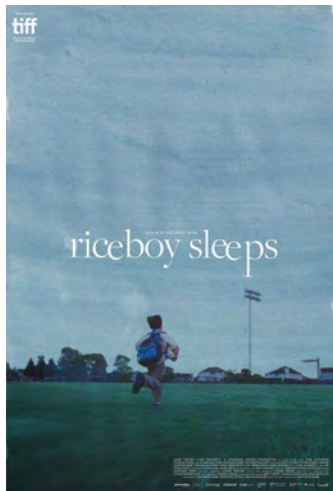


## 11th May - Montville Market

Indulge in a scrumptious pancake breakfast on the deck overlooking the beautiful Sunshine Coast. Discover handcrafted treasures, fresh produce and tasty treats from local growers and makers. 7.30am - 12pm.



## RICEBOY SLEEPS



11 MAY: 3 pm & 7 pm

117 Mins | Canada | Drama |

VENUE: MALENY COMMUNITY CENTRE

23 MAPLE STREET MALENY

On one level this is a film about a familiar immigrant experience—a single mother emigrates from Korea to Canada with a young son, and both struggle to fit in. When the son reaches adolescence and behaves like a Canadian teenager, this presents new challenges for his bewildered mother. But it transcends the commonplace with a fresh voice and visuals which complement the superb acting to convey emotions which leave the most hardhearted reaching for the tissues. In the final third of the movie, mother and son visit Korea, and the tone changes – where life was muted and difficult, suddenly the landscape lightens and life opens up. Directed by Anthony Shin (himself a Korean immigrant to Canada), the film has won a number of awards and proved a crowd favourite at festivals.

### MATINEE SCREENING

Doors Open at 2:30 pm for licensed bar, tea/coffee, slices

Movie Starts at 3:00 pm

### EVENING SCREENING

Doors Open at 6 pm.

Movie starts at 7:00 pm licensed bar, tea/coffee, slices

BYO nibbles, meals or restaurant takeaway (Tables provided)

# GYM NEWS

## What type of exercise should older people be doing?

Source: <https://www.healthdirect.gov.au/physical-activity-guidelines-for-older-adults#safely>



There are **4 main types of physical activity** that are important for people of all ages. These include cardiovascular, strength, flexibility and balancing exercises. Previous editions of the community news have looked at the importance of cardio, strength and flexibility activities. The last type of physical activity that can help improve your health and fitness is **BALANCE**.

Activities that help improve your balance can help prevent falls. Balancing activities include things like:

- side leg raises
- half squats
- heel raises

You don't need to attend a gym to undertake these activities but sometimes guidance with a qualified instructor can help ensure these types of activities are done correctly, in turn preventing injury. If you're struggling to find an activity that's right for you, ask your doctor, exercise physiologist or physiotherapist for advice.

The Range Community Gym & Fitness Centre is a not-for-profit community gym offering individual programs and group classes that incorporate cardio, strength, flexibility and balancing activities. Feel free to drop into the gym to take a look at our community facility and/or chat with our instructors, Tina or Paul.

**Range Community Gym & Fitness Centre**

**5 Post Office Rd, Mapleton (behind the Mapleton Bowls Club)**

**[www.rangecommunitygym.com.au](http://www.rangecommunitygym.com.au)**



## MAPLETON FALLS FRIENDS

Our next event will start on **Wednesday 22 May, 2024** meeting at the Mapleton Falls information shelter, in the car park.

Each month, keen volunteers will assist local QPWS&P staff with a variety of activities that will benefit the park.

These tasks may include:

- manual removal of weeds such as exotic pine wildlings and various garden escapees
- minor maintenance and repairs to the walking track
- maintenance tasks including oiling of picnic tables, painting orientation signs
- native revegetation and planting
- rubbish collection
- recording of fauna and flora observations, and more.

All tools, equipment and materials will be supplied and there is no prior experience necessary to join.

### As a volunteer, you can expect to:

- make connections with like-minded people and other local environmental groups;
- learn about the different ecosystems and identify native and invasive species that exist within the park;
- gain hands-on experience with safe work methods and best practice environmental management and trail building techniques;
- enjoy being active outdoors and feel good about helping the environment;
- meet local QPWS Rangers who manage these areas.

Over time we hope members of the '**Friends of Parks – Mapleton Falls**' group will deepen their connection with the area and continue to gain knowledge and appreciation for this section of the Blackall Range.

For more information on this national park visit - [Mapleton Falls National Park | Parks and forests | Department of Environment, Science and Innovation, Queensland \(des.qld.gov.au\)](https://www.des.qld.gov.au/parks-and-forests/mapleton-falls-national-park)

We also run another Friends of Parks group at Kondalilla Falls. Please let me know if you are interested in joining that one as well.

We look forward to meeting you!  
Feel free to reach out if you have any questions

**Michelle Skinner**

Ranger Sunshine Coast

**Note: you will need to complete forms. Please check out the web site above for details or contact the email below. You can bring them along on the day, along with some form of ID.**

**Blackall Management Unit -**  
(Contact [gpwsandp.blackall@des.qld.gov.au](mailto:gpwsandp.blackall@des.qld.gov.au) for more information)

Kondalilla National Park – 2<sup>nd</sup> Wednesday of month  
Mapleton Falls National Park – 4<sup>th</sup> Wednesday of month

**Glass House Management Unit -**  
(Contact [gpwsandp.glasshouse@des.qld.gov.au](mailto:gpwsandp.glasshouse@des.qld.gov.au) for more information)

Currimundi Lake (Kathleen McArthur) Conservation Park – 1<sup>st</sup> Wednesday of month  
Glass House Mountains – 2<sup>nd</sup> Tuesday of month  
Ferry Forest (Beerwah State Forest) – 3<sup>rd</sup> Thursday of month

I'M PARTICIPATING IN THE EXERCISE RIGHT CHALLENGE!




**30 MINUTES,  
30 DAYS IN MAY.**

REGISTER NOW AND JOIN ME! [EXERCISERIGHT.COM.AU](https://exerciseright.com.au)

**Join the Exercise Right Challenge and engage in any movement for 30 minutes a day for 30 days in May. Whether it's hiking, playing sport, attending group exercise sessions or walking – just move!**

The Exercise Right Challenge is designed to support you in creating daily healthy habits and incorporating movement into your regular routine. Let's create a healthier and more active Australia together!

PLUS you'll go into the draw to WIN an LSKD voucher when you register for the challenge. Winners will be selected randomly and not chosen based on performance.

Email to join the challenge - <https://exerciseright.com.au/exercise-right-2024-challenge-sign-up/>

Furthermore, to support Exercise Right's challenge, Active Range has organised a Nature Walk starting at Kondalilla National Park on Friday 24 May at 11am.

Welcome to contact your local Exercise Physiologist Steph Allen at Active Range for full details - [steph@activerange.au](mailto:steph@activerange.au)  
[www.activerange.au](http://www.activerange.au)

## LOCAL SPORTING AND WALKING GROUPS

**Mapleton Bowls Club** Telephone 5445 7913  
[www.mapletonbowlsclub.com.au](http://www.mapletonbowlsclub.com.au)

**Mapleton Tennis Club** [mapletontennis@gmail.com](mailto:mapletontennis@gmail.com)  
[www.tennis.com.au/mapleton-tennis-club](http://www.tennis.com.au/mapleton-tennis-club)

**Montville Tennis Club** [montvilletennisclub1925@gmail.com](mailto:montvilletennisclub1925@gmail.com)  
WWW.ClubSpark/Montville Tennis Club/MONTVILLE TENNIS CLUB Inc. | Tennis Australia

**Maleny Golf Club** Club address: 15 Porters Lane, Maleny  
Telephone: 5499 9960  
Contact name: Stephen Porter - General Manager  
email: [gm@malenygolfclub.com.au](mailto:gm@malenygolfclub.com.au)  
Website: [www.malenygolfclub.com.au](http://www.malenygolfclub.com.au)

**Bush and Beach Walking Group.** Meets Mapleton Public House car park on Tuesdays at 7am (winter start time) and car pools.

**Mapleton Movers** Heart Foundation Walking Group meet in the afternoons every Monday, Wednesday and Friday at the Lilypond's carpark. For enquiries call 0408 756353

# MOTHER'S DAY Morning Tea

LIVE MUSIC  
PERFORMANCE  
BY  
'IMPROMPTU'



**Range Community Gym & Fitness Centre  
Wednesday 15 May at 10.00am**

*(11.00am if it's raining)*

**Lucky door prizes, lots of fun and delicious treats!  
Contributions of yummy treats will be gratefully accepted**

**RSVP by putting your name on the list at the gym  
by Monday 13 May 2024**

**COST \$5.00 per person**



***Montville Village Hall***

**Saturday 22nd of June at 7:00pm**

**Tables of 10 or come join one**

**Only \$20.00 p/p - Over 18's Only**

**WIN  
RANGETOW  
FESTIVAL  
TICKETS**

Reserve Tickets via Email  
[events.mva2021@gmail.com](mailto:events.mva2021@gmail.com)

**BYO SNACKS  
Wine Available  
to purchase at Bar  
NO BYO**



***Roxanne Redacted***

## \$50m towards ending violence against women

\$55.95 million to support domestic and family violence reform in Queensland and help end violence against women.

These reforms include:

- \$5.35 million to establish QCOSS as the new peak body for the DFV sector in Queensland.
- \$16 million to deliver on Queensland's Plan for the Primary Prevention of Violence Against Women 2024-2028, and
- \$34.6 million for DFV training modules and a state-wide Training Support and Coordination Centre.

### Attorney-General and Minister for Justice and Minister for the Prevention of Domestic and Family Violence The Honourable Yvette D'Ath

More than \$50m will be newly invested in Domestic and Family Violence initiatives.

Queensland's Plan for the Primary Prevention of Violence Against Women 2024-2028 is a blueprint to stop violence from occurring in the first place.

New Framework to strengthen and inform domestic and family violence (DFV) training across the State.



The Miles Government will invest \$55.95 million in DFV initiatives, including the rollout of a new plan designed to help end violence against women and the establishment of a peak body for the sector.

The initiatives are recommendations from The Women's Safety and Justice Taskforce *Hear Her Voice Report One* and build on the government's momentum to end domestic and family violence.

The five-year Plan for the Primary Prevention of Violence Against Women will aim to prevent violence from occurring in the first place to reduce the number of victim-survivors and the demand on the criminal justice and service system.

It's goal to prevent violence before it starts requires a whole-of-society approach in addressing the systems, structures, norms, attitudes, practices and power imbalances that drive this violence.

<https://statements.qld.gov.au/statements/100107>

**Remember the Sunshine Sanctuary, Nambour** which offers accommodation and essentials for women and children who have been able to break away from the home situation.

Towels, unwanted mobile telephones, teal towels and new clothing for children and women are currently being collected by the volunteers of the Mapleton Library and Community Centre.

Drop them in any time during opening hours and the volunteers will put your donations aside for the next delivery. Two large deliveries have already been made - thank you is extended for your generosity.



If you are new to the area or you now have spare time—consider joining one of the many community groups.

Check the posters at the end of this edition.

Your new friends are waiting for you.

## Recent Development Applications in Divisions 5 and 10

This is an initiative of Pop Up Community News aimed at providing information and heightened awareness as to developments in our region. Hopefully the information will provide a spring board should anyone wish to dive deeper into any specific application. Using the link: <https://developmenti.sunshinecoast.qld.gov.au/> or entering "development i sunshine coast" into a browser will take you to the Development i home page. Click on "Application Search" and enter the application number. Select "Details" if you want to dive deeper. The supporting documents can typically be downloaded or viewed by selecting "Application Documents" in the right hand section of the screen.

In the listings below, typically a brief editorial comment is provided after each application description. These are shown in *italics*.

**Lodged: 19/04/2024 DA#: MCU23/0314.01**

51-53 Park Rd NAMBOUR - Minor Change to Development Approval - Addition of Secondary Crossover & Relocation of Proposed Carport - Brivan Family Trust - Urban Catalyst 3 Pty Ltd. *Relates to approved DA# MCU23/0314 approved March 2024. Minor change highlights the difference in status between dual occupancy and secondary dwelling.*

**Lodged: 24/04/2024 DA#: RAL24/0027**

12 Howard Lane MALENY & 1163 Landsborough Maleny Rd MALENY - 2 Into 2 Lots - Jodie and Dale Diefenbach - RPS AAP Consulting Pty Ltd. *Reallocation of approx. 700m2 from one acreage block to the neighbouring acreage block.*

**Lodged: 24/04/2024 DA#: MCU24/0103 & OPW24/0157**

709 Aherns Rd CONONDALE - Dwelling House plus Earthworks - Karen and David Fuller. *New 3 bed, plus MPR, 4 bath, 2 garage dwelling on acreage with existing shed and secondary dwelling.*

**Lodged: 24/04/2024 DA#: POS24/0059**

38 Landershute Road PALMWOODS - Drainage Easement and Vegetation Covenant only as per Conditions 77, 78, 79 and 87 of MCU20/0257.01 - Copy of SP345788 (Plan of Easement F & Covenant G in Lot 1 SP320914 - DSQ Land Surveyors. *Relates to previous applications.*

**Lodged: 23/04/2024 DA#: OPW24/0156**

1 Harvest Rd YANDINA - Stormwater, Drainage work, Earthworks, Landscaping, Vehicle Crossover, Footpath - ICDG3 Unit Trust - Ingeniir Pty Ltd. *Relates to MCU23/0199 approved January 2024.*

**Lodged: 26/04/2024 DA#: MCU24/0104 & OPW24/0158**

63 Old Gympie Rd YANDINA - Dual occupancy plus Landscaping & Vehicle Crossover - NuTrend Quality Homes - Murray & Associates (Qld) Pty Ltd. *2 by 3 bed, 2 bath, media, 2 garage, 2 crossover dwellings on 1000m2. Total area floor area and under hard surface 482m2.*

**Lodged: 24/04/2024 DA#: POS24/0034**

179 Elouera Dr NORTH ARM - SP344218 - Reconfiguration 1 lot into 2 - Alexandra Divall. *Relates to RAL22/0081 approved March 2023. Approving Plans.*

**Lodged: 02/01/2024 DA#: RAL24/0001**

23 Stevens St YANDINA - Reconfiguring a Lot for Subdivision (1 into 2 lots) - National Solutions Group Pty Ltd - Locality Planning & Consulting. *Initial application not lodged correctly. Creation of a new 788m2 lot from existing 2108m2 lot of which approx. 300m2 is access driveway.*

---

**Messy play matters**

**Sunshine Coast  
Free Messy Play Day for families**

**REGISTRATION REQUIRED TO ATTEND**

Grab a friend, come along and discover Messy Play Matters.  
For more information and to register to attend, please visit:  
<https://playmatters.org.au/events>

**Date:** 22nd May, 2024  
**Time:** 9:30am - 12:00pm  
**Venue:** Nambour Showgrounds, Coronation Avenue

Messy Play Experiences | Soft Play | Parent & Bub Sensory Zone  
Coffee Vans | Sausage Sizzle | Live Music & much more



Play Stars is proudly funded and supported by the Queensland Government



## SOLAR PANEL RECYCLING IN QUEENSLAND

The Smart Energy Council, in partnership with the Queensland Government, is launching a solar panel recovery and recycling scheme.

We're making more solar panels in Australia, and now the Queensland Government has announced we'll be recycling them here in Queensland. Thousands of solar panels on homes, businesses and solar farms will now avoid landfill to be re-purposed for parts.

To read more about this Australian-first pilot program, which includes a \$2.5m investment to keep solar panels out of landfill use the link below.

<https://smartenergy.org.au/solar-panel-recycling-pilot/>



## Kenilworth ArtsFest - 17th to the 19th of May

Hosted by the Kenilworth Arts Council (KAC) and the Chamber of Commerce, the Kenilworth ArtsFest has been held in Kenilworth for over the past

25 years!

Come along for a weekend of a whole range of arts activities, from visual arts and sculptures to music and live poetry!



## Big Pineapple Festival locked in for this October!

After a three-year hiatus, the Big Pineapple Festival is returning to Nambour!

With the cancellation of Groovin the Moo and the Caloundra Music Festival this year, very happy to hear the Big Pineapple Festival is still going ahead.

The Big Pineapple Festival Is Returning to the Sunshine Coast in 2024 for the First Time in Three Years. In October, when the music fest returns from hiatus, you'll be able to dance to live tunes in the shadow of a giant piece of fruit. On Australia's list of big things, the Big Pineapple is among the most famous.

<https://www.google.com/searchq=big+pineapple+festival+2024&rlz>

## VOLUNTEERS NEEDED TO HELP KEEP OUR COMMUNITY SAFE

The Mapleton and Kureelipa Brigades are seeking volunteer fire fighters. Training and personal protective equipment is provided. Contact the numbers below for more details:

**Mapleton Rural Fire Brigade Telephone 0499 778806**

0499 883019

**Kureelipa Rural Fire Brigade Telephone 0408 710156;**

5476 0281

**Dulong area 5441 2538**

**Community brochure and poster display** on the verandah of the

**Mapleton Library and Community Centre.**

If your organisation has brochures or short term posters, consider adding them to this community service.

If you are looking for information, check out this collection.



**Currently overflowing with posters and brochures—there is something for everyone.**

SATURDAY

June 1<sup>st</sup>  
2:30pm

SUNDAY

June 2<sup>nd</sup>  
2:30pm

# the MAPLETON CHOIR

conducted by Brian Martin

TICKETS

\$20

Afternoon tea  
included



presents

## Making Music from Mozart to Mercury

MADCA

Connecting community

With acknowledgement for their kind and invaluable support in 2024

For ticket purchases use this link <https://www.trybooking.com/CRAQG>

Book on line NOW and ensure your seat.



## \$5m package lays the foundations for the Direct Sunshine Coast Rail

### A new rail line for South East Queensland

The Direct Sunshine Coast Rail Line would connect the Sunshine Coast community between Beerwah, Caloundra, Birtinya and Maroochydore to Moreton Bay, Brisbane and beyond.

This new rail line would tie into the existing North Coast Line, north of Beerwah Station. Trains operating on the proposed Direct Sunshine Coast Rail Line will continue to the Brisbane CBD and beyond, without passengers needing to transfer at Beerwah in peak periods.

Once open, the Direct Sunshine Coast Rail Line would be the fastest and most reliable way to travel between the eastern area of the Sunshine Coast and Brisbane in peak hour, with rail passengers saving over 45 minutes compared to driving.

### Project update

The detailed business case for the Direct Sunshine Coast Rail Line is completed.

The new 37.8km dual track rail line between Beerwah and Maroochydore will be the longest spur line ever delivered in South East Queensland.

The Queensland Government will deliver the rail corridor progressively, with Stage 1 to be delivered by 2032 pending matched funding from the Australian Government. Staging means passengers would start using this rail line sooner. Delivery of this rail line will also help the Sunshine Coast to sustainably prepare for population growth by accelerating the delivery of more than 3,000 affordable and diverse homes around new rail stations over the coming decade.

The business case recommended delivering this project progressively due to the length of the corridor, unique risks associated with some sections, and the time required for construction.

<https://www.yoursay-projects.tmr.qld.gov.au/direct-sunshine-coast-rail>

# LIST OF COMMUNITY ORGANISATIONS

## A COMBINED LISTING FOR FLAXTON, KUREELPA, MAPLETON AND MONTVILLE

**Blackall Range Care Group Ltd** [www.rangecare.com.au](http://www.rangecare.com.au)

**Blackall Range Lions Club** E: [blackallrangelionsclub@outlook.com](mailto:blackallrangelionsclub@outlook.com);  
[facebook.com/blackallrangelionsclub/](https://www.facebook.com/blackallrangelionsclub/) ; <http://www.brhc.org.au>

**Blackall Range Visual Artists** [www.blackallrangevisualartists.com.au](http://www.blackallrangevisualartists.com.au)

**Blackall Range Woodcrafter's Guild Inc.** Meets Montville Sports Ground 230 Balmoral Rd Montville. Open 8.00am to 11.30am Mondays to Saturdays.

**Blackall Range Zonta Club** Email: [info@zontablackallrange.org.au](mailto:info@zontablackallrange.org.au)  
[www.zontablackallrange.org.au](http://www.zontablackallrange.org.au)

**Bush and Beach walking group.** Meets Mapleton Public House car park on Tuesdays at 7am (winter start time) and car pools.

**Hinterland Quarry Action Group**  
Anne Veivers 0416 155 116; [aveivers@iprimus.com.au](mailto:aveivers@iprimus.com.au)

**History Group** [montvillehistorygroup@gmail.com](mailto:montvillehistorygroup@gmail.com)

**Kureelpa & Dulong Community Hall** [kureelpahall@gmail.com](mailto:kureelpahall@gmail.com)

**Mah-jong** Telephone 5476 6982 . Wednesday weekly at  
Mapleton Bowls Club.

**Maleny Golf Club Club** address: 15 Porters Lane, Maleny  
Telephone: 5499 9960  
Contact name: Stephen Porter - General Manager  
email: [gm@malenygolfclub.com.au](mailto:gm@malenygolfclub.com.au)  
Website: [www.malenygolfclub.com.au](http://www.malenygolfclub.com.au)

### **Mapleton and District Community Association**

[madca@gmail.com](mailto:madca@gmail.com) <https://www.facebook.com/madca4560>

**Mapleton Art** Thursdays weekly at Mapleton Library and Community Centre. Contact: [mapletonlibrary@gmail.com](mailto:mapletonlibrary@gmail.com)

**Mapleton Bowls Club** Telephone 5445 7913  
[www.mapletonbowlsclub.com.au](http://www.mapletonbowlsclub.com.au)

**Mapleton Bridge Club** [Mapleton.bridgeaustralia.org](http://Mapleton.bridgeaustralia.org)  
[mapletoncontractbridgeclub@gmail.com](mailto:mapletoncontractbridgeclub@gmail.com)

**Mapleton Choir** Kureelpa Hall 7pm, Mondays Contact:  
[themapletonchoir@outlook.com](mailto:themapletonchoir@outlook.com)

**Mapleton Country Market** every 4th Saturday at the Mapleton State School car park. Contact Paula 0419 726603 email: [countrymarket.mapleton@gmail.com](mailto:countrymarket.mapleton@gmail.com) or find us on Facebook.

### **Mapleton Library and Community Centre**

[mapletonlibrary@gmail.com](mailto:mapletonlibrary@gmail.com)  
[www.mapletoncommunitylibrary.com](http://www.mapletoncommunitylibrary.com) Telephone 5445 7011

**Mapleton Craft Group** Wednesdays 9-12noon, Mapleton Bowls Club

**Mapleton Hall and Sportsgrounds** [mapletonhall@gmail.com](mailto:mapletonhall@gmail.com)

**Mapleton Men's Shed** [www.mapletonmenshed.org.au](http://www.mapletonmenshed.org.au)

**Mapleton Movers** Heart Foundation Walking Group meet in the afternoons every Monday, Wednesday and Friday at the Lilypond's carpark for enquiries call 0408 756353. Check for summer and winter times.

**Mapleton Quilters** Mondays 9-12 noon, Mapleton Bowls Club

**Mapleton RSL Sub Branch** Matt Dykes  
0427263595; [mdykes7@gmail.com](mailto:mdykes7@gmail.com)

**Mapleton Rural Fire Brigade Telephone** 0499 778806; 0499 883019

**Mapleton Tennis Club** [mapletontennis@gmail.com](mailto:mapletontennis@gmail.com)  
[www.tennis.com.au/mapleton-tennis-club](http://www.tennis.com.au/mapleton-tennis-club)

**Montville Anglican Church** [huesong2@gmail.com](mailto:huesong2@gmail.com)

**Montville Chamber of Commerce**

montvillechamber@gmail.com

**Montville Masonic Lodge** montville260@outlook.com

**Montville Rural Fire Bridage** montville.rfb@bigpond.com

**Montville School P&C** msspandcpresident@gmail.com

**Montville Tennis Club** montvilletennisclub1925@gmail.com  
WWW.ClubSpark/Montville Tennis Club/MONTVILLE TENNIS CLUB Inc. |Tennis Australia

**Montville Uniting Church** minister@ourcommonlife.org.au

**Montville Village Association** secretary.mva@gmail.com  
www.montvillevillageassociation.org.au

**MVA MARKET** montvillemarket.mva@gmail.com

**RangeCare OP SHOP** 17 Obi Obi Road

**Probus Club of North Blackall Range** Secretary 0493 632703  
nbrprobus@gmail.com

**Range Community Gym and Fitness Centre**  
mapletongym@gmail.com www.rangecommunitygym.com.au

**RANGE United Soccer Club** info.rangeunited@gmail.com

**Sunshine Coast U3A** u3aoffice@u3asunshine.org.au

**The Flaxton Craft Group** lkathypatterson@gmail.com

**The Range Community Kindergarten**

www.rangekindy.qld.edu.au

**Wildlife Volunteers Association Inc (WILVOS)**

Hotline 5441 6200 www.wilvos.org.au

**Mapleton Community Facebook page**

www.facebook.com/groups/mapletonqueensland/

**Montville Community Facebook page**

www.facebook.com/groups/780987252874906/

**Flaxton Community Facebook page**

www.facebook.com/groups/388815358233538

**Happenings – Montville and surrounds email newsletter**

Subscribe: www.montvillevillageassociation.org.au/subscribe-to-happenings/ Editor.mvahappenings@gmail.com

**SCHOOLS**

**Blackall Range Independent School**

office1@brschool.com.au

**Mapleton State School** principal@mapletonss.eq.edu.au

**Montville State School**

admin@montvilless.eq.edu.au



**If your organisation is not listed, please let me know. Many thanks, nita**

**mapletonqueensland@gmail.com**



## RECYCLING IN MAPLETON

**SPECTACLES AND MOBILES** are collected by Lions at the Mapleton Library and Community Centre and the Mapleton Bowls Club.

### CANS and BOTTLES - Containers for Change

**Mapleton Bowls Club** - There is a convenient collection point which is a wheelie bin placed near the entrance. Bins can be distinguished from others by its bright blue lid.

**Mapleton State School P & C.** All your donations would be gratefully received and will go towards resources for our school and students.

**Mapleton Men's Shed** These may be left in the bins in front of the storage shed in Mapleton Forest Drive.

**RangeCare** All fund raised will improve services for their clients. 360-362 Flaxton Drive Flaxton; 36 Doolan Street, Nambour; 17B Bean Street, Maleny.

**Please do not crush the cans you deposit for recycling.**

### MOBILE TELEPHONES

Roger Loughnan Real Estate, corner Post Office Road and Obi Obi Road Mapleton, is a registered drop off location for people to donate their old working phones with chargers etc. The staff will deliver these to DVSafe Phone. **Also place in any Lion's spectacle box.**

**Plastic lids from drink bottles only—**collection container on the Mapleton Library Centre verandah



**Blister packs—**plastic container on the Mapleton Library Centre verandah



**Used pens—**plastic container on the Mapleton Library Centre verandah

**Tooth brushes—**plastic container on the Mapleton Library Community Centre verandah

**YARN LIBRARY-** Sewing, knitting and embroidery items to swap—containers inside the Library Centre



**PLANT LIBRARY** – there is a stand outside where you can leave plants some one else might like.

**THANK YOU** to all who have already recycled many of the above items.



## **Procedures for Pop Up Community News management**

The Pop Up Community News was launched in 2016. The News has gone through many changes with no one organisation controlling the News—it is truly a community news: for the community by the community. Auspiced by the Mapleton Library and Community Centre since 2016 which provides insurance, financial support and much more.

The News offers opportunity to promote events and provide information to all community groups right across the Range and the surrounding hinterland

**Thank you everyone.**

**The Pop Up Community News is edited, published and distributed by volunteers.**

**There will be no discussion or correspondence on matters pertaining to the Pop Up Community News.**

- All articles for the Pop Up Community News are to be sent to [mapletonqueensland@gmail.com](mailto:mapletonqueensland@gmail.com)
- If it is important to have an article included in a specific edition, forward article as early as possible. Generally the cut off time for publication is noon Tuesday each week but as this is a fully volunteer publication inclusion is not guaranteed.
- Articles can be emailed at any time. Please include contact name and contact details.
- All articles are to be sent digitally unless otherwise pre-arranged.
- Pop up Community News is published weekly but open to review at any time. A short holiday over Festive Season each year to give the volunteers a well earned holiday.
- Currently Thursday night for distribution is the target time.
- No lost animals, political, religious, personal opinions or missing person notification will be published.
- Negative or derogatory comments will not be published.

Email [mapletonqueensland@gmail.com](mailto:mapletonqueensland@gmail.com) requesting guidelines.

Anyone wishing to receive the Pop Up Community News, send your email address to [mapletonqueensland@gmail.com](mailto:mapletonqueensland@gmail.com)

Anyone wishing to cease receiving the Pop Up Community News, send your email to [mapletonqueensland@gmail.com](mailto:mapletonqueensland@gmail.com)

**Keep informed through the web and social media**

[www.facebook.com/groups/mapletonqueensland/](http://www.facebook.com/groups/mapletonqueensland/)

[www.mapletoncommunitylibrary.com](http://www.mapletoncommunitylibrary.com)

**Remember if you wish to receive the**

**POP UP COMMUNITY NEWS**

**Email [mapletonqueensland@gmail.com](mailto:mapletonqueensland@gmail.com)**

**Current circulation over 4,260**

