



# POP UP COMMUNITY NEWS

Mapleton and surrounds, Queensland

25 January 2024

Issue 376

## WHAT IS ON THIS WEEKEND?

**\*\* Sunday 28th January, Come and Try Tennis, Mapleton Courts**

**More details below.**

### MAPLETON TENNIS

There will be a free COME and TRY DAY at the Mapleton courts beside the Hall on Sunday 28 January from 2 pm to 5 pm.

Racquets and balls supplied plus there will be plenty of volunteers of all standards to help you have a hit.

Adults, kids, former players, beginners all welcome.

Free refreshments supplied.

This will help you keep that New Year's resolution to get out and get active.

There is no need to book, just turn up.

Misty rain will not be a problem, we will simply play on.

Why not bring a friend?

St George's in the Hills  
2024 Concert Series

## HARP WONDERLAND

*An intimate performance of harp, guitar  
and mandolin with Graham Langdon  
and Rowena Thomas*



**3pm, Sunday 25th February**

St Georges Church, 2 Walkers Drive Maleny  
Tickets \$25 at [Humanitix.com](https://www.humanitix.com)



General Enquiries—ph Susan 5494 3062  
or visit [malenyanglican.com.au/events](https://www.malenyanglican.com.au/events)

## 376th EDITION CONTENTS

**What is on this weekend**  
**Mapleton Tennis**  
**Wonderland Harp**  
**Mapleton History Group**  
**Walk**  
**Mapleton Bowls Club**  
**Stand by Action Training**  
**Speak up now**  
**QCCC**  
**Reception this way ...**  
**Mapleton Choir**  
**Thank you Residents**  
**Development Applications**

**Lovers of Books**  
**Butterflies**  
**Mapleton Hall**  
**Sporting Awards**  
**Supporting Businesses that**  
**support the Community**  
**Fauna and Flora**  
**Community Services**  
**Date Claims**  
**Repeat Articles**  
**Contact details of Local**  
**Organisations**



### Mapleton History Group

Talking Country Building Bridges has evolved from expressions of interest by Mapleton residents for opportunities to learn about the indigenous culture of this region, to a broader examination of local and Queensland history with a focus on the interface of First Nations history and culture with the early settlers in this region.

Last year Tony Millroy gave a series of four history talks and engaged the attendees of the Mapleton History Group in discussions leading to greater understanding of our history. With the defeat of the Constitutional Referendum truth-telling about and understanding of our history takes on an even greater importance.

This year Tony will continue to share his knowledge of history for the Mapleton History Group.

The next get together of the **Mapleton History Group** will be on-

**Monday 26 February**

**at 6:30pm - 8:15pm.**

**the Green Room the Mapleton Public House.**

We will have exclusive use of the Green Room with the bar being open for drinks. Tea and coffee will also be served. The restaurant will be closed. We will provide cheese and crackers. Come early to purchase drinks and chat.

Tony's selected readings for this event are focused on Libby Connors work on the Aboriginal leader Dundalli and South East Queensland's social conditions of the late 1850s, particularly the fear of attack from Aboriginal groups.

**Join us for an evening of discussion and shared knowledge.**

To obtain the readings email. [info@talkingcountrybuildingbridges.com](mailto:info@talkingcountrybuildingbridges.com)



### Bergann's Lane - Witta

This relaxing walk is a wide grassy lane meandering through rainforest with paddocks on either side. The walk traverses the original footpath from Bergann's Rd to Witta Rd used by school children in the early 1900's.



## MAPLETON BOWLS CLUB

Following on from the refurbishing the green, in preparation for 2024 play, the rinks must be re-marked. A team of 11 worked together using string lines and straight edges to complete this task. A team of five worked at end of the green simultaneously and completed the job in under two hours.

### Bystander Action

### Training



#### Overview

When we speak of domestic and family violence, the majority of people think of physical violence and visible injuries. Domestic and family violence includes a range of acts and behaviours that function to control and exert power over another person with whom there is a relevant relationship.

Bystander Action Training is about building communities that do not allow violence against women to continue. Each of us has a part to play in preventing domestic violence and family violence.

The Bystander Approach offers a framework in which everyone has a positive role to play in violence prevention and intervention.

#### Aim

Participants will gain understanding of what constitutes violence against women and awareness of the harm caused by violence against women.

#### Learning Objectives

- How to speak up and challenge attitudes, beliefs and behaviours that perpetuate violence against women.
- What it means to be an active bystander.
- The tools you need to make a difference within your families, peers, workplaces and communities.



Participants will discover that collective and individual actions can prevent and respond to domestic and family violence.

#### Format

4-hour face-to-face or virtual workshop.

#### Resources

Printed copy of Slides

To Register and view our other open workshops

[CLICK HERE](#)

Or enquire about exclusive training for your workplace:

E: [lifeline.training@uccommunity.org.au](mailto:lifeline.training@uccommunity.org.au)

# Domestic & Family Violence Bystander Action Training



TUESDAY 5 MARCH  
8:45AM - 1PM  
@ THE MALENY  
NEIGHBOURHOOD CENTRE

Speak Up Now is offering community members the opportunity to participate in a FREE active bystander awareness workshop.

This accredited training has been sponsored and supported by the Sunshine Coast Regional Council.

Participants will gain an understanding of what constitutes domestic and family violence and how to speak up and challenge attitudes, beliefs and behaviours that perpetuate such violence.

For further information or to register before 19 Feb, please email Val at: [speakupnowstopdomesticviolence@gmail.com](mailto:speakupnowstopdomesticviolence@gmail.com)



Proudly supported by  
Sunshine Coast Council's grants program

## Group facilitation skills training for QCCC CAMPFIRE Interns



### QCCC WEEKLY ACTIVITY:

Term One is underway. Traditionally Term One would be the busiest term as schools made the most of school camp to bond new cohorts of students and run Leadership Camps for Grade 12 groups. These days each Term is as busy as the other because of increased demand for camps, and some preferring to do camp in the dryer and cooler winter months.

However, Term One is still very busy at Mapleton. Over the Long Weekend a large Family Reunion group has the venue to themselves, we hope they can still make the most of our facilities despite the forecast for rain. Monday sees two schools arriving, both are Grade 7 Camps which is typical of High Schools using camp in the early weeks of Term One to build relationships between students drawn from several primary schools.

Their place is taken on Wednesday by three incoming schools. A Grade 5/6 Camp from the Sunshine Coast, a Grade 6 Camp from Brisbane and a Grade 7 Camp from Toowoomba. This week our interns have also started their journey towards qualifications in Outdoor Leadership and our instructors have been having their refresher training for the Survival Skills programs we run on a property near Noosa.





## RECEPTION THIS WAY: MOTELS – A SENTIMENTAL JOURNEY WITH TIM ROSS

Sat 27th January to 16 March – check first.  
Caloundra Art Gallery, 22 Omrah Ave, Caloundra, 4551

Travel around Australia revisiting your memories of the classic Aussie motel, from family holidays and long road trips to continental breakfasts and mid-century mod-cons. In a land where the car has provided us with the ultimate freedom to hit the road and explore, it is no surprise that Australians wholeheartedly embraced the American concept of the motel. When motels began springing up in the 1950s, they represented a new, stylish and sophisticated way to travel.

Join the National Archives and Tim Ross on a driving holiday through the quintessential Australian experience of staying in a motel. And find out why these images are part of the National Archives' collection. This exhibition is supported by the National Collecting Institutions Touring and Outreach Program, an Australian Government programme aiming to improve access to the national collections for all Australians.

# SING: JOIN A CHOIR

We sing on Monday nights from 7pm-9pm at the Kureelpa Hall.

Rehearsals commence on Monday 5<sup>th</sup> February with a new conductor.

We are a non-audition choir and new members will be warmly welcomed.

Any questions please email [themapletonchoir@outlook.com](mailto:themapletonchoir@outlook.com)

Or call 0407 156 708

In 2024 we give sincere thanks to MADCA who are  
generously supporting the choir with a grant.

## the MAPLETON CHOIR

since 1983

**HUGE THANK YOU TO THE GENEROUS COMMUNITY MEMBERS FOR THE AMAZING DONATIONS LEFT AT THE MAPLETON LIBRARY AND COMMUNITY CENTRE.**

**ITEMS FOR DOMESTIC VIOLENCE VICTIMS**



**Special request for the following items has been received.**

Tea-towels

Towels

Undies [ladies all sizes, plus children all sizes]

These would be appreciated.



**Remember Lions is collecting mobile telephones.** Drop any unused mobiles you have into the Library Centre and these will be collected by Lions who forward them to the domestic violence victims support group.



---

**RECENT DEVELOPMENT APPLICATIONS  
Divisions 5 and 10**

This is an initiative of Pop Up Community News aimed at providing information and heightened awareness as to developments in our region. Hopefully the information will provide a spring board should anyone wish to dive deeper into any specific application. Using the link: <https://developmenti.sunshinecoast.qld.gov.au/> or entering "development i sunshine coast" into a browser will take you to the Development i home page. Click on "Application Search" and enter the application number. Select "Details" if you want to dive deeper. The supporting documents can typically be downloaded or viewed by selecting "Application Documents" in the right hand section of the screen.

In the listings below, typically a brief editorial comment is provided after each application description. These are shown in *italics*.

**Lodged: 16/01/2024 DA#: MCU24/0008**

46 Baroon Pocket Dam Road NORTH MALENY - Short Term Accommodation - 3 x Cabins - Sarah Davies - RPS AAP Consulting Pty Ltd. *Actually off Eden Road. 21m2 living area cabins.*

**Lodged: 18/01/2024 DA#: OPW24/0013**

99 Chevallum Rd PALMWOODS - Filling for Equestrian Arena - Jo Anne Cowley - Smallwater Consulting Pty Ltd. *Part of a long series of changes to the property. Operational works.*

**Lodged: 18/01/2024 DA#: POS23/0259**

175 Ninderry Road NINDERRY - Survey Plan SP342417 (2 Lots) - Murray & Associates. *In relation to previously approved subdivision of 1 lot into 2. See DA#: RAL22/0131.*

**Lodged: 18/01/2024 DA#: OPW24/0014**

9 & 15 Mill St NAMBOUR - Earthworks - Medicentre Property No. 3 Pty Ltd - ADAMS + SPARKES Town Planning. *Could not find any previous Development Applications for these properties.*

**Lodged: 19/01/2024 DA#: MCU24/0010**

96 Parsons Knob Rd WEST WOOMBYE - Short-Term Accommodation (8 Cabins) - KMD Evolution Pty Ltd - Town Planning Strategies. *Series of 8 cabins ranging from 53m2 to 67m2, all with 2 bedrooms, kitchen and bathroom plus living. Larger plan has main ensuite.*

**Lodged: 19/01/2024 DA#: MCU22/0257.02**

17 Western Ave MONTVILLE - Minor Change to Approval - Dwelling - Mr A and Ms A Robinson - Alan Holliday Pty Ltd. *Change to previously approved MCU22/0257.*

---

**LOVERS OF BOOKS EVENT  
WEDNESDAY 14 FEBRUARY 2024  
MAPLETON LIBRARY AND COMMUNITY CENTRE  
5.30PM-7.30PM**

Did you know that 14 February is International Library Lovers' Day and so it is incredibly fitting that our local library in Mapleton turns on its special annual event to showcase local authors and illustrators.

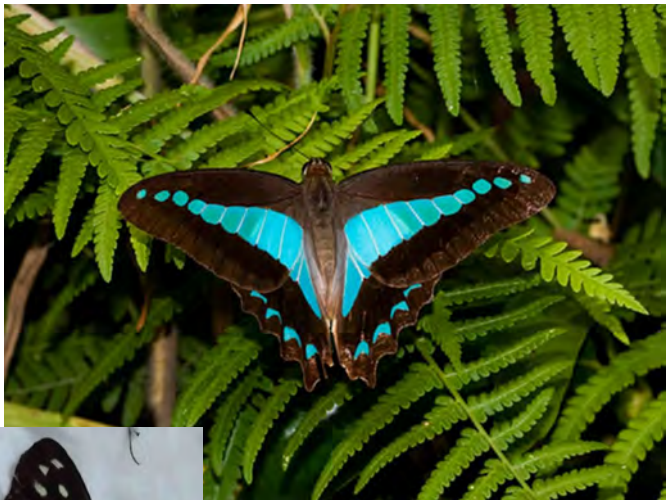
Our volunteers work hard to bring you interesting people with unique stories to tell – either novel, memoir, poetry, children's story, historical, sci fi or romance.

The event is entirely volunteer-run – including the catering! Lovely library full of lovely people doing lovely things.

If you would like to attend, you can visit the Mapleton Library and Community Centre and pay directly or go online to [www.trybooking.com/events/landing/1160437](http://www.trybooking.com/events/landing/1160437)

Cost is \$10 per person including a glass of wine and snacks.

**A perfect way to end your day or start your evening.**



The triangles are moving though the Sunshine Coast and Hinterland.

Above: Blue triangle

Left: Pale triangle

## **An update of classes/groups for 2024 at Mapleton Public Hall**

CHILDRENS dance classes have extended their times for 2024, recommencing next Monday - (4 times per week, School term) Monday, Tuesday, Wednesday afternoons and Thursday mornings.  
Contact Dawn

[dawn@thedanceacademy.com.au](mailto:dawn@thedanceacademy.com.au)

Chimes playing — (U3a )Tuesday mornings, recommencing next Tuesday

Contact Wendy

[wrturton@hotmail.com](mailto:wrturton@hotmail.com)

Pilates — Friday morning

Contact BRCG

[servicesord20@brcg.org.au](mailto:servicesord20@brcg.org.au)

Dance Fitness - Monday and Thursday evenings

Contact Karen

[cultivatesunshinecoast@gmail.com](mailto:cultivatesunshinecoast@gmail.com)

There are days/times still available for permanent or one off hires.

Kind Regards,

Lindsey Wareham

Mapleton Hall & Sportsground Trustees,

[mapletonhall@gmail.com](mailto:mapletonhall@gmail.com)

---

## **IT'S TIME FOR SUNSHINE COAST SPORTING COMMUNITIES TO SHINE BRIGHT!**

Sunshine Coast Sports Awards recognise the outstanding achievements of athletes and teams, officials, coaches, volunteers, administrators, and clubs and associations from grass roots to high performance.



The awards uphold Sunshine Coast Sports' core values and commitment to the development and progression of our sportspeople.

A comprehensive suite of quarterly and annual awards are on offer.

Nominations will be assessed by an independent panel of experienced sports administrators from the Sunshine Coast and Noosa regions.

Nominations for Quarter 3, 2023 are now OPEN.

### **WHO CAN NOMINATE?**

To be eligible for an award, nominees must be:

- A permanent resident, both during and outside of competition periods, of the Sunshine Coast or Noosa local government areas; or
- Represent or be a life member of a sporting club or association based on the Sunshine Coast or Noosa local government areas; or
- Live away from the Sunshine Coast or Noosa local government areas solely to attend tertiary education or to participate in a recognised high performance pathway aligned to a sport governing body; or
- Have at least one parent who resides permanently on the Sunshine Coast or Noosa local government areas and the nominee has been attending tertiary education or participating in a recognised high performance pathway aligned to a sport governing body over the preceding four years.

Complete the nomination form online:

<https://sunshinecoastsports.com.au/annual-awards>

---

## INFORMATION REQUESTED

Are the flowering crepe myrtles in Mapleton the native Australian species?

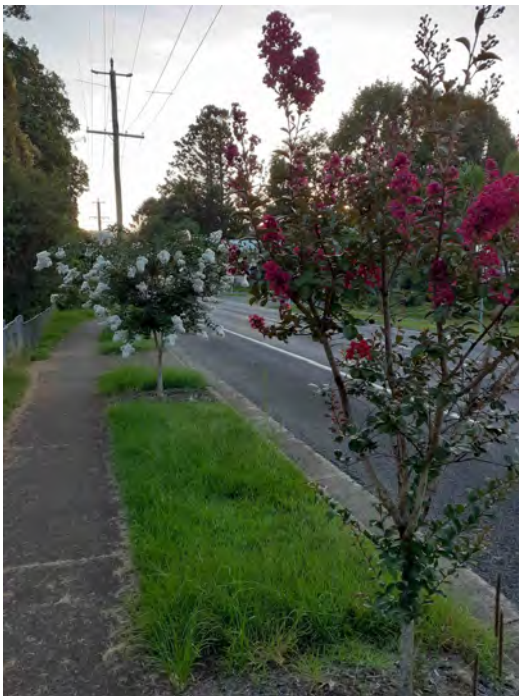
No, reportedly the plants in flower along Obi Obi Road are ***Lagerstroemia indica***.

They are native to eastern Asia and grow well in most parts of Australia.

A deciduous tree about 6-8m tall. It is often severely pruned and grown as a shrub 3-4m tall. Trusses of white, pink, mauve or purple blooms appear in late summer.

The petals are ruffled, with a crepe like texture. In autumn the green leaves turn yellow, orange or red (depending on the variety) before falling. Unpruned crepe myrtles develop beautifully coloured, smooth, mottled trunks.

Crepe myrtles are among the world's best flowering trees.



Above: close up of *Lagerstroemia indica* flowers and part of the lengthy row planted on the verge of Obi Obi Road, Mapleton

**The Australian native crepe myrtle, *Lagerstroemia archeriana*, which grows to around 7m tall and has pink mauve flowers. A tropical rainforest species. Flower below.**



## BUFF-BANDED RAIL

*Gallirallus philippensis*



Above: Adult Buff-banded Rail with fluffy black chick

Right: Adult Buff-banded Rail



This shy, retiring rail was recently seen by the Lilyponds by a Mapleton Gym member as it was slinking quietly through the grass. Like other rails it has a habit of nervously flicking its tail. It rarely flies when alarmed but runs away very quickly.

This secretive bird is often glimpsed as a fleeing shape close to the ground. However, if closely observed in full sunlight, the brown, black and white patterns on its feathers are quite beautiful. Recognisable features of this 28-32 cm long bird are the black-brown crown and a broad white eyebrow stripe. The rest of its upper parts are black-brown flecked with white. The throat is a dirty white to grey while the rest of underparts are black and white except for the buffy-orange mid-chest band on the upper breast – “the buff-banded”.

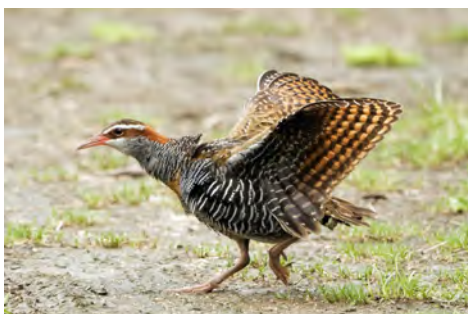
They usually live and feed close to dense cover of swamp vegetation where they can hide if disturbed. In many places it has managed to survive close to human settlement, at times frequenting back yards and fowl houses.

Their food consists of insects, small molluscs and other invertebrates, seeds and a little other vegetable matter.

They breed in spring and summer. The nest is well hidden consisting of grass and reeds pulled down and woven into a cup. Chicks are fluffy black with a dark bill while juveniles are duller than adults and lack the chestnut nape and breastband.

In Australia Buff-banded Rails are widespread coastally and erratic and uncommon further inland. Beyond Australia it is widely distributed from islands in the eastern Indian Ocean through Celebes to New Guinea and neighbouring islands and the Philippines. It also occurs on islands of the south-west Pacific to New Zealand.

Contributor: Eric Anderson Thank you



**LOCAL**

## ***Geodorum densiflorum***

Shepherds crook orchid

This terrestrial orchid, which grows to 40cm and is dormant over winter, likes well drained sandy soils. *Geodorum densiflorum* has distinctive pleated leaves, and the pseudobulbs together with the bell shaped flower, make it look like a lily – until you look into tubular bells at the deep pink orchid structure inside.

A combination of rain and warmth this summer has produced perfect conditions for shepherds crook orchids.

Occurs in the Kimberley region in Western Australia, in the northern parts of Northern Territory and from Cape York, Queensland to the Mackay River, New South Wales where is listed as endangered.

Also distributed extensively throughout the Pacific, occurring in New Caledonia, New Guinea and Indonesia, and across South East Asia to Japan. It also occurs in Sri Lanka.

You won't find this little beauty in a nursery. So take care when weeding. If you see a large single leaf appearing in amongst a ground cover or under a low bush, wait and see what happens.



Thank you Anna Steffens for the image on the left. This specimen had remained dormant for a number of years, but flowering January 2024.

Image on the right is from a Mapleton garden, one of the best flowerings for years.

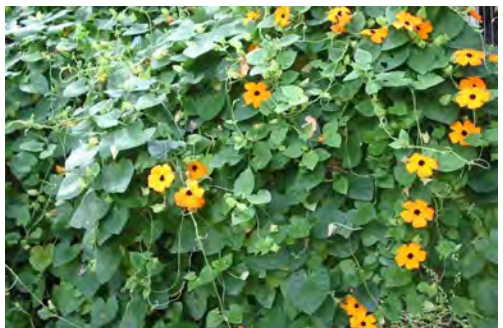
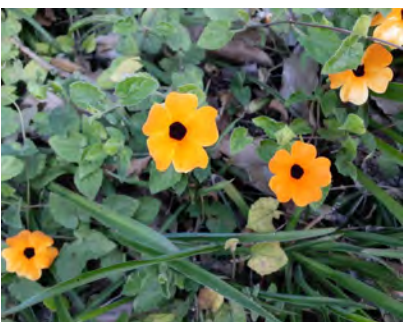
**WEED**

## ***Thunbergia alata***

Black-eyed Susan

It is regarded as an environmental weed in New South Wales and Queensland. A vine with a twining habit, deep green, heart shaped leaves and masses of five petaled, golden orange flowers with a black centre which appear from early summer to autumn.

Fast growing and climbs over other plants and if not removed, it will smother plants. Once established, difficult to remove.



Most of us know this plant. Attractive, but once it escapes, it seriously damages the local environment.

# Community Service

## JP SERVICE

Monday morning from 8:30am to 11:30am without an appointment at the Mapleton Library and Community Centre.

Or

Telephone 5445 7182 for a booking in Mapleton.

## WELCOME PACK FOR NEW RESIDENTS

### Are you a new resident?

Collect your pack from the  
Mapleton Library and Community Centre

Hours: 2pm to 5pm week days (summer)  
9am to 12noon Saturdays

### What does the pack include?

- Brochures promoting community organisations
- Pop up Community News - a free weekly news for everyone with information about the events in your neighbourhood
- List of community organisations in both Mapleton Flaxton and Montville
- Zonta Business Directory
- Recent publications such as the History of the Mapleton Bowls Club

**Also available at the COMMUNITY STALL at the Mapleton Country Market.**

## MAPLETON RURAL FIRE BRIGADE

### Mapleton Rural Fire Brigade

**Monthly Training:** 5:30pm on the 2nd Tuesday of Month

**Monthly Meeting:** 5:30pm on the 3rd Tuesday of Month

**First Officer (all operational matters):** 0499 778806

**Fire Warden (fire permits, safety checks):** 0499 778806

**Secretary (new members, administration):** 0499 883019

**Website:** <https://www.facebook.com/mapletonruralfirebrigade/>

**E-Mail:** [MapletonRFB@gmail.com](mailto:MapletonRFB@gmail.com)

**Address:** 37 Obi Obi Road, Mapleton 4560

**Postal:** PO Box 366, Mapleton 4560

## ST. MARY'S ANGLICAN CHURCH

On the green, Montville

Sunday Eucharist at 8am

Wednesday Meditation with Maureen 9am

For general enquiries contact Carole Phillips at 5445 7839

Baptisms and weddings enquiries welcome.

Contact Rev'd Deb Bird 0457 519899

[MalenyAnglicanParish.com.au](http://MalenyAnglicanParish.com.au) or [angmaleny@westnet.com.au](mailto:angmaleny@westnet.com.au)

### Montville Uniting Church

Services are held each Sunday at 8.15 am, except on the 5th Sunday of a month when a combined service is held at Maleny Uniting Church at 9.45pm. All welcome.

Contact: Anita Monro (Rev. Dr)

Minister on Supply, Blackall Range Uniting Church

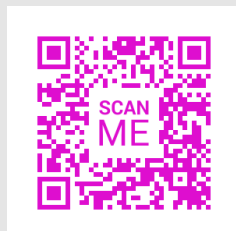
E: [minister@ourcommonlife.org.au](mailto:minister@ourcommonlife.org.au)

M: 0409 273 059

The church is open as a Reflection Gallery every day from at least 10am till 3pm.

# Date Claims

- 28 January** Sunday Come and Try Tennis, Mapleton.
- 2 February** Bingo 9:30-11:30am, Mapleton Library and Community Centre.
- 2 February** Friday Dinner Night, 6pm, Mapleton Bowls Club.
- 3 February** Kureelpa Crop Swap.
- 10 February** Montville Markets.
- 14 February** Lovers of Books evening event, Mapleton Library and Community Centre.
- 14 February** Meet the Division 5 Council Candidates, Montville Hall, 6pm.
- 14 February** Zonta plant sale, Maleny.
- 16 February** Friday Dinner Night, 6pm, Mapleton Bowls Club.
- 21 February** Mapleton Crop Swap.
- 24 February** Mapleton Country Market, 8am –12noon, Mapleton State School car park.
- 25 February** 3pm Harp Wonderland concert St Georges-in-the-Hills, 2 Walker Drive Maleny.
- 4 March** Meet the candidates Mapleton venue to be decided.
- 13 March** Zonta plant sale, Maleny.
- 16 March** Sunshine Coast Council elections.
- 17 March** Sunday afternoon, Lovers of Opera Cinema, Mapleton Library and Community Centre.
- 23-24 March** Montville's Got Talent - A Talent For Murder, Montville Hall.
- 14 April, Sunday** Book Fair and Min Market, 8am to 12noon, Mapleton Library and Community Centre.
- 4–6 May** Maleny Wood Expo.
- 31 May–1 June** Maleny Show.
- 5–7 July** Queensland Garden Expo.
- 5 October** Maleny Garden Club Spring Fair.
- 12 October, Sunday** Book Fair and Mini Market, 8am to 12noon, Mapleton Library and Community Centre.



## BINGO

Your first chance of the year to meet friends, laugh together and enjoy a delicious morning tea.

**2 February 9:30-11:30am**





# 2024 Zonta Hinterland Business Directory



Mapleton  
Flaxton  
Montville  
Palmwoods  
Woombye

Look for copies at your local Post Office and the Library

## ACTIVE WOMEN AND GIRLS FUNDING PROGRAMME IS NOW OPEN

This is just a friendly reminder that the **Active Women and Girls Funding Programme IS NOW OPEN** and will **close on 6<sup>th</sup> March, 2024**. This funding is easy to apply for and has currently had little uptake from organisations within the Sunshine Coast region. Please share with your club's/organisation's Grants Officer and consider applying.

### Funding can be used for the following:

- Female coach employment
- Volunteer and team management training courses
- Equipment procurement
- Volunteer recognition
- Open days
- Targeted programs etc.

### Funding Amounts:

**Category 1** – applicants are eligible for \$7,500 (GST exclusive)  
**Category 2** – applicants are eligible for \$25,000 (GST exclusive)

Please note, this is a grant program whereby applications are assessed when received and the funding unfortunately may run out prior to March. Therefore the earlier you submit your application, the better your chances will be of securing the funding!

For further information and to apply, please visit <https://www.qld.gov.au/recreation/sports/funding/active-women-girls-program#:~:text=The%20Active%20Women%20and%20Girls,apply%20under%20one%20category%20only>

I wish you all the very best with your funding applications.

Kind regards,

**Shelley Heathwood** | A/Sport & Recreation Officer | Div 6-10 (North)

**Montville's Got Talent -  
A Talent for Murder!**

MONTVILLE VILLAGE  
HALL

**Hold the Date!**

**23 & 24  
March  
2024**

[events.mva2021@gmail.com](mailto:events.mva2021@gmail.com)



**Mary Cairncross Scenic Reserve - Maleny**

Enjoy a tranquil walk in lush rainforest, listen to catbirds and see pademelons along the track. Great location for views of the Glasshouse Mountains and to learn more about these unique native species in the Education Centre.

**ART WORKSHOP AVAILABLE AT MAPLETON –**

**ORGANISED BY MAPLETON ART**

**Watercolour—tutor Ann Hayes** <https://annehayes.com.au/>

- Focus: dry brushing as well as tips and hints to make difficult processes easy.
- 11 February Sunday 9am to 12:30pm. Arrive earlier to be ready by 9am to start
- Cost \$45 per person – paid in advance

*One place available*

**Interested?** Email [mapletonlibrary@gmail.com](mailto:mapletonlibrary@gmail.com)

## Friends of the Reflection Gallery

### “Reflecting faith’s experience”

#### An activity of the Montville Uniting Church

Repeats

Greetings to you Friend, especially for this New Year of 2024.

There is a wonderful new display in the Church Gallery. Our Bush Christmas display received many positive comments and we now look forward to a new display by Genevieve Clark which we assembled today.

Genevieve is a retired Principal and Teacher who kept up with technology as part of her work. Having a phone in her hand for work helped her to discover the increasingly sophisticated cameras that the iPhone offered. iPhone photography developed into a much-loved hobby. Retirement gave Genevieve and her husband opportunity to enjoy their retirement in Dundowran Beach, Hervey Bay, as well as the opportunity to travel and to farmsit and housesit in some beautiful locations in Eastern Australia. She enjoys sharing her images of places visited with friends on Facebook and if you’re a keen photographer, you can follow her on Photocrowd. Genevieve’s love of photography combines with her faith as she posts a photo and bible verse on the Facebook page of St James Lutheran Church, Hervey Bay.



Genevieve writes *“pausing and taking time to observe and photograph the natural world exposes the complex and beautiful intricacies that surround us. Think about the vastness of the sea, the moulding of the earth, the brilliance of the sky and the vast array of creatures that inhabit the differing natural environments. Their beauty and detail are astounding. How much do you wonder about how these natural wonders came into existence? As you view my first public photographic display, I invite you to reflect on nature’s form and beauty. Let the photographs take you on a journey. Each photograph is unique – capturing a moment in time. There are never two sunrises or sunsets alike; the formation of the clouds in the sky is ever changing; rainbows appear and disappear; the face of the ocean and the shore changes daily. The formation, layering and subsequent erosion of mountains, valleys, hills and plains is beyond our comprehension. The night sky is filled with wonder. Viewing an aurora dancing in the night sky is breathtaking. Animals and plants have thousands and thousands of unique and amazing characteristics. Nature is full of priceless surprises.*

*The question I ask when surrounded by nature’s beauty is “how could all this be without God?” I see and feel the magnificence of God’s creation and His LOVE for me in nature. There are many words that could accompany my photographs, but I have chosen words from the Bible that reflect on God’s role as creator. I believe He has blessed us with these magnificent landscapes and scenes. As you view my photographs, I encourage you to reflect on what you believe about creation and how you have been blessed.*

Thank you for your support. Please continue to pray for the Gallery and its outreach, and for the people that visit it. Grace and peace to you.

Ruth Potter and Barbara Willcocks

[rpotter@westnet.com.au](mailto:rpotter@westnet.com.au) 07 5478 6484 or 0455 444 453

[barbara.willcocks@gmail.com](mailto:barbara.willcocks@gmail.com) 07 5478 6995 or 0403 541 257

Dear Community,

You are invited to submit an expression of interest to host an event of activity for Harmony Week 2024.

Harmony Week will be celebrated from **Monday 18 March – Sunday 24 March**, and includes the United Nations International Day for the Elimination of Racial Discrimination on 21 March.

Sunshine Coast Council in collaboration with Nambour Community Centre Multicultural Connections Program will be supporting and promoting a week long program of activities across the region, hosted by community groups and organisations.

Harmony Week encourages everyone to experience, explore and appreciate the Sunshine Coast's wealth of cultural diversity.

Activities and events that encourage diversity, inclusion and connection are highly regarded.

Projects that celebrate the stories and history of our multicultural Sunshine Coast are also encouraged.

Your expression of interest also invites you to submit a funding request for up to \$300 to support your activity or event.

### Expression of interest process

Please submit your expression of interest online and be prepared to provide the following:

- Contact details
- Activity name and description
- Upload organisation logo and promotional images in high resolution to use for marketing
- Upload your budget

Search Sunshine Coast Council web site for more details.



**Community brochure and poster display** on the verandah of the

**Mapleton Library and Community Centre.**

If your organisation has brochures or short term posters, consider adding them to this community service.

If you are looking for information, check out this collection.

**Currently over flowing with posters and brochures—there is something for everyone.**

**The new Zonta Business Directory is to hand**

**LOVERS OF BOOKS EVENT**  
**WEDNESDAY 14 FEBRUARY 2024**  
**MAPLETON LIBRARY AND COMMUNITY CENTRE**  
**5.30PM-7.30PM**

We have six authors and illustrators presenting at the Lovers of Books Event. Below is a snippet of information about three of them – all different walks of life, different perspectives on life and with very different offerings to the reading community. Come join us. Register and pay at the Mapleton Library.



**Sarah Pye** is an educator and author and has a doctorate in Creative Arts. She is passionate about the environment and wildlife conservation. In 2012, in the middle of the humid jungle of Borneo, Sarah met the smallest bear species in the world, the sun bear, and the man dedicated to saving them, scientist Wong Siew Te who has given his life to saving sun bears and their rainforest habitat. When she asked how she could help, Wong replied 'Do what you do best.' Those five words led Sarah on a new trajectory and the result is her book *Saving Sun Bears* and a series of children's wildlife books.



**Patty Beecham** has always written, and since retiring has published her first poetry collection: *The Poetry of Patty Beecham, The Light between Breath*. Her second poetry collection called *These Days I Live in Brissy* was launched on 30 August 2023 at Beerwah Library's inaugural Storytellers Festival.

Her poetry has been published in the international magazine *Prism*, winning several awards including 'The Professor Bruce Dawe, AO, Patronal Prize'. She also enjoys writing children's books, travelling, and wine in that order. She was Australia's first Roving Reporter for ABC Breakfast Radio 6124QR, and the first funeral photographer in Australia.



**Lillian Muchiri** was born and grew up in Kenya. She was born into a polygamous family and grew up in a traumatic environment. She went through FGM and other cultural taboos. Later, she joined the National Youth Service, trained in the paramilitary and, later again, migrated to Australia when she was 26 years old.

She pursued her degree and master degree in nursing and currently she is a clinical nurse with QLD Health.

Lillian is a published author of a book called *Looking Back to Move Forward*. She is an inspirational speaker, and mentors young people into making life choices in a manner that is meaningful, nurturing and insightful. She recently bought two acres of land in her village and currently a water tank and bore hole are being built for the village women. Her main aim is to provide shelter for women running away from domestic violence and to assist struggling kids to go through secondary school education as this is what changed her life.

## DEVELOPMENT APPLICATIONS

### Recent Development Applications in Divisions 5 and 10:

This is an initiative of Pop Up Community News aimed at providing information and heightened awareness as to developments in our region. Hopefully the information will provide a spring board should anyone wish to dive deeper into any specific application. Using the link: <https://developmenti.sunshinecoast.qld.gov.au/> or entering "development i sunshine coast" into a browser will take you to the Development i home page. Click on "Application Search" and enter the application number. Select "Details" if you want to dive deeper. The supporting documents can typically be downloaded or viewed by selecting "Application Documents" in the right hand section of the screen.

In the listings below, typically a brief editorial comment is provided after each application description. These are shown in *italics*.

**Lodged: 09/01/2024 DA#: MCU24/0002**

150-176 Dales Rd CHEVALLUM - Caretaker Accommodation - Cuthel & Pitt - Murray & Associates (QLD) Pty Ltd. *Impact Assessable. Application is a result of a Council "Show Cause Notice". Council alleges a Class 10a shed is being used as a class 1a habitable building.*

**Lodged: 11/01/2024 DA#: RAL24/0003**

FAST TRACK - 52 and 58 McCarthy Shute Rd, MALENY - 2 Lots Into 2 Lots Boundary Realignment - RJ and DL Nash - Hinterland Surveys Pty Ltd *782m2 transfer between lots.*

**Lodged: 11/01/2024 DA#: REC08/0095.10**

42 Abbots Rd and 17b Colsak Close PALMWOODS - Infrastructure Agreement - Residential subdivision (1 lot into 13 lots) - Jason Stock - Murray & Associates Qld Pty Ltd *On going from initial application July 2008, approved initially August 2010. Subsequently a series of minor changes extensions etc.*

**Lodged: 12/01/2024 DA#: MCU24/0006**

601 Maleny Kenilworth Rd WITTA - Nature Based Tourism 5 Sites - Nicholas Marches - RPS AAP Consulting Pty Ltd. *Application in response to a Council "Show Cause Notice". Council alleges a Tourist Park/Short Term Accommodation/Nature Based Tourism is being carried out on the site. Also alleges operational works such as excavation and/or filling have occurred on the site.*

**Lodged: 12/01/2024 DA#: POS23/0263**

61-63 Coronation Avenue NAMBOUR - Standard Format Plan SP345482 - Reconfiguring of 2 Lots into 2 Lots - Formia Project Management. *Relates to previously approved application RAL23/0090.*

**Lodged: 15/01/2024 DA#: POS23/0200**

25 Low Street Yandina - BFP for 26 Multiple Dwelling Units - Survey Plan SP343620 (26 Units and Lot 200 for Drainage) - DSQ Land Surveyors. *Relates to a previously approved application MCU18/0067 at 27 Farrell St Yandina for 15 multiple dwelling units, that grew to 26 dwelling units.*

**Lodged: 16/01/2024 DA#: OPW24/0012**

24, 26 and 28 Ash St and 64 Coral St MALENY - Road work Stormwater Earthworks and Engineering works - SMA Property No 2 - URBN Town Planning Pty Ltd. *Operational works relating to a pre-existing approval.*

---

---

# LIST OF COMMUNITY ORGANISATIONS

## A COMBINED LISTING FOR FLAXTON, KUREELPA, MAPLETON AND MONTVILLE

**Blackall Range Care Group Ltd** [www.rangecare.com.au](http://www.rangecare.com.au)

**Blackall Range Lions Club** E: [blackallrangelionsclub@outlook.com](mailto:blackallrangelionsclub@outlook.com); [facebook.com/blackallrangelionsclub/](https://www.facebook.com/blackallrangelionsclub/) ; <http://www.brhc.org.au>

**Blackall Range Visual Artists** [www.blackallrangevisualartists.com.au](http://www.blackallrangevisualartists.com.au)

**Blackall Range Woodcrafter's Guild Inc.** Meets Montville Sports Ground 230 Balmoral Rd Montville. Open 8.00am to 11.30am Mondays to Saturdays.

**Blackall Range Zonta Club** Email: [info@zontablackallrange.org.au](mailto:info@zontablackallrange.org.au)  
[www.zontablackallrange.org.au](http://www.zontablackallrange.org.au)

**Bush and Beach walking group.** Meets Mapleton Public House car park on Tuesdays at 7am (winter start time) and car pools.

**Hinterland Quarry Action Group**

Anne Veivers 0416 155 116; [aveivers@iprimus.com.au](mailto:aveivers@iprimus.com.au)

**History Group** [montvillehistorygroup@gmail.com](mailto:montvillehistorygroup@gmail.com)

**Kureelpa & Dulong Community Hall** [kureelpahall@gmail.com](mailto:kureelpahall@gmail.com)

**Mah-jong** Telephone 5478 6303 Mapleton Bowls Club.

**Mapleton and District Community Association**

(MADCA) [madca.inc@gmail.com](mailto:madca.inc@gmail.com) <https://www.facebook.com/madca4560>

**Mapleton Art** Thursdays weekly at Mapleton Library and Community Centre. Contact: [mapletonlibrary@gmail.com](mailto:mapletonlibrary@gmail.com)

**Mapleton Bowls Club** Telephone 5445 7479  
[www.mapletonbowlsclub.com.au](http://www.mapletonbowlsclub.com.au)

**Mapleton Bridge Club** [Mapleton.bridgeaustralia.org](http://Mapleton.bridgeaustralia.org)  
[mapletoncontractbridgeclub@gmail.com](mailto:mapletoncontractbridgeclub@gmail.com)

**Mapleton Choir** Kureelpa Hall 7pm, Mondays Contact: [themapletonchoir@outlook.com](mailto:themapletonchoir@outlook.com)

**Mapleton Country Market** every 4th Saturday at the Mapleton State School car park. Contact Paula 0419 726603 email: [countrymarket.mapleton@gmail.com](mailto:countrymarket.mapleton@gmail.com) or find us on Facebook.

**Mapleton Library and Community Centre**

[mapletonlibrary@gmail.com](mailto:mapletonlibrary@gmail.com) [www.mapletoncommunitylibrary.com](http://www.mapletoncommunitylibrary.com)  
Telephone 5445 7011

**Mapleton Craft Group** Wednesdays 9-12noon, Mapleton Bowls Club

**Mapleton Hall and Sportsgrounds** [mapletonhall@gmail.com](mailto:mapletonhall@gmail.com)

**Mapleton Men's Shed** [www.mapletonmenshed.org.au](http://www.mapletonmenshed.org.au)

**Mapleton Movers** Heart Foundation Walking Group meet in the afternoons every Monday, Wednesday and Friday at the Lilypond's carpark for enquiries call 0408 756353

**Mapleton Quilters** Mondays 9-12 noon, Mapleton Bowls Club

**Mapleton RSL Sub Branch** Matt Dykes  
0427263595; [mdykes7@gmail.com](mailto:mdykes7@gmail.com)

**Mapleton Rural Fire Brigade Telephone** 0499 778806; 0499 883019

**Mapleton Tennis Club** [mapletontennis@gmail.com](mailto:mapletontennis@gmail.com)  
[www.tennis.com.au/mapleton-tennis-club](http://www.tennis.com.au/mapleton-tennis-club)

**Montville Anglican Church** [huesong2@gmail.com](mailto:huesong2@gmail.com)

**Montville Chamber of Commerce**

montvillechamber@gmail.com

**Montville Masonic Lodge** montville260@outlook.com

**Montville Rural Fire Bridage** montville.rfb@bigpond.com

**Montville School P&C** msspandcpresident@gmail.com

**Montville Uniting Church** minister@ourcommonlife.org.au

**Montville Village Association** secretary.mva@gmail.com  
www.montvillevillageassociation.org.au

**MVA MARKET** montvillemarket.mva@gmail.com

**RangeCare OP SHOP** 17 Obi Obi Road

**Probus Club of North Blackall Range** Secretary 0493 632703  
nbrprobus@gmail.com

**Range Community Gym and Fitness Centre**  
mapletongym@gmail.com www.rangecommunitygym.com.au

**RANGE United Soccer Club** info.rangeunited@gmail.com

**Sunshine Coast U3A** u3aoffice@u3asunshine.org.au

**Tennis Club** montvilletennisclub1925@gmail.com

**The Flaxton Craft Group** lkathypatterson@gmail.com

**The Range Community Kindergarten**  
www.rangekindy.qld.edu.au

**Wildlife Volunteers Association Inc (WILVOS)**

Hotline 5441 6200 www.wilvos.org.au

**Mapleton Community Facebook page**

www.facebook.com/groups/mapletonqueensland/

**Montville Community Facebook page**

www.facebook.com/groups/780987252874906/

**Flaxton Community Facebook page**

www.facebook.com/groups/388815358233538

**Happenings – Montville and surrounds email newsletter**

Subscribe: www.montvillevillageassociation.org.au/subscribe-to-happenings/ Editor.mvahappenings@gmail.com

**SCHOOLS**

**Blackall Range Independent School**

office1@brschool.com.au

**Mapleton State School** principal@mapletonss.eq.edu.au

**Montville State School** admin@montvilless.eq.edu.au

**If your organisation is not listed,  
please let me know. Many thanks, nita**

**mapletonqueensland@gmail.com**





## RECYCLING IN MAPLETON

**SPECTACLES** are collected by Lions at the Mapleton Library and Community Centre and the Mapleton Bowls Club.

### CANS and BOTTLES - Containers for Change

**Mapleton Bowls Club** - There is a convenient collection point which is a wheelie bin placed near the entrance. Bins can be distinguished from others by its bright blue lid.

**Mapleton State School P & C.** All your donations would be gratefully received and will go towards resources for our school and students.

**Mapleton Men's Shed** These may be left in the bins in front of the storage shed in Mapleton Forest Drive.

**RangeCare** All fund raised will improve services for their clients. 360-362 Flaxton Drive Flaxton; 36 Doolan Street, Nambour; 17B Bean Street, Maleny.

**Please do not crush the cans you deposit for recycling.**

### MOBILE TELEPHONES

Roger Loughnan Real Estate, corner Post Office Road and Obi Obi Road Mapleton, is a registered drop off location for people to donate their old working phones with chargers etc. The staff will deliver these to DVSafe Phone. **Also place in any Lion's spectacle box.**

**Plastic lids from drink bottles only—** collection container on the Mapleton Library Centre verandah



**Blister packs—**plastic container on the Mapleton Library Centre verandah



**Used pens—**plastic container on the Mapleton Library Centre verandah

**Tooth brushes—**plastic container on the Mapleton Library Community Centre verandah

**YARN LIBRARY- Sewing, knitting and embroidery items to swap—** container inside the Library Centre



**PLANT LIBRARY –** there is a stand outside where you can leave you plants some one else might like.

**THANK YOU** to all who have already recycled many of the above items.



## **Procedures for Pop Up Community News management**

The Pop Up Community News was launched in 2016. The News has gone through many changes with no one organisation controlling the News—it is truly a community news: for the community by the community. Auspiced by the Mapleton Library and Community Centre since 2016 which provides insurance, financial support and much more.

The News offers opportunity to promote events and provide information to all community groups right across the Range and the surrounding hinterland

**Thank you everyone.**

**The Pop Up Community News is edited, published and distributed by volunteers.**

**There will be no discussion or correspondence on matters pertaining to the Pop Up Community News.**

- All articles for the Pop Up Community News are to be sent to [mapletonqueensland@gmail.com](mailto:mapletonqueensland@gmail.com)
- If it is important to have an article included in a specific edition, forward article as early as possible. Generally the cut off time for publication is 12noon Tuesday each week but as this is a fully volunteer publication inclusion is not guaranteed.
- Articles can be emailed at any time. Please include contact name and contact details.
- All articles are to be sent digitally unless otherwise pre-arranged.
- Pop up Community News is published weekly but open to review at any time. A short holiday over Festive Season each year to give the volunteers a well earned holiday.
- Currently Thursday night for distribution is the target time.
- No lost animals, political, religious, personal opinions or missing person notification will be published.
- Negative or derogatory comments will not be published.

Email [mapletonqueensland@gmail.com](mailto:mapletonqueensland@gmail.com) requesting guidelines.

Anyone wishing to receive the Pop Up Community News, send your email address to [mapletonqueensland@gmail.com](mailto:mapletonqueensland@gmail.com)

Anyone wishing to cease receiving the Pop Up Community News, send your email to [mapletonqueensland@gmail.com](mailto:mapletonqueensland@gmail.com)

**Keep informed through the web and social media**

[www.facebook.com/groups/mapletonqueensland/](http://www.facebook.com/groups/mapletonqueensland/)

[www.mapletoncommunitylibrary.com](http://www.mapletoncommunitylibrary.com)

**Remember if you wish to receive the**

**POP UP COMMUNITY NEWS**

**Email [mapletonqueensland@gmail.com](mailto:mapletonqueensland@gmail.com)**

**Current circulation over 4,254**

